

**CITY OF BROKEN BOW**  
**CITY COUNCIL AGENDA**  
**February 13<sup>th</sup>, 2018 @ 12:00 NOON**  
**City Hall Council Chambers**  
**314 South 10<sup>th</sup> Avenue, Broken Bow, NE**

**Call to Order**

**A. Roll Call**

**B. Pledge of Allegiance**

**C. Open Meeting Law:** A current copy of the Open Meetings Act is posted on the North wall in the rear of the Council Chambers and is available for review by all citizens in attendance.

**D. Submittal of Requests for Future Items:** Individuals who have appropriate items for City Council consideration should complete the Request for Future Agenda Items form located on the table by the door. If the issue can be handled administratively without Council action, notification will be provided. If the item is scheduled for a meeting or study session, notification of the date will be given.

**E. Consent Agenda:** The Mayor & Council will review and may or may not approve the consent agenda items for February 13<sup>th</sup>, 2018, which will include the following:

- a. Approval of Minutes of January 23<sup>rd</sup>, 2018 Council Meeting [Hyperlink](#)
- b. Approval of Minutes of February 2<sup>nd</sup>, 2018 Special Meeting [Hyperlink](#)
- c. Approval of Bills as Posted [Hyperlink](#)

**F. Other Communications:**

- a. **SafeWise Presentation** – Presentation to the Police Department for being ranked as 5<sup>th</sup> safest city in Nebraska. [Hyperlink](#)

**b. Project Status Report from JEO**

**G. Old Business:**

- a. **Public Hearing – Ordinance 1178, Mayor & Council Wages** – May or may not vote to open a public hearing regarding Ordinance 1178, Mayor and Council Wages. [Hyperlink](#)
- b. **Final Reading Ordinance 1178, Mayor & Council Wages** [Hyperlink](#)
- c. **Ordinance 1178, Mayor & Council Wages** – May or may not vote to approve Ordinance 1178, Mayor and Council Wages. [Hyperlink](#)

**H. New Business:**

- a. **Councilmember Chris Myers Absence** – May or may not vote to excuse Councilman Chris Myers' absence from the February 13<sup>th</sup>, 2018 meeting.

**CITY OF BROKEN BOW**  
**CITY COUNCIL AGENDA**  
**February 13<sup>th</sup>, 2018 @ 12:00 NOON**  
**City Hall Council Chambers**  
**314 South 10<sup>th</sup> Avenue, Broken Bow, NE**

- b. Board Appointment & Reappointment** – May or may not vote approve the appointment of Ryan Vonderohe to the Park Board for a term ending February 2019 and Tyson Havranek to the Planning Commission for a term ending February 2020, and the reappointment of Jeff Oeltjen to the Park Board for a three year term ending February 2021, Cecil Burt III, Travis Hansen, and Jim Girardin, Jr. to the Planning Commission for a three year term ending 2021, and Jason Baum to the Board of Adjustment for a five year term ending 2023. [Hyperlink](#)
- c. Bid Opening for Police Vehicle** – Bids will be opened for a new police vehicle and the Council may or may not vote to table and review the bids for a new police vehicle.
- d. S & L Sanitation Agreements** – May or may not vote to renew the trash agreement with S & L Sanitation for 5 years. [Hyperlink](#)
- e. Transfer Station Agreements** – May or may not vote to renew the trash agreements with the Transfer Station for 5 years. [Hyperlink](#)
- f. Public Hearing – Resolution 2018-9 – Lot Split** – May or may not vote to open a public hearing regarding the lot split at 133 South 9<sup>th</sup> Avenue and 130 South 10<sup>th</sup> Avenue. [Hyperlink](#)
- g. Resolution 2018-9 – Girardin Lot Split** – May or may not vote to approve the lot split at 133 South 9<sup>th</sup> Avenue and 130 South 10<sup>th</sup> Avenue. [Hyperlink](#)
- h. Public Hearing – One & Six Year Plan** – May or may not vote to open a public hearing on the One and Six Year Plan. [Hyperlink](#)
- i. Resolution 2018-10 – One & Six Year Plan** – May or may not vote to approve the One & Six Year Plan. [Hyperlink](#)
- j. Resolution 2018-11 – Handibus Grant Funding** – May or may not vote to approve the Handibus Operating Assistance. [Hyperlink](#)
- k. Resolution 2018-12 – Broken Bow 2018 Paving Improvements** – May or may not vote to approve payment #1 to JEO Consulting Group Inc. in the amount of \$2,484.00 for work completed on the Broken Bow 2018 Paving Improvements through January 5, 2018. [Hyperlink](#)
- l. Resolution 2018-13 – Flood Risk Reduction** – May or may not vote to approve payment #3 to JEO Consulting Group Inc. in the amount of \$3,098.00 for work completed on the Broken Bow Flood Risk Reduction through January 19, 2018. [Hyperlink](#)

**CITY OF BROKEN BOW**  
**CITY COUNCIL AGENDA**  
**February 13<sup>th</sup>, 2018 @ 12:00 NOON**  
**City Hall Council Chambers**  
**314 South 10<sup>th</sup> Avenue, Broken Bow, NE**

- m. Resolution 2018-14 – Cornhusker State Industries** – May or may not vote to approve payment to Cornhusker State Industries in the amount of \$8,422.00 for furniture for the Library. [Hyperlink](#)
- n. Resolution 2018-15 – Chief Construction** - May or may not vote to approve payment #10 to Chief Construction Company in the amount of \$51,962.55 for work completed on the Broken Bow Library through January 31, 2018. [Hyperlink](#)
- o. Resolution 2018-16 – Westbrook Audio** – May or may not vote to approve payment to Westbrook Audio in the amount of \$3,757.18 for audio equipment and installation at the Library. [Hyperlink](#)
- p. Resolution 2018-17 – Library Design** – May or may not vote to approve payment #18 to JEO Consulting Group Inc. in the amount of \$1,578.00 for work completed on the Broken Bow Library Design Services/Building Renovation and Addition through January 26, 2018. [Hyperlink](#)
- q. Resolution 2018-18 – Bow Family Furniture** – May or may not vote to approve payment to Bow Family Furniture in the amount of \$24,259.20 for furniture at the Library. [Hyperlink](#)

- I. Comments by Mayor and Council Members Concerning City Departments.**
- J. Closed Session** – May or may not vote to enter into closed session to discuss litigation.
- K. Closed Session** – May or may not vote to enter into closed session to discuss potential litigation.
- L. Adjournment**

***The next City Council Meeting will be on Friday, February 23<sup>rd</sup>, 2018 @ 12:00 pm.***

The Council will review the above matters and take such action as they deem appropriate. The Council may enter into closed session to discuss any matter on this agenda when it is determined by the council that it is clearly necessary for protection of the public interest or the prevention of needless injury to the reputation of any individual and if such individual has not requested a public meeting, or as otherwise allowed by law. Any closed session shall be limited to the subject matter for which the closed session was classed. If the motion to close passes, immediately prior to the closed session the Mayor shall restate on the record the limitation of the subject matter of the closed session.

**Broken Bow City Council  
Meeting Minutes  
January 23, 2018**

The Broken Bow City Council met in regular session on Tuesday, January 23, 2018. Notice of the meeting was given in advance thereof as required by law by publishing in the Custer County Chief on January 18, 2018. Availability of the agenda and related materials was communicated in the advanced notice to the Mayor and all members of the Council, as well as, shared with various media outlets. All proceedings hereafter shown were taken while the meeting was open to the attendance of the public.

Mayor Burt called the meeting to order at 12:01 P.M., with the following Councilmembers present: Sonnichsen, Neth, Myers, and Holcomb. Absent: None. Following the pledge of allegiance, Mayor Burt announced the availability of the open meetings law.

Mayor Burt read the format for submitting requests for future agenda items.

Moved by Sonnichsen, seconded by Neth, to approve the consent agenda for January 23, 2018. Said motion includes approval of Minutes of the January 9<sup>th</sup>, 2017 Council Meeting, Bills to Date, and December Treasurer's Report. Roll call vote: Voting aye: Neth, Holcomb, Sonnichsen, and Myers. Nays: None. Motion carried.

Aflac, insurance, 892.45, 183.40; Ansley Lumber and Supply, boards, 625.00; Bon Tool Co., booms & floats, 88.85; Brent Clark, mileage, 194.02; Brodart Co., ID card holder, 248.00; Broken Bow Mun Utilities, fuel, 2,761.60; Cardmember Services, misc, 260.00; Carquest of Broken Bow, parts, 187.51; Central Nebraska Electric, Inc., microphone, 1,317.00; Century Link, phone, 696.11; City Flex Benefit plan, flex, 130.21; City of Broken Bow – Health Insurance, insurance, 3,610.68; City of Broken Bow Pension Fund, pension, 1,969.77, 6,490.40; Consolidated Management Co., meals, 71.64; Creative Signs, numbers, 35.00; Custer County Chief, publication, 1,164.58; Custer County Hiway Dept., culvert, 426.15; Deere Credit Inc., mower lease, 14,309.22; Display Sales, flags, 527.60; EFTPS Online Payment, payroll, 1,976.48, 7,053.55, 8,451.02; Eakes Office Products, fax, 200.00; Family Heritage, 56.00; Garrett Tires & Treads, flat tire, 22.55; Gateway Motors Inc, parts, 372.83; Hometown Leasing, copier lease, 200.17; Ingram Library Services, materials, 379.02; Insurance Aid Services, 985.32; Island Supply Company, oxygen, 83.78; Kearny Hug, subscription, 182.00; League of Municipalities, registration, 1,500.00; Matheson Tri-Gas Inc, oxygen, 107.11; Mead Lumber, supplies, 583.63; Monte Clark, meals, 23.61; Mt. Custer Truck Sales, pins, 161.70; Myers Construction Co, snow removal, 1,520.00; Nebraska Child Support Payment Center, child support, 169.65; Nebraska Dept. of Revenue, lodging tax, 775.91, Keno, 1,312.00; Nebraska State Historical Soc., membership, 32.00; OSA/Computers Plus, supplies, 934.32; Obrien's True Value, supplies, 167.72; Omaha State Bank, HSA, 462.50; Overnite Auto, repairs, 605.88; Plains Equipment Group, parts, 292.62; Platte Valley Communications, repairs, 153.00; Prachts Ace Hardware, supplies, 539.82; Pristine Cleaning, LLC, cleaning, 325.00; Psychology Today, subscription, 29.97; Ranchland Ford, parts, 77.47; Schmicks Market, supplies, 578.45; Shane Fiorelli, incentive, 1,115.00; Shopko Store, batteries, 6.99; State Income Tax WH NE Online Payment, payroll, 2,476.17; Trotter Service, gas, 512.75; Trotter's Whoa & Go, fuel, 106.07; US Bank Equipment Finance, copier lease, 303.97; Verizon Wireless, 162.56; Wenquist Inc., battery, 244.39; Bi-Weekly Payroll, payroll, 46,732.53; Total Bills = 118,164.70.

Moved by Neth, seconded by Holcomb, to open a public hearing at 12:05 p.m. regarding Ordinance 1178, Mayor and Council Wages. Roll call vote: Voting aye: Neth, Sonnichsen, Myers, and Holcomb. Nays: None. Motion carried. This ordinance is in response to the meeting from June where the Council wanted to raise the Mayor's wage. The Council's wage will remain the same. The ordinance would become effective December 1, 2018. Moved by Neth, seconded by Holcomb, to close the public hearing at 12:06 p.m. regarding Ordinance 1178, Mayor and Council Wages. Roll call vote: Voting aye: Holcomb, Myers, Sonnichsen, and Neth. Nays: None. Motion carried.

City Clerk Stephanie Wright read Ordinance 1178. Moved by Sonnichsen, seconded by Neth, to accept the second reading of Ordinance 1178 and not waive the readings. Roll call vote: Voting aye: Neth, Holcomb, Sonnichsen, and Myers. Nays: None. Motion carried.

Moved by Holcomb, seconded by Sonnichsen, to approve City Administrator Brent Clark's attendance at the Nebraska Planning & Zoning Association Conference on March 7<sup>th</sup> – 9<sup>th</sup>, 2018. Roll call vote: Voting aye: Holcomb, Sonnichsen, Myers, and Neth. Nays: None. Motion carried.

Moved by Sonnichsen, seconded by Holcomb, to approve City Administrator Brent Clark's attendance at the Midwinter League of Nebraska Municipalities Conference in Lincoln on February 26<sup>th</sup> and 27<sup>th</sup>, 2018. Roll call vote: Voting aye: Neth, Holcomb, Sonnichsen, and Myers. Nays: None. Motion carried.

Moved by Sonnichsen, seconded by Holcomb, to move the second Council meeting in February from Tuesday, February 27<sup>th</sup>, 2018 to Friday, February 23<sup>rd</sup>, 2018. Roll vote: Voting aye: Sonnichsen, Myers, Neth, and Holcomb. Nays: None. Motion carried.

Moved by Neth, seconded by Sonnichsen, to approve Resolution 2018-6. Said resolution approves payment #17 to JEO Consulting Group Inc. in the amount of \$4,433.91 for work completed on the Broken Bow Library Design Services/Building Renovation Addition through December 29, 2017. Roll call vote: Voting aye: Myers, Holcomb, Sonnichsen, and Neth. Nays: None. Motion carried.

Moved by Holcomb, seconded by Sonnichsen, to approve Resolution 2018-7. Said resolution approves the payment to Computers Plus in the amount of \$3,886.22 for work furniture at the Library. Roll call vote: Voting aye: Neth, Sonnichsen, Holcomb, and Myers. Nays: None. Motion carried.

Mayor Burt opened the floor for comments from the Mayor and Councilmembers concerning City Departments. Councilman Sonnichsen commended the City crews on the snow removal. City Administrator Brent Clark announced that the auction for surplus items from the library will be on February 17<sup>th</sup>. Library Director Joan Birnie thanked everyone that helped with the library move.

Moved by Sonnichsen, seconded by Neth, to adjourn the City Council Meeting at 12:17 p.m. Roll call vote: Voting aye: Sonnichsen, Myers, Holcomb, and Neth. Nays: None. Motion carried.

---

Cecil Burt, Mayor

ATTEST:

---

Stephanie M. Wright, City Clerk

**Broken Bow City Council  
Meeting Minutes  
February 2<sup>nd</sup>, 2018**

The Broken Bow City Council met in special session on Friday, February 2, 2018. Notice of the meeting was given in advance thereof as required by law by posting in three public places. Availability of the agenda and related materials was communicated in the advanced notice to the Mayor and all members of the Council, as well as, shared with various media outlets. All proceedings hereafter shown were taken while the meeting was open to the attendance of the public.

Council President Rod Sonnichsen called the meeting to order at 2:00 P.M., with the following Councilmembers present: Sonnichsen, Neth, and Myers. Absent: Holcomb. Mayor Burt was absent for medical purposes.

Moved by Neth, seconded by Sonnichsen, to approve Resolution 2018-8. Said resolution deems items from several departments as surplus property and will be sold at auction on February 17, 2018. Roll call vote: Voting aye: Neth, Sonnichsen, and Myers. Nays: None. Motion carried.

Moved by Sonnichsen, seconded by Neth, to enter into closed session at 2:03 p.m. for the purpose of discussing strategy with respect to collective bargaining. The City representatives that shall remain present during the closed session including the City Council are City Attorney Jason White, City Administrator Brent Clark, and City Clerk Stephanie Wright. Roll call vote: Voting aye: Neth, Sonnichsen, and Myers. Nays: None. Motion carried.

Moved by Sonnichsen, seconded by Neth, to exit out of closed session at 2:07 p.m. from the purpose of discussing strategy with respect to collective bargaining. Roll call vote: Voting aye: Sonnichsen, Myers, and Neth. Nays: None. Motion carried.

Moved by Sonnichsen, seconded by Myers, to adjourn the City Council Meeting at 2:08 p.m. Roll call vote: Voting aye: Sonnichsen, Myers, and Neth. Nays: None. Motion carried.

---

Cecil Burt, Mayor

ATTEST:

---

Stephanie M. Wright, City Clerk

## Accounts Payable Detail Listing

City of Broken Bow

<u>Vend#</u>	<u>Vendor Name</u>								
<u>Pay#</u>	<u>Post Date</u>	<u>Due Date</u>	<u>Amount</u>	<u>Invoice</u>	<u>Date</u>	<u>PO#</u>	<u>Date</u>	<u>Status</u>	
	<u>Account#</u>	<u>Work Order</u>		<u>Description</u>			<u>Debit</u>	<u>Credit</u>	
<b>Aflac</b>									
25542	1/24/2018	1/24/2018	892.45					Ck# 473 Printed	
	01-1501.00			PRE TAX AFLAC			892.45	0.00	
25543	1/24/2018	1/24/2018	183.40					Ck# 473 Printed	
	01-1501.00			AFLAC POST TAX			183.40	0.00	
25556	1/24/2018	1/24/2018	285.80					Ck# 473 Printed	
	01-1501.00			BBHA Aflac			287.91	0.00	
	01-1501.00			rounding			0.00	0.09	
	01-1501.00			Aflac mistake			0.00	2.02	
							287.91	2.11	
25568	2/7/2018	2/7/2018	891.94					Posted	
	01-1501.00			PRE TAX AFLAC			891.94	0.00	
25569	2/7/2018	2/7/2018	182.88					Posted	
	01-1501.00			AFLAC POST TAX			182.88	0.00	
<b>American Public Works Association</b>									
25637	2/13/2018	2/13/2018	196.00					Posted	
	08-3206.00			APWA membership renewal			196.00	0.00	
<b>Automated Printing, Inc.</b>									
25610	2/13/2018	2/13/2018	480.12					Posted	
	01-3223.00			W-2, 1099 and 1094/1095 B Forms			480.12	0.00	
<b>BNSF Railway Company</b>									
25614	2/13/2018	2/13/2018	335.99					Posted	
	01-3222.00			land lease			335.99	0.00	
<b>Barco</b>									
25640	2/13/2018	2/13/2018	1,490.90					Posted	
	08-3310.00			motor grader tire chains			1,490.90	0.00	
<b>Baxter Welding</b>									
25641	2/13/2018	2/13/2018	1,059.45					Posted	
	08-3310.00			motor grader snow gate			1,059.45	0.00	
<b>Big State Industrial Supply Inc</b>									
25639	2/13/2018	2/13/2018	239.40					Posted	
	08-3350.00			LED headlamps			239.40	0.00	
<b>Black Hills Energy</b>									
25583	2/6/2018	2/6/2018	3,419.18					Ck# 488 Printed	
	06-3220.00			Utilities-Gas			855.81	0.00	
	04-3220.00			Utilities-Gas			393.39	0.00	
	07-3220.00			Utilities-Gas			885.77	0.00	
	02-3220.00			Utilities-Gas			1,284.21	0.00	
							3,419.18	0.00	
<b>Blue360 Media</b>									
25648	2/13/2018	2/13/2018	67.25					Posted	
	04-3209.00			Nebraska crime and traffic law books			67.25	0.00	
<b>Bound Tree Medical</b>									
25587	2/13/2018	2/13/2018	344.43					Posted	
	05-3338.00			EMS Supplies			344.43	0.00	
<b>Brent Clark</b>									
25624	2/13/2018	2/13/2018	79.56					Posted	
	01-3205.00			mileage			79.56	0.00	
<b>Broken Bow Airport Authority</b>									
25607	2/13/2018	2/13/2018	1,083.33					Posted	
	01-3409.00			Monthly Payment			1,083.33	0.00	
<b>Broken Bow Ambulance Service</b>									
25588	2/13/2018	2/13/2018	1,163.22					Posted	
	05-3313.00			winter conference			1,163.22	0.00	
<b>Broken Bow Chamber of Commerce</b>									
25615	2/13/2018	2/13/2018	350.00					Posted	
	01-3212.00			membership			350.00	0.00	
25646	2/13/2018	2/13/2018	1,085.00					Posted	
	05-3334.00			ambulance incentive			1,085.00	0.00	

## Accounts Payable Detail Listing

City of Broken Bow

**Vend# Vendor Name**

<u>Pay#</u>	<u>Post Date</u>	<u>Due Date</u>	<u>Amount</u>	<u>Invoice</u>	<u>Date</u>	<u>PO#</u>	<u>Date</u>	<u>Status</u>
	<u>Account#</u>	<u>Work Order</u>		<u>Description</u>			<u>Debit</u>	<u>Credit</u>
<b>Broken Bow Mun Utilities (continued)</b>								
25608	2/13/2018	2/13/2018	1,776.62					Posted
	08-3225.00			fuel			447.80	0.00
	04-3225.00			fuel			678.59	0.00
	09-3225.00			fuel			280.24	0.00
	03-3225.00			fuel 173.8 gallons			369.99	0.00
							1,776.62	0.00
<b>Broken Bow Municipal Utilities</b>								
25564	1/29/2018	1/29/2018	81.47					Ck# 479 Printed
	06-3220.00			1/2 new fire station utilities			81.47	0.00
25613	2/13/2018	2/13/2018	7,353.95					Posted
	01-3213.00			General - Radio/Weather Station Tower			25.48	0.00
	08-3220.00			Street - Shop Utilities/Trash Removal			2,857.39	0.00
	06-3220.00			Fire - Utilities/Trash Removal			545.50	0.00
	04-3220.00			Police - Utilities/Trash Removal			67.56	0.00
	04-3315.00			Police - Dog Pound Utilities			180.43	0.00
	09-3220.00			Park - Utilities/Trash Removal			1,057.84	0.00
	09-3220.00			Park - Shop Utilities/Trash Removal			1,224.60	0.00
	07-3220.00			Library - Utilities/Trash Removal			361.68	0.00
	02-3220.00			Pub Bldg - Utilities/Trash Removal			782.49	0.00
	11-3360.00			Tree Dump - Utilities			61.69	0.00
	10-3220.00			Swim Pool - Utilities/Trash Removal			189.29	0.00
							7,353.95	0.00
<b>Broken Bow Postmaster</b>								
25581	2/5/2018	2/5/2018	13.50					Ck# 484 Printed
	01-3223.00			return lights			13.50	0.00
<b>Broken Bow Rural Fire Board</b>								
25563	1/29/2018	1/29/2018	46.86					Ck# 480 Printed
	06-3220.00			1/2 new fire station utilities			46.86	0.00
<b>Capitol One Bank</b>								
25593	2/13/2018	2/13/2018	76.25					Posted
	04-3221.00			web site fees			19.90	0.00
	04-3310.00			taillights and car wash			56.35	0.00
							76.25	0.00
<b>Card Services</b>								
25627	2/13/2018	2/13/2018	278.15					Posted
	09-3339.00			t-posts			131.60	0.00
	09-3339.00			bolts			6.40	0.00
	08-3310.00			supplies and parts			140.15	0.00
							278.15	0.00
<b>Carquest of Broken Bow</b>								
25602	2/13/2018	2/13/2018	139.22					Posted
	08-3310.00			parts and supplies			91.28	0.00
	09-3310.00			parts and supplies			47.94	0.00
							139.22	0.00
<b>Century Link</b>								
25585	2/13/2018	2/13/2018	525.21					Posted
	08-3221.00			Street - Basic & Long Distance			32.99	0.00
	04-3221.00			Police - Basic & Long Distance			193.81	0.00
	10-3221.00			Swim Pool - Basic & Credit Card			59.44	0.00
	09-3221.00			Park - Basic & Long Distance			32.98	0.00
	03-3221.00			Handi Bus - Basic & Long Distance			61.58	0.00
	01-3221.00			General -Basic & Long Distance Office			144.41	0.00
							525.21	0.00
<b>Chief Supply Corporation</b>								
25595	2/13/2018	2/13/2018	153.46					Posted
	04-3312.00			stocking hats and shirts			153.46	0.00
<b>City Flex Benefit Plan</b>								
25544	1/24/2018	1/24/2018	130.21					Ck# 422 Printed
	01-1501.00			SELECT FLEX-UNREIMBURSED M/D/V			130.21	0.00
25557	1/24/2018	1/24/2018	100.00					Ck# 422 Printed
	01-1501.00			BBHA Flex			100.00	0.00



City of Broken Bow

<u>Vend#</u>	<u>Vendor Name</u>	<u>Pay#</u>	<u>Post Date</u>	<u>Due Date</u>	<u>Amount</u>	<u>Invoice</u>	<u>Date</u>	<u>PO#</u>	<u>Date</u>	<u>Status</u>
	<u>Account#</u>			<u>Work Order</u>		<u>Description</u>			<u>Debit</u>	<u>Credit</u>
	City Flex Benefit Plan (continued)									
25570	2/7/2018	2/7/2018			130.21					Posted
	01-1501.00					SELECT FLEX-UNREIMBURSED M/D/V			130.21	0.00
	City of Broken Bow									
25562	1/26/2018	1/26/2018			3,495.00					Ck# 478 Printed
	01-1303.10					CD Cell Closure Funds			3,495.00	0.00
	City of Broken Bow - Health Insurance									
25554	1/24/2018	1/24/2018			3,610.68					Ck# 477 Printed
	01-1501.00					HEALTH INSURANCE			3,610.68	0.00
25561	1/25/2018	1/25/2018			28,074.68					Ck# 477 Printed
	01-1501.00					BBHA Health Insurance			5,228.06	0.00
	01-3104.00					Health Insurance			3,090.78	0.00
	08-3104.00					Health Insurance			5,356.15	0.00
	06-3104.00					Health Insurance			721.17	0.00
	04-3104.00					Health Insurance			7,416.56	0.00
	05-3104.00					Health Insurance			721.17	0.00
	09-3104.00					Health Insurance			2,297.67	0.00
	07-3104.00					Health Insurance			1,626.98	0.00
	03-3104.00					Health Insurance			1,616.14	0.00
									28,074.68	0.00
25580	2/7/2018	2/7/2018			3,610.68					Posted
	01-1501.00					HEALTH INSURANCE			3,610.68	0.00
	City of Broken Bow Pension Fund									
25545	1/24/2018	1/24/2018			1,969.77					Ck# 482 Printed
	01-1513.00					RETIREMENT LOAN PAYMENT			1,969.77	0.00
25546	1/24/2018	1/24/2018			6,752.64					Ck# 482 Printed
	01-1502.00					RETIREMENT NEW			6,752.64	0.00
25566	1/31/2018	1/31/2018			925.94					Ck# 482 Printed
	01-1502.00					Liability - BBHA			925.94	0.00
25571	2/7/2018	2/7/2018			2,215.81					Posted
	01-1513.00					RETIREMENT LOAN PAYMENT			2,215.81	0.00
25572	2/7/2018	2/7/2018			7,177.38					Posted
	01-1502.00					RETIREMENT NEW			7,177.38	0.00
	Consolidated Management Co.									
25559	1/25/2018	1/25/2018			97.36					Ck# 476 Printed
	04-3205.00					meals for Taylor			97.36	0.00
	Custer County Treasurer									
25606	2/13/2018	2/13/2018			13,184.14					Posted
	01-3217.00					Communications Interlocal Payment			13,184.14	0.00
	Custer Public Power									
25582	2/6/2018	2/6/2018			128.74					Ck# 489 Printed
	11-3416.00					CD Cell Power			128.74	0.00
	Dan Anderson									
25616	2/13/2018	2/13/2018			51.46					Posted
	09-3223.00					flow meter shipping			51.46	0.00
	Deere Credit Inc.									
25622	2/13/2018	2/13/2018			216.51					Posted
	09-3410.00					mower lease			216.51	0.00
	Dept Correctional SVCS									
25619	2/13/2018	2/13/2018			200.00					Posted
	06-3410.00					dumpster for fire station			200.00	0.00
	Doug Staab									
25623	2/13/2018	2/13/2018			1,840.39					Posted
	12-4200.01					Cameras for Library			1,840.39	0.00
	EFTPS Online Payment									
25550	1/24/2018	1/24/2018			1,940.84					Ck# 469 Printed
	01-1500.00					MEDICARE			1,940.84	0.00
25551	1/24/2018	1/24/2018			5,389.01					Ck# 469 Printed
	01-1500.00					FEDERAL MARRIED			3,165.30	0.00
	01-1500.00					FEDERAL SINGLE			2,223.71	0.00
									5,389.01	0.00

## Accounts Payable Detail Listing

City of Broken Bow

**Vend# Vendor Name**

<u>Pay#</u>	<u>Post Date</u>	<u>Due Date</u>	<u>Amount</u>	<u>Invoice</u>	<u>Date</u>	<u>PO#</u>	<u>Date</u>	<u>Status</u>
	<u>Account#</u>	<u>Work Order</u>		<u>Description</u>			<u>Debit</u>	<u>Credit</u>
<b>EFTPS Online Payment (continued)</b>								
25552	1/24/2018	1/24/2018	8,298.82					Ck# 469 Printed
	01-1500.00			SOCIAL SECURITY			8,298.82	0.00
25576	2/7/2018	2/7/2018	1,939.70					Ck# 485 Printed
	01-1500.00			MEDICARE			1,939.70	0.00
25577	2/7/2018	2/7/2018	5,412.14					Ck# 485 Printed
	01-1500.00			FEDERAL MARRIED			3,125.74	0.00
	01-1500.00			FEDERAL SINGLE			2,286.40	0.00
							5,412.14	0.00
25578	2/7/2018	2/7/2018	8,293.92					Ck# 485 Printed
	01-1500.00			SOCIAL SECURITY			8,293.92	0.00
<b>Eakes Office Products</b>								
25600	2/13/2018	2/13/2018	205.01					Posted
	01-3216.00			copies			120.35	0.00
	01-3223.00			copies			84.66	0.00
							205.01	0.00
<b>Evans Feed Co.</b>								
25626	2/13/2018	2/13/2018	164.15					Posted
	08-3345.00			stock salt			164.15	0.00
<b>Family Heritage</b>								
25547	1/24/2018	1/24/2018	56.00					Ck# 423 Printed
	01-1501.00			FAMILY HERITAGE			56.00	0.00
25573	2/7/2018	2/7/2018	56.00					Posted
	01-1501.00			FAMILY HERITAGE			56.00	0.00
<b>Fyr-Tek</b>								
25597	2/13/2018	2/13/2018	611.91					Posted
	06-3310.00			yearly services on computer			611.91	0.00
<b>Garrett Tires &amp; Treads</b>								
25631	2/13/2018	2/13/2018	137.50					Posted
	08-3310.00			flat repair			137.50	0.00
<b>Gateway Motors Inc</b>								
25584	2/13/2018	2/13/2018	221.04					Posted
	04-3225.00			oil changes			221.04	0.00
<b>General Traffic Controls</b>								
25642	2/13/2018	2/13/2018	121.60					Posted
	08-3422.00			traffic signal parts			121.60	0.00
<b>Great Plains Communications</b>								
25620	2/13/2018	2/13/2018	70.95					Posted
	08-3221.00			Internet			35.48	0.00
	09-3221.00			Internet			35.47	0.00
							70.95	0.00
<b>LaQuinta Inns &amp; Suites</b>								
25589	2/13/2018	2/13/2018	1,383.30					Posted
	05-3313.00			winter conference rooms			1,383.30	0.00
<b>League of Municipalities</b>								
25612	2/13/2018	2/13/2018	375.00					Posted
	01-3205.00			Neal Neth Mid-Winter Conference			375.00	0.00
<b>Marriott Cornhusker Hotel</b>								
25611	2/13/2018	2/13/2018	220.00					Posted
	08-3205.00			Monte Hotel Room for Conference			220.00	0.00
<b>Mead Lumber</b>								
25632	2/13/2018	2/13/2018	1,675.99					Posted
	09-3339.00			portable restroom supplies			1,670.70	0.00
	08-3310.00			supplies			5.29	0.00
							1,675.99	0.00
<b>Michael Todd &amp; Co</b>								
25633	2/13/2018	2/13/2018	616.04					Posted
	08-3347.00			hazard markers			616.04	0.00

## City of Broken Bow

<u>Vend#</u>	<u>Vendor Name</u>		<u>Pay#</u>	<u>Post Date</u>	<u>Due Date</u>	<u>Amount Invoice</u>	<u>Date</u>	<u>PO#</u>	<u>Date</u>	<u>Status</u>
	<u>Account#</u>	<u>Work Order</u>				<u>Description</u>			<u>Debit</u>	<u>Credit</u>
	<b>Municipal Emergency Services (continued)</b>									
25586	2/13/2018	2/13/2018			942.93					Posted
	06-3310.01					headnet repairs			160.69	0.00
	06-3310.00					annual SCBA flow test			782.24	0.00
									942.93	0.00
	<b>Myers Construction Co</b>									
25638	2/13/2018	2/13/2018			20,020.00					Posted
	08-3222.10					snow removal			20,020.00	0.00
	<b>NMC Exchange LLC</b>									
25628	2/13/2018	2/13/2018			1,116.70					Posted
	08-3310.00					parts and supplies			1,116.70	0.00
1	<b>Nebraska Child Support Payment Center</b>									
25549	1/24/2018	1/24/2018			169.65					Ck# 471 Printed
	01-1503.00					CHILD SUPPORT-NE			169.65	0.00
25575	2/7/2018	2/7/2018			169.65					Ck# 487 Printed
	01-1503.00					CHILD SUPPORT-NE			169.65	0.00
	<b>Nebraska Concrete Paving Association</b>									
25618	2/13/2018	2/13/2018			62.50					Posted
	08-3206.00					membership			62.50	0.00
	<b>Nebraska Economic Development Assoc</b>									
25555	1/24/2018	1/24/2018			100.00					Ck# 472 Printed
	01-3206.00					Brents 2018 Membership			100.00	0.00
	<b>Nebraska Mun Clerks Association</b>									
25565	1/30/2018	1/30/2018			35.00					Ck# 481 Printed
	01-3206.00					Membership for Steph			35.00	0.00
	<b>OSA/Computers Plus</b>									
25592	2/13/2018	2/13/2018			181.39					Posted
	05-3223.00					office supplies			71.85	0.00
	06-3223.00					office supplies			13.30	0.00
	04-3223.00					office supplies			96.24	0.00
									181.39	0.00
	<b>O'Brien's True Value</b>									
25603	2/13/2018	2/13/2018			81.82					Posted
	09-3339.00					supplies			49.27	0.00
	08-3310.00					supplies			32.55	0.00
									81.82	0.00
25645	2/13/2018	2/13/2018			285.18					Posted
	09-3339.00					ice melt			142.59	0.00
	02-3311.00					ice melt			142.59	0.00
									285.18	0.00
	<b>Omaha State Bank</b>									
25548	1/24/2018	1/24/2018			462.50					Ck# 474 Printed
	01-1501.00					HSA			462.50	0.00
25574	2/7/2018	2/7/2018			462.50					Posted
	01-1501.00					HSA			462.50	0.00
	<b>Overnite Auto</b>									
25643	2/13/2018	2/13/2018			757.48					Posted
	08-3310.00					fuel pump			757.48	0.00
	<b>Pentair Aquatic Eco Systems</b>									
25625	2/13/2018	2/13/2018			194.96					Posted
	09-3430.00					aerator repairs for lake			194.96	0.00
	<b>Plains Equipment Group</b>									
25605	2/13/2018	2/13/2018			368.59					Posted
	09-3310.00					filters			368.59	0.00
	<b>Platte Valley Communications</b>									
25590	2/13/2018	2/13/2018			1,533.50					Posted
	06-3410.00					4 pagers			1,236.00	0.00
	04-3411.00					radio repairs			297.50	0.00
									1,533.50	0.00

## Accounts Payable Detail Listing

City of Broken Bow

**Vend# Vendor Name**

<b>Pay#</b>	<b>Post Date</b>	<b>Due Date</b>	<b>Amount</b>	<b>Invoice</b>	<b>Date</b>	<b>PO#</b>	<b>Date</b>	<b>Status</b>
	<b>Account#</b>	<b>Work Order</b>		<b>Description</b>			<b>Debit</b>	<b>Credit</b>
<b>Powerplan (continued)</b>								
25630	2/13/2018	2/13/2018	123.13					Posted
	08-3310.00			mirror			123.13	0.00
<b>Prachts Ace Hardware</b>								
25599	2/13/2018	2/13/2018	738.76					Posted
	08-3310.00			hardware and supplies			69.89	0.00
	06-3223.00			hardware and supplies			19.98	0.00
	09-3311.00			hardware and supplies			215.64	0.00
	09-3339.00			hardware and supplies			261.14	0.00
	07-3223.00			hardware and supplies			172.11	0.00
							<u>738.76</u>	<u>0.00</u>
<b>Presto X Company</b>								
25644	2/13/2018	2/13/2018	101.65					Posted
	02-3311.00			Pest Service			101.65	0.00
<b>Pristine Cleaning, LLC</b>								
25621	2/13/2018	2/13/2018	375.00					Posted
	02-3419.01			Cleaning Service			375.00	0.00
<b>Public Agency Training Council</b>								
25596	2/13/2018	2/13/2018	295.00					Posted
	04-3205.00			407 training			295.00	0.00
<b>Radiology Services PC</b>								
25647	2/13/2018	2/13/2018	166.00					Posted
	04-3437.00			radiology for DUI arrest			166.00	0.00
<b>Register of Deeds</b>								
25558	1/24/2018	1/24/2018	392.00					Ck# 475 Printed
	01-3223.20			lien releases			392.00	0.00
25560	1/25/2018	1/25/2018	286.00					Ck# 421 Printed
	01-3223.20			filing fees-check manually written			286.00	0.00
<b>Ron Ripp Construction</b>								
25629	2/13/2018	2/13/2018	1,185.00					Posted
	08-3311.00			door repairs			1,185.00	0.00
<b>S&amp;L Sanitary Service</b>								
25617	2/13/2018	2/13/2018	49.30					Posted
	09-3219.00			trash around the square			49.30	0.00
<b>Safety Kleen Corp.</b>								
25636	2/13/2018	2/13/2018	186.96					Posted
	08-3310.00			parts washer service			186.96	0.00
<b>Site One Landscape Supply</b>								
25604	2/13/2018	2/13/2018	655.60					Posted
	09-3339.00			ice melt			655.60	0.00
<b>State Income Tax WH NE Online Payment</b>								
25553	1/24/2018	1/24/2018	2,348.17					Ck# 470 Printed
	01-1500.00			STATE MARRIED			1,455.76	0.00
	01-1500.00			STATE SINGLE			892.41	0.00
							<u>2,348.17</u>	<u>0.00</u>
25579	2/7/2018	2/7/2018	2,370.96					Ck# 486 Printed
	01-1500.00			STATE MARRIED			1,452.16	0.00
	01-1500.00			STATE SINGLE			918.80	0.00
							<u>2,370.96</u>	<u>0.00</u>
<b>Steve Scott</b>								
25591	2/13/2018	2/13/2018	45.60					Posted
	04-3223.00			postage			45.60	0.00
<b>Trotter's Whoa &amp; Go</b>								
25634	2/13/2018	2/13/2018	421.84					Posted
	08-3225.00			Fuel			421.84	0.00
<b>Van Diest Supply Co</b>								
25635	2/13/2018	2/13/2018	13,230.00					Posted
	08-3410.00			ULV			13,230.00	0.00

## Accounts Payable Detail Listing

City of Broken Bow

Vend# Vendor Name

<u>Pay#</u>	<u>Post Date</u>	<u>Due Date</u>	<u>Amount</u>	<u>Invoice</u>	<u>Date</u>	<u>PO#</u>	<u>Date</u>	<u>Status</u>
	<u>Account#</u>	<u>Work Order</u>		<u>Description</u>			<u>Debit</u>	<u>Credit</u>
<b>Verizon Wireless (continued)</b>								
25594	2/13/2018	2/13/2018	132.54					Posted
	04-3221.00			Police Internet for Ipad			132.54	0.00
<b>Viaero Wireless</b>								
25609	2/13/2018	2/13/2018	280.99					Posted
	08-3221.00			telephone			39.11	0.00
	06-3221.00			telephone			19.56	0.00
	05-3221.00			telephone			134.47	0.00
	09-3221.00			telephone			39.11	0.00
	03-3221.00			telephone			48.74	0.00
							280.99	0.00
<b>Village Uniform</b>								
25601	2/13/2018	2/13/2018	154.91					Posted
	02-3223.01			rugs			101.30	0.00
	05-3332.00			laundry			53.61	0.00
							154.91	0.00
<b>Wenquist Inc.</b>								
25598	2/13/2018	2/13/2018	1,905.69					Posted
	02-3310.00			lift batteries			246.54	0.00
	08-3350.00			20V power tools			999.97	0.00
	08-3310.00			supplies			659.18	0.00
							1,905.69	0.00
<b>Wholeness Healing Center PC</b>								
25567	1/31/2018	1/31/2018	200.00					Ck# 483 Printed
	01-3202.00			presentation/training			200.00	0.00

187,964.96 107 Non-voided payables listed.

## Report Setup

AP - Accounts Payable Listing : Vendor Name

## Filter Options

Starting: 1/24/2018

Ending: 2/13/2018

Banks: All

Payable Status: Posted, Printed, ACH, Recorded, Voided

All Vendors Selected

1/24/18 Payroll 48,387.33

2/7/18 Payroll 47,859.04

# Check Approval List - GL Account

2/8/2018 9:37:17 AM

City of Broken Bow

Page 1 of 4

<u>Vendor Name</u>	<u>Invoice</u>	<u>Invoice Description</u>	<u>Account Description</u>	<u>Amount</u>
<b>General</b>				
Aflac	BBHA Aflac		Health/Life/Acc Insuranc	(\$0.09)
Aflac	BBHA Aflac		Health/Life/Acc Insuranc	\$287.91
Aflac	BBHA Aflac		Health/Life/Acc Insuranc	(\$2.02)
Aflac	PRE TAX AFLAC		Health/Life/Acc Insuranc	\$891.94
Aflac	AFLAC POST TAX		Health/Life/Acc Insuranc	\$182.88
Aflac	PRE TAX AFLAC		Health/Life/Acc Insuranc	\$892.45
Aflac	AFLAC POST TAX		Health/Life/Acc Insuranc	\$183.40
Automated Printing, Inc.	W-2, 1099 and 1094/1095 B Forms		Supplies & Postage	\$480.12
BNSF Railway Company	land lease		Miscellaneous Expense	\$335.99
Brent Clark	mileage		Travel & Meeting Expen:	\$79.56
Broken Bow Airport Authority	monthly payment		Airport Monthly Payment	\$1,083.33
Broken Bow Chamber of Commerce	membership		City Promotions	\$350.00
Broken Bow Municipal Utilities	utilities		Weather Station Expens	\$25.48
Broken Bow Postmaster	return lights		Supplies & Postage	\$13.50
Century Link	telephone and internet		Telephone/Internet	\$144.41
City Flex Benefit Plan	BBHA Flex		Health/Life/Acc Insuranc	\$100.00
City Flex Benefit Plan	SELECT FLEX-UNREIMBURSED M/D/V		Health/Life/Acc Insuranc	\$130.21
City Flex Benefit Plan	SELECT FLEX-UNREIMBURSED M/D/V		Health/Life/Acc Insuranc	\$130.21
City of Broken Bow	CD Cell Closure Funds		CD Cell Financial Assist.	\$3,495.00
City of Broken Bow - Health Insurance	health insurance		Health/Life/Acc Insuranc	\$5,228.06
City of Broken Bow - Health Insurance	HEALTH INS		Health/Life/Acc Insuranc	\$3,610.68
City of Broken Bow - Health Insurance	HEALTH INS		Health/Life/Acc Insuranc	\$3,610.68
City of Broken Bow - Health Insurance	health insurance		Health Insurance	\$3,090.78
City of Broken Bow Pension Fund	BBHA Pension		Pension	\$925.94
City of Broken Bow Pension Fund	RETIREMENT NEW		Pension	\$7,177.38
City of Broken Bow Pension Fund	RETIREMENT NEW		Pension	\$6,752.64
City of Broken Bow Pension Fund	RETIREMENT LOAN PAYMENT		Loan Payment	\$1,969.77
City of Broken Bow Pension Fund	RETIREMENT LOAN PAYMENT		Loan Payment	\$2,215.81
Custer County Treasurer	communications interlocal payment		Radio Communications	\$13,184.14
EFTPS Online Payment	MEDICARE		Payroll Taxes	\$1,939.70
EFTPS Online Payment	FEDERAL		Payroll Taxes	\$3,125.74
EFTPS Online Payment	FEDERAL		Payroll Taxes	\$2,286.40
EFTPS Online Payment	FICA		Payroll Taxes	\$8,293.92
EFTPS Online Payment	MEDICARE		Payroll Taxes	\$1,940.84
EFTPS Online Payment	FEDERAL		Payroll Taxes	\$2,223.71
EFTPS Online Payment	FEDERAL		Payroll Taxes	\$3,165.30
EFTPS Online Payment	FICA		Payroll Taxes	\$8,298.82
Eakes Office Products	copies and office supplies		Copier Maint/Expense	\$120.35
Eakes Office Products	copies and office supplies		Supplies & Postage	\$84.66
Family Heritage	FAMILY HERITAGE		Health/Life/Acc Insuranc	\$56.00
Family Heritage	FAMILY HERITAGE		Health/Life/Acc Insuranc	\$56.00
League of Municipalities	Neal Neth Mid-Winter Conference		Travel & Meeting Expen:	\$375.00
Nebraska Child Support Payment Center	CHILD SUPPORT-NE		Child Support	\$169.65
Nebraska Child Support Payment Center	CHILD SUPPORT-NE		Child Support	\$169.65
Nebraska Economic Development Assoc	Brents 2018 Membership		Association Dues	\$100.00
Nebraska Mun Clerks Association	Membership for Steph		Association Dues	\$35.00
Omaha State Bank	HSA		Health/Life/Acc Insuranc	\$462.50
Omaha State Bank	HSA		Health/Life/Acc Insuranc	\$462.50
Register of Deeds	lien releases		Filing Fees	\$392.00
Register of Deeds	filing fees-check manually written		Filing Fees	\$286.00
State Income Tax WH NE Online Paymei	STATE		Payroll Taxes	\$1,452.16
State Income Tax WH NE Online Paymei	STATE		Payroll Taxes	\$1,455.76
State Income Tax WH NE Online Paymei	STATE		Payroll Taxes	\$918.80
State Income Tax WH NE Online Paymei	STATE		Payroll Taxes	\$892.41
Wholeness Healing Center PC	presentation/training		Education and Training	\$200.00
			<b>Total General</b>	<b>\$95,533.03</b>
<b>Municipal Building</b>				
Black Hills Energy	gas		Utilities	\$1,284.21
Broken Bow Municipal Utilities	utilities		Utilities	\$782.49
Obrien's True Value	ice melt		Maintenance & Repair B	\$142.59
Presto X Company	pest control		Maintenance & Repair B	\$101.65
Pristine Cleaning, LLC	cleaning service		Contracted Services	\$375.00
Village Uniform	rugs and laundry		Building Cleaning Suppli	\$101.30
Wenquist Inc.	lift batteries/tools/supplies		Maint/Repair Equipment	\$246.54
			<b>Total Municipal Building</b>	<b>\$3,033.78</b>
<b>Handi Bus</b>				

# Check Approval List - GL Account

2/8/2018 9:37:17 AM

City of Broken Bow

Page 2 of 4

<u>Vendor Name</u>	<u>Invoice</u>	<u>Invoice Description</u>	<u>Account Description</u>	<u>Amount</u>
<b>Handi Bus</b>				
Broken Bow Mun Utilities		fuel	Gas and Oil	\$369.99
Century Link		telephone and internet	Telephone/Internet	\$61.58
City of Broken Bow - Health Insurance		health insurance	Health Insurance	\$1,616.14
Viaero Wireless		telephone	Telephone/Internet	\$48.74
			Total Handi Bus	\$2,096.45
<b>Police</b>				
Black Hills Energy		gas	Utilities	\$393.39
Blue360 Media		Nebraska crime and traffic law books	Printing & Publication	\$67.25
Broken Bow Mun Utilities		fuel	Gas and Oil	\$678.59
Broken Bow Municipal Utilities		utilities	Utilities	\$67.56
Broken Bow Municipal Utilities		utilities	Dog Care	\$180.43
Capitol One Bank			Telephone/Internet	\$19.90
Capitol One Bank			Maint/Repair Equipment	\$56.35
Century Link		telephone and internet	Telephone/Internet	\$193.81
Chief Supply Corporation		stocking hats and shirts	Uniforms	\$153.46
City of Broken Bow - Health Insurance		health insurance	Health Insurance	\$7,416.56
Consolidated Management Co.		meals for Taylor	Travel & Meeting Expen:	\$97.36
Gateway Motors Inc		oil changes	Gas and Oil	\$221.04
OSA/Computers Plus		office supplies	Supplies & Postage	\$96.24
Platte Valley Communications		paggers and radio repairs	Computers	\$297.50
Public Agency Training Council		407 training	Travel & Meeting Expen:	\$295.00
Radiology Services PC		radiology for DUI arrest	Arrest Related Expense	\$166.00
Steve Scott		postage	Supplies & Postage	\$45.60
Verizon Wireless		internet for ipads	Telephone/Internet	\$132.54
			Total Police	\$10,578.58
<b>Rescue Unit</b>				
Bound Tree Medical		EMS Supplies	Ambulance Supplies	\$344.43
Broken Bow Ambulance Service		winter conference	Training	\$1,163.22
Broken Bow Chamber of Commerce		ambulance incentive	Ambulance Driver Incen:	\$1,085.00
City of Broken Bow - Health Insurance		health insurance	Health Insurance	\$721.17
LaQuinta Inns & Suites		winter conference rooms	Training	\$1,383.30
OSA/Computers Plus		office supplies	Supplies & Postage	\$71.85
Viaero Wireless		telephone	Telephone/Internet	\$134.47
Village Uniform		rugs and laundry	Laundry	\$53.61
			Total Rescue Unit	\$4,957.05
<b>Fire</b>				
Black Hills Energy		gas	Utilities	\$855.81
Broken Bow Municipal Utilities		1/2 new fire station utilities	Utilities	\$81.47
Broken Bow Municipal Utilities		utilities	Utilities	\$545.50
Broken Bow Rural Fire Board		1/2 new fire station utilities	Utilities	\$46.86
City of Broken Bow - Health Insurance		health insurance	Health Insurance	\$721.17
Dept Correctional SVCS		dumpster for fire station	Equipment Purchases	\$200.00
Fyr-Tek		yearly services on computer	Maint/Repair Equipment	\$611.91
Municipal Emergency Services		headnet repairs/annual SCBA flow test	Maint/Repair Equipment	\$782.24
Municipal Emergency Services		headnet repairs/annual SCBA flow test	Main/Rep Equip-Loose E	\$160.69
OSA/Computers Plus		office supplies	Supplies & Postage	\$13.30
Platte Valley Communications		paggers and radio repairs	Equipment Purchases	\$1,236.00
Prachts Ace Hardware		hardware and supplies	Supplies & Postage	\$19.98
Viaero Wireless		telephone	Telephone/Internet	\$19.56
			Total Fire	\$5,294.49
<b>Library</b>				
Black Hills Energy		gas	Utilities	\$885.77
Broken Bow Municipal Utilities		utilities	Utilities	\$361.68
City of Broken Bow - Health Insurance		health insurance	Health Insurance	\$1,626.98
Prachts Ace Hardware		hardware and supplies	Supplies & Postage	\$172.11
			Total Library	\$3,046.54
<b>Street</b>				

# Check Approval List - GL Account

2/8/2018 9:37:17 AM

City of Broken Bow

Page 3 of 4

<u>Vendor Name</u>	<u>Invoice</u>	<u>Invoice Description</u>	<u>Account Description</u>	<u>Amount</u>
<b>Street</b>				
American Public Works Association		APWA membership renewal	Association Dues	\$196.00
Barco		motor grader tire chains	Maint/Repair Equipment	\$1,490.90
Baxter Welding		motor grader snow gate	Maint/Repair Equipment	\$1,059.45
Big State Industrial Supply Inc		LED headlamps	Shop Tools	\$239.40
Broken Bow Mun Utilities		fuel	Gas and Oil	\$447.80
Broken Bow Municipal Utilities		utilities	Utilities	\$2,857.39
Card Services			Maint/Repair Equipment	\$140.15
Carquest of Broken Bow		parts and supplies	Maint/Repair Equipment	\$91.28
Century Link		telephone and internet	Telephone/Internet	\$32.99
City of Broken Bow - Health Insurance		health insurance	Health Insurance	\$5,356.15
Evans Feed Co.		stock salt	Road Materials	\$164.15
Garrett Tires & Treads		flat repair	Maint/Repair Equipment	\$137.50
General Traffic Controls		traffic signal parts	New Street Lights	\$121.60
Great Plains Communications		internet	Telephone/Internet	\$35.48
Marriott Cornhusker Hotel		Monte Hotel Room for Conference	Travel & Meeting Expen:	\$220.00
Mead Lumber		lumber and supplies	Maint/Repair Equipment	\$5.29
Michael Todd & Co		hazard markers	Street Signs	\$616.04
Myers Construction Co		snow removal	Snow Removal	\$20,020.00
NMC Exchange LLC		parts and supplies	Maint/Repair Equipment	\$1,116.70
Nebraska Concrete Paving Association		membership	Association Dues	\$62.50
Obrien's True Value		supplies	Maint/Repair Equipment	\$32.55
Overnite Auto		fuel pump	Maint/Repair Equipment	\$757.48
Powerplan		mirror	Maint/Repair Equipment	\$123.13
Prachts Ace Hardware		hardware and supplies	Maint/Repair Equipment	\$69.89
Ron Ripp Construction		door repairs	Maintenance & Repair B	\$1,185.00
Safety Kleen Corp.		parts washer service	Maint/Repair Equipment	\$186.96
Trotter's Whoa & Go		diesel	Gas and Oil	\$421.84
Van Diest Supply Co		ULV	Equipment Purchases	\$13,230.00
Viaero Wireless		telephone	Telephone/Internet	\$39.11
Wenquist Inc.		lift batteries/tools/supplies	Maint/Repair Equipment	\$659.18
Wenquist Inc.		lift batteries/tools/supplies	Shop Tools	\$999.97
			Total Street	\$52,115.88
<b>Park</b>				
Broken Bow Mun Utilities		fuel	Gas and Oil	\$280.24
Broken Bow Municipal Utilities		utilities	Utilities	\$1,224.60
Broken Bow Municipal Utilities		utilities	Utilities	\$1,057.84
Card Services			Maintenance/Repair Gro	\$131.60
Card Services			Maintenance/Repair Gro	\$6.40
Carquest of Broken Bow		parts and supplies	Maint/Repair Equipment	\$47.94
Century Link		telephone and internet	Telephone/Internet	\$32.98
City of Broken Bow - Health Insurance		health insurance	Health Insurance	\$2,297.67
Dan Anderson		flow meter shipping	Supplies & Postage	\$51.46
Deere Credit Inc.		mower lease	Equipment Purchases	\$216.51
Great Plains Communications		internet	Telephone/Internet	\$35.47
Mead Lumber		lumber and supplies	Maintenance/Repair Gro	\$1,670.70
Obrien's True Value		supplies	Maintenance/Repair Gro	\$49.27
Obrien's True Value		ice melt	Maintenance/Repair Gro	\$142.59
Pentair Aquatic Eco Systems		aerator repairs for lake	Melham Lake	\$194.96
Plains Equipment Group		filters	Maint/Repair Equipment	\$368.59
Prachts Ace Hardware		hardware and supplies	Maintenance & Repair B	\$215.64
Prachts Ace Hardware		hardware and supplies	Maintenance/Repair Gro	\$261.14
S&L Sanitary Service		trash	Trash Removal	\$49.30
Site One Landscape Supply		ice melt	Maintenance/Repair Gro	\$655.60
Viaero Wireless		telephone	Telephone/Internet	\$39.11
			Total Park	\$9,029.61
<b>Swimming Pool</b>				
Broken Bow Municipal Utilities		utilities	Utilities	\$189.29
Century Link		telephone and internet	Telephone/Internet	\$59.44
			Total Swimming Pool	\$248.73
<b>Sanitation</b>				
Broken Bow Municipal Utilities		utilities	Sanitation Contract	\$61.69
Custer Public Power		CD Cell Power	Land & Buildings	\$128.74
			Total Sanitation	\$190.43
<b>ST Infra/Capital</b>				
Doug Staab		Cameras for Library	Library	\$1,840.39



# Check Approval List - GL Account

2/8/2018 9:37:17 AM

City of Broken Bow

Page 4 of 4

Vendor Name  
ST Infra/Capital

Invoice   Invoice Description

Account Description

Amount

Total ST Infra/Capital	\$1,840.39
	<u>\$187,964.96</u>

Report Selection: Check Approval List - GL Account  
Date Range Selection: GL Posting Date  
Starting Date: 1/24/2018  
Ending Date: 2/13/2018

1/24/18	Payroll	48,387.33
2/7/18	Payroll	47,859.04

**SafeWise**

5202 Douglas Corrigan Way, Suite #300

Salt Lake City, UT 84116

[www.safewise.com](http://www.safewise.com)

**PRESS RELEASE****FOR IMMEDIATE RELEASE**

For more information please contact:

**SafeWise**

**Attn:** Krystal Rogers

**E-mail:** [krystal.rogers@safewise.com](mailto:krystal.rogers@safewise.com)

**The SafeWise Report Announces the 10 Safest Cities in Nebraska**

SafeWise released its "10 Safest Cities in Nebraska" report on November 27, 2017. To compile this report, SafeWise used the most recent FBI violent and property crime data from 2015 to analyze and rank these cities, which all have a minimum population of 3,000 people.

"Community spirit is a hallmark of cities with low crime rates, and the ten Nebraska cities we've recognized definitely represent the difference involved citizens can make. Only two of the cities on our list reported more than five total violent crimes, and there were no murders reported in any of our safe cities. These kinds of numbers just wouldn't be possible without caring neighbors looking out for one another," safety expert Rebecca Edwards said.

See the full report here: <https://www.safewise.com/blog/safest-cities-nebraska/>

**About SafeWise**

SafeWise is a community-focused security organization committed to increasing safety education, awareness, and preparedness. We help our users [compare security options](#) in an informative and pressure-free environment so they can make the choice that's right for their family. If you have any questions regarding the safest cities reports, please don't hesitate to reach out.



**SafeWise** is proud to present this award to the city of

## **BROKEN BOW**

for their efforts in **community safety** and **crime prevention**.

*Broken Bow was ranked the 5th safest city in Nebraska due to its commitment to the safety and security of its residents.*

A handwritten signature in blue ink, reading "Clair Jones", written over a horizontal line.

**Clair Jones**, Press and Strategic Partnerships



A handwritten signature in blue ink, reading "John Kinnear", written over a horizontal line.

**John Kinnear**, President of SafeWise

# JEO Project Status Report

To: City of Broken Bow: Brent Clark, City Administrator

Date: February 1, 2018

Report Prepared By: Steve Parr



JEO #	Project	Funding Source #	Status	JEO Action	City Action	Schedule
160942*	Downtown Improvements	Local	Project completed	None	None	1-Year Warranty period expires on August 22, 2018
111076*	Comprehensive Plan	Local/NIFA	Project completed	Present to Planning Commission and City Council	Schedule Public Hearings	March 2018
120249*	Library Addition and Renovation	Local	Project completed	Prepare project closeout documents.	Approve project closeout documents.	
141430*	Update Blight Areas	Local	Preparing documents	Preparing maps/legal descriptions and will forward to City	Schedule Public Hearings	March 2018
161982*	Master Trails Plan	Local	Project revised	None	Adopt Plan	
16055*	Electrical Distribution Upgrade	Local	Construction completed	Prepare project closeout documents	Approve project closeout documents	
171495*	Flood Risk Reduction Project	Local/NRD	Development of Plan, waiting formal SWIF go-ahead from USACOE	Develop levee Emergency Action Plan (EAP)	None	Complete EAP and submit to USACOE in March 2018
170078*	South 19 <sup>th</sup> Avenue Improvements	Local	Design	None	Done	

Note: Items in Red are new from previous report.



Return to Agenda

**CITY OF BROKEN BOW  
ORDINANCE NO. 1178**

**AN ORDINANCE OF THE CITY OF BROKEN BOW, CUSTER COUNTY, NEBRASKA  
AMENDING SECTION 30.29: MAYOR AND CITY COUNCIL WAGES, REPEALING  
THE SECTIONS OF ALL PREVIOUS ORDINANCES IN CONFLICT WITH THIS  
ORDINANCE, AND PROVIDING FOR PUBLICATION AND EFFECTIVE DATE.**

**BE IT ORDAINED BY THE MAYOR AND CITY COUNCIL OF THE CITY OF  
BROKEN BOW, CUSTER COUNTY, NEBRASKA:**

Section 1. That Section 30.29 of the Broken Bow Municipal Code be amended to read as follows:

*(A) The Mayor shall be paid an annual wage of \$6,000.00.*

*(B) The City Council shall be paid an annual wage of \$2,100.00. (Neb. RS17-108)*

Section 2. All ordinances or parts of ordinances in conflict with this ordinance are hereby repealed.

Section 3. This ordinance shall be in full force and effect December 1, 2018 and after its approval and publication according to law.

Passed and approved this 13<sup>th</sup> day of February, 2018.

\_\_\_\_\_  
Cecil Burt, Mayor

ATTEST:

\_\_\_\_\_  
Stephanie M. Wright, City Clerk



N E B R A S K A

Rooted. But Not Standing Still.

## Application for Appointment

The purpose of this form is to obtain general information for use in the nomination and confirmation process for appointments by the Mayor and to assist the Mayor in making inquiries concerning the qualifications of applicants for appointment. If you have recently prepared a biography or resume, please attach it to this form.

Please complete this form and return it to: City Clerk, PO Box 504, Broken Bow, NE 68822. Fax (308) 872-6885

Name: Ryan Vonderhe

Home Address: 351 S K Street Broken Bow NE 68822

Home Telephone: (402) 578-4574

Email Address (Optional): ryan.vonderhe@greatwesternbank.com

Employer: Great Western Bank

Business Telephone: (308) 872 6808

Are you a qualified elector of Broken Bow? yes

Why do you want to serve on this board?

to serve community

Do you have any conflict of interests in serving on this board? (if yes, please explain)

Yes ☒ No

Please mark the Boards and Commissions you are interested in serving on:

☐ City Council ☒ Park Board ☐ Planning Commission

☐ Library Board ☐ Board of Adjustment ☐ Housing Authority

☐ Board of Public Works ☐ Community Redevelopment Association (CRA)

**BROKEN BOW**

N E B R A S K A

Reared. But Not Standing Still.

**Application for Appointment**

The purpose of this form is to obtain general information for use in the nomination and confirmation process for appointments by the Mayor and to assist the Mayor in making inquiries concerning the qualifications of applicants for appointment. If you have recently prepared a biography or resume, please attach it to this form.

Please complete this form and return it to: City Clerk, PO Box 504, Broken Bow, NE 68822. Fax (308) 872-6885

Name: Tyson Havranek

Home Address: 319 S. D Street Appt. #304

Home Telephone: 402-984-9890

Email Address (Optional): thavranek9@gmail.com

Employer: Kbear Country

Business Telephone: 308-872-6235

Are you a qualified elector of Broken Bow? yes

Why do you want to serve on this board?

Interested in bringing fresh, and new ideas to the community.

Interested in getting more involved with the Broken Bow community.

Do you have any conflict of interests in serving on this board? (if yes, please explain)

   Yes    No

No

Please mark the Boards and Commissions you are interested in serving on:

   City Council       Park Board      X   Planning Commission

   Library Board       Board of Adjustment       Housing Authority

   Board of Public Works       Community Redevelopment Association (CRA)

## **WASTE COLLECTION SERVICE AGREEMENT**

This agreement made and entered into this 13<sup>th</sup> day February of 2018 by and between the City of Broken Bow, a municipal corporation, hereinafter City and S & L Sanitation Service, owner Sherman Porter, hereinafter S & L Sanitation Service.

**I. FRANCHISE.** That the City does hereby grant unto S & L Sanitation Service the franchise for collecting garbage, rubbish, trash, and waste, as defined by Sec. 4-201 to 4-203 of the Municipal Code of Broken Bow, Nebraska, within the corporate limits of the City of Broken Bow, Nebraska.

**II. TERM OF AGREEMENT.** The term of this agreement shall be for the period beginning the 1<sup>st</sup> day of March, 2018 and ending on the 28<sup>th</sup> day of February, 2023. This agreement may be reviewed by either party each year on its annual date by a written request submitted to the other party by August 1<sup>st</sup> of any year for the term of the agreement. The parties mutually agree that the agreement shall be automatically renewed for an additional Five (5) year period unless the City or S & L Sanitation Service notifies the other in writing at least one hundred twenty (120) days prior to the expiration date.

**III. COLLECTION OF WASTE.** The parties herein agree that this contract is for the collection of acceptable waste placed at the curb or alley with S & L Sanitation Service and the City for the collection to be transferred to the Custer County Transfer Station, Inc. The collection of said waste shall comply with all state and federal regulations pertaining to the collection of solid and liquid waste, and shall further comply with all state and local departments of health concerning said collection of waste. S&L Sanitation Service shall be liable for clean-up of the collection of unacceptable waste and damages arising therefrom.

**IV. EQUIPMENT.** S & L Sanitation Service will provide equipment sufficient to collect and transfer acceptable waste from within the City from each household and commercial businesses and operations that receive utility services. Further, S & L Sanitation Service agrees to furnish at all times during this franchise, and to maintain the same in a good working order, at least two garbage collection trucks which shall be specially designed and constructed for sanitary collection and hauling of garbage, rubbish, trash, and waste. The trucks used for the collection of garbage must comply with the requirements of all state and federal boards of health and requirements delineated therein.

**(a) Collection Times Per Week.** S & L Sanitation Service agrees to collect during this franchise period all garbage, rubbish, trash, and waste as required by customers within the business, industrial, and railroad districts within said municipality, and to collect at least one time per week all garbage, rubbish, trash, and waste within the residential districts and within said municipality.

**V. Fees.** The monthly fees for collection service will be as outline in **Exhibit A** attached hereto.



Small to medium commercial businesses and operations shall be those who receive once a week pickup service of no more than three containers of approximately 30 gallons each. Large commercial businesses and/or operations will be those who receive more than once a week pickup service with more than three containers of 30 gallons each or have a dumpster. Super large commercial businesses and operations shall be those who have large dumpsters, multiple containers, or receive pickup services twice or more per week. Apartment complexes with one utility meter shall be treated as a commercial business or operation. S & L Sanitation Service will bill separately for special circumstances for services not described in the fee schedule.

**VI. INSURANCE.** S & L Sanitation Service agrees to purchase and carry at its own expense workmen's compensation insurance and general insurance coverage of \$1,000,000.00.

**VII. BOND.** S & L Sanitation Service promises and agrees to furnish and file with the Clerk of said City annually a good and sufficient surety bond in the principal amount of \$5,000.00 to guarantee the faithful performance on his part of the covenants herein by him made. The bond shall be filed on or before October 1st of each year.

**VIII. BREACH OF AGREEMENT.** S & L Sanitation Service herein agrees and understands that should S & L Sanitation Service fail to uphold the promises herein described under this agreement that the City may terminate the franchise herein granted, and that S & L Sanitation Service may be liable to the City for damages sustained for breach of agreement.

**IX. ASSIGNMENT OF AGREEMENT.** This franchise shall not be assigned by the second party without prior written approval of the first party. During the term of the franchise herein granted, the City agrees and promises that no license will be granted to any other person or firm for the collection of garbage, rubbish, trash, and waste within the City of Broken Bow. The City will have first right of purchase in the event of a bona fide offer made by a third party. In the event the City doesn't purchase S & L Sanitation Service, the City will not be bound by this agreement with a third party.

In witness whereof, the parties have hereunto executed this agreement on the 13<sup>th</sup> day of February, 2018.

S & L SANITATION

By \_\_\_\_\_  
Sherman Porter

CITY OF BROKEN BOW, CUSTER COUNTY  
NEBRASKA

By \_\_\_\_\_  
Cecil Burt, Mayor

Attest:

\_\_\_\_\_

**EXHIBIT A**  
**MONTHLY COLLECTION FEES BY S&L SANITATION SERVICE**

1. S&L Sanitation Service is requesting an increase in their rates to compensate for a tipping fee increase at the Transfer Station which will begin in January 2014.
2. The City's five year contract with the Custer Transfer Station runs until February 2018. It allows the tipping fees charged to S&L Sanitation Service to be \$0.285 per pound.

**RATE**

<b>RESIDENTIAL</b>	<b>RATE</b>	<b>INCREASE</b>
S&L Sanitation	\$13.50	\$1.00
Transfer Station	\$5.00	\$0
City of Broken Bow	\$0.75	\$0
Total	\$19.25	\$1.00

**SMALL BUSINESS**

S&L Sanitation	\$14.50	\$1.50
Transfer Station	\$11.00	\$0
City of Broken Bow	\$0.75	\$0
Total	\$26.25	\$1.50

**MEDIUM BUSINESS**

S&L Sanitation	\$24.50	\$2.25
Transfer Station	\$11.00	\$0
City of Broken Bow	\$0.75	\$0
Total	\$36.25	\$2.25

**LARGE BUSINESS**

S&L Sanitation	\$45.50	\$4.00
Transfer Station	\$14.00	\$0
City of Broken Bow	\$0.75	\$0
Total	\$60.25	\$4.00

**SUPER LARGE BUSINESS**

Charged by weight and number of trips as determined by the hauler and the City
--

## **WASTE DISPOSAL AGREEMENT**

---

This Waste Disposal Agreement ("Agreement") is made and entered into as of this \_\_\_\_\_ day of February, 2018, by and between the City of Broken Bow, Nebraska (the "City") and Custer Transfer Station, Inc., a Nebraska corporation, (the "Company"). The effective start dates for the fees mentioned in this contract shall be 1st day of March, 2018.

WHEREAS, the Company owns and operates a licensed collection site for the transfer of acceptable waste; and

WHEREAS, the City needs to contract with a provider for the disposal of acceptable waste generated by the households and businesses of the City; and

WHEREAS, the City intends to contract with the qualified collector ("Collector") or create its own sanitation department for the collection for solid waste from the households and businesses of the City;

NOW, THEREFORE, for and in consideration of the mutual promises and other good and valuable consideration of the mutual promises and other good and valuable consideration set forth herein, the parties, intending to be legally bound, hereby agree as follows:

1. **Definitions.** For purposes of this Agreement, the following terms shall have the meanings set forth below.

- a. "Acceptable Waste" shall mean that portion of solid waste which has characteristics such as that collected and disposed of as part of the normal municipal collection of solid waste, excepting, however, unacceptable waste, hazardous waste, burn barrels, fireplace or wood stove ashes and yard waste.
- b. "Hazardous Waste" shall mean (i) any material or substance which, by reason of its composition or characteristics, is regulated as a toxic or hazardous waste as defined in either the Solid Waste Disposal Act, 42 U.S.C. § 6901, et. seq., § 6(3) of the Toxic Substances Control Act, 15 U.S.C. § 2605 (e), or the Nebraska Environmental Protection Act, Nebr. R.R.S. § 81-1501, et. seq., as either may be replaced, amended, expanded or supplemented, or any laws of similar purpose or effect, and any rules, regulations or policies, promulgated thereunder, or in the state laws, as replaced, amended, expanded or supplemented, or any laws with similar purpose or effect, and any rules, regulations or policies promulgated thereunder; (ii) special nuclear or by-products materials within the meaning of

the Atomic Energy Act of 1954; and (iii) any other materials which any governmental agency or unit having appropriate jurisdiction shall determine from time to time is ineligible for collection at the transfer station whether by reason of being hazardous, harmful, toxic, dangerous or otherwise.

- c. "Solid Waste" shall mean all materials or substances discarded or rejected as being spent, useless, worthless or in excess to the owners at the time of such discard or rejection, including but not limited to garbage, trash, rubbish, refuse, industrial, commercial and agricultural waste.
- d. "Unacceptable Waste" shall mean hazardous waste or any other portion of solid waste, the disposal of which, in the reasonable judgment of the Company:
  - i) May present a substantial endangerment to health or safety of the public or Company employees;
  - ii) Would cause applicable air quality or water effluent standards or other applicable standards or any air quality or water effluent or other permit issued to the Company to be violated by the normal operation of the Company transfer station;
  - iii) Reasonable possibility of adversely affecting the operation of the transfer station or the transportation of acceptable waste;
  - iv) Burn barrels, fireplace or wood stove ashes, sludge from air or water pollution control facilities or water supply treatment facilities, ashes, incinerator residue, demolition and construction debris, sewage and other highly diluted water-carried materials or substances and those in gaseous form; or
  - v) Includes used appliances, used oil, car batteries, furniture, carpeting, tires, or yard waste of any kind.
- e. "Household" shall mean a single family residence with waste pick up service once per week.
- f. "Standard Business" shall mean a small to medium commercial business or operation which receives waste pick up once per week and is limited to three waste containers of 30 gallons or less, each. Apartment complexes with one utility meter shall be

treated as a standard business provided the waste does not exceed the limits set forth herein.

- g. "Large Business" shall mean a large commercial business or operation with waste pick up more than once per week with more than three containers of 30 gallons each or one dumpster.

2. **Term.** The term of this Agreement shall be for a period of five (5) years beginning March 1, 2018 and ending February 28, 2023. This Agreement shall automatically renew for an additional period of five (5) years unless either party shall notify the other no less than 120 days prior to the expiration of the term.

The fees set forth in this Agreement may be reviewed by either party by submitting a written request to the other party by August 1 of any contract year. The parties shall review the proposal and shall attempt to negotiate an amendment to this Agreement prior to the commencement of a new contract year which is January 1. In the event that the parties fail to agree to any amended fees by January 1 of any contract year, the fees as set forth in this Agreement shall remain in full force and effect for the succeeding contract year.

3. **Responsibilities/Duties of the Company.** During the term of this Agreement, the Company shall:

- a. Maintain a solid waste transfer station, to accumulate, and prepare for transfer acceptable waste generated by the households and businesses of the City.
- b. Comply with all applicable state and federal laws, rules and regulations relating to the disposal of solid waste.
- c. To obtain all permits and licenses required by applicable laws, rules and regulations and maintain the same in full force and effect.
- d. To transport acceptable waste to the Lexington, Nebraska landfill or such other landfill approved by the City.
- e. To maintain its solid waste transfer station in a clean, neat and sanitary manner.

4. **Responsibilities/Duties of the City.** During the term of this Agreement, the City shall:

- a. Take such actions or resolutions as may be required to approve this Agreement.

- b. Take such action or resolution or enter into such other contracts with the Collector to assure that only acceptable waste is delivered to the Company's transfer station.
- c. To pay directly to the Company, the fees set forth in paragraph 5, hereinbelow.

5. **Fees for Waste Disposal.** The City will pay to the Company the following consideration for the waste disposal service provided by the Company. The City shall pay to the Company on a monthly basis the following fees to dispose of the waste generated by the City's households and businesses:

- a. \$5.00 per household or business (all categories, i.e., standard, large and extra large businesses).
- b. In addition to the base fee of \$5.00 per month, the City shall pay to the Company an additional \$6.00 per month for each standard business.
- c. In addition to the base fee of \$5.00 per month, the City shall pay to the Company an additional \$9.00 per month for each large business.

6. **Tipping Fees:**

- a. The City and Company will attempt to negotiate the tipping fees charged to the Collector (currently S&L Sanitation); however, if an agreement between the City and the Company cannot be reached by August 31, 2018, then the tipping fees for the collector shall be .0285/lbs. as of October 1, 2018. That with the exception of the tipping fee charged to the Collector, the Company is free to make changes to tipping fees for all other transactions.

The City further agrees that the rates set forth above may be adjusted semi-annually by the Company to reflect changes, laws, rules or regulations necessitated by state, federal, local laws or tipping fees at the destination landfill. In the event of such a change, the Company shall notify the City no less than 60 days prior to such rate change and set forth the reason for such change.

The City further agrees that in the event the City annexes any property which holds a large business that produces more than the average amount of waste, the City and the Company shall calculate an additional fee to be paid to the Company based upon the average weight of such business' waste.

7. **Acceptance of Waste.** During the term of this Agreement, the Company reserves the following rights with regard to the acceptance of waste at its transfer station.

- a. **Inspection of Solid Waste.** The Company in its sole discretion shall have the right to inspect at the transfer station, the contents of any vehicle delivering solid waste to the transfer station to determine the presence of hazardous waste or unacceptable waste, including the right to require the hauler operating such vehicle to unload the contents in the receiving area for purposes of inspection. The Company may test samples of such solid waste to determine whether it constitutes unacceptable waste or hazardous waste, and the costs of such tests shall be borne by the individual delivering said waste. If any vehicle is found to contain hazardous waste or unacceptable waste, the Company may reject delivery, require the hauler to reload the same and transport the same from the facility.
- b. **Right of Rejection.** The Company may reject solid waste if: (i) The waste is delivered at hours other than the normal operating hours of the facility, or (ii) the facility is unable to accept or dispose or otherwise handle such waste as a result of an event of force majeure; (iii) hazardous or unacceptable waste is delivered; (iv) it contains used appliances, yard waste, used oil, car batteries, tires, used large car parts, furniture, carpeting or other large unacceptable items not defined under acceptable waste.

Upon notice from the Company of the discovery of unacceptable waste or hazardous waste delivered by an eligible resident or business, the City, or its agent S&L Sanitation, shall be responsible for removing any such waste delivered to the facility. The City, or its agent S&L Sanitation, may request the Company to assist it in removing said waste. The City, or its agent S&L Sanitation, in conjunction with the Company, shall promptly remove from the facility any unacceptable waste or hazardous waste delivered by the eligible resident or business and shall transport and dispose of such unacceptable waste or hazardous waste in accordance with applicable laws and regulations.

If hazardous or unacceptable waste has been commingled prior to its discovery, the Company and City, or its agent S&L Sanitation, shall attempt to identify the source of the hazardous or unacceptable waste, and the cost of disposal shall be borne

by the resident or business which delivered the same to the Company. If the Company and City, or its agent S&L Sanitation, are unable to determine the source of the hazardous or unacceptable waste then each resident and business having contracted with the Company shall share, in proportion to its patrons, the cost of the disposal of the same.

All activities of the Company with respect to such unacceptable waste or hazardous waste shall be as agent for the City. The City shall reimburse the Company for any costs incurred by the Company for the performance of its obligations under this paragraph 6(b), or as a result of the delivery to the facility of any unacceptable waste or hazardous waste by an eligible City household or business.

8. **Insurance.** The Company agrees that during the term of this Agreement that it shall carry, at its own expense, general liability insurance in the aggregate amount of not less than one million dollars (\$1,000,000.00) and Workers' Compensation Insurance. Upon request, the Company shall furnish a certificate of insurance to the City evidencing that all such insurance is in full force and effect.

9. **Hold Harmless.** The Company agrees that it shall protect, indemnify and hold harmless the City and its officers, members, employees and agents (the "City Indemnified Parties") from and against all liabilities, damages, claims, demands, judgments, losses, costs, expenses, suits, or actions and attorney's fees, and shall defend the City Indemnified Parties in any suit, including appeals arising out of negligence or willful misconduct of the Company or any of its agents or employees in connection with its obligations or rights under this Agreement. The Company is not, however, required to reimburse or indemnify any City Indemnified Party for loss or claim due to the negligence or willful misconduct of any City Indemnified Party, and the City Indemnified Party whose negligence or willful misconduct is adjudged to have caused such loss or claim shall reimburse the Company for the costs of defending any suit.

The City agrees that it shall protect, indemnify, and hold harmless the Company, and its officers, members, employees and agents (the "Company Indemnified Parties") from and against all liabilities, actions, damages, claims, demands, judgments, losses, costs, expenses, suits, or actions and attorney's fees, and shall defend the Company Indemnified Parties in any suit, including appeals arising out of the negligence or willful misconduct of the City or any of its agents or employees in connection with the City's obligations or rights under this Agreement. The City is not required to reimburse or indemnify any Company Indemnified Party for loss or claim due to the negligence or willful misconduct of any Company Indemnified Party, and the Company Indemnified Party whose



negligence or willful misconduct is adjudged to have caused such loss or claim shall reimburse the City for the costs of defending any suit.

10. **Force Majeure**. Notwithstanding anything to the contrary contained in this Agreement, neither the City nor the Company shall be liable to the other for any failure or delay in performance of any obligation under this Agreement due to the occurrence of an event constituting force majeure and any such failure or delay shall not constitute an event of default under this Agreement.

An event constituting force majeure means any act, event or condition, which is beyond the reasonable control of the party adversely affected thereby, that has had, or may reasonably be expected to have a material adverse effect on the rights or the obligations of the parties under this Agreement, or a material adverse effect on the facility or the ownership, possession or operation of the facility by the Company. Such events shall include, but not be limited to, the following: an act of God, adverse weather, fire, explosion, flood, war, sabotage, change in law or condemnation.

The party experiencing an event constituting force majeure shall promptly notify the other party of such event and its estimated duration and impact on obligations under this Agreement. Additionally, such party shall provide prompt notice of the cessation of such event of force majeure. Whenever such event of force majeure shall occur, the party claiming to be adversely affected thereby shall, as quickly as reasonably possible, use best efforts to eliminate the cause therefor, and resume performance under this Agreement.

11. **Assignment**. Neither party may assign its interest in this Agreement to any other entity without the express written permission of the other party, which consent shall not be unreasonably withheld.

12. **Governing Law**. The internal law, not the law of conflicts, of the State of Nebraska will govern all questions concerning the construction, validity and interpretation of this Agreement.

13. **Severability**. If any term or provision of this Agreement is held invalid or unenforceable to any extent by any Court of competent jurisdiction, the remainder of the paragraph and the balance of this Agreement shall not be affected thereby, and this Agreement shall be interpreted as if such provisions or portions thereof were not contained herein.

14. **Default**. In the event either party should default in the performance of the terms and conditions of this Agreement to be performed by that party, the other party shall give notice thereof, and the defaulting party shall have thirty (30) days thereafter to correct the deficiency. In the event the deficiency is corrected, this Agreement shall continue, notwithstanding such deficiency. In the event either party should fail to correct the deficiency, the non-breaching party shall

have such rights and remedies as are allowed by law, and the election of forfeiture of any one remedy shall not bar the election or cause the forfeiture of any other remedy. Time shall be construed to be of the essence of this Agreement.

15. **Binding Effect.** This Agreement shall be binding upon the successors, assigns and legal representatives of the parties hereto.

16. **Entirety.** This Agreement constitutes the entire Agreement between the parties, and any other agreement between the parties, unless reduced to writing and executed by the parties, shall be null and void.

IN WITNESS WHEREOF, the parties have executed this Agreement as of the day and year first above written.

**CITY OF BROKEN BOW,  
NEBRASKA, a Municipality**

**CUSTER TRANSFER STATION,  
INC., A Nebraska Corporation**

By: \_\_\_\_\_  
Cecil Burt, Mayor

By: \_\_\_\_\_  
Perry O. Myers, President

ATTEST:

\_\_\_\_\_  
Secretary

**RESOLUTION 2018-9**

**RESOLUTION APPROVING LOT SPLIT**

BE IT RESOLVED BY THE MAYOR AND COUNCIL OF THE CITY OF BROKEN BOW, NEBRASKA:

WHEREAS, the owner of the real estate, described on the plat attached hereto, has petitioned for a split of said real estate into parcels; and,

WHEREAS, said real estate lies within the city's zoning jurisdiction of the City of Broken Bow, Custer County, Nebraska; and,

WHEREAS, the division and sale of a portion of said real estate as described on the attached plat, exhibit A, should be allowed without the necessity of a subdivision of the real estate.

NOW THEREFORE, BE IT RESOLVED BY THE MAYOR AND COUNCIL OF THE CITY OF BROKEN BOW, NEBRASKA:

That the lot split of the above described premises is hereby approved.

PASSED AND APPROVED this 13<sup>th</sup> day of January, 2018.

---

Cecil Burt, Mayor

ATTEST:

---

Stephanie Wright, City Clerk

(S E A L)



## Application for Lot Split

Broken Bow, Nebraska

Complete this form and submit it to the City of Broken Bow Planning and Zoning Office with the following attachments:

- A detailed drawing/map of the property involved, showing the current structures and the proposed new property lines. A survey is highly recommended, however, the City is not by this application certifying or verifying the actual lot lines, survey lines or pin locations. The applicant is responsible for the legal description herein.
- A certified list of all the property owners within 200 feet of the proposed lot to be split. This list must be prepared by a registered abstractor.
- Filing fee - \$50.00

Property Owner/Applicant \_\_\_\_\_

Property Address \_\_\_\_\_ Legal Description \_\_\_\_\_

What is the intended use for the property after the lot split is granted? \_\_\_\_\_

Is a new street or alley needed if this lot split is granted? Yes \_\_\_\_ No \_\_\_\_

Is a vacation of streets, alleys, setback lines, access control or easements required for this particular lot split? Yes \_\_\_\_ No \_\_\_\_

Will this lot split require an increase in service requirements by the City of Broken Bow? (utilities, traffic control, streets) Yes \_\_\_\_ No \_\_\_\_

Will this lot split interfere with maintaining existing services? Yes \_\_\_\_ No \_\_\_\_

Does the granting of this lot split lessen the right-of-way by the City of Broken Bow? Yes \_\_\_\_ No \_\_\_\_

Does this lot split result in a substandard sized lot or parcel? Yes \_\_\_\_ No \_\_\_\_

Will this lot have direct access to a street? Yes \_\_\_\_ No \_\_\_\_

Will this lot interfere with maintaining existing services? Yes \_\_\_\_ No \_\_\_\_

Has this lot been previously split in accordance with current zoning regulations? Yes \_\_\_\_ No \_\_\_\_

Applicant \_\_\_\_\_ Date \_\_\_\_\_ Phone \_\_\_\_\_

---

### For Office Use Only

Application Approved \_\_\_\_\_ Not Approved \_\_\_\_\_

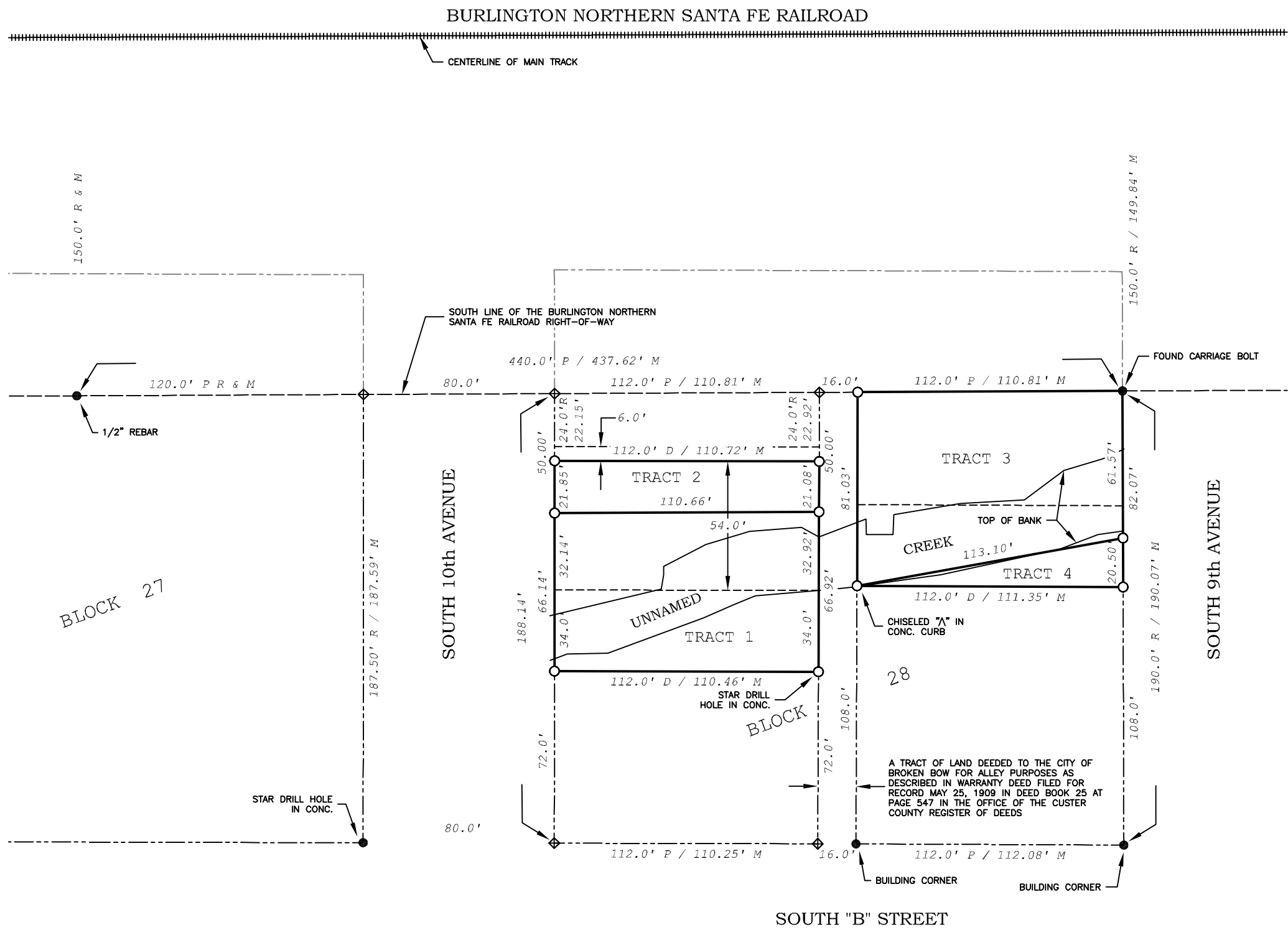
Accepted by \_\_\_\_\_ Date \_\_\_\_\_

Payment received: mo. \_\_\_\_\_ day. \_\_\_\_\_ yr. \_\_\_\_\_

Cash \_\_\_\_\_ Check \_\_\_\_\_

ADMINISTRATIVE LOT SPLIT

BEING A PART OF BLOCK TWENTY-EIGHT (28), ORIGINAL TOWN OF BROKEN BOW, CUSTER COUNTY, NEBRASKA.



LEGAL DESCRIPTION FOR TRACT 1

A tract of land being part of Block Twenty-eight (28), Original Town of Broken Bow, Custer County, Nebraska, more particularly described as follows: Referring to the Southwest corner of Block 28, Original Town of Broken Bow, Custer County, Nebraska; thence Northerly, on the West line of said Block 28, a distance of 72.0 feet to the ACTUAL PLACE OF BEGINNING, said place of beginning being the Southwest corner of a tract of land as described in Warranty Deed filed for record April 13, 2006 in Deed Book 217 at page 32 in the Office of the Custer County Register of Deeds; thence continuing Northerly, on the West line of said Block 28, a distance of 66.14 feet to a point being 50.00 feet South of the South line of the Burlington Northern Santa Fe Railroad right-of-way; thence leaving the West line of said Block 28, Easterly and parallel with the South line of the Burlington Northern Santa Fe Railroad right-of-way, a distance of 110.66 feet to a point on the West line of a tract of land deeded to the City of Broken Bow for alley purposes as described in Warranty Deed filed for record May 25, 1909 in Deed Book 25 at page 547 in the Office of the Custer County Register of Deeds; thence Southerly, on the West line of said tract of land deeded to the City of Broken Bow in Warranty Deed filed in Deed Book 25 at page 547, a distance of 66.92 feet to the Southeast corner of said tract of land described in Warranty Deed filed in Deed Book 217 at page 32; thence Westerly, on the South line of said tract of land described in Warranty Deed filed in Deed Book 217 at page 32, a distance of 110.46 feet to the place of beginning.

LEGAL DESCRIPTION FOR TRACT 2

A tract of land being part of Block Twenty-eight (28), Original Town of Broken Bow, Custer County, Nebraska, more particularly described as follows: Referring to the Southwest corner of Block 28, Original Town of Broken Bow, Custer County, Nebraska; thence Northerly, on the West line of said Block 28, a distance of 138.14 feet to the ACTUAL PLACE OF BEGINNING, said place of beginning being a point 50.00 feet South of the South line of the Burlington Northern Santa Fe Railroad right-of-way; thence continuing Northerly, on the West line of said Block 28, a distance of 21.85 feet to the Northwest corner of a tract of land as described in Warranty Deed filed for record April 13, 2006 in Deed Book 217 at page 32 in the Office of the Custer County Register of Deeds; thence leaving the West line of said Block 28, Easterly a distance of 110.72 feet to the Northeast corner of said tract of land described in Warranty Deed filed in Deed Book 217 at page 32, said point also being on the West line of a tract of land deeded to the City of Broken Bow for alley purposes as described in Warranty Deed filed for record May 25, 1909 in Deed Book 25 at page 547 in the Office of the Custer County Register of Deeds; thence Southerly, on the West line of said tract of land deeded to the City of Broken Bow in Warranty Deed filed in Deed Book 25 at page 547, a distance of 21.08 feet to a point being 50.00 feet South of the South line of the Burlington Northern Santa Fe Railroad right-of-way; thence leaving the West line of said tract of land deeded to the City of Broken Bow in Warranty Deed filed in Deed Book 25 at page 547, Westerly, parallel with the South line of the Burlington Northern Santa Fe Railroad right-of-way, a distance of 110.66 feet to the place of beginning.

LEGAL DESCRIPTION FOR TRACT 3

A tract of land being part of Block Twenty-eight (28), Original Town of Broken Bow, Custer County, Nebraska, more particularly described as follows: Referring to the Southeast corner of Block 28, Original Town of Broken Bow, Custer County, Nebraska; thence Northerly, on the East line of said Block 28, a distance of 108.0 feet to the Southeast corner of a tract of land as described in Warranty Deed filed for record April 13, 2006 in Deed Book 217 at page 32 in the Office of the Custer County Register of Deeds; thence continuing Northerly, on the East line of said Block 28, a distance of 20.50 feet to the ACTUAL PLACE OF BEGINNING; thence continuing Northerly, on the East line of said Block 28, a distance of 61.57 feet to the Northeast corner of said tract of land described in Warranty Deed filed in Deed Book 217 at page 32; thence Westerly, on the North line of said tract of land described in Warranty Deed filed in Deed Book 217 at page 32, a distance of 110.81 feet to the Northwest corner of said tract of land described in Warranty Deed filed in Deed Book 217 at page 32, said point also being on the East line of a tract of land deeded to the City of Broken Bow for alley purposes in Warranty Deed filed for record May 25, 1909 in Deed Book 25 at page 547 in the Office of the Custer County Register of Deeds; thence Southerly, on the East line of said tract of land deeded to the City of Broken Bow in Warranty Deed filed in Deed Book 25 at page 547, a distance of 81.03 feet to the Southwest corner of said tract of land described in Warranty Deed filed in Deed Book 217 at page 32; thence Northeasterly a distance of 113.10 feet to the place of beginning.

LEGAL DESCRIPTION FOR TRACT 4

A tract of land being part of Block Twenty-eight (28), Original Town of Broken Bow, Custer County, Nebraska, more particularly described as follows: Referring to the Southeast corner of Block 28, Original Town of Broken Bow, Custer County, Nebraska; thence Northerly, on the East line of said Block 28, a distance of 108.0 feet to the ACTUAL PLACE OF BEGINNING, said place of beginning being the Southeast corner of a tract of land as described in Warranty Deed filed for record April 13, 2006 in Deed Book 217 at page 32 in the Office of the Custer County Register of Deeds; thence continuing Northerly, on the East line of said Block 28, a distance of 20.50 feet; thence leaving the East line of said Block 28, Southwesterly a distance of 113.10 feet to the Southwest corner of said tract of land described in Warranty Deed filed in Deed Book 2017 at page 32; thence Easterly, on the South line of said tract of land described in Warranty Deed filed in Deed Book 2017 at page 32, a distance of 111.35 feet to the place of beginning.

ACKNOWLEDGEMENTS

The foregoing Administrative Lot Split being part of Block Twenty-eight (28), Original Town of Broken Bow, Custer County, Nebraska as shown on the above plat is created with the free consent and in accordance with the desires of James L. Girardin, who is the sole owner and proprietor of the land included therein. Dated this \_\_\_\_ day of \_\_\_\_\_, 2018

James L. Girardin

State of Nebraska  
County of Custer

The foregoing instrument was acknowledged before me this \_\_\_\_ day of \_\_\_\_\_, 2018, by James L. Girardin.

(SEAL)

Notary Public

My commission expires \_\_\_\_\_.

APPROVAL OF THE BROKEN BOW, NEBRASKA, PLANNING COMMISSION

The undersigned Chairperson or Member of the Broken Bow, Nebraska, Planning Commission does hereby certify that the foregoing Administrative Lot Split was submitted to the Broken Bow Planning Commission on the \_\_\_\_ day of \_\_\_\_\_, 2018, and was approved on that date by a majority vote of the members of said planning commission.

Chairperson or Member

Printed Name and Title

APPROVAL OF THE BROKEN BOW, NEBRASKA, CITY COUNCIL

The undersigned, Cecil Burt, Mayor of the City of Broken Bow, Nebraska, does hereby certify that the foregoing Administrative Lot Split was submitted to the Broken Bow City Council on the \_\_\_\_ day of \_\_\_\_\_, 2018, and was approved on that date by a majority vote of the members of said city council.

Cecil Burt, Mayor

State of Nebraska  
County of Custer

The foregoing instrument was acknowledged before me this \_\_\_\_ day of \_\_\_\_\_, 2018, by Cecil Burt, Mayor of the City of Broken Bow, Nebraska.

(SEAL)

Notary Public

My commission expires \_\_\_\_\_.

CUSTER COUNTY, NEBRASKA, REGISTER OF DEEDS

This is to certify that the foregoing Administrative Lot Split has been accepted and filed for record in the Office of the Custer County Register of Deeds this \_\_\_\_ day of \_\_\_\_\_, 2018, in Book \_\_\_\_ on page \_\_\_\_\_. (Slide No. \_\_\_\_\_)

Connie Carroll,  
Custer County Register of Deeds

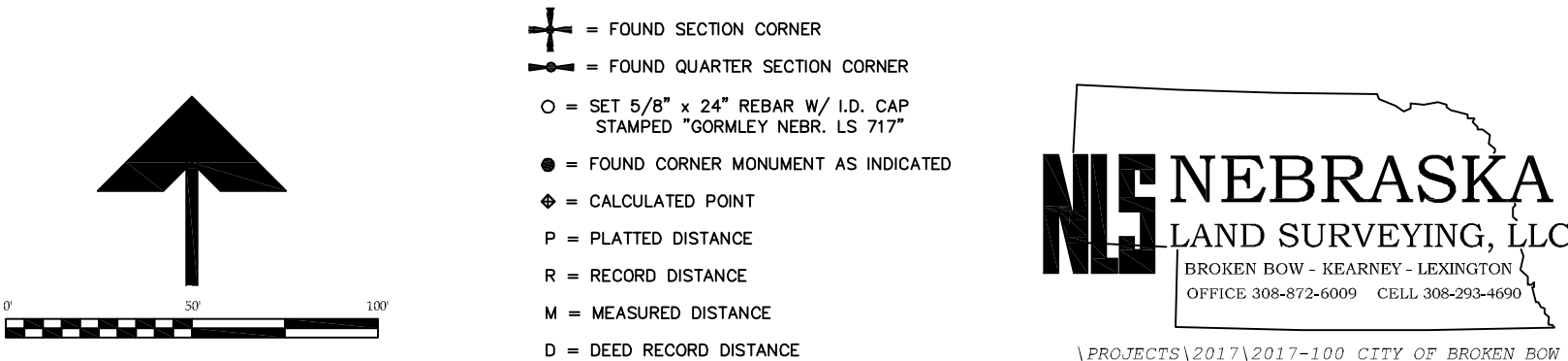
SURVEYOR'S CERTIFICATE

I do hereby certify that, under my personal supervision, this plat was prepared from an actual survey completed on the 10th day of January, 2018, and is true and correct to the best of my knowledge.

(SEAL)

Nebraska Land Surveying, LLC

Jay D. Gormley, Manager  
Nebraska Registered Land Surveyor No. 717



**Year Ending: December 2017**

[illegible]

**Six-Year Period Ending: 2024**

Sheet 1 of 1

NBCS Form 9, Jul 96

## Board of Public Roads Classifications and Standards

Sheet 1 of 1

[illegible]



Board of Public Roads Classifications and Standards  
**Form 7 One- and Six-Year Plan**  
**Highway or Street Improvement Project**

County:	City: Broken Bow, M-172	Village:																		
Location Description: Memorial Drive from North 5 <sup>th</sup> Ave. east to the city limits.																				
Existing Surface Type and Structures: (Such as dirt, gravel, asphalt, concrete, culvert, or bridge) Asphalt, concrete curb and gutter.																				
Average Daily Traffic: 2015 = 1,430, 2025 = 1,875		Classification Type: (As shown on Functional Classification Map) Local																		
<b>PROPOSED IMPROVEMENT</b>																				
Design Standard Number: Municipal	Surfacing	Thickness: 9" Width: 36'																		
<table style="width: 100%; border: none;"> <tr> <td><input checked="" type="checkbox"/> Grading</td> <td><input checked="" type="checkbox"/> Concrete</td> <td><input type="checkbox"/> Right of Way</td> <td><input type="checkbox"/> Lighting</td> </tr> <tr> <td><input type="checkbox"/> Aggregate</td> <td><input checked="" type="checkbox"/> Curb &amp; Gutter</td> <td><input type="checkbox"/> Utility Adjustments</td> <td><input type="checkbox"/> .....</td> </tr> <tr> <td><input type="checkbox"/> Armor Coat</td> <td><input checked="" type="checkbox"/> Drainage Structures</td> <td><input type="checkbox"/> Fencing</td> <td><input type="checkbox"/> .....</td> </tr> <tr> <td><input type="checkbox"/> Asphalt</td> <td><input type="checkbox"/> Erosion Control</td> <td><input checked="" type="checkbox"/> Sidewalks</td> <td><input type="checkbox"/> .....</td> </tr> </table>			<input checked="" type="checkbox"/> Grading	<input checked="" type="checkbox"/> Concrete	<input type="checkbox"/> Right of Way	<input type="checkbox"/> Lighting	<input type="checkbox"/> Aggregate	<input checked="" type="checkbox"/> Curb & Gutter	<input type="checkbox"/> Utility Adjustments	<input type="checkbox"/> .....	<input type="checkbox"/> Armor Coat	<input checked="" type="checkbox"/> Drainage Structures	<input type="checkbox"/> Fencing	<input type="checkbox"/> .....	<input type="checkbox"/> Asphalt	<input type="checkbox"/> Erosion Control	<input checked="" type="checkbox"/> Sidewalks	<input type="checkbox"/> .....		
<input checked="" type="checkbox"/> Grading	<input checked="" type="checkbox"/> Concrete	<input type="checkbox"/> Right of Way	<input type="checkbox"/> Lighting																	
<input type="checkbox"/> Aggregate	<input checked="" type="checkbox"/> Curb & Gutter	<input type="checkbox"/> Utility Adjustments	<input type="checkbox"/> .....																	
<input type="checkbox"/> Armor Coat	<input checked="" type="checkbox"/> Drainage Structures	<input type="checkbox"/> Fencing	<input type="checkbox"/> .....																	
<input type="checkbox"/> Asphalt	<input type="checkbox"/> Erosion Control	<input checked="" type="checkbox"/> Sidewalks	<input type="checkbox"/> .....																	
<b>Bridge to Remain in Place</b>	Roadway Width:	Length: Type:																		
<b>New Bridge</b>	Roadway Width:	Length: Type:																		
<b>Box Culvert</b>	Span: Rise: Length: Type:																			
<b>Culvert</b>	Diameter: Length: Type:																			
<b>Bridges and Culverts Sized</b>	<input type="checkbox"/> Yes <input type="checkbox"/> N/A <input type="checkbox"/> Hydraulic Analysis Pending																			
Other Construction Features: New Street Construction, removal and replacement of surface and drainage structures.																				
<table border="1" style="width: 100%; border-collapse: collapse;"> <tr> <th style="width: 15%;">ESTIMATED COST (In Thousands) ★ OPTIONAL</th> <th style="width: 15%;">★ COUNTY</th> <th style="width: 15%;">★ CITY</th> <th style="width: 15%;">★ STATE</th> <th style="width: 15%;">★ FEDERAL</th> <th style="width: 15%;">★ OTHER</th> <th style="width: 15%;">TOTAL</th> </tr> <tr> <td></td> <td></td> <td>1,000,000.00</td> <td></td> <td></td> <td></td> <td>1,000,000.00</td> </tr> </table>							ESTIMATED COST (In Thousands) ★ OPTIONAL	★ COUNTY	★ CITY	★ STATE	★ FEDERAL	★ OTHER	TOTAL			1,000,000.00				1,000,000.00
ESTIMATED COST (In Thousands) ★ OPTIONAL	★ COUNTY	★ CITY	★ STATE	★ FEDERAL	★ OTHER	TOTAL														
		1,000,000.00				1,000,000.00														
Project Length: (Nearest Tenth, State Unit of Measure) 0.2 mile			Project No.: M-172(106)																	
Signature: <i>Wesley Clark</i>		Title: Street Supt. S-1385			Date: January 2018															


Board of Public Roads Classifications and Standards  
**Form 7 One- and Six-Year Plan**  
**Highway or Street Improvement Project**

County:	City: Broken Bow, M-172	Village:																
Location Description: South 19 <sup>th</sup> Ave., extend concrete pavement approx. 475' to the south.																		
Existing Surface Type and Structures: (Such as dirt, gravel, asphalt, concrete, culvert, or bridge) Gravel, dirt.																		
Average Daily Traffic: 2016 = 100, 2026 = 200		Classification Type: (As shown on Functional Classification Map) Local																
<b>PROPOSED IMPROVEMENT</b>																		
Design Standard Number: Municipal	Surfacing	Thickness: 8" Width: 32'																
<table style="width: 100%; border: none;"> <tr> <td><input checked="" type="checkbox"/> Grading</td> <td><input checked="" type="checkbox"/> Concrete</td> <td><input type="checkbox"/> Right of Way</td> <td><input type="checkbox"/> Lighting</td> </tr> <tr> <td><input type="checkbox"/> Aggregate</td> <td><input checked="" type="checkbox"/> Curb &amp; Gutter</td> <td><input type="checkbox"/> Utility Adjustments</td> <td><input type="checkbox"/> .....</td> </tr> <tr> <td><input type="checkbox"/> Armor Coat</td> <td><input checked="" type="checkbox"/> Drainage Structures</td> <td><input type="checkbox"/> Fencing</td> <td><input type="checkbox"/> .....</td> </tr> <tr> <td><input type="checkbox"/> Asphalt</td> <td><input type="checkbox"/> Erosion Control</td> <td><input type="checkbox"/> Sidewalks</td> <td><input type="checkbox"/> .....</td> </tr> </table>			<input checked="" type="checkbox"/> Grading	<input checked="" type="checkbox"/> Concrete	<input type="checkbox"/> Right of Way	<input type="checkbox"/> Lighting	<input type="checkbox"/> Aggregate	<input checked="" type="checkbox"/> Curb & Gutter	<input type="checkbox"/> Utility Adjustments	<input type="checkbox"/> .....	<input type="checkbox"/> Armor Coat	<input checked="" type="checkbox"/> Drainage Structures	<input type="checkbox"/> Fencing	<input type="checkbox"/> .....	<input type="checkbox"/> Asphalt	<input type="checkbox"/> Erosion Control	<input type="checkbox"/> Sidewalks	<input type="checkbox"/> .....
<input checked="" type="checkbox"/> Grading	<input checked="" type="checkbox"/> Concrete	<input type="checkbox"/> Right of Way	<input type="checkbox"/> Lighting															
<input type="checkbox"/> Aggregate	<input checked="" type="checkbox"/> Curb & Gutter	<input type="checkbox"/> Utility Adjustments	<input type="checkbox"/> .....															
<input type="checkbox"/> Armor Coat	<input checked="" type="checkbox"/> Drainage Structures	<input type="checkbox"/> Fencing	<input type="checkbox"/> .....															
<input type="checkbox"/> Asphalt	<input type="checkbox"/> Erosion Control	<input type="checkbox"/> Sidewalks	<input type="checkbox"/> .....															
<b>Bridge to Remain in Place</b>	Roadway Width:	Length: Type:																
<b>New Bridge</b>	Roadway Width:	Length: Type:																
<b>Box Culvert</b>	Span: Rise: Length: Type:																	
<b>Culvert</b>	Diameter: Length: Type:																	
<b>Bridges and Culverts Sized</b>	<input type="checkbox"/> Yes <input type="checkbox"/> N/A <input type="checkbox"/> Hydraulic Analysis Pending																	
Other Construction Features: New Street Construction, replace current surface with concrete pavement.																		
<b>ESTIMATED COST</b> (in Thousands) ★ OPTIONAL	★ COUNTY	★ CITY 400,000.00	★ STATE	★ FEDERAL	★ OTHER	<b>TOTAL</b> 400,000.00												
Project Length: (Nearest Tenth, State Unit of Measure) 0.2 mile				Project No.: M-172(112)														
Signature: <i>Mona Clark</i>		Title: Street Supt. S-1385		Date: January 2018														

Board of Public Roads Classifications and Standards  
**Form 7 One- and Six-Year Plan**  
**Highway or Street Improvement Project**

County:	City: Broken Bow, M-172	Village:																		
Location Description: South 1 <sup>st</sup> Ave. from South G Street south to Pleasant Hill Lane.																				
Existing Surface Type and Structures: (Such as dirt, gravel, asphalt, concrete, culvert, or bridge) Concrete																				
Average Daily Traffic: 20 = _____, 20 = Unknown		Classification Type: (As shown on Functional Classification Map) Local																		
<b>PROPOSED IMPROVEMENT</b>																				
Design Standard Number: Municipal	Surfacing	Thickness: 8" Width: 40'																		
<table style="width: 100%; border: none;"> <tr> <td><input checked="" type="checkbox"/> Grading</td> <td><input checked="" type="checkbox"/> Concrete</td> <td><input type="checkbox"/> Right of Way</td> <td><input type="checkbox"/> Lighting</td> </tr> <tr> <td><input type="checkbox"/> Aggregate</td> <td><input checked="" type="checkbox"/> Curb &amp; Gutter</td> <td><input checked="" type="checkbox"/> Utility Adjustments</td> <td><input type="checkbox"/> .....</td> </tr> <tr> <td><input type="checkbox"/> Armor Coat</td> <td><input type="checkbox"/> Drainage Structures</td> <td><input type="checkbox"/> Fencing</td> <td><input type="checkbox"/> .....</td> </tr> <tr> <td><input type="checkbox"/> Asphalt</td> <td><input type="checkbox"/> Erosion Control</td> <td><input type="checkbox"/> Sidewalks</td> <td><input type="checkbox"/> .....</td> </tr> </table>			<input checked="" type="checkbox"/> Grading	<input checked="" type="checkbox"/> Concrete	<input type="checkbox"/> Right of Way	<input type="checkbox"/> Lighting	<input type="checkbox"/> Aggregate	<input checked="" type="checkbox"/> Curb & Gutter	<input checked="" type="checkbox"/> Utility Adjustments	<input type="checkbox"/> .....	<input type="checkbox"/> Armor Coat	<input type="checkbox"/> Drainage Structures	<input type="checkbox"/> Fencing	<input type="checkbox"/> .....	<input type="checkbox"/> Asphalt	<input type="checkbox"/> Erosion Control	<input type="checkbox"/> Sidewalks	<input type="checkbox"/> .....		
<input checked="" type="checkbox"/> Grading	<input checked="" type="checkbox"/> Concrete	<input type="checkbox"/> Right of Way	<input type="checkbox"/> Lighting																	
<input type="checkbox"/> Aggregate	<input checked="" type="checkbox"/> Curb & Gutter	<input checked="" type="checkbox"/> Utility Adjustments	<input type="checkbox"/> .....																	
<input type="checkbox"/> Armor Coat	<input type="checkbox"/> Drainage Structures	<input type="checkbox"/> Fencing	<input type="checkbox"/> .....																	
<input type="checkbox"/> Asphalt	<input type="checkbox"/> Erosion Control	<input type="checkbox"/> Sidewalks	<input type="checkbox"/> .....																	
<b>Bridge to Remain in Place</b>	Roadway Width:	Length: Type:																		
<b>New Bridge</b>	Roadway Width:	Length: Type:																		
<b>Box Culvert</b>	Span: Rise: Length: Type:																			
<b>Culvert</b>	Diameter: Length: Type:																			
<b>Bridges and Culverts Sized</b>	<input type="checkbox"/> Yes <input type="checkbox"/> N/A <input type="checkbox"/> Hydraulic Analysis Pending																			
Other Construction Features: Remove and replace existing paving surface with 8" concrete pavement.																				
<table border="1" style="width: 100%; border-collapse: collapse;"> <tr> <th style="width: 15%;">ESTIMATED COST (in Thousands)</th> <th style="width: 15%;">★ COUNTY</th> <th style="width: 15%;">★ CITY</th> <th style="width: 15%;">★ STATE</th> <th style="width: 15%;">★ FEDERAL</th> <th style="width: 15%;">★ OTHER</th> <th style="width: 15%;">TOTAL</th> </tr> <tr> <td>★ OPTIONAL</td> <td></td> <td>300,000.00</td> <td></td> <td></td> <td></td> <td>300,000.00</td> </tr> </table>							ESTIMATED COST (in Thousands)	★ COUNTY	★ CITY	★ STATE	★ FEDERAL	★ OTHER	TOTAL	★ OPTIONAL		300,000.00				300,000.00
ESTIMATED COST (in Thousands)	★ COUNTY	★ CITY	★ STATE	★ FEDERAL	★ OTHER	TOTAL														
★ OPTIONAL		300,000.00				300,000.00														
Project Length: (Nearest Tenth, State Unit of Measure) 0.2 mile				Project No.: M-172(113)																
Signature: <i>Monte Clark</i>		Title: Street Supt. S-1385			Date: January 2018															

**Board of Public Roads Classifications and Standards**  
**Form 7 One- and Six-Year Plan**  
**Highway or Street Improvement Project**

County:	City: Broken Bow, M-172	Village:																
Location Description: South 9 <sup>th</sup> Ave. from South B Street south to approximately 150' north of South D Street, South C Street from 10 <sup>th</sup> Ave. east to South 8 <sup>th</sup> Ave., then south from C Street to South D Street.																		
Existing Surface Type and Structures: (Such as dirt, gravel, asphalt, concrete, culvert, or bridge) Asphalt, brick and concrete.																		
Average Daily Traffic: 2015 = 1,550, 2025 = 1,850		Classification Type: (As shown on Functional Classification Map) Local																
<b>PROPOSED IMPROVEMENT</b>																		
Design Standard Number: Municipal	Surfacing	Thickness: 8" Width: 50'																
<table style="width: 100%; border: none;"> <tr> <td><input checked="" type="checkbox"/> Grading</td> <td><input checked="" type="checkbox"/> Concrete</td> <td><input type="checkbox"/> Right of Way</td> <td><input checked="" type="checkbox"/> Lighting</td> </tr> <tr> <td><input type="checkbox"/> Aggregate</td> <td><input checked="" type="checkbox"/> Curb &amp; Gutter</td> <td><input checked="" type="checkbox"/> Utility Adjustments</td> <td><input type="checkbox"/> .....</td> </tr> <tr> <td><input type="checkbox"/> Armor Coat</td> <td><input checked="" type="checkbox"/> Drainage Structures</td> <td><input type="checkbox"/> Fencing</td> <td><input type="checkbox"/> .....</td> </tr> <tr> <td><input type="checkbox"/> Asphalt</td> <td><input type="checkbox"/> Erosion Control</td> <td><input checked="" type="checkbox"/> Sidewalks</td> <td><input type="checkbox"/> .....</td> </tr> </table>			<input checked="" type="checkbox"/> Grading	<input checked="" type="checkbox"/> Concrete	<input type="checkbox"/> Right of Way	<input checked="" type="checkbox"/> Lighting	<input type="checkbox"/> Aggregate	<input checked="" type="checkbox"/> Curb & Gutter	<input checked="" type="checkbox"/> Utility Adjustments	<input type="checkbox"/> .....	<input type="checkbox"/> Armor Coat	<input checked="" type="checkbox"/> Drainage Structures	<input type="checkbox"/> Fencing	<input type="checkbox"/> .....	<input type="checkbox"/> Asphalt	<input type="checkbox"/> Erosion Control	<input checked="" type="checkbox"/> Sidewalks	<input type="checkbox"/> .....
<input checked="" type="checkbox"/> Grading	<input checked="" type="checkbox"/> Concrete	<input type="checkbox"/> Right of Way	<input checked="" type="checkbox"/> Lighting															
<input type="checkbox"/> Aggregate	<input checked="" type="checkbox"/> Curb & Gutter	<input checked="" type="checkbox"/> Utility Adjustments	<input type="checkbox"/> .....															
<input type="checkbox"/> Armor Coat	<input checked="" type="checkbox"/> Drainage Structures	<input type="checkbox"/> Fencing	<input type="checkbox"/> .....															
<input type="checkbox"/> Asphalt	<input type="checkbox"/> Erosion Control	<input checked="" type="checkbox"/> Sidewalks	<input type="checkbox"/> .....															
<b>Bridge to Remain in Place</b>	Roadway Width:	Length: Type:																
<b>New Bridge</b>	Roadway Width:	Length: Type:																
<b>Box Culvert</b>	Span: Rise:	Length: Type:																
<b>Culvert</b>	Diameter:	Length: Type:																
<b>Bridges and Culverts Sized</b>	<input type="checkbox"/> Yes <input type="checkbox"/> N/A <input type="checkbox"/> Hydraulic Analysis Pending																	
Other Construction Features: New Street Construction, removal and replacement of infrastructure and surface.																		
ESTIMATED COST (in Thousands) ★ OPTIONAL	★ COUNTY	★ CITY	★ STATE	★ FEDERAL	★ OTHER	TOTAL												
		1,000,000.00				1,000,000.00												
Project Length: (Nearest Tenth, State Unit of Measure) 0.3 mile			Project No.: M-172(108)															
Signature: 		Title: Street Supt. S-1385		Date: January 2018														

**Board of Public Roads Classifications and Standards**  
**Form 7 One- and Six-Year Plan**  
**Highway or Street Improvement Project**

County:	City: Broken Bow, M-172	Village:																		
Location Description: South 10 <sup>th</sup> Ave. from alley south to South F Street, then east to South 8 <sup>th</sup> Ave., South 9 <sup>th</sup> Ave. from Hwy 2 south to South f Street.																				
Existing Surface Type and Structures: (Such as dirt, gravel, asphalt, concrete, culvert, or bridge) Asphalt and concrete.																				
Average Daily Traffic: 2016 = 1,800, 2026 = 2,050		Classification Type: (As shown on Functional Classification Map) Local																		
<b>PROPOSED IMPROVEMENT</b>																				
Design Standard Number: Municipal	Surfacing	Thickness: 8" Width: 50'																		
<table style="width: 100%; border: none;"> <tr> <td><input checked="" type="checkbox"/> Grading</td> <td><input checked="" type="checkbox"/> Concrete</td> <td><input type="checkbox"/> Right of Way</td> <td><input checked="" type="checkbox"/> Lighting</td> </tr> <tr> <td><input type="checkbox"/> Aggregate</td> <td><input checked="" type="checkbox"/> Curb &amp; Gutter</td> <td><input checked="" type="checkbox"/> Utility Adjustments</td> <td><input type="checkbox"/> .....</td> </tr> <tr> <td><input type="checkbox"/> Armor Coat</td> <td><input checked="" type="checkbox"/> Drainage Structures</td> <td><input type="checkbox"/> Fencing</td> <td><input type="checkbox"/> .....</td> </tr> <tr> <td><input type="checkbox"/> Asphalt</td> <td><input type="checkbox"/> Erosion Control</td> <td><input checked="" type="checkbox"/> Sidewalks</td> <td><input type="checkbox"/> .....</td> </tr> </table>			<input checked="" type="checkbox"/> Grading	<input checked="" type="checkbox"/> Concrete	<input type="checkbox"/> Right of Way	<input checked="" type="checkbox"/> Lighting	<input type="checkbox"/> Aggregate	<input checked="" type="checkbox"/> Curb & Gutter	<input checked="" type="checkbox"/> Utility Adjustments	<input type="checkbox"/> .....	<input type="checkbox"/> Armor Coat	<input checked="" type="checkbox"/> Drainage Structures	<input type="checkbox"/> Fencing	<input type="checkbox"/> .....	<input type="checkbox"/> Asphalt	<input type="checkbox"/> Erosion Control	<input checked="" type="checkbox"/> Sidewalks	<input type="checkbox"/> .....		
<input checked="" type="checkbox"/> Grading	<input checked="" type="checkbox"/> Concrete	<input type="checkbox"/> Right of Way	<input checked="" type="checkbox"/> Lighting																	
<input type="checkbox"/> Aggregate	<input checked="" type="checkbox"/> Curb & Gutter	<input checked="" type="checkbox"/> Utility Adjustments	<input type="checkbox"/> .....																	
<input type="checkbox"/> Armor Coat	<input checked="" type="checkbox"/> Drainage Structures	<input type="checkbox"/> Fencing	<input type="checkbox"/> .....																	
<input type="checkbox"/> Asphalt	<input type="checkbox"/> Erosion Control	<input checked="" type="checkbox"/> Sidewalks	<input type="checkbox"/> .....																	
<b>Bridge to Remain in Place</b>	Roadway Width:	Length: Type:																		
<b>New Bridge</b>	Roadway Width:	Length: Type:																		
<b>Box Culvert</b>	Span: Rise:	Length: Type:																		
<b>Culvert</b>	Diameter:	Length: Type:																		
<b>Bridges and Culverts Sized</b>	<input type="checkbox"/> Yes <input type="checkbox"/> N/A <input type="checkbox"/> Hydraulic Analysis Pending																			
Other Construction Features: New Street Construction, removal and replacement of infrastructure and road surface.																				
<table border="1" style="width: 100%; border-collapse: collapse;"> <tr> <th style="width: 15%;">ESTIMATED COST (In Thousands)</th> <th style="width: 15%;">★ COUNTY</th> <th style="width: 15%;">★ CITY</th> <th style="width: 15%;">★ STATE</th> <th style="width: 15%;">★ FEDERAL</th> <th style="width: 15%;">★ OTHER</th> <th style="width: 15%;">TOTAL</th> </tr> <tr> <td>★ OPTIONAL</td> <td></td> <td>750,000.00</td> <td></td> <td></td> <td></td> <td>750,000.00</td> </tr> </table>							ESTIMATED COST (In Thousands)	★ COUNTY	★ CITY	★ STATE	★ FEDERAL	★ OTHER	TOTAL	★ OPTIONAL		750,000.00				750,000.00
ESTIMATED COST (In Thousands)	★ COUNTY	★ CITY	★ STATE	★ FEDERAL	★ OTHER	TOTAL														
★ OPTIONAL		750,000.00				750,000.00														
Project Length: (Nearest Tenth, State Unit of Measure) 0.3 mile			Project No.: M-172(109)																	
Signature: <i>Monte Clark</i>			Title: Street Supt. S-1385		Date: January 2018															

**Board of Public Roads Classifications and Standards**  
**Form 7 One- and Six-Year Plan**  
**Highway or Street Improvement Project**

County:	City: Broken Bow, M-172	Village:																
Location Description: South D Street from South 8 <sup>th</sup> Ave. east to South 7 <sup>th</sup> Ave., then south on 7 <sup>th</sup> Ave. to South f Street, then west on F Street to South 8 <sup>th</sup> Ave.																		
Existing Surface Type and Structures: (Such as dirt, gravel, asphalt, concrete, culvert, or bridge) Asphalt and concrete.																		
Average Daily Traffic: 2016 = 1,800, 2026 = 2,050		Classification Type: (As shown on Functional Classification Map) Local																
<b>PROPOSED IMPROVEMENT</b>																		
Design Standard Number: Municipal	Surfacing	Thickness: 8" Width: 50'																
<table style="width: 100%; border: none;"> <tr> <td><input checked="" type="checkbox"/> Grading</td> <td><input checked="" type="checkbox"/> Concrete</td> <td><input type="checkbox"/> Right of Way</td> <td><input checked="" type="checkbox"/> Lighting</td> </tr> <tr> <td><input type="checkbox"/> Aggregate</td> <td><input checked="" type="checkbox"/> Curb &amp; Gutter</td> <td><input checked="" type="checkbox"/> Utility Adjustments</td> <td><input type="checkbox"/> .....</td> </tr> <tr> <td><input type="checkbox"/> Armor Coat</td> <td><input checked="" type="checkbox"/> Drainage Structures</td> <td><input type="checkbox"/> Fencing</td> <td><input type="checkbox"/> .....</td> </tr> <tr> <td><input type="checkbox"/> Asphalt</td> <td><input type="checkbox"/> Erosion Control</td> <td><input checked="" type="checkbox"/> Sidewalks</td> <td><input type="checkbox"/> .....</td> </tr> </table>			<input checked="" type="checkbox"/> Grading	<input checked="" type="checkbox"/> Concrete	<input type="checkbox"/> Right of Way	<input checked="" type="checkbox"/> Lighting	<input type="checkbox"/> Aggregate	<input checked="" type="checkbox"/> Curb & Gutter	<input checked="" type="checkbox"/> Utility Adjustments	<input type="checkbox"/> .....	<input type="checkbox"/> Armor Coat	<input checked="" type="checkbox"/> Drainage Structures	<input type="checkbox"/> Fencing	<input type="checkbox"/> .....	<input type="checkbox"/> Asphalt	<input type="checkbox"/> Erosion Control	<input checked="" type="checkbox"/> Sidewalks	<input type="checkbox"/> .....
<input checked="" type="checkbox"/> Grading	<input checked="" type="checkbox"/> Concrete	<input type="checkbox"/> Right of Way	<input checked="" type="checkbox"/> Lighting															
<input type="checkbox"/> Aggregate	<input checked="" type="checkbox"/> Curb & Gutter	<input checked="" type="checkbox"/> Utility Adjustments	<input type="checkbox"/> .....															
<input type="checkbox"/> Armor Coat	<input checked="" type="checkbox"/> Drainage Structures	<input type="checkbox"/> Fencing	<input type="checkbox"/> .....															
<input type="checkbox"/> Asphalt	<input type="checkbox"/> Erosion Control	<input checked="" type="checkbox"/> Sidewalks	<input type="checkbox"/> .....															
<b>Bridge to Remain in Place</b> Roadway Width: Length: Type:																		
<b>New Bridge</b> Roadway Width: Length: Type:																		
<b>Box Culvert</b> Span: Rise: Length: Type:																		
<b>Culvert</b> Diameter: Length: Type:																		
<b>Bridges and Culverts Sized</b> <input type="checkbox"/> Yes <input type="checkbox"/> N/A <input type="checkbox"/> Hydraulic Analysis Pending																		
Other Construction Features: New Street Construction, removal and replacement of infrastructure and road surface.																		
<table border="1" style="width: 100%; border-collapse: collapse;"> <tr> <th style="width: 15%;">ESTIMATED COST (In Thousands)</th> <th style="width: 15%;">★ COUNTY</th> <th style="width: 15%;">★ CITY</th> <th style="width: 15%;">★ STATE</th> <th style="width: 15%;">★ FEDERAL</th> <th style="width: 15%;">★ OTHER</th> <th style="width: 15%;">TOTAL</th> </tr> <tr> <td>★ OPTIONAL</td> <td></td> <td>750,000.00</td> <td></td> <td></td> <td></td> <td>750,000.00</td> </tr> </table>			ESTIMATED COST (In Thousands)	★ COUNTY	★ CITY	★ STATE	★ FEDERAL	★ OTHER	TOTAL	★ OPTIONAL		750,000.00				750,000.00		
ESTIMATED COST (In Thousands)	★ COUNTY	★ CITY	★ STATE	★ FEDERAL	★ OTHER	TOTAL												
★ OPTIONAL		750,000.00				750,000.00												
Project Length: (Nearest Tenth, State Unit of Measure) 0.3 mile		Project No.: M-172(110)																
Signature:		Title: Street Supt. S-1385 Date: January 2018																

**Board of Public Roads Classifications and Standards**  
**Form 7 One- and Six-Year Plan**  
**Highway or Street Improvement Project**

County:	City: Broken Bow, M-172	Village:																
Location Description: South D Street west from South 10 <sup>th</sup> Ave., then south on 11 <sup>th</sup> Ave. to South F Street.																		
Existing Surface Type and Structures: (Such as dirt, gravel, asphalt, concrete, culvert, or bridge) Asphalt and concrete.																		
Average Daily Traffic: 2016 = 1,800, 2026 = 2,050		Classification Type: (As shown on Functional Classification Map) Local																
<b>PROPOSED IMPROVEMENT</b>																		
Design Standard Number: Municipal	<b>Surfacing</b>	Thickness: 8" Width: 50'																
<table style="width: 100%; border: none;"> <tr> <td><input checked="" type="checkbox"/> Grading</td> <td><input checked="" type="checkbox"/> Concrete</td> <td><input type="checkbox"/> Right of Way</td> <td><input checked="" type="checkbox"/> Lighting</td> </tr> <tr> <td><input type="checkbox"/> Aggregate</td> <td><input checked="" type="checkbox"/> Curb &amp; Gutter</td> <td><input checked="" type="checkbox"/> Utility Adjustments</td> <td><input type="checkbox"/> .....</td> </tr> <tr> <td><input type="checkbox"/> Armor Coat</td> <td><input checked="" type="checkbox"/> Drainage Structures</td> <td><input type="checkbox"/> Fencing</td> <td><input type="checkbox"/> .....</td> </tr> <tr> <td><input type="checkbox"/> Asphalt</td> <td><input type="checkbox"/> Erosion Control</td> <td><input checked="" type="checkbox"/> Sidewalks</td> <td><input type="checkbox"/> .....</td> </tr> </table>			<input checked="" type="checkbox"/> Grading	<input checked="" type="checkbox"/> Concrete	<input type="checkbox"/> Right of Way	<input checked="" type="checkbox"/> Lighting	<input type="checkbox"/> Aggregate	<input checked="" type="checkbox"/> Curb & Gutter	<input checked="" type="checkbox"/> Utility Adjustments	<input type="checkbox"/> .....	<input type="checkbox"/> Armor Coat	<input checked="" type="checkbox"/> Drainage Structures	<input type="checkbox"/> Fencing	<input type="checkbox"/> .....	<input type="checkbox"/> Asphalt	<input type="checkbox"/> Erosion Control	<input checked="" type="checkbox"/> Sidewalks	<input type="checkbox"/> .....
<input checked="" type="checkbox"/> Grading	<input checked="" type="checkbox"/> Concrete	<input type="checkbox"/> Right of Way	<input checked="" type="checkbox"/> Lighting															
<input type="checkbox"/> Aggregate	<input checked="" type="checkbox"/> Curb & Gutter	<input checked="" type="checkbox"/> Utility Adjustments	<input type="checkbox"/> .....															
<input type="checkbox"/> Armor Coat	<input checked="" type="checkbox"/> Drainage Structures	<input type="checkbox"/> Fencing	<input type="checkbox"/> .....															
<input type="checkbox"/> Asphalt	<input type="checkbox"/> Erosion Control	<input checked="" type="checkbox"/> Sidewalks	<input type="checkbox"/> .....															
<b>Bridge to Remain in Place</b>	Roadway Width:	Length: Type:																
<b>New Bridge</b>	Roadway Width:	Length: Type:																
<b>Box Culvert</b>	Span: Rise: Length:	Type:																
<b>Culvert</b>	Diameter: Length:	Type:																
<b>Bridges and Culverts Sized</b>	<input type="checkbox"/> Yes <input type="checkbox"/> N/A <input type="checkbox"/> Hydraulic Analysis Pending																	
Other Construction Features: New Street Construction, removal and replacement of infrastructure and road surface.																		
<b>ESTIMATED COST</b> (in Thousands) ★ OPTIONAL	★ COUNTY	★ CITY	★ STATE	★ FEDERAL	★ OTHER	TOTAL												
		500,000.00				500,000.00												
Project Length: (Nearest Tenth, State Unit of Measure) 0.2 mile			Project No.: M-172(111)															
Signature: <i>Monte Clark</i>		Title: Street Supt. S-1385			Date: January 2018													

Board of Public Roads Classifications and Standards  
**Form 7 One- and Six-Year Plan**  
**Highway or Street Improvement Project**

County:	City: Broken Bow, M-172	Village:																
Location Description: North 5 <sup>th</sup> Ave. from Memorial Drive north to city limits.																		
Existing Surface Type and Structures: (Such as dirt, gravel, asphalt, concrete, culvert, or bridge) Asphalt																		
Average Daily Traffic: 2016 = 350, 2026 = 475		Classification Type: (As shown on Functional Classification Map) Local																
<b>PROPOSED IMPROVEMENT</b>																		
Design Standard Number: Municipal	Surfacing	Thickness: 4" Width: 40'																
<table style="width: 100%; border: none;"> <tr> <td><input type="checkbox"/> Grading</td> <td><input type="checkbox"/> Concrete</td> <td><input type="checkbox"/> Right of Way</td> <td><input type="checkbox"/> Lighting</td> </tr> <tr> <td><input type="checkbox"/> Aggregate</td> <td><input type="checkbox"/> Curb &amp; Gutter</td> <td><input type="checkbox"/> Utility Adjustments</td> <td><input type="checkbox"/> .....</td> </tr> <tr> <td><input type="checkbox"/> Armor Coat</td> <td><input type="checkbox"/> Drainage Structures</td> <td><input type="checkbox"/> Fencing</td> <td><input type="checkbox"/> .....</td> </tr> <tr> <td><input checked="" type="checkbox"/> Asphalt</td> <td><input type="checkbox"/> Erosion Control</td> <td><input type="checkbox"/> Sidewalks</td> <td><input type="checkbox"/> .....</td> </tr> </table>			<input type="checkbox"/> Grading	<input type="checkbox"/> Concrete	<input type="checkbox"/> Right of Way	<input type="checkbox"/> Lighting	<input type="checkbox"/> Aggregate	<input type="checkbox"/> Curb & Gutter	<input type="checkbox"/> Utility Adjustments	<input type="checkbox"/> .....	<input type="checkbox"/> Armor Coat	<input type="checkbox"/> Drainage Structures	<input type="checkbox"/> Fencing	<input type="checkbox"/> .....	<input checked="" type="checkbox"/> Asphalt	<input type="checkbox"/> Erosion Control	<input type="checkbox"/> Sidewalks	<input type="checkbox"/> .....
<input type="checkbox"/> Grading	<input type="checkbox"/> Concrete	<input type="checkbox"/> Right of Way	<input type="checkbox"/> Lighting															
<input type="checkbox"/> Aggregate	<input type="checkbox"/> Curb & Gutter	<input type="checkbox"/> Utility Adjustments	<input type="checkbox"/> .....															
<input type="checkbox"/> Armor Coat	<input type="checkbox"/> Drainage Structures	<input type="checkbox"/> Fencing	<input type="checkbox"/> .....															
<input checked="" type="checkbox"/> Asphalt	<input type="checkbox"/> Erosion Control	<input type="checkbox"/> Sidewalks	<input type="checkbox"/> .....															
<b>Bridge to Remain in Place</b>	Roadway Width:	Length: Type:																
<b>New Bridge</b>	Roadway Width:	Length: Type:																
<b>Box Culvert</b>	Span: Rise: Length: Type:																	
<b>Culvert</b>	Diameter: Length: Type:																	
<b>Bridges and Culverts Sized</b>	<input type="checkbox"/> Yes <input type="checkbox"/> N/A <input type="checkbox"/> Hydraulic Analysis Pending																	
Other Construction Features: Milling and overlay.																		
ESTIMATED COST (in Thousands) ★ OPTIONAL	★ COUNTY	★ CITY 250,000.00	★ STATE	★ FEDERAL	★ OTHER	TOTAL 250,000.00												
Project Length: (Nearest Tenth, State Unit of Measure) 0.3 mile			Project No.: M-172(85)															
Signature: <i>Marye Clark</i>		Title: Street Supt. S-1385		Date: January 2018														



Board of Public Roads Classifications and Standards  
**Form 7 One- and Six-Year Plan**  
**Highway or Street Improvement Project**

County:	City: Broken Bow, M-172	Village:																
Location Description: North 15 <sup>th</sup> Ave. from North J Street to North L Street, North K Street from 14 <sup>th</sup> Ave. to North 15 <sup>th</sup> Ave.																		
Existing Surface Type and Structures: (Such as dirt, gravel, asphalt, concrete, culvert, or bridge) Gravel																		
Average Daily Traffic: 2016 = 120, 2026 = 150		Classification Type: (As shown on Functional Classification Map) Local																
<b>PROPOSED IMPROVEMENT</b>																		
Design Standard Number: Municipal	Surfacing	Thickness: 5" Width: 22'																
<table style="width: 100%; border: none;"> <tr> <td><input checked="" type="checkbox"/> Grading</td> <td><input type="checkbox"/> Concrete</td> <td><input type="checkbox"/> Right of Way</td> <td><input type="checkbox"/> Lighting</td> </tr> <tr> <td><input type="checkbox"/> Aggregate</td> <td><input type="checkbox"/> Curb &amp; Gutter</td> <td><input type="checkbox"/> Utility Adjustments</td> <td>.....</td> </tr> <tr> <td><input checked="" type="checkbox"/> Armor Coat</td> <td><input checked="" type="checkbox"/> Drainage Structures</td> <td><input type="checkbox"/> Fencing</td> <td>.....</td> </tr> <tr> <td><input checked="" type="checkbox"/> Asphalt</td> <td><input type="checkbox"/> Erosion Control</td> <td><input type="checkbox"/> Sidewalks</td> <td>.....</td> </tr> </table>			<input checked="" type="checkbox"/> Grading	<input type="checkbox"/> Concrete	<input type="checkbox"/> Right of Way	<input type="checkbox"/> Lighting	<input type="checkbox"/> Aggregate	<input type="checkbox"/> Curb & Gutter	<input type="checkbox"/> Utility Adjustments	.....	<input checked="" type="checkbox"/> Armor Coat	<input checked="" type="checkbox"/> Drainage Structures	<input type="checkbox"/> Fencing	.....	<input checked="" type="checkbox"/> Asphalt	<input type="checkbox"/> Erosion Control	<input type="checkbox"/> Sidewalks	.....
<input checked="" type="checkbox"/> Grading	<input type="checkbox"/> Concrete	<input type="checkbox"/> Right of Way	<input type="checkbox"/> Lighting															
<input type="checkbox"/> Aggregate	<input type="checkbox"/> Curb & Gutter	<input type="checkbox"/> Utility Adjustments	.....															
<input checked="" type="checkbox"/> Armor Coat	<input checked="" type="checkbox"/> Drainage Structures	<input type="checkbox"/> Fencing	.....															
<input checked="" type="checkbox"/> Asphalt	<input type="checkbox"/> Erosion Control	<input type="checkbox"/> Sidewalks	.....															
<b>Bridge to Remain in Place</b>	Roadway Width:	Length: Type:																
<b>New Bridge</b>	Roadway Width:	Length: Type:																
<b>Box Culvert</b>	Span: Rise: Length: Type:																	
<b>Culvert</b>	Diameter: Length: Type:																	
<b>Bridges and Culverts Sized</b>	<input type="checkbox"/> Yes <input type="checkbox"/> N/A <input type="checkbox"/> Hydraulic Analysis Pending																	
Other Construction Features: Subgrade prep, lay cold-mix asphalt and armor coat.																		
<b>ESTIMATED COST</b> (in Thousands) ★ OPTIONAL	★ COUNTY	★ CITY 65,000.00	★ STATE	★ FEDERAL	★ OTHER	TOTAL 65,000.00												
Project Length: (Nearest Tenth, State Unit of Measure) 0.2 mile				Project No.: M-172(84)														
Signature: <i>Marta Clark</i>		Title: Street Supt. S-1385		Date: January 2018														

**Board of Public Roads Classifications and Standards**  
**Form 7 One- and Six-Year Plan**  
**Highway or Street Improvement Project**

County:	City: Broken Bow, M-172	Village:																
Location Description: Drainage Ditch from North B Street to Memorial Drive, located between North 12 <sup>th</sup> Ave. and North 13 <sup>th</sup> Ave.																		
Existing Surface Type and Structures: (Such as dirt, gravel, asphalt, concrete, culvert, or bridge) Dirt																		
Average Daily Traffic: 20 = _____, 20 = _____		Classification Type: (As shown on Functional Classification Map)																
<b>PROPOSED IMPROVEMENT</b>																		
Design Standard Number: Municipal	Surfacing	Thickness: 6" Width: 16'																
<table style="width: 100%; border: none;"> <tr> <td><input checked="" type="checkbox"/> Grading</td> <td><input checked="" type="checkbox"/> Concrete</td> <td><input type="checkbox"/> Right of Way</td> <td><input type="checkbox"/> Lighting</td> </tr> <tr> <td><input type="checkbox"/> Aggregate</td> <td><input type="checkbox"/> Curb &amp; Gutter</td> <td><input checked="" type="checkbox"/> Utility Adjustments</td> <td><input type="checkbox"/> .....</td> </tr> <tr> <td><input type="checkbox"/> Armor Coat</td> <td><input type="checkbox"/> Drainage Structures</td> <td><input type="checkbox"/> Fencing</td> <td><input type="checkbox"/> .....</td> </tr> <tr> <td><input type="checkbox"/> Asphalt</td> <td><input type="checkbox"/> Erosion Control</td> <td><input type="checkbox"/> Sidewalks</td> <td><input type="checkbox"/> .....</td> </tr> </table>			<input checked="" type="checkbox"/> Grading	<input checked="" type="checkbox"/> Concrete	<input type="checkbox"/> Right of Way	<input type="checkbox"/> Lighting	<input type="checkbox"/> Aggregate	<input type="checkbox"/> Curb & Gutter	<input checked="" type="checkbox"/> Utility Adjustments	<input type="checkbox"/> .....	<input type="checkbox"/> Armor Coat	<input type="checkbox"/> Drainage Structures	<input type="checkbox"/> Fencing	<input type="checkbox"/> .....	<input type="checkbox"/> Asphalt	<input type="checkbox"/> Erosion Control	<input type="checkbox"/> Sidewalks	<input type="checkbox"/> .....
<input checked="" type="checkbox"/> Grading	<input checked="" type="checkbox"/> Concrete	<input type="checkbox"/> Right of Way	<input type="checkbox"/> Lighting															
<input type="checkbox"/> Aggregate	<input type="checkbox"/> Curb & Gutter	<input checked="" type="checkbox"/> Utility Adjustments	<input type="checkbox"/> .....															
<input type="checkbox"/> Armor Coat	<input type="checkbox"/> Drainage Structures	<input type="checkbox"/> Fencing	<input type="checkbox"/> .....															
<input type="checkbox"/> Asphalt	<input type="checkbox"/> Erosion Control	<input type="checkbox"/> Sidewalks	<input type="checkbox"/> .....															
<b>Bridge to Remain in Place</b>	Roadway Width:	Length: Type:																
<b>New Bridge</b>	Roadway Width:	Length: Type:																
<b>Box Culvert</b>	Span: Rise: Length:	Type:																
<b>Culvert</b>	Diameter: Length:	Type:																
<b>Bridges and Culverts Sized</b>	<input type="checkbox"/> Yes <input type="checkbox"/> N/A <input type="checkbox"/> Hydraulic Analysis Pending																	
Other Construction Features: Concrete ditch liner.																		
<b>ESTIMATED COST</b> (In Thousands) ★ OPTIONAL	★ COUNTY	★ CITY	★ STATE	★ FEDERAL	★ OTHER	TOTAL												
		75,000.00				75,000.00												
Project Length: (Nearest Tenth, State Unit of Measure) 0.3 mile			Project No.: M-172(94)															
Signature: <i>Morse Clark</i>		Title: Street Supt. S-1385		Date: January 2018														

**CITY OF BROKEN BOW  
RESOLUTION 2018-10**

**BE IT RESOLVED BY THE MAYOR AND COUNCIL OF THE CITY OF  
BROKEN BOW, NEBRASKA:**

Section 1. That the City Council of the City of Broken Bow, Nebraska, hereby accepts and approves the One and Six Year Street Improvement Plan for the City of Broken Bow, Nebraska, as presented by City Street Superintendent Monte Clark.

It was moved by Councilmember \_\_\_\_\_ and seconded by Councilmember \_\_\_\_\_ that the above resolution be adopted and the roll being called the same was the vote:

Ayes: \_\_\_\_\_

Nays: \_\_\_\_\_

Passed and approved this 13<sup>th</sup> day of February, 2018.

\_\_\_\_\_  
Cecil Burt, Mayor

ATTEST:

\_\_\_\_\_  
Stephanie M. Wright, City Clerk

(S E A L)

# **RESOLUTION**

## **No. 2018-11**

WHEREAS, there are federal funds available under Section 5311 of the Federal Transit Act and for the Nebraska Public Transportation Assistance Program, and

WHEREAS, the City of Broken Bow Handi Bus desires to apply for said funds to provide public transportation in Broken Bow and Custer County.

NOW THEREFORE, BE IT RESOLVED; the Mayor hereby instructs the City of Broken Bow Handi Bus to apply for said funds. Said funds are to be used for the City of Broken Bow Handi Bus transportation operations in the FY 2018-2019 Application for Public Transportation Assistance.

Moved by Councilmember \_\_\_\_\_

Seconded by Councilmember \_\_\_\_\_

AFFIRMATIVE VOTE: \_\_\_\_\_

Approved this 13<sup>th</sup> day of February, 2018.

\_\_\_\_\_  
Cecil Burt, Mayor

Attested by: \_\_\_\_\_  
Stephanie M. Wright, City Clerk

**RESOLUTION 2018-12**

**RESOLUTION AUTHORIZING PAYMENT #1 TO  
JEO CONSULTING GROUP, INC.**

BE IT RESOLVED BY THE MAYOR AND COUNCIL OF THE CITY OF BROKEN BOW, NEBRASKA:

WHEREAS, JEO Consulting Group, Inc. has submitted Pay Request No. 1 for work performed for 13% completed work Preliminary Design through January 5, 2018; and

WHEREAS, JEO Consulting Group, Inc. is entitled to a payment of \$2,484.00 for the Broken Bow 2018 Paving Improvements.

NOW, THEREFORE, BE IT RESOLVED, by the Mayor and City Council of Broken Bow, Nebraska: to authorize the City to sign all necessary documentation for payment and pay JEO Consulting Group, Inc. \$2,484.00.

PASSED AND APPROVED this 13<sup>th</sup> day of February, 2018.

\_\_\_\_\_  
Cecil Burt, Mayor

ATTEST:

\_\_\_\_\_  
Stephanie M. Wright, City Clerk

(S E A L)



ENGINEERING ■ ARCHITECTURE ■ SURVEYING ■ PLANNING

## Invoice

January 9, 2018

Project No: R170078.00

Invoice No: 100648

Invoice Amount: 2,484.00

City of Broken Bow  
PO Box 504  
314 So. 10th Avenue  
Broken Bow, NE 68822

Project Manager Ryan Kavan

Project R170078.00 Broken Bow 2018 Paving Improvements

Professional Services through January 5, 2018

	Contract Amount	Percent Complete	Billed-to-Date	Previous Billing	Current Billing
<b>Lump Sum Phase(s)</b>					
Preliminary Design	\$19,000.00	13 %	\$2,484.00	0.00	\$2,484.00
Bidding and Negotiating	\$3,200.00	0 %	0.00	0.00	0.00
Construction Services	\$7,800.00	0 %	0.00	0.00	0.00
SWPPP	\$1,300.00	0 %	0.00	0.00	0.00
<b>Hourly to a Maximum Phase(s)</b>					
RPR	\$5,100.00		0.00	0.00	0.00
<b>Total</b>	<b>\$36,400.00</b>		<b>\$2,484.00</b>	<b>0.00</b>	<b>\$2,484.00</b>
<b>Total Amount Due Upon Receipt</b>					<b>\$2,484.00</b>

---

**JEO CONSULTING GROUP INC ■ JEO ARCHITECTURE INC**

142 W. 11th Street | PO Box 207 | Wahoo, Nebraska 68066-0207 | p: 402.443.4661 | f: 402.443.3508

[www.jeo.com](http://www.jeo.com)

Return to Agenda

**RESOLUTION 2018-13**

**RESOLUTION AUTHORIZING PAYMENT #3 TO  
JEO CONSULTING GROUP, INC.**

BE IT RESOLVED BY THE MAYOR AND COUNCIL OF THE CITY OF BROKEN BOW, NEBRASKA:

WHEREAS, JEO Consulting Group, Inc. has submitted Pay Request No. 3 for work performed for 13% completed work of Task 2 – Railroad Levee EAP and Task 1 – SWIF Development through December 15, 2017; and

WHEREAS, JEO Consulting Group, Inc. is entitled to a payment of \$3,098.00 for the Broken Bow Flood Risk Reduction.

NOW, THEREFORE, BE IT RESOLVED, by the Mayor and City Council of Broken Bow, Nebraska: to authorize the City to sign all necessary documentation for payment and pay JEO Consulting Group, Inc. \$3,098.50.

PASSED AND APPROVED this 13<sup>th</sup> day of February, 2018.

\_\_\_\_\_  
Cecil Burt, Mayor

ATTEST:

\_\_\_\_\_  
Stephanie M. Wright, City Clerk

(S E A L)



ENGINEERING ■ ARCHITECTURE ■ SURVEYING ■ PLANNING

## Invoice

January 24, 2018

Project No: R171495.00

Invoice No: 100927

Invoice Amount: 3,098.00

City of Broken Bow  
PO Box 504  
314 So. 10th Avenue  
Broken Bow, NE 68822

Project Manager Joshua Johnson

Project R171495.00 Broken Bow Flood Risk Reduction

**Professional Services through January 19, 2018**

Refer to attached Progress Report

	Contract Amount	Percent Complete	Billed-to-Date	Previous Billing	Current Billing
<b>Lump Sum Phase(s)</b>					
Task 2 - Levee ROW Determination	\$8,500.00	100 %	\$8,500.00	\$8,500.00	0.00
Task 3 - Railroad Levee EAP	\$7,500.00	13 %	\$965.00	\$90.00	\$875.00
Task 4 - Programmatic Recommendations	\$10,000.00	0 %	0.00	0.00	0.00
<b>Hourly to a Maximum Phase(s)</b>					
Task 1 -SWIF Development	\$55,000.00		\$10,960.00	\$8,737.00	\$2,223.00
<b>Total</b>	<b>\$81,000.00</b>		<b>\$20,425.00</b>	<b>\$17,327.00</b>	<b>\$3,098.00</b>
<b>Total Amount Due Upon Receipt</b>					<b>\$3,098.00</b>

---

**JEO CONSULTING GROUP INC ■ JEO ARCHITECTURE INC**

142 W. 11th Street | PO Box 207 | Wahoo, Nebraska 68066-0207 | p: 402.443.4661 | f: 402.443.3508

[www.jeo.com](http://www.jeo.com)





## Monthly Progress Report

**PROJECT** | Broken Bow Flood Risk Reduction Project SWIF-EPP

**JEO PROJECT NO.** | 171495.00

**DATE PREPARED** | January 24, 2018

**1. Work Completed During Current Period (January 2018)**

- CAD drafting of easement and ROW boundaries
- Continued development of railroad tie-back levee EAP
- Completed topo survey of railroad tie-back levee
- Compilation of EAP documentation
- File ROW documentation with the State

**2. Planned Work for Next Period (February 2018)**

- Receive acceptance by the USACE of LOI and approval of SWIF effort
- Provide ROW/Levee station marker drawing
- Development of draft railroad tie-back levee EAP

**3. Project Schedule**

- Project schedule is being developed, contingent upon USACE feedback from the LOI regarding the SWIF

**4. Information Needed from the City**

- Input regarding railroad tie-back levee EAP items

**5. Next Meeting(s)**

- TBD

**RESOLUTION 2018-14**

**RESOLUTION AUTHORIZING PAYMENT TO  
CORNHUSKER STATE INDUSTRIES**

BE IT RESOLVED BY THE MAYOR AND COUNCIL OF THE CITY OF  
BROKEN BOW, NEBRASKA:

WHEREAS, Cornhusker State Industries has submitted an Invoice for Payment for  
Furniture at the Broken Bow Library in the amount of \$8,422.00,

NOW, THEREFORE, BE IT RESOLVED, by the Mayor and City Council of  
Broken Bow, Nebraska: authorizing the City to sign all necessary documentation for  
payment and to pay Cornhusker State Industries in the amount of \$8,422.00 for furniture.

PASSED AND APPROVED this 13<sup>th</sup> day of February, 2018.

---

Cecil Burt, Mayor

ATTEST:

---

Stephanie M. Wright, City Clerk

(S E A L)

# STATE OF NEBRASKA

## DEPT OF CORRECTIONAL SERVICES CORNHUSKER STATE INDUSTRIES

Interagency Billing # 460  
PO Box 94661  
Lincoln, NE 68509-4661  
(402) 479-5781



### IBT

Page Number: 1 of 2  
Invoice Number: 1099170  
Invoice Date: 01/29/18  
Sales Order: 137816 SI  
Account: 567006  
Customer PO: 11022017  
Due Date: 02/28/18

### BILLING ADDRESS:

BROKEN BOW PUBLIC LIBRARY  
626 S D ST  
BROKEN BOW NE 68822-2143

### SHIP TO:

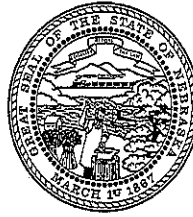
BROKEN BOW PUBLIC LIBRARY  
626 S D ST  
BROKEN BOW NE 68822-2143

Line #	Description	Item Number	Qty	UM	Unit Price	Extended Price
1.000	MAGAZINE RACK DWG #15-391A STAIN: MISSION OAK SW 3220 BASETRIM: RADIUS	42548-G-FR-999	2	EA	\$915.0000 Per EA	\$1,830.00
2.000	BOOKCASE, 4-SIDED DWG #10-215A STAIN: MISSION OAK SW 3220 BASETRIM: RADIUS	42503-G-BKC-999	2	EA	\$728.0000 Per EA	\$1,456.00
3.000	BOOKCASE & RISER, OCTAGON DWG #11-003 STAIN: MISSION OAK SW 3220	42503-G-BKC-999	1	EA	\$1,116.0000 Per EA	\$1,116.00
4.000	BOOKCASE & RISER, OCTAGON DWG #07-117 STAIN: MISSION OAK SW 3220	42503-G-BKC-999	2	EA	\$1,330.0000 Per EA	\$2,660.00
5.000	SHELF DWG #07-117 STAIN: MISSION OAK SW 3220 EXTRA SHELVES ONLY	42503-G-BKC-999-SHF	1	EA	\$0.0000 Per EA	
6.000	DESK, LR, 3000S, OAK	42521-G-DK-3000-L	1	EA	\$1,100.0000 Per EA	\$1,100.00

# STATE OF NEBRASKA

## DEPT OF CORRECTIONAL SERVICES CORNHUSKER STATE INDUSTRIES

Interagency Billing # 460  
PO Box 94661  
Lincoln, NE 68509-4661  
(402) 479-5781



### IBT

Page Number: 2 of 2  
Invoice Number: 1099170  
Invoice Date: 01/29/18  
Sales Order: 137816 SI  
Account: 567006  
Customer PO: 11022017  
Due Date: 02/28/18

### BILLING ADDRESS:

BROKEN BOW PUBLIC LIBRARY  
626 S D ST  
BROKEN BOW NE 68822-2143

### SHIP TO:

BROKEN BOW PUBLIC LIBRARY  
626 S D ST  
BROKEN BOW NE 68822-2143

Line #	Description	Item Number	Qty	UM	Unit Price	Extended Price
	30X72X78, CUSTOM LAM/STAIN STAIN: MISSION OAK SW 3220 LAMINATE: TRAVERTINE (S-PL-3526-58) HARDWARE: R-AC-351 EDGE: OVAL OVERLAY TRIM: RADIUS					
7.000	HUTCH, 3800S, OAK 34X47X13, CUSTOM STAIN STAIN: MISSION OAK SW 3220 ATTACH HUTCH TO DESK AT DELIVERY	42503-G-DK-3800	1	EA	\$260.0000 Per EA	\$260.00

Total Amount Invoiced: \$8,422.00

**RESOLUTION 2018-15**

**RESOLUTION AUTHORIZING PAYMENT #10 TO  
CHIEF CONSTRUCTION COMPANY**

BE IT RESOLVED BY THE MAYOR AND COUNCIL OF THE CITY OF BROKEN BOW, NEBRASKA:

WHEREAS, Chief Construction Company has submitted Application for Payment No. 10 for the Broken Bow Library Project in the amount of \$51,962.55 for materials and labor through January 31, 2018.

NOW, THEREFORE, BE IT RESOLVED, by the Mayor and City Council of Broken Bow, Nebraska: authorizing the City to sign all necessary documentation for payment and to pay Chief Construction Company the amount of \$51,962.55 for Payment No. 10.

PASSED AND APPROVED this 13<sup>th</sup> day of February, 2018.

---

Cecil Burt, Mayor

ATTEST:

---

Stephanie M. Wright, City Clerk

(S E A L)

# PAYMENT APPLICATION

Customer # 00913483

TO: CITY OF BROKEN BOW  
314 South 10th Ave  
PO BOX 504  
Broken Bow NE 68822

PROJECT Broken Bow Library DIV20  
NAME AND 626 South D Street  
LOCATION: Broken Bow NE 68822

APPLICATION # 10

Distribution to:

PERIOD THRU: 01/31/2018

Owner Project #:

\_\_\_ OWNER

\_\_\_ ARCHITECT

\_\_\_ CONTRACTOR

FROM: Chief Construction  
3935 Westgate Road  
PO Box 2078  
Grand Island NE 68802

ARCHITECT: JEO ARCHITECTURE INC  
11717 Burt Street  
Suite 210  
Omaha NE 68154-1510

DATE OF CONTRACT: 3/15/2017

## CONTRACTOR'S SUMMARY OF WORK

Application is made for payment as shown below.  
Continuation Page is attached

1. CONTRACT AMOUNT	1,460,813.00
2. SUM OF ALL CHANGE ORDERS	25,306.18
3. CURRENT CONTRACT AMOUNT (Line 1 + 2)	1,486,119.18
4. TOTAL COMPLETED AND STORED (Column G on Continuation Page)	1,473,749.90
5. RETAINAGE:	
A. 10% Of Completed Work (Columns D+ E on Continuation Page)	147,375.06
B. 0% of Material Stored (Column F on Continuation Page)	0.00
Total Retainage (Line 5a + 5b or Column I on Continuation Page)	147,375.06
6. TOTAL COMPLETED AND STORED LESS RETAINAGE: (Line 4 minus Line 5 Total)	1,326,374.84
7. LESS PREVIOUS CERTIFICATES FOR PAYMENT:	1,274,412.29
8. CURRENT PAYMENT DUE:	51,962.55
9. BALANCE TO FINISH: Line 3 - Line 6	159,744.34

SUMMARY OF CHANGE ORDERS	ADDITIONS	DEDUCTIONS
Total changes approved in previous months	25306.18	0.00
Total approved this month	0.00	0.00
TOTALS	25306.18	0.00
NET CHANGES	25,306.18	

Contractor's signature below is his assurance to Owner, concerning the payment herein applied for, that: (1) the Work has been performed as required in the Contract Documents, (2) all sums previously paid to Contractor under the Contract have been used to pay Contractor's costs for labor, materials and other obligations under the Contract for Work previously paid for, and (3) Contractor is legally entitled to this payment.

CONTRACTOR: Chief Construction

By: Cathy Sweet Cost Date: 2-1-18  
ACU

State of: Nebraska

County of: Hall

Subscribed and sworn to before me this 1st day of February, 2018

Notary Public: Kathryn A. Miller

My Commission Expires: 12-15-19



## ARCHITECT'S CERTIFICATION

In accordance with the Contract Documents, based on on-site observations and the data comprising this application, the Architect certifies to the Owner that to the best of the Architect's knowledge, information and belief the Work has progressed as indicated, the quality of the Work is in accordance with the Contract Documents, and the Contractor is entitled to payment of the CERTIFIED AMOUNT.

CERTIFIED AMOUNT: 51,962.55

(If the certified amount is different from the payment due, you should attach an explanation. Initial all the figures that changed to match the certified amount.)

ARCHITECT: JEO ARCHITECTURE INC

By: \_\_\_\_\_ Date: \_\_\_\_\_

Neither this Application nor payment applied for herein is assignable or negotiable. Payment shall be made only to Contractor, and is without prejudice to any rights of Owner or Contractor under the Contract Documents or otherwise.

# PAYMENT APPLICATION DETAILS

Customer: CITY OF BROKEN BOW  
Project: Broken Bow Library DIV20

Application Number: 10  
For Period Ending: 01/31/2018

A	B	C	D	E	F	G		H	I
			Work Completed		Materials Presently Stored	Completed and Stored To Date	Total %	Balance To Finish	Retainage Value
Item Number - Description		Scheduled Value	From Previous Application	This Period Value					
01	Gen Requirements	127,184.46	119773.22	7,411.24	0.00	127184.46	100.00	0.00	12,718.47
02	Exsting Conditions	66,228.39	66228.39	0.00	0.00	66228.39	100.00	0.00	6,622.84
03	Concrete	160,709.43	155017.46	5,691.97	0.00	160709.43	100.00	0.00	16,070.95
04	Masonry	85,824.15	85824.15	0.00	0.00	85824.15	100.00	0.00	8,582.42
05	Metals	111,114.32	82986.18	28,128.14	0.00	111114.32	100.00	0.00	11,111.43
06	Wood & Plastics	32,655.30	32655.30	0.00	0.00	32655.30	100.00	0.00	3,265.53
07	Thermal & Moisture Protection	46,604.22	46604.22	0.00	0.00	46604.22	100.00	0.00	4,660.43
08	Openings	129,040.68	129040.68	0.00	0.00	129040.68	100.00	0.00	12,904.06
09	Finishes	258,119.57	241614.74	16,504.83	0.00	258119.57	100.00	0.00	25,811.95
10	Specialties	22,441.04	20887.57	0.00	0.00	20887.57	93.08	1,553.47	2,088.76
12	Furnishings	48,823.04	45175.40	0.00	0.00	45175.40	92.53	3,647.64	4,517.54
22	Plumbing	82,112.20	82112.20	0.00	0.00	82112.20	100.00	0.00	8,211.23
23	HVAC	92,864.46	92864.46	0.00	0.00	92864.46	100.00	0.00	9,286.45
26	Electrical	164,020.59	164020.59	0.00	0.00	164020.59	100.00	0.00	16,402.08
31	Earthwork	51,469.92	49849.87	0.00	0.00	49849.87	96.85	1,620.05	4,984.99

## PAYMENT APPLICATION DETAILS

Customer: CITY OF BROKEN BOW  
Project: Broken Bow Library DIV20

Application Number: 10  
For Period Ending: 01/31/2018

A	B	C	D	E	F	G		H	I
			Work Completed		Materials Presently Stored	Completed and Stored To Date	Total %	Balance To Finish	Retainage Value
Item Number - Description		Scheduled Value	From Previous Application	This Period Value					
32	Exterior Improvements	6,907.41	1359.29	0.00	0.00	1359.29	19.68	5,548.12	135.93
TOTAL:		1,486,119.18	1,416,013.72	57,736.18	0.00	1473749.90	99.17	12,369.28	147,375.06



**RESOLUTION 2018-16**

**RESOLUTION AUTHORIZING PAYMENT TO  
WESTBROOK AUDIO**

BE IT RESOLVED BY THE MAYOR AND COUNCIL OF THE CITY OF  
BROKEN BOW, NEBRASKA:

WHEREAS, Westbrook Audio has submitted an Invoice for Payment for the  
Audio Equipment and Installation at the Broken Bow Library in the amount of  
\$3,757.18.

NOW, THEREFORE, BE IT RESOLVED, by the Mayor and City Council of  
Broken Bow, Nebraska: authorizing the City to sign all necessary documentation for  
payment and to pay Westbrook Audio in the amount of \$3,757.18 for audio equipment.

PASSED AND APPROVED this 13<sup>th</sup> day of February, 2018.

\_\_\_\_\_  
Cecil Burt, Mayor

ATTEST:

\_\_\_\_\_  
Stephanie M. Wright, City Clerk

(S E A L)

# WESTBROOK AUDIO

105 W Jefferson Avenue  
ARNOLD, NE 69120-6831  
308-848-3390

*Broken Bow Library*  
NAME *C/O City of Broken Bow*  
ADDRESS *P.O. Box 584*  
*B.B. - 68822* PH. NO. *1-13-2018* DATE

SOLD BY	CASH	C.O.D.	CHARGE	ON ACCT.	MDSE. RETD.	PAID OUT	LAYAWAY
QTY.	DESCRIPTION					PRICE	AMOUNT
1-	ordered Teller rack with Extra drawers - Cost = (1,189.73)						
	Less \$ 750.00 paid =					439.73	
1-	Amplifier Security Cover -					40.95	
1-	Equalizer exp. 11" -					35.00	
	Finishing job for T.V.'s -						
2-	Direct Box's 45 each -					90.00	
2-	optical analogue converters 85.50 each -					171.00	
2-	Digital audio Cables 5' - 30.00 each -					60.00	
2-	STEREO - RCA 1/4" Cables 10' - 10.50 each -					21.00	
	Hardware - (Conduit, Adapters etc.)					20.55	
	freight for all =					387.71	
35 hrs	Labor at \$65.00 =					2,275.00	
	mileage - 6 trips 68 each -					216.24	
	Donations = 2 microphone stands, 2 microphones, 2 Direct boxes, 4 Cables + 2 panels = \$535.00						
1.33% Interest Per Month Will Be Charged On							
Accounts 30 Days Past Due.							
RECEIVED BY	<i>Joan Bernie</i>					TAX	
						TOTAL	<i>3,757.18</i>

No. *002419* ALL CLAIMS AND RETURNED GOODS MUST BE ACCOMPANIED BY THIS BILL.

GP-153-2  
PRINTED IN U.S.A.

Thank You

**RESOLUTION 2018-17**

**RESOLUTION AUTHORIZING PAYMENT #18 TO  
JEO CONSULTING GROUP, INC.**

BE IT RESOLVED BY THE MAYOR AND COUNCIL OF THE CITY OF BROKEN BOW, NEBRASKA:

WHEREAS, JEO Consulting Group, Inc. has submitted Pay Request No. 18 for work performed for Construction Administration through January 26, 2018; and

WHEREAS, JEO Consulting Group, Inc. is entitled to a payment of \$1,578.00 for the Broken Bow Library Design Services/Building Renovation and Addition.

NOW, THEREFORE, BE IT RESOLVED, by the Mayor and City Council of Broken Bow, Nebraska: to authorize the City to sign all necessary documentation for payment and pay JEO Consulting Group, Inc. \$1,578.00.

PASSED AND APPROVED this 13<sup>th</sup> day of February, 2018.

\_\_\_\_\_  
Cecil Burt, Mayor

ATTEST:

\_\_\_\_\_  
Stephanie M. Wright, City Clerk

(S E A L)



ENGINEERING ■ ARCHITECTURE ■ SURVEYING ■ PLANNING

## Invoice

February 1, 2018

Project No: R120249.02

Invoice No: 101026

Invoice Amount: 1,578.00

City of Broken Bow  
PO Box 504  
314 So. 10th Avenue  
Broken Bow, NE 68822

Project Manager Marvin Larson

Project R120249.02 Broken Bow Library Design Services/ Building Renovation and Addition

**Professional Services through January 26, 2018**

	Contract Amount	Percent Complete	Billed-to-Date	Previous Billing	Current Billing
<b>Lump Sum Phase(s)</b>					
Design Development	\$31,500.00	100 %	\$31,500.00	\$31,500.00	0.00
Construction Documents	\$104,100.00	100 %	\$104,100.00	\$104,100.00	0.00
Bidding and Negotiation	\$9,000.00	100 %	\$9,000.00	\$9,000.00	0.00
<b>Hourly Phase(s)</b>					
Construction Administration			\$47,184.16	\$45,606.16	\$1,578.00
Reimbursable Expenses			\$330.00	\$330.00	0.00
<b>Total</b>	<b>\$144,600.00</b>		<b>\$192,114.16</b>	<b>\$190,536.16</b>	<b>\$1,578.00</b>
<b>Total Amount Due Upon Receipt</b>					<b>\$1,578.00</b>

---

**JEO CONSULTING GROUP INC ■ JEO ARCHITECTURE INC**

142 W. 11th Street | PO Box 207 | Wahoo, Nebraska 68066-0207 | p: 402.443.4661 | f: 402.443.3508

[www.jeo.com](http://www.jeo.com)

Return to Agenda

**RESOLUTION 2018-18**

**RESOLUTION AUTHORIZING PAYMENT TO  
BOW FAMILY FURNITURE**

BE IT RESOLVED BY THE MAYOR AND COUNCIL OF THE CITY OF  
BROKEN BOW, NEBRASKA:

WHEREAS, Bow Family Furniture has submitted an Invoice for Payment for the  
Payment for Furniture at the Broken Bow Library in the amount of \$24,259.20,

NOW, THEREFORE, BE IT RESOLVED, by the Mayor and City Council of  
Broken Bow, Nebraska: authorizing the City to sign all necessary documentation for  
payment and to pay Bow Family Furniture in the amount of \$24,259.20 for furniture.

PASSED AND APPROVED this 13<sup>th</sup> day of February, 2018.

\_\_\_\_\_  
Cecil Burt, Mayor

ATTEST:

\_\_\_\_\_  
Stephanie M. Wright, City Clerk

(S E A L)

<b>BOW FAMILY FURNITURE &amp; FLOORING</b>					
305 So. 9th Avenue					
PO Box 465					
Broken Bow, NE 68822					
308-872-6461					
<div style="border: 1px solid black; padding: 5px; text-align: center;">             Broken Bow Public Library              220 Industrial Park Dr.              Broken Bow, NE 68822              308-872-2927           </div>					
<b>DATE</b>		<b>DESCRIPTION</b>	<b>CHARGE</b>	<b>PAYMENT</b>	<b>BALANCE</b>
11/29/17	70002	ROA Ck#251 Furniture Downpment		12000.00	-12000.00
01/24/18	20660	Furniture	\$34,694.20		\$22,694.20
02/01/18	20700	Accessories	\$1,565.00		\$24,259.20
<b>CURRENT BALANCE DUE</b>					<b>\$24,259.20</b>
THANK YOU FOR SHOPPING LOCALLY ! WE APPRECIATE YOUR PATRONAGE !!					

Thank  
you

## BOW FAMILY FURNITURE &amp; FLOORING

PO BOX 465

BROKEN BOW, NE 68822

## BILLING STATEMENT FOR BROKEN BOW PUBLIC LIBRARY

			CHARGES	PAYMENTS	BALANCE
				\$12,000.00	-\$12,000.00
11/29/2017			DOWN PAYMENT RECEIVED CK #251		
QTY	JANUARY 2018:				
1	MAIN ENTRANCE	LOVESEAT	\$ 869.00		-\$11,131.00
5	MAIN ENTRANCE	CHAIRS	\$2,495.00		-\$8,636.00
4	MAIN ENTRY	END TABLE	\$ 759.00		-\$7,877.00
1	MAIN ENTRY	ROUND COCKTAIL	\$ 189.00		-\$7,688.00
1	MAIN ENTRY	OVAL COCKTAIL	\$ 189.00		-\$7,499.00
1	MAIN ENTRY	SOFA TABLE	\$ 189.00		-\$7,310.00
1	MAIN ENTRY	BENCH	\$ 289.00		-\$7,021.00
2	MTG ROOMS	RETRO TABLE & CHAIR	\$1,258.00		-\$5,763.00
4	36" RD TBL-TALL	TABLE WITH 6 CHAIRS	\$ 779.00		-\$4,984.00
		36" ROUND WALNUT LAMINATE TOP TABLE			
		W/24" ROUND BAR HEIGHT TABLE BASE & FOOT RING			
20	MAIN ENT & COMP AREA (&SHELF AREA)	BARSTOOLS FOR TBLS			
	BARSTOOLS	HERCULES SERIES BLACK LADDER BACK METAL	\$1,359.00		-\$3,625.00
	(4 FOR SHELF AREA)	RESTAURANT BARSTOOL-BLACK VINYL SEAT			
		CREDIT FOR 4 UNUSED BARSTOOLS		\$ (271.80)	-\$3,896.80
2	30 x60	30 x 60 (5') WALNUT LAM TABLE W/RD PED (12 CHRS)	\$ 379.00		-\$3,517.80
3	36 x 36 SQ	36" X 36" SQ TABLE (NEED 12 CHRS)	\$ 479.00		-\$3,038.80
24	CHAIRS	LADDER BACK CHAIR METAL 500# WT CAPACITY	\$1,189.00		-\$1,849.80
1	MAIN LIBRARY	CHAIR & 1/2	\$ 565.00		-\$1,284.80
2	MAIN LIB/COMP	CHAIRS	\$ 859.00		-\$425.80
2	MAIN LIB/COMP	CHAIRS	\$1,039.00		\$613.20
2	READING	TRIANGLE END TABLE	\$ 198.00		\$811.20
2	FIREPLACE	TRIANGLE END TABLE	\$ 198.00		\$1,009.20
1	FIREPLACE	REC COCKTAIL TABLE	\$ 159.00		\$1,168.20
1	FIREPLACE	LOVESEAT	\$ 869.00		\$2,037.20
4	FIREPLACE	CHAIRS FLORA	\$2,259.00		\$4,296.20
2	TEEN AREA	CORNER BEAN BAG GREY	\$ 438.00		\$4,734.20
1	TEEN AREA	CORNER BEAN BAG Navy	\$ 219.00		\$4,953.20
4	TEEN AREA	ARMLESS BEAN BAG GREY	\$ 699.00		\$5,652.20
2	TEEN AREA	ARMLESS BEAN BAG Navy	\$ 349.00		\$6,001.20
4	TEEN AREA	BEAN BAG Navy	\$ 749.00		\$6,750.20
1	TEEN AREA	BEAN BAG CASUAL CH/ GREY & OTTOMAN	\$ 249.00		\$6,999.20
2	TEEN AREA	RECT TABLE	\$1,058.00		\$8,057.20
4	TEEN AREA	CHAIR BLACK	\$ 380.00		\$8,437.20
8	TEEN AREA	CHAIR GREEN	\$ 760.00		\$9,197.20
4	CHILDRENS AREA	CHAIRS ADULT UPHOLSTERED CHAIRS	\$2,259.00		\$11,456.20
2	CHILDRENS AREA	CHAIR & 1/2 ADULT UPHOLSTERED CHAIR	\$2,258.00		\$13,714.20
2	CHILDRENS	TRIANGLE END TABLE	\$ 198.00		\$13,912.20
1	CHILDRENS	ROCKING CHAIR ADULT	\$ 189.00		\$14,101.20
3	FLOWER TBL	MOBIL 60" FLOWER GREY THERMAL LAMINATE TOP	\$ 749.00		\$14,850.20
		ACTIVITY TABLE-STANDARD HEIGHT ADJUSTABLE LEGS			
29	CHAIRS	18" SEAT HEIGHT STACK CHAIR	\$1,079.00		\$15,929.20
14	TABLES	72" ROUND GRANITE WHITE PLASTIC FOLDING TABLE	\$2,989.00		\$18,918.20
115	CHAIRS	FOLDING HERCULES SERIES CURVD TRIP BRACED & DBL HINGED	\$3,269.00		\$22,187.20
		BLACK VINYL FABRIC METAL FOLDING CHAIR			
		300# WT CAPACITY			
3	TRASH	TRASH RECEPTICLES	\$ 507.00		\$22,694.20
FREE DELIVERY & SET UP					
TOTAL DUE					<u>\$22,694.20</u>

Thank you for the opportunity to be of service

BOW FAMILY FURNITURE & FLOORING  
PO Box 465  
Broken Bow, NE 68822

MISC ACCESSORIES:

QTY	ITEM#	DESCRIPTION	SUGGESTED RETAIL	OUR PRICE	LIBRARY PRICE
2	SCFARR	SULL 3 JAR FLOWER	\$ 39.00	\$ 29.00	\$ 25.00
—	**	**	\$ 39.00	\$ 29.00	\$ 25.00
1	#086174	GC CHOOSE HAPPY	\$ 59.00	\$ 39.00	\$ 35.00
1 SET	87713-3	IMX BOOK STACKING TABLES	\$ 199.00	\$ 149.00	\$ 139.00
1	CP04559SH3101	DANIEL BOOK LAMP	\$ 189.00	\$ 139.00	\$ 129.00
1 SET	3 PC	EG CANDL REM ST 3LED148 SMOKE GL	\$ 59.95	\$ 39.95	\$ 35.00
1	ER36312	PH ANTIQUE REPLICA TELEPHONE	\$ 59.00	\$ 39.00	\$ 35.00
1	ABC YF0550	PH ABCs	\$ 229.00	\$ 169.00	\$ 165.00
1	123 YF0551	PH 123s	\$ 89.00	\$ 69.00	\$ 65.00
2	YF4602	PH WOODEN ABC 123 HOLDERS	\$ 249.00	\$ 189.00	\$ 179.00
—	**	**	\$ 249.00	\$ 189.00	\$ 179.00
1	85492	GC SMALL BLUE FLOOR VASE	\$ 89.00	\$ 59.95	\$ 55.00
1	85491	GC LG BLUE FLOOR VASE	\$ 119.00	\$ 84.50	\$ 79.00
3	84682	GC LAVENDAR FLOWERS	\$ 42.97	\$ 26.25	\$ 24.00
4	85094	GC BLUE HYDRANGIA	\$ 39.99	\$ 31.99	\$ 26.00
1	WWZZ-GA105WT	BOTSILK SMALL PURPLE/GRN PLANT	\$ 55.00	\$ 45.00	\$ 42.00
1	960994	CSTER GRAY WALL CLOCK	\$ 209.00	\$ 149.00	\$ 140.00
1	CM2647	SULL 3 PC GRAY CERAMIC TRAY SET	\$ 29.00	\$ 19.00	\$ 15.00
1	GA-155WDOO-ZZ	BOTSILK SMALL GREENERY	\$ 59.00	\$ 45.00	\$ 40.00
1	MDT13	OFF STR HALL TREE W/UMBRELLA HOLDER	\$ 169.00	\$ 129.00	\$ 125.00
1	KLAK	SMALL PINE CONE ACCESSORY	\$ 15.99	\$ 12.99	\$ 8.00
TOTALS			\$ 2,287.90	\$ 1,682.63	\$ 1,565.00

FREE Delivery & Set Up

THANK YOU FOR THE OPPORTUNITY TO BE OF SERVICE.