

CITY OF BROKEN BOW
CITY COUNCIL AGENDA
November 28th, 2017 @ 12:00 NOON
City Hall Council Chambers
314 South 10th Avenue, Broken Bow, NE

Call to Order

A. Roll Call

B. Pledge of Allegiance

C. Open Meeting Law: A current copy of the Open Meetings Act is posted on the North wall in the rear of the Council Chambers and is available for review by all citizens in attendance.

D. Submittal of Requests for Future Items: Individuals who have appropriate items for City Council consideration should complete the Request for Future Agenda Items form located on the table by the door. If the issue can be handled administratively without Council action, notification will be provided. If the item is scheduled for a meeting or study session, notification of the date will be given.

E. Consent Agenda: The Mayor & Council will review and may or may not approve the consent agenda items for November 28th, 2017, which will include the following:

- a. Approval of Minutes of November 14th, 2017 Workshop Meeting [Hyperlink](#)
- b. Approval of Minutes of November 14th, 2017 Council Meeting [Hyperlink](#)
- c. Approval of Bills as Posted [Hyperlink](#)
- d. Approval of October Treasurer's Report [Hyperlink](#)

F. Recess for Board of Equalization

G. Open Board of Equalization

H. Roll Call

I. Hearing on Levying Special Assessments – Mayor and Council will sit as Board of Equalization to levy special assessments in connection with Street Improvement Districts Nos. 2014-1 and 2014-2 as authorized by Resolution 2017-71. [Hyperlink](#)

J. Adjourn

K. Return from Recess

L. Roll Call

M. New Business:

- a. **Resolution 2017-78 –Levying Special Assessments** – May or may not vote to approve levying special assessments for Street Improvement District Nos. 2014-1 and 2014-2. [Hyperlink](#)
- b. **Resolution 2017-79 – Central Nebraska Electric, Inc. -** May or may not vote to approve payment to Central Nebraska Electric, Inc.in the amount of \$15,109.75 for voice/data cabling at the Broken Bow Library. [Hyperlink](#)

CITY OF BROKEN BOW
CITY COUNCIL AGENDA
November 28th, 2017 @ 12:00 NOON
City Hall Council Chambers
314 South 10th Avenue, Broken Bow, NE

- c. **Resolution 2017-80 – NDOT Agreement** – May or may not vote to approve the agreement between the Nebraska Department of Transportation and the City of Broken Bow for the rectangular rapid flashing beacon installation. [Hyperlink](#)
- d. **Resolution 2017-81 – Westbrook Audio** – May or may not vote to approve payment to Westbrook Audio in the amount of \$8,153.00 for the audio system at the library. [Hyperlink](#)

N. Comments by Mayor and Council Members Concerning City Departments.

O. Closed Session – May or may not vote to enter into closed session to potential litigation.

P. Adjournment

Upcoming Events

- ❖ **November 30th** – Board of Adjustment Meeting at 12:00 pm @ Municipal Building
- ❖ **December 4th** – Park Board Meeting at 5:10 p.m. @ Municipal Building
- ❖ **December 6th** – Planning Commission Meeting at 12:00 pm @ Municipal Building
- ❖ **December 13th** – Board of Public Works Meeting at 12:30 pm @ Municipal Building

The next City Council Meeting will be on December 12th, 2017 @ 12:00 pm.

The Council will review the above matters and take such action as they deem appropriate. The Council may enter into closed session to discuss any matter on this agenda when it is determined by the council that it is clearly necessary for protection of the public interest or the prevention of needless injury to the reputation of any individual and if such individual has not requested a public meeting, or as otherwise allowed by law. Any closed session shall be limited to the subject matter for which the closed session was called. If the motion to close passes, immediately prior to the closed session the Mayor shall restate on the record the limitation of the subject matter of the closed session.

**Broken Bow City Council
Workshop Minutes
November 14th, 2017**

The Broken Bow City Council met in a Workshop Session on Tuesday, November 14th, 2017. Notice of the meeting was given in advance thereof as required by law by publication in the Custer County Chief on November 2, 2017. Advance notice of the meeting was also given to the Mayor and all members of the Council. Availability of the agenda was communicated in the advance notice to the Mayor and all members of the Council. All proceedings hereafter shown were taken while the meeting was open to the attendance of the public.

Mayor Burt called the meeting to order at 10:37 a.m., with the following Councilmembers present: Sonnichsen, Neth, and Myers. Councilmembers Absent: Holcomb. Holcomb entered at 10:56 a.m. Mayor Burt announced the availability of the open meetings law.

Megan Jackson from the Nebraska Recycling Council discussed recycling and trash disposal.

Moved by Sonnichsen, seconded by Myers, to adjourn the Workshop at 11:57 .m. Roll call vote: Voting aye: Sonnichsen, Myers, Holcomb, and Neth. Nays: none. Motion carried.

Cecil Burt, Mayor

ATTEST:

Stephanie M. Wright, City Clerk

**Broken Bow City Council
Meeting Minutes
November 14th, 2017**

The Broken Bow City Council met in regular session on Tuesday, November 14th, 2017. Notice of the meeting was given in advance thereof as required by law by publishing in the Custer County Chief on November 2, 2017. Availability of the agenda and related materials was communicated in the advanced notice to the Mayor and all members of the Council, as well as, shared with various media outlets. All proceedings hereafter shown were taken while the meeting was open to the attendance of the public.

Mayor Burt called the meeting to order at 12:01 P.M., with the following Councilmembers present: Sonnichsen, Neth, Myers, and Holcomb. Absent: None. Following the pledge of allegiance, Mayor Burt announced the availability of the open meetings law.

Mayor Burt read the new format for submitting requests for future agenda items.

Moved by Sonnichsen, seconded by Holcomb, to approve the consent agenda for November 14th, 2017. Said motion includes approval of Minutes of the October 24th Council Meeting and Bills to Date. Roll call vote: Voting aye: Neth, Holcomb, Sonnichsen, and Myers. Nays: None. Motion carried.

A to Z Lawn Pro, memorial park, 1,000.00; ATCO, supplies, 413.75; Aflac, insurance, 832.21, 170.93; Ben Tucker, meals, 21.15; Black Hills Energy, gas, 350.72; Broken Bow Airport Authority, monthly payment, 1,083.33; Broken Bow Chamber of Commerce, ambulance incentive, 710.00; Broken Bow Mun Utilities, fuel, 2,721.71, fire hydrants, 2,029.56; Broken Bow Municipal Utilities, electric, 3,420.52; C3 Hotel – Hastings, hotel, 90.06; Captial One Bank, misc., 52.58; Card Services, supplies, 527.25; Carquest of Broken Bow, parts, 505.82; Cecil Burt Inc., screens, 284.22; Central Ne Medical Clinic, drug testing, 55.00; Century Link, telephone, 551.41; Chris Carlsen, meal, 77.05; City Flex Benefit Plan, flex, 26.04; City of Broken Bow – Health Insurance, insurance, 3,523.78, 28,248.48; City of Broken Bow Pension Fund, pension, 1,909.42, 6,504.64, 1,168.06; Consolidated Management Co., meal, 169.25; Custer County Chief, publication & subscription, 273.72; Custer County Treasurer, interlocal, 13,184.14; Custer Electric and Irrigation, GFCL, 21.23; Custer Public Power, CD Cell, 34.44; Dan Hanson, meal, 8.35; Deb's Embroidery Shop, embroidery, 156.44; EFTPS Online Payment, payroll, 2,012.40, 7,129.59, 8,604.86; Eakes Office Products, copies, 164.49; Fairfiled Inn & Suites – Kearney, hotel, 399.80; Family Heritage, insurance, 56.00; Farritor Auto Parts, mat, 25.00; Figgins Construction Co, armor coating, 6,798.40; Gateway Motors Inc., handibus repairs, 1,423.04; General Traffic Controls, signal lights, 476.70; Great Plains Communications, internet, 70.95; Grocery Kart, supplies, 30.72; Hire Right Solutions, drug testing, 43.26; Holcomb Mechanical LLC, ice machine repairs, 320.03; Holcomb Pharmacy, supplies, 146.95; Holmes Plumbing & Heating, rv park plunger, 34.03; Insurance Aid Services, fees, 2,076.42; Island Supply Welding Co., oxygen, 37.82; John Deere Financial, mower lease, 216.51; Kirkpatrick Cleaning, supplies, 101.86; Matheson Tri-Gas Inc, acetylene, 123.22; Mead Lumber, supplies, 1,177.00, 2,551.24; Michale Burnett, boots & meals, 112.79; Mid Plains Community College, CPR, 130.00; Miracle Dent, repairs, 11,168.12; Nebraska Child Support Payment Center, child support, 379.15; Nebraska Law Enforcement Training Center, Taylor Cert fee, 50.00; Nebraska Salt and Grain, ice salt, 1,675.50; OSA/Computers Plus, supplies, 431.00; Obrien's True Value, supplies, 417.59; Omaha State Bank, HSA, 318.75; Paulsen Inc., gravel, 433.24; Plains Equipment Group, parts, 210.42; Platte Valley Communications, hard drive, 1,041.85; Police Chief Assn of Nebraska, dues, 30.00; Prachts Ace Hardware, supplies, 4,675.59; Presto X Company, monthly service, 101.65; Pristine Cleaning, LLC, cleaning, 375.00; Province Plumbing, repair, 17.86; S&L Sanitation, trash, 49.30; Schmicks Market, supplies, 30.83; Shopko Store, supplies, 24.97; State Income Tax WH NE Online Payment, payroll, 2,502.67; Steve Scott, postage, 37.66; Trotter Service, repairs, 20.00; US Bank Equipment Finance, copier lease, 303.97; V-Bar Sales & Service, angle iron, 28.32; Verizon Wireless, internet, 132.54; Viaero

Wireless, telephone, 218.92; Village Uniform, laundry, 211.04; Wenquist Inc., supplies, 87.46; Bi-Weekly Payroll, payroll, 48,822.97; Total Bills = 178,184.71.

The County 4 Trail Mix group presented a check in the amount of \$8,474.41 for the Trail Master Plan.

Moved by Sonnichsen, seconded by Myers, to approve the Mayoral appointment of Rick Maas to the Housing Authority for a term ending August 2019. Roll call vote: Voting aye: Holcomb, Sonnichsen, Myers, and Neth. Nays: None. Motion carried.

Moved by Holcomb, seconded by Myers, to approve the Parade of Lights route from South 10th Avenue to South 7th Avenue on South D Street on Monday, November 27th, 2017. Roll call vote: Voting aye: Neth, Holcomb, Sonnichsen, and Myers. Nays: None. Motion carried.

Moved by Sonnichsen, seconded by Holcomb, to withdraw from the MOU with the Broken Bow Chamber. Roll call vote: Voting aye: Sonnichsen, Myers, Neth, and Holcomb. Nays: None. Motion carried.

Moved by Neth, seconded by Holcomb, to approve the membership level of \$2,500 with the Custer County Economic Development Corporation. Roll call vote: Voting aye: Myers, Neth, Holcomb, and Sonnichsen. Nays: None. Motion carried.

Moved by Sonnichsen, seconded by Holcomb, to open a public hearing at 12:12 p.m. to open a public hearing regarding Ordinance 1177, Downtown Improvements Bond. Roll call vote: Voting aye: Neth, Sonnichsen, Holcomb, and Myers. Nays: None. Motion carried. John Trecek from Ameritas presented the bond. It will be a 15 year bond for \$4.5 million. The interest rate will be 2.9%. Moved by Sonnichsen, seconded by Holcomb, to close the public hearing regarding Ordinance 1177, Downtown Improvements Bond. Roll call vote: Voting aye: Holcomb, Myers, Neth, and Sonnichsen. Nays: None. Motion carried.

After discussing the matter, Councilmember Sonnichsen introduced Ordinance No. 1177 entitled "AN ORDINANCE AUTHORIZING THE ISSUANCE OF GENERAL OBLIGATION VARIOUS PURPOSE BONDS, SERIES 2017, OF THE CITY OF BROKEN BOW, NEBRASKA IN THE PRINCIPAL AMOUNT OF FOUR MILLION FIVE HUNDRED THOUSAND DOLLARS ISSUED FOR THE PURPOSE OF PAYING THE COST OF CONSTRUCTING STREET IMPROVEMENTS IN STREET IMPROVEMENT DISTRICT NO. 2014-1 OF THE CITY." and moved that the statutory rule requiring reading on three different days be suspended. Councilmember Myers seconded the motion. The Mayor stated the motion and instructed the Clerk to call the roll. The Clerk called the roll and the following was the vote: Ayes: Myers, Neth, Sonnichsen, and Holcomb. Nays: None. Motion carried. The motion to suspend the rules was adopted by three-fourths of the Council and the statutory rule was declared suspended for consideration of said Ordinance. Said Ordinance was then read by title and thereafter Councilmember Sonnichsen moved for final passage of the Ordinance, which motion was seconded by Councilmember Holcomb. The Mayor stated the question, "Shall Ordinance No. 1177 be passed and adopted?" Upon roll call vote, the vote was as follows: Ayes: Neth, Myers, Holcomb, and Sonnichsen. Nays: None. Motion carried. The passage and adoption of said Ordinance having been concurred in by a majority of all members of the Council, the Mayor declared the Ordinance adopted and the Mayor in the presence of the Council signed and approved the Ordinance and the Clerk attested the passage and approval of the same and affixed her signature thereto.

Moved by Holcomb, seconded by Neth, to approve Change Order No. 2 for the Library Renovation in the amount of \$3,848.56. Roll call vote: Voting aye: Holcomb, Sonnichsen, Myers, and Neth. Nays: None. Motion carried.

Moved by Sonnichsen, seconded by Holcomb, to approve change Order No. 3 for the Library Renovation in the amount of \$3,775.20. Roll call vote: Voting aye: Sonnichsen, Neth, Holcomb, and Myers. Nays: None. Motion carried.

Moved by Neth, seconded by Sonnichsen, to approve Resolution 2017-74. Said resolution approves payment #7 to Chief Construction Company in the amount of \$151,732.80 for work completed on the Broken Bow Library Renovations through October 31, 2017. Roll call vote: Voting aye: Myers, Holcomb, Neth, and Sonnichsen. Nays: None. Motion carried.

Moved by Sonnichsen, seconded by Holcomb, to approve Resolution 2017-75. Said resolution approves payment #15 to JEO Consulting Group, Inc. in the amount of \$2,624.75 for work completed on the Broken Bow Library Design Services/Building Renovation and Addition through October 27, 2017. Roll call vote: Voting aye: Holcomb, Sonnichsen, Myers, and Neth. Nays: None. Motion carried.

Moved by Myers, seconded by Neth, to approve Resolution 2017-76. Said resolution approves payment #2 to JEO Consulting Group, Inc. in the amount of \$2,900.00 for work completed on the Trails Master Plan through April 21, 2017. Roll call vote: Voting aye: Neth, Holcomb, Sonnichsen, and Myers. Nays: None. Motion carried.

Moved by Myers, seconded by Holcomb, to approve Resolution 2017-77. Said resolution approves payment to JEO Consulting Group, Inc. in the amount of \$1,900.00 for General Engineering for the Trails Master Plan & Parks Meeting. Roll call vote: Voting aye: Myers, Neth, Holcomb, and Sonnichsen. Nays: None. Motion carried.

Mayor Burt opened the floor for comments from the Mayor and Councilmembers concerning City Departments. There were no comments.

Moved by Neth, seconded by Myers, to enter into closed session at 12:30 p.m. for the purpose of discussing strategy with respect to collective bargaining. The City representatives that shall remain present during the closed session including the Mayor and City Council are City Attorney Jason White, City Administrator Brent Clark, City Clerk Stephanie Wright, and Police Chief Steve Scott. Roll call vote: Voting aye: Neth, Sonnichsen, Myers, and Holcomb. Nays: None. Motion carried.

Moved by Sonnichsen, seconded by Neth, to exit out of closed session at 12:54 p.m. from the purpose of discussing strategy with respect to collective bargaining. Roll call vote: Voting aye: Holcomb, Myers, Sonnichsen, and Neth. Nays: None. Motion carried.

Moved by Sonnichsen, seconded by Myers, to adjourn the City Council Meeting at 12:55 p.m. Roll call vote: Voting aye: Sonnichsen, Myers, Holcomb, and Neth. Nays: None. Motion carried.

Cecil Burt, Mayor

ATTEST:

Stephanie M. Wright, City Clerk

Accounts Payable Detail Listing

City of Broken Bow

Vend# Vendor Name

Pay#	Post Date	Due Date	Amount	Invoice	Date	PO#	Date	Status
	Account#	Work Order		Description			Debit	Credit
Aflac								
25228	11/15/2017	11/15/2017	832.21					Ck# 200 Printed
	01-1501.00			PRE TAX AFLAC			832.21	0.00
25229	11/15/2017	11/15/2017	170.93					Ck# 200 Printed
	01-1501.00			AFLAC POST TAX			170.93	0.00
25241	11/15/2017	11/15/2017	287.83					Ck# 200 Printed
	01-1501.00			BBHA Aflac			287.91	0.00
	01-1501.00			rounding			0.00	0.08
							287.91	0.08
Bank of Broken Bow								
25249	11/28/2017	11/28/2017	36,039.68					Posted
	08-3410.00			motor grader payment			36,039.68	0.00
Black Hills Energy								
25251	11/28/2017	11/28/2017	1,240.17					Posted
	06-3220.00			Utilities-Gas			280.33	0.00
	04-3220.00			Utilities-Gas			143.92	0.00
	07-3220.00			Utilities-Gas			308.54	0.00
	02-3220.00			Utilities-Gas			507.38	0.00
							1,240.17	0.00
Bon Appetit								
25274	11/28/2017	11/28/2017	39.55					Posted
	07-3340.00			subscriptions			39.55	0.00
Bound Tree Medical								
25264	11/28/2017	11/28/2017	1,583.58					Posted
	05-3338.00			EMS Supplies			1,583.58	0.00
Broken Bow Rural Fire Board								
25262	11/28/2017	11/28/2017	11.92					Posted
	06-3220.00			1/2 new bulding utilities			11.92	0.00
CEDC								
25267	11/28/2017	11/28/2017	2,500.00					Posted
	01-3212.00			membership			2,500.00	0.00
Carquest of Broken Bow								
25258	11/28/2017	11/28/2017	36.85					Posted
	04-3310.00			wiper blades and antifreeze			36.85	0.00
Century Link								
25244	11/20/2017	11/20/2017	85.49					Ck# 204 Printed
	01-3221.00			General -Basic & Long Distance Radio			85.49	0.00
Chief Supply Corporation								
25270	11/28/2017	11/28/2017	121.52					Posted
	04-3312.00			long sleeve shirts			121.52	0.00
Circle V Stitching Post								
25247	11/28/2017	11/28/2017	234.00					Posted
	08-3223.00			hats			90.00	0.00
	06-3223.00			hats			9.00	0.00
	05-3223.00			hats			9.00	0.00
	09-3223.00			hats			54.00	0.00
	11-3223.00			hats			54.00	0.00
	01-3223.00			hats			18.00	0.00
							234.00	0.00
City Flex Benefit Plan								
25230	11/15/2017	11/15/2017	26.04					Ck# 201 Printed
	01-1501.00			SELECT FLEX-UNREIMBURSED M/D/V			26.04	0.00
25242	11/15/2017	11/15/2017	200.00					Ck# 201 Printed
	01-1501.00			BBHA Flex			200.00	0.00
City of Broken Bow - Health Insurance								
25240	11/15/2017	11/15/2017	3,523.78					Posted
	01-1501.00			HEALTH INSURANCE			3,523.78	0.00
City of Broken Bow Pension Fund								
25231	11/15/2017	11/15/2017	1,995.49					Posted
	01-1513.00			RETIREMENT LOAN PAYMENT			1,995.49	0.00

Accounts Payable Detail Listing

City of Broken Bow

Vend# Vendor Name

Pay#	Post Date	Due Date	Amount	Invoice	Date	PO#	Date	Status
	Account#	Work Order		Description			Debit	Credit
City of Broken Bow Pension Fund (continued)								
25232	11/15/2017	11/15/2017	6,234.18					Posted
	01-1502.00			RETIREMENT NEW			6,234.18	0.00
Consolidated Management Co.								
25271	11/28/2017	11/28/2017	139.95					Posted
	04-3205.00			meals for NLETC			139.95	0.00
Demco								
25278	11/28/2017	11/28/2017	119.47					Posted
	07-3223.00			supplies			119.47	0.00
Dollar General-Regions 410526								
25268	11/28/2017	11/28/2017	27.59					Posted
	01-3212.00			halloween candy			27.59	0.00
EFTPS Online Payment								
25236	11/15/2017	11/15/2017	1,940.76					Ck# 197 Printed
	01-1500.00			MEDICARE			1,940.76	0.00
25237	11/15/2017	11/15/2017	6,741.08					Ck# 197 Printed
	01-1500.00			FEDERAL MARRIED			4,061.95	0.00
	01-1500.00			FEDERAL SINGLE			2,679.13	0.00
							6,741.08	0.00
25238	11/15/2017	11/15/2017	8,298.22					Ck# 197 Printed
	01-1500.00			SOCIAL SECURITY			8,298.22	0.00
Family Heritage								
25233	11/15/2017	11/15/2017	56.00					Ck# 202 Printed
	01-1501.00			FAMILY HERITAGE			56.00	0.00
General Traffic Controls								
25252	11/28/2017	11/28/2017	72.80					Posted
	08-3422.00			traffic signal light			72.80	0.00
Hokanson Clan Helping Hands								
25269	11/28/2017	11/28/2017	450.00					Posted
	07-3419.01			cleaning service			450.00	0.00
Hometown Leasing								
25263	11/28/2017	11/28/2017	200.17					Posted
	04-3216.00			Copier Lease			111.26	0.00
	07-3216.00			Copier Lease			88.91	0.00
							200.17	0.00
Ingram Library Services								
25276	11/28/2017	11/28/2017	1,925.30					Posted
	07-3340.00			materials			1,925.30	0.00
Insurance Aid Services								
25250	11/28/2017	11/28/2017	2,186.63					Posted
	05-3336.00			Insurance Aid Fees			2,186.63	0.00
Kim Blackburn								
25280	11/28/2017	11/28/2017	114.97					Posted
	07-3205.00			NLA conference expenses			114.97	0.00
Kirkpatrick Cleaning Solutions								
25265	11/28/2017	11/28/2017	78.34					Posted
	02-3223.01			trash bags			78.34	0.00
Markham Construction								
25254	11/28/2017	11/28/2017	225.78					Posted
	08-3425.00			concrete chairs			225.78	0.00
Martha Stewart Living								
25284	11/28/2017	11/28/2017	25.00					Posted
	07-3340.00			subscription			25.00	0.00
Matheson Tri-Gas Inc								
25253	11/28/2017	11/28/2017	44.72					Posted
	08-3310.00			argon and oxygen			44.72	0.00
Megan Svoboda								
25279	11/28/2017	11/28/2017	41.63					Posted
	07-3205.00			NLA conference travel expense			41.63	0.00

Accounts Payable Detail Listing

City of Broken Bow

Vend# Vendor Name

<u>Pay#</u>	<u>Post Date</u>	<u>Due Date</u>	<u>Amount</u>	<u>Invoice</u>	<u>Date</u>	<u>PO#</u>	<u>Date</u>	<u>Status</u>
	<u>Account#</u>	<u>Work Order</u>		<u>Description</u>			<u>Debit</u>	<u>Credit</u>
Trotter Service (continued)								
25245	11/28/2017	11/28/2017	178.33					Posted
	06-3225.00		fuel				20.34	0.00
	04-3225.00		fuel				20.62	0.00
	05-3225.00		fuel				117.87	0.00
	09-3310.00		tire repair				19.50	0.00
							178.33	0.00
25257	11/28/2017	11/28/2017	1,067.76					Posted
	04-3310.00		tires for 405 and 406				1,067.76	0.00
Verizon Wireless								
25243	11/20/2017	11/20/2017	30.02					Ck# 205 Printed
	06-3221.00		Data				30.02	0.00
Woods & Aitken LLP								
25266	11/28/2017	11/28/2017	884.50					Posted
	01-3214.00		legal fees				884.50	0.00
			85,554.24	57 Non-voided payables listed.				

Report Setup

AP - Accounts Payable Listing : Vendor Name

Filter Options

Starting: 11/15/2017

Ending: 11/28/2017

Banks: All

Payable Status: Posted, Printed, ACH, Recorded, Voided

All Vendors Selected

Payroll \$47,101.72

Check Approval List - GL Account

11/21/2017 2:16:24 PM

City of Broken Bow

Page 1 of 2

<u>Vendor Name</u>	<u>Invoice</u>	<u>Invoice Description</u>	<u>Account Description</u>	<u>Amount</u>
General				
Aflac		AFLAC POST TAX	Health/Life/Acc Insuranc	\$170.93
Aflac		BBHA Aflac	Health/Life/Acc Insuranc	\$287.91
Aflac		BBHA Aflac	Health/Life/Acc Insuranc	(\$0.08)
Aflac		PRE TAX AFLAC	Health/Life/Acc Insuranc	\$832.21
CEDC		membership	City Promotions	\$2,500.00
Century Link		telephone	Telephone/Internet	\$85.49
Circle V Stitching Post		hats	Supplies & Postage	\$18.00
City Flex Benefit Plan		SELECT FLEX-UNREIMBURSED M/D/V	Health/Life/Acc Insuranc	\$26.04
City Flex Benefit Plan		BBHA Flex	Health/Life/Acc Insuranc	\$200.00
City of Broken Bow - Health Insurance		HEALTH INS	Health/Life/Acc Insuranc	\$3,523.78
City of Broken Bow Pension Fund		RETIREMENT NEW	Pension	\$6,234.18
City of Broken Bow Pension Fund		RETIREMENT LOAN PAYMENT	Loan Payment	\$1,995.49
Dollar General-Regions 410526		halloween candy	City Promotions	\$27.59
EFTPS Online Payment		MEDICARE	Payroll Taxes	\$1,940.76
EFTPS Online Payment		FEDERAL	Payroll Taxes	\$4,061.95
EFTPS Online Payment		FEDERAL	Payroll Taxes	\$2,679.13
EFTPS Online Payment		FICA	Payroll Taxes	\$8,298.22
Family Heritage		FAMILY HERITAGE	Health/Life/Acc Insuranc	\$56.00
Nebraska Child Support Payment Center		CHILD SUPPORT-NE	Child Support	\$379.15
Omaha State Bank		HSA	Health/Life/Acc Insuranc	\$318.75
State Income Tax WH NE Online Paymei		STATE	Payroll Taxes	\$862.60
State Income Tax WH NE Online Paymei		STATE	Payroll Taxes	\$1,498.03
Sublime Artistry		website hosting	Miscellaneous Expense	\$87.00
Woods & Aitken LLP		legal fees	Legal Fees	\$884.50
			Total General	\$36,967.63
Municipal Building				
Black Hills Energy		gas	Utilities	\$507.38
Kirkpatrick Cleaning Solutions		trash bags	Building Cleaning Suppli	\$78.34
Pristine Cleaning, LLC		cleaning service	Contracted Services	\$325.00
			Total Municipal Building	\$910.72
Police				
Black Hills Energy		gas	Utilities	\$143.92
Carquest of Broken Bow		wiper blades and antifreeze	Maint/Repair Equipment	\$36.85
Chief Supply Corporation		long sleeve shirts	Uniforms	\$121.52
Consolidated Management Co.		meals for NLETC	Travel & Meeting Expen	\$139.95
Hometown Leasing		copier leases	Copier Maint/Expense	\$111.26
Trotter Service		fuel and tire repair	Gas and Oil	\$20.62
Trotter Service		tires for 405 and 406	Maint/Repair Equipment	\$1,067.76
			Total Police	\$1,641.88
Rescue Unit				
Bound Tree Medical		EMS Supplies	Ambulance Supplies	\$1,583.58
Circle V Stitching Post		hats	Supplies & Postage	\$9.00
Insurance Aid Services		insurance aid fees	Insurance Aid Fees	\$2,186.63
Trotter Service		fuel and tire repair	Gas and Oil	\$117.87
			Total Rescue Unit	\$3,897.08
Fire				
Black Hills Energy		gas	Utilities	\$280.33
Broken Bow Rural Fire Board		1/2 of new building utilities	Utilities	\$11.92
Circle V Stitching Post		hats	Supplies & Postage	\$9.00
OSA/Computers Plus		office supplies	Supplies & Postage	\$1.19
Taylor Heating & Cooling LLC		repair heater in blue building	Maintenance & Repair B	\$73.83
Trotter Service		fuel and tire repair	Gas and Oil	\$20.34
Verizon Wireless		data	Telephone/Internet	\$30.02
			Total Fire	\$426.63
Library				

Check Approval List - GL Account

11/21/2017 2:16:24 PM

City of Broken Bow

Page 2 of 2

<u>Vendor Name</u>	<u>Invoice</u>	<u>Invoice Description</u>	<u>Account Description</u>	<u>Amount</u>
Library				
Black Hills Energy		gas	Utilities	\$308.54
Bon Appetit		subscriptions	Book Purchases	\$39.55
Demco		supplies	Supplies & Postage	\$119.47
Hokanson Clan Helping Hands		cleaning service	Contracted Services	\$450.00
Hometown Leasing		copier leases	Copier Maint/Expense	\$88.91
Ingram Library Services		materials	Book Purchases	\$1,925.30
Kim Blackburn		NLA conference expenses	Travel & Meeting Expense	\$114.97
Martha Stewart Living		subscription	Book Purchases	\$25.00
Megan Svoboda		NLA conference travel expense	Travel & Meeting Expense	\$41.63
Nebraskaland Magazine		subscription	Book Purchases	\$44.00
OCLC Inc.		subscription	Book Purchases	\$128.93
OSA/Computers Plus		office supplies	Supplies & Postage	\$40.91
Presto X Company		pest service	Maintenance & Repair B	\$47.00
Real Simple		subscription	Book Purchases	\$15.00
Sports Illustrated		subscription	Book Purchases	\$38.00
Taste of Home		subscription	Book Purchases	\$32.98
The New Yorker		subscription	Book Purchases	\$99.99
			Total Library	\$3,560.18
Street				
Bank of Broken Bow		motor grader payment	Equipment Purchases	\$36,039.68
Circle V Stitching Post		hats	Supplies & Postage	\$90.00
General Traffic Controls		traffic signal light	New Street Lights	\$72.80
Markham Construction		concrete chairs	Street Construction	\$225.78
Matheson Tri-Gas Inc		argon and oxygen	Maint/Repair Equipment	\$44.72
NMC Exchange LLC		antenna	Maint/Repair Equipment	\$41.64
Paulsen Inc.		concrete blankets	Shop Tools	\$908.00
			Total Street	\$37,422.62
Park				
Circle V Stitching Post		hats	Supplies & Postage	\$54.00
Trotter Service		fuel and tire repair	Maint/Repair Equipment	\$19.50
			Total Park	\$73.50
Sanitation				
Circle V Stitching Post		hats	Supplies & Postage	\$54.00
			Total Sanitation	\$54.00
ST Infra/Capital				
The Angela Foundation Inc.		Library rent	Library	\$600.00
			Total ST Infra/Capital	\$600.00
				<u>\$85,554.24</u>

Report Selection: Check Approval List - GL Account
 Date Range Selection: GL Posting Date
 Starting Date: 11/15/2017
 Ending Date: 11/28/2017

Payroll \$47,101.72

City Account Balances October 2017

	Beginning Balance	Receipts	Disbursements	Ending Balance
<u>Nebraska State Bank</u>				
General Checking	160,044.17	442,011.02	(550,185.93)	51,869.26
Bond Account	206,757.07	33,326.06	(52,947.50)	187,135.63
Street Dept Savings	200.00	-	-	200.00
Health Insurance	108,566.15	2,525.90	(57,363.69)	53,728.36
General Savings	2,331.42	-	-	2,331.42
Short-Term Disability/Health	2,762.02	0.24	-	2,762.26
Redevelopment Authority (CRA)	108,503.01	26,436.82	(123,529.91)	11,409.92
Redevelopment Authority Savings (CRA)	13,264.05	-	-	13,264.05
Bond CD 394	112,440.15	311.75	-	112,751.90
Bond CD 783	100,347.43	-	-	100,347.43
 <u>Bruning State Bank</u>				
General Money Market	133,264.58	33.96	-	133,298.54
General Savings	311,251.53	98,000.25	-	409,251.78
Sales Tax Money Market	382,530.09	121.35	(250,000.00)	132,651.44
Sales Tax Savings	99,447.69	114,978.12	-	214,425.81
General Checking	101.64	250,000.00	(250,000.00)	101.64
Memorial Fund	38,306.32	-	-	38,306.32
CD Cell Financial Assistance	31,918.31	6.78	-	31,925.09
CDBG	197.98	-	-	197.98
Flex Benefit	6,192.38	-	-	6,192.38
Pension	20,116.06	-	(17,737.78)	2,378.28
Broken Bow Keno	5,888.56	5,710.19	(7,190.88)	4,407.87
City Square Ira Stone Memorial CD	6,233.68	-	-	6,233.68
Health CD 247	150,679.72	379.02	-	151,058.74
Health CD 248	162,900.29	-	-	162,900.29
Health CD 462	80,540.77	-	-	80,540.77
Health CD 706	60,780.19	-	-	60,780.19

City of Broken Bow

Account	Account Name	Fiscal Year 17 - 18			Budget			Fiscal Year 16 - 17	
		Current	Year To Date	%Used	Current	Total	Remaining	Year To Date	Total
Revenue									
General									
01-2020.00	Motor Vehicle Tax	0.00	0.00	0.00 %	5,417.00	65,000.00	65,000.00	4,836.14	71,755.45
01-2030.00	Motor Vehicle Tax Pro-rate	0.00	0.00	0.00 %	125.00	1,500.00	1,500.00	139.38	1,629.80
01-2035.00	Motor Vehicle Fee	8,752.78	8,752.78	29.18 %	2,500.00	30,000.00	21,247.22	8,589.46	33,482.22
01-2040.00	County Road Levy	2,124.95	2,124.95	17.71 %	1,000.00	12,000.00	9,875.05	1,776.41	21,023.91
01-2050.00	Homestead Allocation	0.00	0.00	0.00 %	2,917.00	35,000.00	35,000.00	0.00	49,364.52
01-2060.00	Property Tax	89,263.42	89,263.42	9.96 %	74,662.00	895,942.00	806,678.58	69,783.67	791,643.24
01-2070.00	Bond Funds	0.00	0.00	0.00 %	375,000.00	4,500,000.00	4,500,000.00	0.00	1,504,312.20
01-2080.00	Mutual Finance Organization	0.00	0.00	0.00 %	1,000.00	12,000.00	12,000.00	0.00	13,545.08
01-2090.00	Interlocal Fire Board	0.00	0.00	0.00 %	0.00	0.00	0.00	0.00	0.00
01-2100.00	Housing Authority Tax	0.00	0.00	0.00 %	0.00	0.00	0.00	0.00	0.00
01-2200.00	Utility Transfer	49,415.67	49,415.67	8.90 %	46,250.00	555,000.00	505,584.33	44,887.49	555,315.39
01-2205.00	Utility Transfer Adm Costs	0.00	0.00	0.00 %	0.00	0.00	0.00	0.00	0.00
01-2210.00	Transfer from Utilities - Bond	0.00	0.00	0.00 %	0.00	0.00	0.00	0.00	0.00
01-2210.10	Transfer from Bond Fund	0.00	0.00	0.00 %	0.00	0.00	0.00	0.00	0.00
01-2300.00	Equalization Payment	0.00	0.00	0.00 %	13,342.00	160,105.00	160,105.00	0.00	181,011.27
01-2301.00	Government Subdisivion Aid	0.00	0.00	0.00 %	0.00	0.00	0.00	0.00	0.00
01-2302.00	MIRF	0.00	0.00	0.00 %	0.00	0.00	0.00	0.00	0.00
01-2303.00	Sales Tax Income .5%	35,495.49	35,495.49	9.86 %	30,000.00	360,000.00	324,504.51	25,509.20	395,144.86
01-2303.10	Sales Tax Income 1%	70,990.97	70,990.97	10.14 %	58,333.00	700,000.00	629,009.03	51,018.41	790,289.71
01-2303.20	Sales Tax Motor Vehicle .5%	8,491.66	8,491.66	9.44 %	7,500.00	90,000.00	81,508.34	10,210.56	109,409.55
01-2303.30	Sales Tax Motor Vehicle 1%	0.00	0.00	0.00 %	0.00	0.00	0.00	0.00	0.00
01-2400.00	Telecommunications Tax	5,158.73	5,158.73	12.90 %	3,333.00	40,000.00	34,841.27	6,889.14	37,191.88
01-2400.10	KENO Proceeds	393.58	393.58	2.62 %	1,250.00	15,000.00	14,606.42	213.59	11,207.25
01-2400.20	Hotel/Motel Occupation Tax	4,547.24	4,547.24	10.83 %	3,500.00	42,000.00	37,452.76	5,113.67	44,424.12
01-2401.00	Franchise Tax	0.00	0.00	0.00 %	2,583.00	31,000.00	31,000.00	0.00	31,954.73
01-2401.10	Lease Payments/Tower Rent	0.00	0.00	0.00 %	333.00	4,000.00	4,000.00	440.00	5,280.00
01-2402.00	Fees/Permits/Licenses	65.00	65.00	0.43 %	1,250.00	15,000.00	14,935.00	3,120.00	24,535.00
01-2404.00	Publication Reimbursements	0.00	0.00	0.00 %	0.00	0.00	0.00	0.00	140.16
01-2405.00	Miscellaneous Reimbursements	6,611.88	6,611.88	66.12 %	833.00	10,000.00	3,388.12	2,256.48	30,704.04
01-2406.00	Gifts/Donations/Memorials	0.00	0.00	0.00 %	0.00	0.00	0.00	0.00	0.00
01-2407.00	Interest Income	155.31	155.31	3.11 %	417.00	5,000.00	4,844.69	239.51	4,090.09
01-2408.00	Miscellaneous Income	12.00	12.00	0.00 %	0.00	0.00	(12.00)	0.00	22,651.01
01-2410.01	Grant Funds - Park Trail	0.00	0.00	0.00 %	0.00	0.00	0.00	0.00	301,573.14
TOTAL Revenue		281,478.68	281,478.68	3.71 %	631,545.00	7,578,547.00	7,297,068.32	235,023.11	5,031,678.62

Expense**General**

01-3101.00	Salaries	10,863.38	10,863.38	7.01 %	12,917.00	155,000.00	144,136.62	10,286.46	149,658.50
01-3102.00	FICA/Medicare	779.59	779.59	6.58 %	988.00	11,850.00	11,070.41	740.41	10,854.28
01-3103.00	Pension	338.16	338.16	4.28 %	658.00	7,900.00	7,561.84	133.00	3,879.04
01-3104.00	Health Insurance	3,090.78	3,090.78	7.73 %	3,333.00	40,000.00	36,909.22	0.00	37,164.17
01-3202.00	Education and Training	0.00	0.00	0.00 %	583.00	7,000.00	7,000.00	0.00	1,614.00
01-3205.00	Travel & Meeting Expense	1,259.70	1,259.70	12.60 %	833.00	10,000.00	8,740.30	1,026.13	10,883.85
01-3205.01	Admin. Mileage Reimb	0.00	0.00	0.00 %	0.00	0.00	0.00	0.00	0.00
01-3205.02	Admin. Housing Reimb	0.00	0.00	0.00 %	0.00	0.00	0.00	0.00	0.00
01-3205.03	Employee Expenses	0.00	0.00	0.00 %	83.00	1,000.00	1,000.00	0.00	722.00
01-3206.00	Association Dues	160.00	160.00	1.78 %	750.00	9,000.00	8,840.00	5,548.50	8,263.00

City of Broken Bow

Account	Account Name	Fiscal Year 17 - 18			Budget			Fiscal Year 16 - 17	
		Current	Year To Date	%Used	Current	Total	Remaining	Year To Date	Total
Expense (Continued)									
General									
01-3207.00	Bonds & Insurance	128,605.20	128,605.20	99.69 %	10,750.00	129,000.00	394.80	118,098.30	124,401.50
01-3208.00	Audit Expense	0.00	0.00	0.00 %	1,167.00	14,000.00	14,000.00	0.00	11,530.00
01-3209.00	Printing & Publication	303.74	303.74	6.07 %	417.00	5,000.00	4,696.26	362.11	4,319.65
01-3210.00	Longevity Pay	0.00	0.00	0.00 %	0.00	0.00	0.00	0.00	0.00
01-3211.00	Election Expense	0.00	0.00	0.00 %	17.00	200.00	200.00	0.00	2,325.00
01-3212.00	City Promotions	5,645.21	5,645.21	13.44 %	3,500.00	42,000.00	36,354.79	10,429.86	31,809.85
01-3212.10	KENO Taxes	0.00	0.00	0.00 %	0.00	0.00	0.00	0.00	0.00
01-3212.20	KENO Expenses	0.00	0.00	0.00 %	0.00	0.00	0.00	0.00	0.00
01-3213.00	Weather Station Expense	24.36	24.36	8.12 %	25.00	300.00	275.64	20.95	268.48
01-3214.00	Legal Fees	3,691.00	3,691.00	10.55 %	2,917.00	35,000.00	31,309.00	6,962.00	53,920.07
01-3214.10	Engineering Fees	0.00	0.00	0.00 %	208.00	2,500.00	2,500.00	0.00	1,575.00
01-3214.20	Contracted Services	0.00	0.00	0.00 %	0.00	0.00	0.00	0.00	0.00
01-3215.00	Contingency	0.00	0.00	0.00 %	0.00	0.00	0.00	0.00	0.00
01-3216.00	Copier Maint/Expense	467.53	467.53	7.79 %	500.00	6,000.00	5,532.47	350.03	6,469.22
01-3216.10	Software Fees	0.00	0.00	0.00 %	167.00	2,000.00	2,000.00	0.00	1,819.06
01-3217.00	Radio Communications	13,184.14	13,184.14	8.33 %	13,184.00	158,210.00	145,025.86	10,387.49	124,649.88
01-3218.00	Pension Administration	0.00	0.00	0.00 %	0.00	0.00	0.00	0.00	0.00
01-3221.00	Telephone/Internet	247.96	247.96	6.20 %	333.00	4,000.00	3,752.04	282.82	3,067.53
01-3222.00	Miscellaneous Expense	0.00	0.00	0.00 %	167.00	2,000.00	2,000.00	0.00	1,629.77
01-3223.00	Supplies & Postage	24.19	24.19	0.48 %	417.00	5,000.00	4,975.81	577.16	3,991.51
01-3223.10	Bank Fees	2.00	2.00	2.00 %	8.00	100.00	98.00	0.00	148.34
01-3223.20	Filing Fees	0.00	0.00	0.00 %	42.00	500.00	500.00	0.00	111.75
01-3224.00	Sales Tax Infra Projects	0.00	0.00	0.00 %	0.00	0.00	0.00	0.00	0.00
01-3224.01	Aquatic Facility	0.00	0.00	0.00 %	0.00	0.00	0.00	0.00	0.00
01-3224.02	Wayside Horns	0.00	0.00	0.00 %	0.00	0.00	0.00	0.00	0.00
01-3224.03	TE Trail Project	0.00	0.00	0.00 %	0.00	0.00	0.00	0.00	0.00
01-3224.04	Sales Tax Bond Project	0.00	0.00	0.00 %	0.00	0.00	0.00	0.00	0.00
01-3224.05	Sidewalk Repairs City Square	0.00	0.00	0.00 %	0.00	0.00	0.00	0.00	0.00
01-3224.06	5th Street Improvement	0.00	0.00	0.00 %	0.00	0.00	0.00	0.00	0.00
01-3224.07	Indian Hills Project	0.00	0.00	0.00 %	0.00	0.00	0.00	0.00	0.00
01-3224.08	East Lift Station	0.00	0.00	0.00 %	0.00	0.00	0.00	0.00	0.00
01-3224.09	Downtown Improvements	0.00	0.00	0.00 %	0.00	0.00	0.00	0.00	0.00
01-3320.00	Interest	0.00	0.00	0.00 %	0.00	0.00	0.00	0.00	0.00
01-3409.00	Airport Monthly Payment	1,083.33	1,083.33	8.33 %	1,083.00	13,000.00	11,916.67	1,083.33	13,000.00
01-3410.00	Equipment Purchases	0.00	0.00	0.00 %	42.00	500.00	500.00	0.00	105.48
01-3420.00	Sinking Fund/Future Purchases	0.00	0.00	0.00 %	0.00	0.00	0.00	0.00	0.00
TOTAL Expense		169,770.27	169,770.27	25.68 %	55,089.00	661,060.00	491,289.73	166,288.55	608,180.93

PROFIT / (LOSS) :

111,708.41	111,708.41	576,456.00	6,917,487.00	6,805,778.59	68,734.56	4,423,497.69
------------	------------	------------	--------------	--------------	-----------	--------------

City of Broken Bow

Account	Account Name	Fiscal Year 17 - 18			Budget			Fiscal Year 16 - 17	
		Current	Year To Date	%Used	Current	Total	Remaining	Year To Date	Total
Revenue									
Municipal Building									
02-2304.00	Municipal Building Rentals	2,250.00	2,250.00	22.50 %	833.00	10,000.00	7,750.00	1,105.00	10,680.00
TOTAL Revenue		2,250.00	2,250.00	22.50 %	833.00	10,000.00	7,750.00	1,105.00	10,680.00
Expense									
Municipal Building									
02-3101.00	Salaries	0.00	0.00	0.00 %	0.00	0.00	0.00	0.00	0.00
02-3102.00	FICA/Medicare	0.00	0.00	0.00 %	0.00	0.00	0.00	0.00	0.00
02-3103.00	Pension	0.00	0.00	0.00 %	0.00	0.00	0.00	0.00	0.00
02-3104.00	Health Insurance	0.00	0.00	0.00 %	0.00	0.00	0.00	0.00	0.00
02-3205.00	Travel & Meeting Expense	139.10	139.10	0.00 %	0.00	0.00	(139.10)	0.00	0.00
02-3216.00	Copier Maint/Expense	0.00	0.00	0.00 %	0.00	0.00	0.00	0.00	0.00
02-3219.00	Trash Removal	0.00	0.00	0.00 %	0.00	0.00	0.00	0.00	0.00
02-3220.00	Utilities	720.46	720.46	5.54 %	1,083.00	13,000.00	12,279.54	858.29	11,780.94
02-3221.00	Telephone/Internet	0.00	0.00	0.00 %	0.00	0.00	0.00	0.00	0.00
02-3222.00	Miscellaneous Expense	0.00	0.00	0.00 %	0.00	0.00	0.00	0.00	0.00
02-3223.00	Supplies & Postage	0.00	0.00	0.00 %	42.00	500.00	500.00	0.00	142.76
02-3223.01	Building Cleaning Supplies	294.89	294.89	14.74 %	167.00	2,000.00	1,705.11	153.72	1,989.49
02-3310.00	Maint/Repair Equipment	0.00	0.00	0.00 %	125.00	1,500.00	1,500.00	0.00	633.04
02-3311.00	Maintenance & Repair Bldg	197.09	197.09	0.44 %	3,750.00	45,000.00	44,802.91	0.00	10,506.51
02-3410.00	Equipment Purchases	0.00	0.00	0.00 %	333.00	4,000.00	4,000.00	0.00	1,068.80
02-3419.01	Contracted Services	750.00	750.00	8.33 %	750.00	9,000.00	8,250.00	750.00	8,780.00
02-3420.00	Sinking Fund/Future Purchases	0.00	0.00	0.00 %	0.00	0.00	0.00	0.00	0.00
TOTAL Expense		2,101.54	2,101.54	2.80 %	6,250.00	75,000.00	72,898.46	1,762.01	34,901.54
PROFIT / (LOSS) :									
		148.46	148.46		(5,417.00)	(65,000.00)	(65,148.46)	(657.01)	(24,221.54)

City of Broken Bow

Account	Account Name	Fiscal Year 17 - 18			Budget			Fiscal Year 16 - 17	
		Current	Year To Date	%Used	Current	Total	Remaining	Year To Date	Total
Revenue									
Handi Bus									
03-2409.00	Passenger Contributions	0.00	0.00	0.00 %	100.00	1,200.00	1,200.00	110.00	1,238.00
03-2410.00	Grant Reimbursement	0.00	0.00	0.00 %	3,750.00	45,000.00	45,000.00	0.00	44,910.00
TOTAL Revenue		0.00	0.00	0.00 %	3,850.00	46,200.00	46,200.00	110.00	46,148.00
Expense									
Handi Bus									
03-3101.00	Salaries	2,739.65	2,739.65	7.72 %	2,958.00	35,500.00	32,760.35	2,538.40	32,255.27
03-3102.00	FICA/Medicare	188.89	188.89	6.94 %	227.00	2,720.00	2,531.11	177.48	2,233.26
03-3103.00	Pension	136.14	136.14	7.67 %	148.00	1,775.00	1,638.86	130.16	1,726.40
03-3104.00	Health Insurance	1,616.14	1,616.14	8.30 %	1,622.00	19,465.00	17,848.86	0.00	18,478.65
03-3207.00	Bonds & Insurance	0.00	0.00	0.00 %	67.00	800.00	800.00	0.00	540.00
03-3216.00	Copier Maint/Expense	0.00	0.00	0.00 %	0.00	0.00	0.00	0.00	0.00
03-3220.00	Utilities	0.00	0.00	0.00 %	67.00	800.00	800.00	0.00	500.00
03-3221.00	Telephone/Internet	100.70	100.70	8.39 %	100.00	1,200.00	1,099.30	93.75	1,135.90
03-3222.00	Miscellaneous Expense	0.00	0.00	0.00 %	0.00	0.00	0.00	0.00	65.00
03-3223.00	Supplies & Postage	0.00	0.00	0.00 %	4.00	50.00	50.00	0.00	23.95
03-3225.00	Gas and Oil	457.42	457.42	10.16 %	375.00	4,500.00	4,042.58	305.53	3,950.49
03-3226.00	Tires	0.00	0.00	0.00 %	0.00	0.00	0.00	0.00	0.00
03-3310.00	Maint/Repair Equipment	74.40	74.40	2.48 %	250.00	3,000.00	2,925.60	0.00	1,219.83
03-3410.00	Equipment Purchases	0.00	0.00	0.00 %	0.00	0.00	0.00	0.00	0.00
03-3420.00	Sinking Fund/Future Purchases	0.00	0.00	0.00 %	0.00	0.00	0.00	0.00	0.00
TOTAL Expense		5,313.34	5,313.34	7.61 %	5,818.00	69,810.00	64,496.66	3,245.32	62,128.75
PROFIT / (LOSS) :		(5,313.34)	(5,313.34)		(1,968.00)	(23,610.00)	(18,296.66)	(3,135.32)	(15,980.75)

City of Broken Bow

Account	Account Name	Fiscal Year 17 - 18			Budget			Fiscal Year 16 - 17	
		Current	Year To Date	%Used	Current	Total	Remaining	Year To Date	Total
Revenue									
Police									
04-2406.00	Gifts/Donations/Memorials	0.00	0.00	0.00 %	0.00	0.00	0.00	0.00	9,900.00
04-2410.00	Grant Reimbursement	0.00	0.00	0.00 %	0.00	0.00	0.00	0.00	22,075.07
04-2411.00	Pound Fees	0.00	0.00	0.00 %	0.00	0.00	0.00	0.00	0.00
04-2412.00	Dog Licenses	0.00	0.00	0.00 %	50.00	600.00	600.00	70.00	405.00
04-2412.10	Permits	0.00	0.00	0.00 %	17.00	200.00	200.00	0.00	170.00
04-2413.00	Fines	0.00	0.00	0.00 %	29.00	350.00	350.00	0.00	315.00
04-2414.00	Citation Fines	0.00	0.00	0.00 %	38.00	450.00	450.00	125.00	380.00
TOTAL Revenue		0.00	0.00	0.00 %	134.00	1,600.00	1,600.00	195.00	33,245.07
Expense									
Police									
04-3101.00	Salaries	33,080.41	33,080.41	7.97 %	34,575.00	414,900.00	381,819.59	29,236.00	393,164.98
04-3101.01	Overtime Wages	0.00	0.00	0.00 %	375.00	4,500.00	4,500.00	0.00	0.00
04-3102.00	FICA/Medicare	2,385.06	2,385.06	7.50 %	2,650.00	31,800.00	29,414.94	2,106.49	28,510.42
04-3103.00	Pension	1,146.76	1,146.76	5.01 %	1,908.00	22,900.00	21,753.24	1,022.41	15,032.99
04-3104.00	Health Insurance	7,416.56	7,416.56	8.33 %	7,417.00	89,000.00	81,583.44	0.00	70,488.40
04-3205.00	Travel & Meeting Expense	1,119.74	1,119.74	24.88 %	375.00	4,500.00	3,380.26	302.37	558.34
04-3206.00	Association Dues	90.00	90.00	45.00 %	17.00	200.00	110.00	30.00	120.00
04-3207.00	Bonds & Insurance	0.00	0.00	0.00 %	8.00	100.00	100.00	0.00	0.00
04-3209.00	Printing & Publication	70.00	70.00	20.00 %	29.00	350.00	280.00	0.00	131.58
04-3216.00	Copier Maint/Expense	111.26	111.26	8.24 %	112.00	1,350.00	1,238.74	111.26	1,335.12
04-3220.00	Utilities	107.69	107.69	4.90 %	183.00	2,200.00	2,092.31	69.94	1,875.65
04-3221.00	Telephone/Internet	324.52	324.52	5.90 %	458.00	5,500.00	5,175.48	323.58	7,126.39
04-3222.00	Miscellaneous Expense	0.00	0.00	0.00 %	0.00	0.00	0.00	0.00	0.00
04-3223.00	Supplies & Postage	22.57	22.57	1.03 %	183.00	2,200.00	2,177.43	63.61	2,751.99
04-3225.00	Gas and Oil	568.04	568.04	5.98 %	792.00	9,500.00	8,931.96	643.78	7,954.61
04-3310.00	Maint/Repair Equipment	221.28	221.28	4.92 %	375.00	4,500.00	4,278.72	20.00	4,621.29
04-3311.00	Maintenance & Repair Bldg	0.00	0.00	0.00 %	67.00	800.00	800.00	0.00	254.54
04-3312.00	Uniforms	0.00	0.00	0.00 %	250.00	3,000.00	3,000.00	9.00	2,119.01
04-3313.00	Training	186.23	186.23	0.00 %	0.00	0.00	(186.23)	0.00	2,656.03
04-3314.00	Police Officer Expense	0.00	0.00	0.00 %	33.00	400.00	400.00	0.00	0.00
04-3315.00	Dog Care	97.32	97.32	6.95 %	117.00	1,400.00	1,302.68	51.14	1,311.44
04-3316.00	Grant Expenses	0.00	0.00	0.00 %	0.00	0.00	0.00	0.00	0.00
04-3410.00	Equipment Purchases	0.00	0.00	0.00 %	2,333.00	28,000.00	28,000.00	0.00	3,573.25
04-3411.00	Computers	0.00	0.00	0.00 %	333.00	4,000.00	4,000.00	0.00	3,915.53
04-3412.00	Vests	0.00	0.00	0.00 %	100.00	1,200.00	1,200.00	0.00	(77.06)
04-3413.00	Radios	0.00	0.00	0.00 %	62.00	750.00	750.00	99.75	2,006.17
04-3414.00	Guns	0.00	0.00	0.00 %	83.00	1,000.00	1,000.00	0.00	1,838.89
04-3420.00	Sinking Fund/Future Purchases	0.00	0.00	0.00 %	0.00	0.00	0.00	0.00	0.00
04-3437.00	Arrest Related Expense	0.00	0.00	0.00 %	42.00	500.00	500.00	0.00	0.00
TOTAL Expense		46,947.44	46,947.44	7.40 %	52,877.00	634,550.00	587,602.56	34,089.33	551,269.56

City of Broken Bow

Account	Account Name	Fiscal Year 17 - 18			Budget			Fiscal Year 16 - 17	
		Current	Year To Date	%Used	Current	Total	Remaining	Year To Date	Total
PROFIT / (LOSS) :		(46,947.44)	(46,947.44)		(52,743.00)	(632,950.00)	(586,002.56)	(33,894.33)	(518,024.49)
Revenue									
Rescue Unit									
05-2408.00	Miscellaneous Income	0.00	0.00	0.00 %	0.00	0.00	0.00	0.00	0.00
05-2415.00	Ambulance Service	6,939.87	6,939.87	10.06 %	5,750.00	69,000.00	62,060.13	3,752.41	68,234.26
TOTAL Revenue		6,939.87	6,939.87	10.06 %	5,750.00	69,000.00	62,060.13	3,752.41	68,234.26
Expense									
Rescue Unit									
05-3101.00	Salaries	1,420.80	1,420.80	7.69 %	1,539.00	18,471.00	17,050.20	1,384.20	18,414.70
05-3102.00	FICA/Medicare	96.38	96.38	6.81 %	118.00	1,415.00	1,318.62	95.48	1,328.65
05-3103.00	Pension	78.14	78.14	7.66 %	85.00	1,020.00	941.86	76.12	1,012.67
05-3104.00	Health Insurance	808.07	808.07	8.30 %	811.00	9,735.00	8,926.93	0.00	9,248.91
05-3205.00	Travel & Meeting Expense	0.00	0.00	0.00 %	21.00	250.00	250.00	0.00	0.00
05-3206.00	Association Dues	0.00	0.00	0.00 %	21.00	250.00	250.00	0.00	0.00
05-3209.00	Printing & Publication	0.00	0.00	0.00 %	6.00	75.00	75.00	0.00	34.00
05-3216.00	Copier Maint/Expense	0.00	0.00	0.00 %	4.00	50.00	50.00	0.00	0.00
05-3221.00	Telephone/Internet	74.72	74.72	4.98 %	125.00	1,500.00	1,425.28	40.01	784.25
05-3222.00	Miscellaneous Expense	0.00	0.00	0.00 %	0.00	0.00	0.00	0.00	0.00
05-3223.00	Supplies & Postage	26.99	26.99	4.50 %	50.00	600.00	573.01	5.67	401.59
05-3223.01	Building Cleaning Supplies	0.00	0.00	0.00 %	17.00	200.00	200.00	47.18	112.93
05-3225.00	Gas and Oil	36.16	36.16	2.78 %	108.00	1,300.00	1,263.84	42.01	728.64
05-3310.00	Maint/Repair Equipment	215.27	215.27	8.61 %	208.00	2,500.00	2,284.73	0.00	2,182.67
05-3313.00	Training	72.00	72.00	1.11 %	542.00	6,500.00	6,428.00	1,605.00	7,609.50
05-3330.00	Life Insurance	0.00	0.00	0.00 %	83.00	1,000.00	1,000.00	0.00	714.00
05-3332.00	Laundry	58.63	58.63	19.54 %	25.00	300.00	241.37	13.51	234.28
05-3334.00	Ambulance Driver Incentive	1,045.00	1,045.00	8.71 %	1,000.00	12,000.00	10,955.00	1,630.00	10,758.75
05-3335.00	EMT Trip Fees	0.00	0.00	0.00 %	0.00	0.00	0.00	0.00	0.00
05-3336.00	Insurance Aid Fees	0.00	0.00	0.00 %	1,250.00	15,000.00	15,000.00	1,508.50	14,938.27
05-3338.00	Ambulance Supplies	51.73	51.73	0.69 %	625.00	7,500.00	7,448.27	0.00	5,931.03
05-3361.00	Uniforms	0.00	0.00	0.00 %	42.00	500.00	500.00	0.00	223.22
05-3410.00	Equipment Purchases	0.00	0.00	0.00 %	2,083.00	25,000.00	25,000.00	10,854.20	22,833.97
05-3420.00	Sinking Fund/Future Purchases	0.00	0.00	0.00 %	0.00	0.00	0.00	0.00	0.00
TOTAL Expense		3,983.89	3,983.89	3.79 %	8,763.00	105,166.00	101,182.11	17,301.88	97,492.03
PROFIT / (LOSS) :		2,955.98	2,955.98		(3,013.00)	(36,166.00)	(39,121.98)	(13,549.47)	(29,257.77)

City of Broken Bow

Account	Account Name	Fiscal Year 17 - 18			Budget			Fiscal Year 16 - 17	
		Current	Year To Date	%Used	Current	Total	Remaining	Year To Date	Total
Revenue									
Fire									
06-2403.00	Insurance Reimbursements	0.00	0.00	0.00 %	0.00	0.00	0.00	0.00	0.00
06-2405.00	Miscellaneous Reimbursements	0.00	0.00	0.00 %	0.00	0.00	0.00	0.00	0.00
06-2406.00	Gifts/Donations/Memorials	0.00	0.00	0.00 %	0.00	0.00	0.00	0.00	0.00
06-2408.00	Miscellaneous Income	0.00	0.00	0.00 %	0.00	0.00	0.00	0.00	0.00
06-2410.00	Grant Reimbursement	0.00	0.00	0.00 %	0.00	0.00	0.00	0.00	0.00
06-2416.00	Rural Fire Protection	0.00	0.00	0.00 %	0.00	0.00	0.00	0.00	0.00
TOTAL Revenue		0.00	0.00	0.00 %	0.00	0.00	0.00	0.00	0.00

Expense

Fire									
06-3101.00	Salaries	1,420.80	1,420.80	7.69 %	1,539.00	18,471.00	17,050.20	1,359.20	17,819.20
06-3102.00	FICA/Medicare	96.40	96.40	6.81 %	118.00	1,415.00	1,318.60	93.78	1,224.78
06-3103.00	Pension	78.14	78.14	7.66 %	85.00	1,020.00	941.86	74.76	980.13
06-3104.00	Health Insurance	808.07	808.07	8.30 %	811.00	9,735.00	8,926.93	0.00	9,229.74
06-3205.00	Travel & Meeting Expense	0.00	0.00	0.00 %	42.00	500.00	500.00	0.00	0.00
06-3209.00	Printing & Publication	0.00	0.00	0.00 %	8.00	100.00	100.00	0.00	34.00
06-3216.00	Copier Maint/Expense	0.00	0.00	0.00 %	0.00	0.00	0.00	0.00	0.00
06-3219.00	Trash Removal	0.00	0.00	0.00 %	0.00	0.00	0.00	0.00	0.00
06-3220.00	Utilities	642.67	642.67	6.43 %	833.00	10,000.00	9,357.33	645.65	9,352.00
06-3221.00	Telephone/Internet	49.45	49.45	5.49 %	75.00	900.00	850.55	30.02	534.66
06-3222.00	Miscellaneous Expense	0.00	0.00	0.00 %	0.00	0.00	0.00	0.00	0.00
06-3223.00	Supplies & Postage	76.93	76.93	15.39 %	42.00	500.00	423.07	0.00	486.07
06-3225.00	Gas and Oil	54.01	54.01	3.38 %	133.00	1,600.00	1,545.99	0.00	1,597.34
06-3310.00	Maint/Repair Equipment	2,109.30	2,109.30	21.09 %	833.00	10,000.00	7,890.70	900.00	7,530.63
06-3310.01	Main/Rep Equip-Loose Equipment	442.58	442.58	11.06 %	333.00	4,000.00	3,557.42	0.00	1,221.74
06-3311.00	Maintenance & Repair Bldg	17.15	17.15	1.72 %	83.00	1,000.00	982.85	103.77	939.57
06-3313.00	Training	0.00	0.00	0.00 %	125.00	1,500.00	1,500.00	0.00	1,448.60
06-3330.00	Life Insurance	0.00	0.00	0.00 %	58.00	700.00	700.00	0.00	0.00
06-3410.00	Equipment Purchases	0.00	0.00	0.00 %	1,667.00	20,000.00	20,000.00	0.00	21,066.42
06-3415.10	Sirens and Batteries	0.00	0.00	0.00 %	83.00	1,000.00	1,000.00	0.00	112.88
06-3420.00	Sinking Fund/Future Purchases	0.00	0.00	0.00 %	0.00	0.00	0.00	0.00	0.00
06-3435.00	Hydrants	0.00	0.00	0.00 %	500.00	6,000.00	6,000.00	0.00	0.00
TOTAL Expense		5,795.50	5,795.50	6.55 %	7,368.00	88,441.00	82,645.50	3,207.18	73,577.76

PROFIT / (LOSS) :

(5,795.50)	(5,795.50)	(7,368.00)	(88,441.00)	(82,645.50)	(3,207.18)	(73,577.76)
------------	------------	------------	-------------	-------------	------------	-------------

City of Broken Bow

Account	Account Name	Fiscal Year 17 - 18			Budget			Fiscal Year 16 - 17	
		Current	Year To Date	%Used	Current	Total	Remaining	Year To Date	Total
Revenue									
Library									
07-2406.00	Gifts/Donations/Memorials	0.00	0.00	0.00 %	64,583.00	775,000.00	775,000.00	0.00	230,000.00
07-2408.00	Miscellaneous Income	0.00	0.00	0.00 %	100.00	1,200.00	1,200.00	0.00	1,219.00
07-2417.00	Library Fees	90.00	90.00	6.00 %	125.00	1,500.00	1,410.00	186.48	1,648.91
TOTAL Revenue		90.00	90.00	0.01 %	64,808.00	777,700.00	777,610.00	186.48	232,867.91
Expense									
Library									
07-3101.00	Salaries	10,597.23	10,597.23	7.82 %	11,292.00	135,500.00	124,902.77	9,980.32	134,083.55
07-3102.00	FICA/Medicare	755.44	755.44	7.26 %	867.00	10,400.00	9,644.56	712.43	9,609.12
07-3103.00	Pension	529.00	529.00	7.56 %	583.00	7,000.00	6,471.00	513.66	6,768.33
07-3104.00	Health Insurance	1,626.98	1,626.98	8.30 %	1,633.00	19,595.00	17,968.02	0.00	18,569.87
07-3205.00	Travel & Meeting Expense	0.00	0.00	0.00 %	62.00	750.00	750.00	0.00	942.04
07-3206.00	Association Dues	0.00	0.00	0.00 %	17.00	200.00	200.00	0.00	200.00
07-3216.00	Copier Maint/Expense	88.91	88.91	4.94 %	150.00	1,800.00	1,711.09	0.00	1,407.04
07-3219.00	Trash Removal	0.00	0.00	0.00 %	0.00	0.00	0.00	0.00	0.00
07-3220.00	Utilities	695.55	695.55	6.96 %	833.00	10,000.00	9,304.45	524.80	10,734.12
07-3221.00	Telephone/Internet	900.00	900.00	53.25 %	141.00	1,690.00	790.00	117.41	1,266.76
07-3222.00	Miscellaneous Expense	0.00	0.00	0.00 %	0.00	0.00	0.00	0.00	0.00
07-3223.00	Supplies & Postage	24.99	24.99	1.19 %	175.00	2,100.00	2,075.01	514.04	1,968.18
07-3310.00	Maint/Repair Equipment	0.00	0.00	0.00 %	0.00	0.00	0.00	0.00	0.00
07-3310.10	Tech Support/Subscriptions	0.00	0.00	0.00 %	142.00	1,700.00	1,700.00	0.00	1,689.62
07-3311.00	Maintenance & Repair Bldg	47.00	47.00	3.62 %	108.00	1,300.00	1,253.00	44.80	2,080.20
07-3313.00	Training	520.00	520.00	57.78 %	75.00	900.00	380.00	400.00	493.83
07-3339.00	Maintenance/Repair Grounds	0.00	0.00	0.00 %	0.00	0.00	0.00	0.00	0.00
07-3340.00	Book Purchases	4,185.16	4,185.16	15.50 %	2,250.00	27,000.00	22,814.84	4,434.57	24,900.09
07-3340.10	Database	0.00	0.00	0.00 %	73.00	875.00	875.00	0.00	872.31
07-3340.20	Nebraska Overdrive	500.00	500.00	100.00 %	42.00	500.00	0.00	0.00	500.00
07-3341.00	Computer Public Access	0.00	0.00	0.00 %	0.00	0.00	0.00	425.00	850.00
07-3342.00	Library Promotions	0.00	0.00	0.00 %	17.00	200.00	200.00	100.00	195.00
07-3410.00	Equipment Purchases	0.00	0.00	0.00 %	83.00	1,000.00	1,000.00	88.91	892.22
07-3419.01	Contracted Services	450.00	450.00	8.33 %	450.00	5,400.00	4,950.00	300.00	4,687.50
07-3420.00	Sinking Fund/Future Purchases	0.00	0.00	0.00 %	0.00	0.00	0.00	0.00	0.00
TOTAL Expense		20,920.26	20,920.26	9.18 %	18,993.00	227,910.00	206,989.74	18,155.94	222,709.78
PROFIT / (LOSS) :		(20,830.26)	(20,830.26)		45,815.00	549,790.00	570,620.26	(17,969.46)	10,158.13

City of Broken Bow

Account	Account Name	Fiscal Year 17 - 18			Budget			Fiscal Year 16 - 17	
		Current	Year To Date	%Used	Current	Total	Remaining	Year To Date	Total
Revenue									
Street									
08-2405.00	Miscellaneous Reimbursements	145.00	145.00	0.00 %	0.00	0.00	(145.00)	0.00	1,440.00
08-2408.10	Grant Funds	0.00	0.00	0.00 %	0.00	0.00	0.00	0.00	0.00
08-2408.20	Sales Tax Infra Transfer	0.00	0.00	0.00 %	0.00	0.00	0.00	0.00	0.00
08-2418.00	Street Allocation	35,237.93	35,237.93	8.38 %	35,035.00	420,419.00	385,181.07	34,231.29	411,951.78
08-2419.00	Incentive Payment	0.00	0.00	0.00 %	333.00	4,000.00	4,000.00	0.00	4,000.00
08-2421.00	Box Culvert Reimbursement	0.00	0.00	0.00 %	0.00	0.00	0.00	0.00	0.00
08-2422.00	Road Material Reimbursement	0.00	0.00	0.00 %	0.00	0.00	0.00	0.00	0.00
08-2424.00	Equipment Rental Fees	0.00	0.00	0.00 %	0.00	0.00	0.00	0.00	0.00
TOTAL Revenue		35,382.93	35,382.93	8.34 %	35,368.00	424,419.00	389,036.07	34,231.29	417,391.78
Expense									
Street									
08-3101.00	Salaries	19,041.94	19,041.94	7.69 %	20,627.00	247,520.00	228,478.06	16,381.36	240,982.39
08-3101.01	Overtime Wages	0.00	0.00	0.00 %	333.00	4,000.00	4,000.00	0.00	0.00
08-3102.00	FICA/Medicare	1,382.28	1,382.28	7.29 %	1,579.00	18,950.00	17,567.72	1,180.86	17,262.73
08-3103.00	Pension	1,047.34	1,047.34	7.69 %	1,135.00	13,620.00	12,572.66	900.97	13,230.19
08-3104.00	Health Insurance	5,356.15	5,356.15	7.37 %	6,060.00	72,720.00	67,363.85	0.00	63,960.36
08-3205.00	Travel & Meeting Expense	0.00	0.00	0.00 %	67.00	800.00	800.00	0.00	427.39
08-3206.00	Association Dues	0.00	0.00	0.00 %	42.00	500.00	500.00	0.00	470.00
08-3216.00	Copier Maint/Expense	0.00	0.00	0.00 %	0.00	0.00	0.00	0.00	0.00
08-3219.00	Trash Removal	0.00	0.00	0.00 %	12.00	150.00	150.00	0.00	0.00
08-3220.00	Utilities	212.26	212.26	1.52 %	1,167.00	14,000.00	13,787.74	252.85	12,584.02
08-3221.00	Telephone/Internet	106.88	106.88	5.78 %	154.00	1,850.00	1,743.12	78.84	1,322.38
08-3222.00	Miscellaneous Expense	0.00	0.00	0.00 %	12.00	150.00	150.00	0.00	153.26
08-3222.10	Snow Removal	0.00	0.00	0.00 %	1,667.00	20,000.00	20,000.00	0.00	13,130.71
08-3223.00	Supplies & Postage	60.84	60.84	6.08 %	83.00	1,000.00	939.16	0.00	958.29
08-3225.00	Gas and Oil	982.76	982.76	4.68 %	1,750.00	21,000.00	20,017.24	1,724.25	13,928.74
08-3310.00	Maint/Repair Equipment	7,439.07	7,439.07	14.88 %	4,167.00	50,000.00	42,560.93	11,658.22	46,620.56
08-3311.00	Maintenance & Repair Bldg	545.84	545.84	18.19 %	250.00	3,000.00	2,454.16	1,977.68	4,304.05
08-3320.00	Interest	0.00	0.00	0.00 %	0.00	0.00	0.00	0.00	0.00
08-3343.00	Consulting Fees	0.00	0.00	0.00 %	0.00	0.00	0.00	0.00	0.00
08-3344.00	Chemicals	17,451.47	17,451.47	81.17 %	1,792.00	21,500.00	4,048.53	8,175.00	21,039.24
08-3345.00	Road Materials	4,955.00	4,955.00	26.36 %	1,567.00	18,800.00	13,845.00	765.90	17,166.41
08-3346.00	Gravel	2,128.54	2,128.54	60.82 %	292.00	3,500.00	1,371.46	0.00	2,349.68
08-3347.00	Street Signs	19.95	19.95	0.57 %	292.00	3,500.00	3,480.05	365.54	3,430.61
08-3348.00	Street Signals/Maintenance	21.12	21.12	0.53 %	333.00	4,000.00	3,978.88	0.00	4,264.60
08-3349.00	Pavement Marking	0.00	0.00	0.00 %	667.00	8,000.00	8,000.00	0.00	8,105.47
08-3350.00	Shop Tools	732.80	732.80	20.94 %	292.00	3,500.00	2,767.20	0.00	3,798.71
08-3351.00	Equipment Rental	0.00	0.00	0.00 %	500.00	6,000.00	6,000.00	0.00	0.00
08-3410.00	Equipment Purchases	0.00	0.00	0.00 %	5,417.00	65,000.00	65,000.00	0.00	67,352.38
08-3410.01	Safety Equipment	400.00	400.00	16.00 %	208.00	2,500.00	2,100.00	2,074.73	3,465.31
08-3411.00	Computers	0.00	0.00	0.00 %	0.00	0.00	0.00	0.00	0.00
08-3416.00	Land & Buildings	0.00	0.00	0.00 %	83.00	1,000.00	1,000.00	0.00	3,029.50
08-3417.00	Trash Receptacles	0.00	0.00	0.00 %	625.00	7,500.00	7,500.00	0.00	0.00
08-3418.00	Street Sweeper	0.00	0.00	0.00 %	2,088.00	25,050.00	25,050.00	0.00	25,017.26
08-3420.00	Sinking Fund/Future Purchases	0.00	0.00	0.00 %	0.00	0.00	0.00	0.00	0.00
08-3422.00	New Street Lights	0.00	0.00	0.00 %	62.00	750.00	750.00	0.00	1,117.00

City of Broken Bow

Account	Account Name	Fiscal Year 17 - 18			Budget			Fiscal Year 16 - 17	
		Current	Year To Date	%Used	Current	Total	Remaining	Year To Date	Total
Expense (Continued)									
Street									
08-3423.00	Storm Sewers	0.00	0.00	0.00 %	142.00	1,700.00	1,700.00	0.00	243.80
08-3424.00	Trucks/Loader	0.00	0.00	0.00 %	3,375.00	40,500.00	40,500.00	0.00	40,489.77
08-3425.00	Street Construction	10,459.92	10,459.92	20.92 %	4,167.00	50,000.00	39,540.08	0.00	48,368.50
08-3426.00	Armor Coating	0.00	0.00	0.00 %	1,042.00	12,500.00	12,500.00	0.00	12,408.12
08-3426.10	Concrete Replacement Snow Stor	0.00	0.00	0.00 %	0.00	0.00	0.00	0.00	0.00
TOTAL Expense		72,344.16	72,344.16	9.72 %	62,049.00	744,560.00	672,215.84	45,536.20	690,981.43
PROFIT / (LOSS) :		(36,961.23)	(36,961.23)		(26,681.00)	(320,141.00)	(283,179.77)	(11,304.91)	(273,589.65)

City of Broken Bow

Account	Account Name	Fiscal Year 17 - 18			Budget			Fiscal Year 16 - 17	
		Current	Year To Date	%Used	Current	Total	Remaining	Year To Date	Total
Revenue									
Park									
09-2408.00	Miscellaneous Income	0.00	0.00	0.00 %	0.00	0.00	0.00	801.00	801.00
09-2425.00	Park Rental Fees	0.00	0.00	0.00 %	0.00	0.00	0.00	0.00	305.00
09-2426.00	Tennis Center Fees	0.00	0.00	0.00 %	0.00	0.00	0.00	0.00	0.00
09-2426.10	RV Park Rental Fees	2,085.50	2,085.50	11.59 %	1,500.00	18,000.00	15,914.50	1,906.90	28,386.23
09-2426.20	RV Park Rental Sales Tax	145.97	145.97	0.00 %	0.00	0.00	(145.97)	133.47	376.15
09-2426.30	RV Park Lodging Tax	68.53	68.53	0.00 %	0.00	0.00	(68.53)	59.63	73.11
TOTAL Revenue		2,300.00	2,300.00	12.78 %	1,500.00	18,000.00	15,700.00	2,901.00	29,941.49

Expense

Park									
09-3101.00	Salaries	11,240.40	11,240.40	5.85 %	16,000.00	192,000.00	180,759.60	12,560.00	128,957.96
09-3102.00	FICA/Medicare	843.58	843.58	5.74 %	1,225.00	14,700.00	13,856.42	940.72	9,712.43
09-3103.00	Pension	618.22	618.22	6.00 %	858.00	10,300.00	9,681.78	667.71	6,906.00
09-3104.00	Health Insurance	2,297.67	2,297.67	8.14 %	2,353.00	28,235.00	25,937.33	0.00	16,539.46
09-3205.00	Travel & Meeting Expense	0.00	0.00	0.00 %	17.00	200.00	200.00	0.00	90.00
09-3206.00	Association Dues	0.00	0.00	0.00 %	8.00	100.00	100.00	0.00	45.00
09-3209.00	Printing & Publication	0.00	0.00	0.00 %	8.00	100.00	100.00	0.00	0.00
09-3216.00	Copier Maint/Expense	0.00	0.00	0.00 %	0.00	0.00	0.00	0.00	0.00
09-3219.00	Trash Removal	49.30	49.30	8.22 %	50.00	600.00	550.70	49.30	651.60
09-3220.00	Utilities	1,718.44	1,718.44	5.73 %	2,500.00	30,000.00	28,281.56	1,702.59	27,353.25
09-3221.00	Telephone/Internet	106.87	106.87	6.29 %	142.00	1,700.00	1,593.13	35.47	1,055.58
09-3222.00	Miscellaneous Expense	0.00	0.00	0.00 %	17.00	200.00	200.00	0.00	141.52
09-3223.00	Supplies & Postage	0.00	0.00	0.00 %	62.00	750.00	750.00	369.31	1,007.76
09-3225.00	Gas and Oil	520.71	520.71	6.13 %	708.00	8,500.00	7,979.29	408.48	4,542.49
09-3310.00	Maint/Repair Equipment	672.86	672.86	11.21 %	500.00	6,000.00	5,327.14	212.76	4,858.69
09-3311.00	Maintenance & Repair Bldg	251.50	251.50	4.19 %	500.00	6,000.00	5,748.50	272.76	4,768.52
09-3339.00	Maintenance/Repair Grounds	3,971.25	3,971.25	13.24 %	2,500.00	30,000.00	26,028.75	3,199.49	19,322.36
09-3351.00	Equipment Rental	0.00	0.00	0.00 %	25.00	300.00	300.00	0.00	300.00
09-3352.00	Tools/Shop Equipment	0.00	0.00	0.00 %	62.00	750.00	750.00	185.06	770.35
09-3353.00	Trees & Shrubs	0.00	0.00	0.00 %	83.00	1,000.00	1,000.00	0.00	113.40
09-3410.00	Equipment Purchases	216.51	216.51	0.50 %	3,625.00	43,500.00	43,283.49	6,114.94	32,716.53
09-3410.01	Safety Equipment	199.96	199.96	22.22 %	75.00	900.00	700.04	200.00	430.11
09-3420.00	Sinking Fund/Future Purchases	0.00	0.00	0.00 %	0.00	0.00	0.00	0.00	0.00
09-3427.00	Underground Sprinklers	0.00	0.00	0.00 %	417.00	5,000.00	5,000.00	0.00	4,125.38
09-3428.00	Playground Equipment	0.00	0.00	0.00 %	3,333.00	40,000.00	40,000.00	0.00	25,000.00
09-3429.00	Melham Playground Equipment	0.00	0.00	0.00 %	0.00	0.00	0.00	0.00	0.00
09-3430.00	Melham Lake	0.00	0.00	0.00 %	167.00	2,000.00	2,000.00	97.50	1,874.67
TOTAL Expense		22,707.27	22,707.27	5.37 %	35,235.00	422,835.00	400,127.73	27,016.09	291,283.06

PROFIT / (LOSS) :

(20,407.27)	(20,407.27)	(33,735.00)	(404,835.00)	(384,427.73)	(24,115.09)	(261,341.57)
-------------	-------------	-------------	--------------	--------------	-------------	--------------

City of Broken Bow

Account	Account Name	Fiscal Year 17 - 18			Budget			Fiscal Year 16 - 17	
		Current	Year To Date	%Used	Current	Total	Remaining	Year To Date	Total
Revenue									
Swimming Pool									
10-2427.00	Admissions	(147.00)	(147.00)	-0.57 %	2,167.00	26,000.00	26,147.00	0.00	27,538.83
10-2428.00	Concessions	0.00	0.00	0.00 %	67.00	800.00	800.00	0.00	2,838.49
10-2429.00	Red Cross Lessons	0.00	0.00	0.00 %	375.00	4,500.00	4,500.00	0.00	5,350.00
TOTAL Revenue		(147.00)	(147.00)	-0.47 %	2,609.00	31,300.00	31,447.00	0.00	35,727.32

Expense									
Swimming Pool									
10-3101.00	Salaries	0.00	0.00	0.00 %	5,583.00	67,000.00	67,000.00	116.00	71,005.50
10-3102.00	FICA/Medicare	0.00	0.00	0.00 %	427.00	5,125.00	5,125.00	8.87	5,431.99
10-3103.00	Pension	0.00	0.00	0.00 %	0.00	0.00	0.00	0.00	0.00
10-3104.00	Health Insurance	0.00	0.00	0.00 %	0.00	0.00	0.00	0.00	0.00
10-3205.00	Travel & Meeting Expense	0.00	0.00	0.00 %	21.00	250.00	250.00	0.00	229.80
10-3206.00	Association Dues	0.00	0.00	0.00 %	8.00	100.00	100.00	0.00	40.00
10-3206.10	Credit Card/POS Service Fees	0.00	0.00	0.00 %	150.00	1,800.00	1,800.00	0.00	1,629.04
10-3209.00	Printing & Publication	0.00	0.00	0.00 %	46.00	550.00	550.00	0.00	862.50
10-3216.00	Copier Maint/Expense	0.00	0.00	0.00 %	0.00	0.00	0.00	0.00	0.00
10-3219.00	Trash Removal	0.00	0.00	0.00 %	0.00	0.00	0.00	0.00	0.00
10-3220.00	Utilities	691.73	691.73	5.12 %	1,125.00	13,500.00	12,808.27	499.83	13,545.75
10-3221.00	Telephone/Internet	107.88	107.88	10.79 %	83.00	1,000.00	892.12	55.01	1,102.48
10-3222.00	Miscellaneous Expense	0.00	0.00	0.00 %	0.00	0.00	0.00	0.00	0.00
10-3223.00	Supplies & Postage	0.00	0.00	0.00 %	250.00	3,000.00	3,000.00	0.00	3,893.24
10-3310.00	Maint/Repair Equipment	0.00	0.00	0.00 %	0.00	0.00	0.00	0.00	0.00
10-3311.00	Maintenance & Repair Bldg	0.00	0.00	0.00 %	2,500.00	30,000.00	30,000.00	0.00	0.00
10-3339.00	Maintenance/Repair Grounds	839.44	839.44	9.33 %	750.00	9,000.00	8,160.56	1,000.00	8,977.83
10-3343.00	Consulting Fees	0.00	0.00	0.00 %	0.00	0.00	0.00	0.00	0.00
10-3356.00	General Main/Repair	0.00	0.00	0.00 %	0.00	0.00	0.00	0.00	0.00
10-3357.00	Maintenance/Repair Pool	0.00	0.00	0.00 %	0.00	0.00	0.00	0.00	0.00
10-3358.00	Maintenance/Repair Diving Brd	0.00	0.00	0.00 %	0.00	0.00	0.00	0.00	0.00
10-3359.00	Red Cross Training	0.00	0.00	0.00 %	250.00	3,000.00	3,000.00	0.00	1,850.00
10-3410.00	Equipment Purchases	0.00	0.00	0.00 %	333.00	4,000.00	4,000.00	0.00	4,228.72
10-3420.00	Sinking Fund/Future Purchases	0.00	0.00	0.00 %	0.00	0.00	0.00	0.00	0.00
10-3431.00	Pool & Bldg Renovations	0.00	0.00	0.00 %	0.00	0.00	0.00	0.00	0.00
10-3432.00	Pool Chemicals	0.00	0.00	0.00 %	1,083.00	13,000.00	13,000.00	0.00	14,451.20
TOTAL Expense		1,639.05	1,639.05	1.08 %	12,609.00	151,325.00	149,685.95	1,679.71	127,248.05

PROFIT / (LOSS) :

(1,786.05)

(1,786.05)

(10,000.00)

(120,025.00)

(118,238.95)

(1,679.71)

(91,520.73)

City of Broken Bow

Account	Account Name	Fiscal Year 17 - 18			Budget			Fiscal Year 16 - 17	
		Current	Year To Date	%Used	Current	Total	Remaining	Year To Date	Total
Revenue									
Sanitation									
11-2405.10	Tree Dump Gate Receipts	1,018.00	1,018.00	29.09 %	292.00	3,500.00	2,482.00	831.00	4,993.50
11-2405.20	CD Cell Gate Receipts	5,172.00	5,172.00	51.72 %	833.00	10,000.00	4,828.00	6,185.00	21,866.00
TOTAL Revenue		6,190.00	6,190.00	45.85 %	1,125.00	13,500.00	7,310.00	7,016.00	26,859.50
Expense									
Sanitation									
11-3101.00	Salaries	2,495.25	2,495.25	15.61 %	1,332.00	15,990.00	13,494.75	1,908.00	24,012.00
11-3101.10	Salaries - CD Cell	0.00	0.00	0.00 %	1,332.00	15,990.00	15,990.00	0.00	0.00
11-3102.00	FICA/Medicare	190.87	190.87	15.27 %	104.00	1,250.00	1,059.13	145.96	1,836.94
11-3102.10	FICA/Medicare - CD Cell	0.00	0.00	0.00 %	104.00	1,250.00	1,250.00	0.00	0.00
11-3103.00	Pension	0.00	0.00	0.00 %	0.00	0.00	0.00	0.00	0.00
11-3104.00	Health Insurance	0.00	0.00	0.00 %	0.00	0.00	0.00	0.00	0.00
11-3205.00	Travel & Meeting Expense	147.13	147.13	9.81 %	125.00	1,500.00	1,352.87	160.38	1,488.87
11-3216.00	Copier Maint/Expense	0.00	0.00	0.00 %	0.00	0.00	0.00	0.00	0.00
11-3221.00	Telephone/Internet	0.00	0.00	0.00 %	17.00	200.00	200.00	31.29	249.92
11-3221.10	Telephone - CD Cell	0.00	0.00	0.00 %	17.00	200.00	200.00	31.29	187.42
11-3222.00	Miscellaneous Expense	500.00	500.00	7.41 %	562.00	6,750.00	6,250.00	0.00	1,000.00
11-3223.00	Supplies & Postage	0.00	0.00	0.00 %	4.00	50.00	50.00	0.00	34.58
11-3360.00	Sanitation Contract	35.36	35.36	5.89 %	50.00	600.00	564.64	33.42	628.74
11-3360.10	Port-A-Potties	0.00	0.00	0.00 %	100.00	1,200.00	1,200.00	170.00	170.00
11-3410.00	Equipment Purchases	0.00	0.00	0.00 %	117.00	1,400.00	1,400.00	0.00	1,680.30
11-3410.10	Capital Purchases	0.00	0.00	0.00 %	0.00	0.00	0.00	0.00	0.00
11-3410.20	Equipment Rental CD Cell	0.00	0.00	0.00 %	0.00	0.00	0.00	0.00	0.00
11-3410.30	Equipment Rental Tree Dump	0.00	0.00	0.00 %	0.00	0.00	0.00	0.00	0.00
11-3416.00	Land & Buildings	294.58	294.58	19.64 %	125.00	1,500.00	1,205.42	0.00	802.95
11-3420.00	Sinking Fund/Future Purchases	0.00	0.00	0.00 %	0.00	0.00	0.00	0.00	0.00
TOTAL Expense		3,663.19	3,663.19	7.65 %	3,989.00	47,880.00	44,216.81	2,480.34	32,091.72
PROFIT / (LOSS) :		2,526.81	2,526.81		(2,864.00)	(34,380.00)	(36,906.81)	4,535.66	(5,232.22)

City of Broken Bow

Account	Account Name	Fiscal Year 17 - 18			Budget			Fiscal Year 16 - 17	
		Current	Year To Date	%Used	Current	Total	Remaining	Year To Date	Total
Expense									
ST Infra/Capital									
12-4200.00	Sales Tax Infra Projects	1,810.84	1,810.84	0.70 %	21,667.00	260,000.00	258,189.16	41,583.82	111,175.30
12-4200.01	Library	169,281.54	169,281.54	10.58 %	133,333.00	1,600,000.00	1,430,718.46	19,998.00	743,117.21
12-4200.02	TE Trail Project	0.00	0.00	0.00 %	0.00	0.00	0.00	0.00	362,599.28
12-4200.03	5th Street Improvement	0.00	0.00	0.00 %	0.00	0.00	0.00	0.00	4,460.00
12-4200.04	Ambulance	0.00	0.00	0.00 %	0.00	0.00	0.00	0.00	0.00
12-4200.05	Downtown Improvements/10th Ave	6,249.75	6,249.75	0.00 %	0.00	0.00	(6,249.75)	34,673.34	2,348,558.79
12-4200.07	Sales Tax Infra Transfer	0.00	0.00	0.00 %	0.00	0.00	0.00	0.00	0.00
12-4200.08	Fairgrounds Lift Payment	0.00	0.00	0.00 %	2,592.00	31,100.00	31,100.00	0.00	31,297.28
12-4200.09	Transfer ST to Bond Fund	0.00	0.00	0.00 %	50,362.00	604,340.00	604,340.00	0.00	240,359.00
TOTAL Expense		177,342.13	177,342.13	7.11 %	207,954.00	2,495,440.00	2,318,097.87	96,255.16	3,841,566.86

PROFIT / (LOSS) :

(177,342.13)	(177,342.13)	(207,954.00)	(2,495,440.00)	(2,318,097.87)	(96,255.16)	(3,841,566.86)
--------------	--------------	--------------	----------------	----------------	-------------	----------------

Expense

Utility Wages

13-1431.00	Salaries	0.00	0.00	0.00 %	0.00	0.00	0.00	0.00	0.00
13-1452.10	Pension	0.00	0.00	0.00 %	0.00	0.00	0.00	0.00	0.00
13-1452.20	Payroll Taxes	0.00	0.00	0.00 %	0.00	0.00	0.00	0.00	0.00
13-1452.30	Travel and Meeting Expense	0.00	0.00	0.00 %	0.00	0.00	0.00	0.00	0.00
TOTAL Expense		0.00	0.00	0.00 %	0.00	0.00	0.00	0.00	0.00

PROFIT / (LOSS) :

0.00	0.00	0.00	0.00	0.00	0.00	0.00
------	------	------	------	------	------	------

Date Range : 10/1/2017 To 10/31/2017
 Report is for 00-0000.00 through ZZ-ZZZZ.ZZ.
 Only Active accounts are included.
 Report order = fund
 Transaction Source Code = Include All

ORDINANCE NO. 2014-21

AN ORDINANCE CREATING STREET IMPROVEMENT DISTRICTS NOS. 2014-1 AND 2014-2 IN THE CITY OF BROKEN BOW, NEBRASKA, ORDERING THE CONSTRUCTION OF STREET IMPROVEMENTS THEREIN AND ORDERING THE PUBLICATION OF THE ORDINANCE IN PAMPHLET FORM.

BE IT ORDAINED BY THE MAYOR AND COUNCIL OF THE CITY OF BROKEN BOW, NEBRASKA, as follows:

Section 1. That there be and hereby are created in the City of Broken Bow, Nebraska, street improvement districts to be known and designated as Street Improvement Districts Nos. 2014-1 and 2014-2 of the City of Broken Bow, Nebraska.

Section 2. That the outer boundaries of Street Improvement District No. 2014-1 shall include, in addition to the streets to be improved, all of the following described property to-wit:

A PARCEL OF LAND LOCATED IN THE CITY OF BROKEN BOW, CUSTER COUNTY, NEBRASKA, ALSO BEING IN THE NORTHEAST AND SOUTHEAST QUARTERS OF SECTION 32, TOWNSHIP 17 NORTH, RANGE 20 WEST OF THE SIXTH P.M., CUSTER COUNTY, NEBRASKA, BEING MORE PARTICULARLY DESCRIBED AS FOLLOWS: BEGINNING AT THE SOUTHWEST CORNER OF LOT 10, BLOCK 98 OF RAILROAD ADDITION TO THE CITY OF BROKEN BOW, THENCE SOUTHERLY, A DISTANCE OF 80 FEET, MORE OR LESS, TO THE NORTHWEST CORNER OF LOT 1, BLOCK 103 OF SAID RAILROAD ADDITION, THENCE SOUTHERLY ON THE WEST LINE OF LOTS 1 THROUGH 5 INCLUSIVE, OF SAID BLOCK 103, A DISTANCE OF 128 FEET, MORE OR LESS, TO THE SOUTHWEST CORNER OF SAID LOT 5, THENCE SOUTHERLY, A DISTANCE OF 600 FEET, MORE OR LESS, TO THE NORTHWEST CORNER OF LOT 7, BLOCK 22 OF ORIGINAL TOWN AS PLATTED IN THE CITY OF BROKEN BOW, THENCE SOUTHERLY ON THE WEST LINE OF LOTS 7 AND 2 INCLUSIVE, A DISTANCE OF 224 FEET, MORE OR LESS, TO THE SOUTHWEST CORNER OF SAID LOT 2, THENCE SOUTHERLY, A DISTANCE OF 80 FEET, MORE OR LESS, TO THE NORTHEAST CORNER OF LOT 12, BLOCK 11 OF SAID ORIGINAL TOWN, THENCE SOUTHERLY ON THE EAST LINE OF SAID LOT 12, A DISTANCE OF 112 FEET, MORE OR LESS, TO THE SOUTHEAST CORNER OF SAID LOT 12, THENCE SOUTHERLY, A DISTANCE OF 16 FEET, MORE OR LESS, TO THE NORTHEAST CORNER OF LOT 5, BLOCK 11 OF SAID ORIGINAL TOWN, THENCE SOUTHERLY ON THE EAST LINE OF SAID LOT 5, A DISTANCE OF 112 FEET, MORE OR LESS, TO THE SOUTHEAST CORNER OF SAID LOT 5, THENCE SOUTHERLY, A DISTANCE OF 420 FEET, MORE OR LESS, TO THE NORTHEAST CORNER OF LOT 5, BLOCK 6 OF J.P. GANDY'S ADDITION TO THE CITY OF BROKEN BOW,

THENCE SOUTHERLY ON THE EAST LINE OF SAID LOT 5, A DISTANCE OF 112 FEET, MORE OR LESS, TO THE SOUTHEAST CORNER OF SAID LOT 5, THENCE EASTERLY ON THE SOUTH LINE OF LOTS 4 THROUGH 1 INCLUSIVE OF SAID BLOCK 6, A DISTANCE OF 120 FEET, MORE OR LESS, TO THE SOUTHEAST CORNER OF SAID LOT 1, THENCE EASTERLY, A DISTANCE OF 80 FEET, MORE OR LESS, TO THE SOUTHWEST CORNER OF LOT 10, BLOCK 5 OF SAID J.P. GANDY'S ADDITION, THENCE EASTERLY ON THE SOUTH LINE OF LOTS 10 THROUGH 1 INCLUSIVE OF SAID BLOCK 5, A DISTANCE OF 240 FEET, MORE OR LESS, TO THE SOUTHEAST CORNER OF SAID LOT 1, THENCE EASTERLY, A DISTANCE OF 80 FEET, MORE OR LESS, TO THE SOUTHWEST CORNER OF LOT 10, BLOCK 4 OF SAID J.P. GANDY'S ADDITION, THENCE NORTHERLY ON THE WEST LINE OF SAID LOT 10, A DISTANCE OF 112 FEET, MORE OR LESS, TO THE NORTHWEST CORNER OF SAID LOT 10, THENCE EASTERLY ON THE NORTH LINE OF LOTS 10 THROUGH 1 INCLUSIVE OF SAID BLOCK 4, A DISTANCE OF 240 FEET, MORE OR LESS, TO THE NORTHEAST CORNER OF SAID LOT 1, THENCE EASTERLY, A DISTANCE OF 80 FEET, MORE OR LESS, TO THE NORTHWEST CORNER OF LOT 10, BLOCK 3 OF SAID J.P. GANDY'S ADDITION, THENCE EASTERLY ON THE NORTH LINE OF LOTS 10 THROUGH 6 INCLUSIVE, OF SAID BLOCK 3, A DISTANCE OF 120 FEET, MORE OR LESS, TO THE NORTHEAST CORNER OF SAID LOT 6, THENCE NORTHERLY, A DISTANCE OF 100 FEET, MORE OR LESS, TO THE SOUTHWEST CORNER OF LOT 5, BLOCK 3 OF SAID ORIGINAL TOWN, THENCE NORTHERLY ON THE WEST LINE OF SAID LOT 5, A DISTANCE OF 112 FEET, MORE OR LESS, TO THE NORTHWEST CORNER OF SAID LOT 5, THENCE NORTHERLY, A DISTANCE OF 16 FEET, MORE OR LESS, TO THE SOUTHWEST CORNER OF LOT 17 OF SAID BLOCK 3, ORIGINAL TOWN, THENCE NORTHERLY ON THE WEST LINE OF SAID LOT 17, A DISTANCE OF 112 FEET, MORE OR LESS, TO THE NORTHWEST CORNER OF SAID LOT 17, THENCE NORTHERLY, A DISTANCE OF 80 FEET, MORE OR LESS, TO THE SOUTHWEST CORNER OF LOT 5, BLOCK 14, OF SAID ORIGINAL TOWN, THENCE NORTHERLY ON THE WEST LINE OF SAID LOT 5, A DISTANCE OF 112 FEET, MORE OR LESS, TO THE NORTHWEST CORNER OF SAID LOT 5, THENCE WESTERLY, A DISTANCE OF 200 FEET, MORE OR LESS, TO THE NORTHEAST CORNER OF LOT 1, BLOCK 13, OF SAID ORIGINAL TOWN, THENCE WESTERLY ON THE NORTH LINE OF LOTS 1 THROUGH 6 INCLUSIVE, A DISTANCE OF 120 FEET, MORE OR LESS, TO THE NORTHWEST CORNER OF SAID LOT 6, THENCE NORTHWESTERLY TO THE SOUTHEAST CORNER OF LOT 12 OF SAID BLOCK 13, THENCE NORTHERLY ON THE EAST LINE OF LOTS 12 THROUGH 16 INCLUSIVE, OF SAID BLOCK 13, A DISTANCE OF 120 FEET, MORE OR LESS, THENCE NORTHERLY, A DISTANCE OF 80 FEET, MORE OR LESS, TO THE SOUTHEAST CORNER OF LOT 16, BLOCK 20 OF SAID ORIGINAL TOWN, THENCE NORTHERLY ON THE EAST LINE OF LOTS 16 THROUGH 9 INCLUSIVE, OF SAID BLOCK 20, A DISTANCE OF 240 FEET,

MORE OR LESS, TO THE NORTHEAST CORNER OF SAID LOT 9, THENCE NORTHERLY, A DISTANCE OF 600 FEET, MORE OR LESS, TO THE SOUTHEAST CORNER OF LOT 6, BLOCK 105 OF SAID RAILROAD ADDITION, THENCE NORTHERLY ON THE EAST LINE OF LOTS 6 THROUGH 10 INCLUSIVE, OF SAID BLOCK 105, A DISTANCE OF 125 FEET, MORE OR LESS, TO THE NORTHEAST CORNER OF SAID LOT 10, THENCE NORTHERLY, A DISTANCE OF 80 FEET, MORE OR LESS, TO THE SOUTHEAST CORNER OF LOT 11, BLOCK 96 OF SAID RAILROAD ADDITION, THENCE WESTERLY ON THE SOUTH LINE OF SAID LOT 11, A DISTANCE OF 112 FEET, MORE OR LESS, TO THE SOUTHWEST CORNER OF SAID LOT 11, THENCE WESTERLY, A DISTANCE OF 80 FEET, MORE OR LESS, TO THE SOUTHEAST CORNER OF LOT 10, BLOCK 97 OF SAID RAILROAD ADDITION, THENCE WESTERLY ON THE SOUTH LINE OF SAID LOT 10, A DISTANCE OF 112 FEET, MORE OR LESS, TO THE SOUTHWEST CORNER OF SAID LOT 10, THENCE WESTERLY, A DISTANCE OF 16 FEET, MORE OR LESS, TO THE SOUTHEAST CORNER OF LOT 11 OF SAID BLOCK 97, RAILROAD ADDITION, THENCE WESTERLY ON THE SOUTH LINE OF SAID LOT 11, A DISTANCE OF 102 FEET, MORE OR LESS, TO THE SOUTHWEST CORNER OF SAID LOT 11, THENCE WESTERLY, A DISTANCE OF 80 FEET, MORE OR LESS, TO THE SOUTHEAST CORNER OF SAID LOT 10, BLOCK 98, RAILROAD ADDITION, THENCE WESTERLY ON THE SOUTH LINE OF SAID LOT 10, A DISTANCE OF 112 FEET, MORE OR LESS, TO THE POINT OF BEGINNING,

and within which district, the following streets shall be improved by paving, driveways, sidewalks, brick paving, subgrade preparation, excavation, storm sewer pipe, inlets, manholes, water main, service lines, water line, fire hydrants, directional boring, bore and install steel casing, sanitary sewer main, manholes, lighting, utility adjustments and all necessary appurtenances related thereto:

8th Avenue from South "E" Street (Highway 2) to South "D" Street;
9th Avenue, from South "E" Street (Highway 2) to South "D" Street,
10th Avenue from South "E" Street (Highway 2 to BNSF Railroad Tracks,
9th Avenue from South "B" Street to North "B" Street, and
"D" Street from 10th Avenue to 9th Avenue.

Section 3. That the outer boundaries of Street Improvement District No. 2014-2 shall include, in addition to the streets to be improved, all of the following described property to-wit:

A PARCEL OF LAND LOCATED IN THE CITY OF BROKEN BOW, CUSTER COUNTY, NEBRASKA, ALSO BEING IN THE NORTHEAST AND SOUTHEAST QUARTERS OF SECTION 32, TOWNSHIP 17 NORTH, RANGE 20 WEST OF THE SIXTH P.M., CUSTER COUNTY, NEBRASKA, BEING MORE PARTICULARLY DESCRIBED AS FOLLOWS: BEGINNING AT THE

NORTHWEST CORNER OF LOT 6, BLOCK 16 OF JEWETT AND LILLY ADDITION TO THE CITY OF BROKEN BOW, THENCE SOUTHERLY ON THE WEST LINE OF LOTS 6 THROUGH 10 INCLUSIVE, OF SAID BLOCK 16, A DISTANCE OF 240 FEET, MORE OR LESS, TO THE SOUTHWEST CORNER OF SAID LOT 10, THENCE SOUTHERLY, A DISTANCE OF 720 FEET, MORE OR LESS, TO THE NORTHEAST CORNER OF LOT 10, BLOCK 93 OF GROAT'S ADDITION TO THE CITY OF BROKEN BOW, THENCE SOUTHERLY ON THE EAST LINE OF LOTS 10 THROUGH 6 INCLUSIVE, OF SAID BLOCK 93, A DISTANCE OF 240 FEET, MORE OR LESS, TO THE SOUTHEAST CORNER OF SAID LOT 6, THENCE SOUTHERLY, A DISTANCE OF 80 FEET, MORE OR LESS, TO THE NORTHEAST CORNER OF LOT 8, BLOCK 108 OF SAID GROAT'S ADDITION, THENCE SOUTHERLY ON THE EAST LINE OF LOTS 8 THROUGH 6 INCLUSIVE, OF SAID BLOCK 108, A DISTANCE OF 144 FEET, MORE OR LESS, TO THE SOUTHEAST CORNER OF SAID LOT 6, THENCE SOUTHERLY, A DISTANCE OF 580 FEET, MORE OR LESS, TO THE NORTHEAST CORNER OF LOT 6, BLOCK 17 OF THE ORIGINAL TOWN AS PLATTED IN THE CITY OF BROKEN BOW, THENCE SOUTHERLY ON THE EAST LINE OF SAID LOT 6, A DISTANCE OF 112 FEET, MORE OR LESS, TO THE SOUTHEAST CORNER OF SAID LOT 6, THENCE SOUTHERLY, A DISTANCE OF 16 FEET, MORE OR LESS, TO THE NORTHEAST CORNER OF LOT 3 OF SAID BLOCK 17, THENCE SOUTHERLY ON THE EAST LINE OF SAID LOT 3, A DISTANCE OF 112 FEET, MORE OR LESS, TO THE SOUTHEAST CORNER OF SAID LOT 3, THENCE SOUTHERLY, A DISTANCE OF 80 FEET, MORE OR LESS, TO THE NORTHEAST CORNER OF LOT 6, BLOCK 16 OF SAID ORIGINAL TOWN, THENCE SOUTHERLY ON THE EAST LINE OF SAID LOT 6, A DISTANCE OF 112 FEET, MORE OR LESS, TO THE SOUTHEAST CORNER OF SAID LOT 6, THENCE SOUTHERLY, A DISTANCE OF 16 FEET, MORE OR LESS, TO THE NORTHEAST CORNER OF LOT 3 OF SAID BLOCK 16, THENCE SOUTHERLY ON THE EAST LINE OF SAID LOT 3, A DISTANCE OF 112 FEET, MORE OR LESS, TO THE SOUTHEAST CORNER OF SAID LOT 3, THENCE SOUTHERLY, A DISTANCE OF 80 FEET, MORE OR LESS, TO THE NORTHEAST CORNER OF LOT 13, BLOCK 1 OF SAID ORIGINAL TOWN, THENCE SOUTHERLY ON THE EAST LINE OF SAID LOT 13, A DISTANCE OF 112 FEET, MORE OR LESS, TO THE SOUTHEAST CORNER OF SAID LOT 13, THENCE SOUTHERLY, A DISTANCE OF 16 FEET, MORE OR LESS, TO THE NORTHEAST CORNER OF LOT 6 OF SAID BLOCK 1, THENCE SOUTHERLY ON THE EAST LINE OF SAID LOT 6, A DISTANCE OF 112 FEET, MORE OR LESS, TO THE SOUTHEAST CORNER OF SAID LOT 6, THENCE SOUTHERLY, A DISTANCE OF 100 FEET, MORE OR LESS, TO THE NORTHWEST CORNER OF LOT 2, BLOCK 1 OF J.P. GANDY'S ADDITION TO THE CITY OF BROKEN BOW, THENCE EASTERLY ON THE NORTH LINE OF LOTS 2 AND 1 INCLUSIVE, OF SAID BLOCK 1, A DISTANCE OF 160 FEET, MORE OR LESS, TO THE NORTHEAST CORNER OF SAID LOT 1, THENCE EASTERLY, A DISTANCE OF 80 FEET, MORE OR LESS, TO THE

NORTHWEST CORNER OF LOT 1, BLOCK 1 OF ROBERT HUNTER'S SUBDIVISION AS PLATTED IN THE CITY OF BROKEN BOW, THENCE EASTERLY ON THE NORTH LINE OF LOTS 3 THROUGH 4 INCLUSIVE OF SAID BLOCK 1, A DISTANCE OF 120 FEET, MORE OR LESS, TO THE NORTHEAST CORNER OF SAID LOT 4, THENCE NORTHERLY A DISTANCE OF 100 FEET, MORE OR LESS, TO THE SOUTHEAST CORNER OF LOT 3, BLOCK 1 OF MAULICK'S ADDITION TO THE CITY OF BROKEN BOW, THENCE NORTHERLY ON THE EAST LINE OF SAID LOT 3, A DISTANCE OF 112 FEET, MORE OR LESS, TO THE NORTHEAST CORNER OF SAID LOT 3, THENCE NORTHERLY, A DISTANCE OF 16 FEET, MORE OR LESS, TO THE SOUTHEAST CORNER OF LOT 10 OF SAID BLOCK 1, THENCE NORTHERLY ON THE EAST LINE OF SAID LOT 10, A DISTANCE OF 112 FEET, MORE OR LESS, TO THE NORTHEAST CORNER OF SAID LOT 10, THENCE NORTHERLY, A DISTANCE OF 80 FEET, MORE OR LESS, TO THE SOUTHEAST CORNER OF LOT 3, BLOCK 8 OF SAID MAULICK'S ADDITION, THENCE NORTHERLY ON THE EAST LINE OF SAID LOT 3, A DISTANCE OF 112 FEET, MORE OR LESS, TO THE NORTHEAST CORNER OF SAID LOT 3, THENCE NORTHERLY, A DISTANCE OF 16 FEET, MORE OR LESS, TO THE SOUTHEAST CORNER OF LOT 10 OF SAID BLOCK 8, THENCE NORTHERLY ON THE EAST LINE OF SAID LOT 10, A DISTANCE OF 112 FEET, MORE OR LESS, TO THE NORTHEAST CORNER OF SAID LOT 10, THENCE NORTHERLY, A DISTANCE OF 80 FEET, MORE OR LESS, TO THE SOUTHEAST CORNER OF LOT 3, BLOCK 9 OF SAID MAULICK'S ADDITION, THENCE NORTHERLY ON THE EAST LINE OF SAID LOT 3, A DISTANCE OF 112 FEET, MORE OR LESS, TO THE NORTHEAST CORNER OF SAID LOT 3, THENCE NORTHERLY, A DISTANCE OF 16 FEET, MORE OR LESS, TO THE SOUTHEAST CORNER OF LOT 10 OF SAID BLOCK 9, THENCE NORTHERLY ON THE EAST LINE OF SAID LOT 10, A DISTANCE OF 112 FEET, MORE OR LESS, TO THE NORTHEAST CORNER OF SAID LOT 10, THENCE NORTHERLY, A DISTANCE OF 2000 FEET, MORE OR LESS, TO THE EASTERLY EXTENSION OF THE NORTH LINE OF SAID LOT 6, BLOCK 16 OF JEWETT AND LILLY ADDITION, THENCE WESTERLY ON SAID EASTERLY EXTENSION, A DISTANCE OF 195 FEET, MORE OR LESS, TO THE NORTHEAST CORNER OF SAID LOT 6, THENCE WESTERLY ON THE NORTH LINE OF SAID LOT 6, A DISTANCE OF 144 FEET, MORE OR LESS, TO THE POINT OF BEGINNING,

and within which district, the following streets shall be improved by paving, driveways, sidewalks, subgrade preparation, excavation, storm sewer pipe, inlets, utility adjustments, seeding, concrete removals and all necessary appurtenances related thereto:

5th Avenue from South "E" Street (Highway 2) to North "F" Street.

Section 4. Said streets shall be improved and said improvements shall be made in accordance with the plans, specifications and estimate prepared by the special engineers for the City and to be approved by the Mayor and Council. The cost of such paving excepting street intersection shall be assessed against the property within said districts specifically benefited thereby in proportion to benefits.

Section 5. Notice of the creation of said Districts shall be published as provided by law in the *Custer County Chief*, a legal newspaper published in and of general circulation in Broken Bow, Nebraska.


Section 6. This ordinance shall be published in pamphlet form and take effect as provided by law.

PASSED AND APPROVED this 14th day of October, 2014.

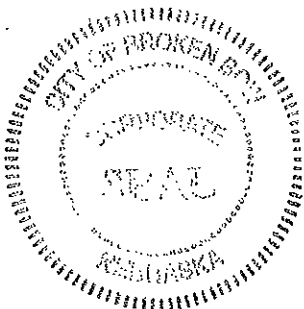
ATTEST:



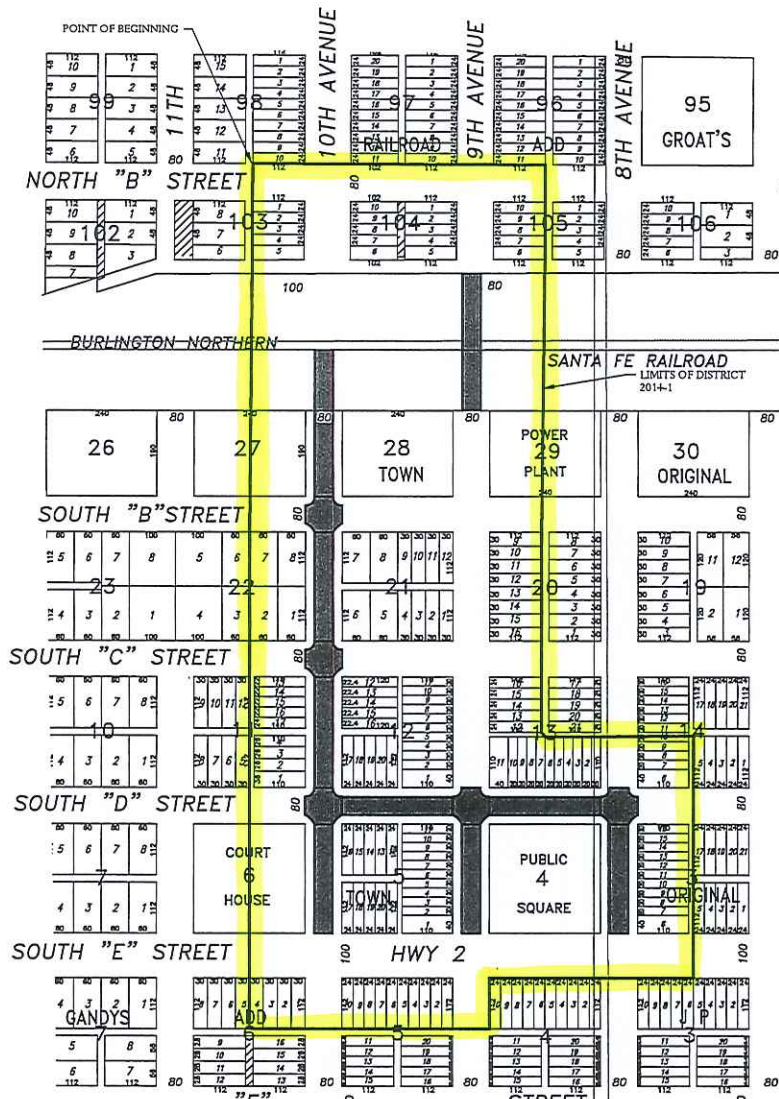
Mayor


City Clerk

(SEAL)



STREET IMPROVEMENT DISTRICT 2014-1



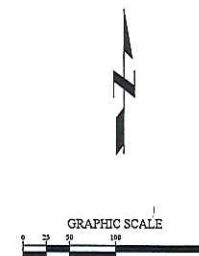
LEGAL DESCRIPTION STREET IMPROVEMENT DISTRICT 2014-1

A PARCEL OF LAND LOCATED IN THE CITY OF BROKEN BOW, CUSTER COUNTY, NEBRASKA, ALSO BEING IN THE NORTHEAST AND SOUTHEAST QUARTERS OF SECTION 32, TOWNSHIP 17 NORTH, RANGE 20 WEST OF THE SIXTH P.M., CUSTER COUNTY, NEBRASKA, BEING MORE PARTICULARLY DESCRIBED AS FOLLOWS: BEGINNING AT THE SOUTHWEST CORNER OF LOT 10, BLOCK 98 OF RAILROAD ADDITION TO THE CITY OF BROKEN BOW, THENCE SOUTHERLY, A DISTANCE OF 80 FEET, MORE OR LESS, TO THE NORTHWEST CORNER OF LOT 1, BLOCK 103 OF SAID RAILROAD ADDITION, THENCE SOUTHERLY ON THE WEST LINE OF LOTS 1 THROUGH 5 INCLUSIVE, OF SAID BLOCK 103, A DISTANCE OF 128 FEET, MORE OR LESS, TO THE SOUTHWEST CORNER OF SAID LOT 5, THENCE SOUTHERLY, A DISTANCE OF 600 FEET, MORE OR LESS, TO THE NORTHWEST CORNER OF LOT 7, BLOCK 22 OF ORIGINAL TOWN AS PLATTED IN THE CITY OF BROKEN BOW, THENCE SOUTHERLY ON THE WEST LINE OF LOTS 7 AND 2 INCLUSIVE, A DISTANCE OF 224 FEET, MORE OR LESS, TO THE SOUTHWEST CORNER OF SAID LOT 2, THENCE SOUTHERLY, A DISTANCE OF 80 FEET, MORE OR LESS, TO THE NORTHEAST CORNER OF LOT 12, BLOCK 11 OF SAID ORIGINAL TOWN, THENCE SOUTHERLY ON THE EAST LINE OF SAID LOT 12, A DISTANCE OF 112 FEET, MORE OR LESS, TO THE SOUTHEAST CORNER OF SAID LOT 12, THENCE SOUTHERLY, A DISTANCE OF 16 FEET, MORE OR LESS, TO THE NORTHEAST CORNER OF LOT 5, BLOCK 11 OF SAID ORIGINAL TOWN, THENCE SOUTHERLY ON THE EAST LINE OF SAID LOT 5, A DISTANCE OF 112 FEET, MORE OR LESS, TO THE SOUTHEAST CORNER OF SAID LOT 5, THENCE SOUTHERLY, A DISTANCE OF 420 FEET, MORE OR LESS, TO THE NORTHEAST CORNER OF LOT 5, BLOCK 6 OF J.P. GANDY'S ADDITION TO THE CITY OF BROKEN BOW, THENCE SOUTHERLY ON THE EAST LINE OF SAID LOT 5, A DISTANCE OF 112 FEET, MORE OR LESS, TO THE SOUTHEAST CORNER OF SAID LOT 5, THENCE EASTERLY ON THE SOUTH LINE OF LOTS 4 THROUGH 1 INCLUSIVE OF SAID BLOCK 6, A DISTANCE OF 120 FEET, MORE OR LESS, TO THE SOUTHEAST CORNER OF SAID LOT 1, THENCE EASTERLY, A DISTANCE OF 80 FEET, MORE OR LESS, TO THE SOUTHWEST CORNER OF LOT 10, BLOCK 5 OF SAID J.P. GANDY'S ADDITION, THENCE EASTERLY ON THE SOUTH LINE OF LOTS 10 THROUGH 1 INCLUSIVE OF SAID BLOCK 5, A DISTANCE OF 240 FEET, MORE OR LESS, TO THE SOUTHEAST CORNER OF SAID LOT 1, THENCE EASTERLY, A DISTANCE OF 80 FEET, MORE OR LESS, TO THE NORTHWEST CORNER OF LOT 10, BLOCK 3 OF SAID J.P. GANDY'S ADDITION, THENCE EASTERLY ON THE NORTH LINE OF LOTS 10 THROUGH 6 INCLUSIVE, OF SAID BLOCK 3, A DISTANCE OF 120 FEET, MORE OR LESS, TO THE NORTHEAST CORNER OF SAID LOT 6, THENCE NORTHERLY, A DISTANCE OF 100 FEET, MORE OR LESS, TO THE SOUTHWEST CORNER OF LOT 5, BLOCK 3 OF SAID ORIGINAL TOWN, THENCE NORTHERLY ON THE WEST LINE OF SAID LOT 5, A DISTANCE OF 112 FEET, MORE OR LESS, TO THE NORTHWEST CORNER OF SAID LOT 5, THENCE NORTHERLY, A DISTANCE OF 16 FEET, MORE OR LESS, TO THE SOUTHWEST CORNER OF LOT 17 OF SAID BLOCK 3, ORIGINAL TOWN, THENCE NORTHERLY ON THE WEST LINE OF SAID LOT 17, A DISTANCE OF 112 FEET, MORE OR LESS, TO THE NORTHWEST CORNER OF SAID LOT 17, THENCE NORTHERLY, A DISTANCE OF 80 FEET, MORE OR LESS, TO THE SOUTHWEST CORNER OF LOT 5, BLOCK 14, OF SAID ORIGINAL TOWN, THENCE NORTHERLY ON THE WEST LINE OF SAID LOT 5, A DISTANCE OF 112 FEET, MORE OR LESS, TO THE NORTHWEST CORNER OF SAID LOT 5, THENCE WESTERLY, A DISTANCE OF 200 FEET, MORE OR LESS, TO THE NORTHEAST CORNER OF LOT 1, BLOCK 13, OF SAID ORIGINAL TOWN, THENCE WESTERLY ON THE NORTH LINE OF LOTS 1 THROUGH 6 INCLUSIVE, A DISTANCE OF 120 FEET, MORE OR LESS, TO THE NORTHWEST CORNER OF SAID LOT 6, THENCE NORTHWESTERLY TO THE SOUTHEAST CORNER OF LOT 12 OF SAID BLOCK 13, THENCE NORTHERLY ON THE EAST LINE OF LOTS 12 THROUGH 16 INCLUSIVE, OF SAID BLOCK 13, A DISTANCE OF 120 FEET, MORE OR LESS, THENCE NORTHERLY, A DISTANCE OF 80 FEET, MORE OR LESS, TO THE SOUTHEAST CORNER OF LOT 16, BLOCK 20 OF SAID ORIGINAL TOWN, THENCE NORTHERLY ON THE EAST LINE OF LOTS 16 THROUGH 9 INCLUSIVE, OF SAID BLOCK 20, A DISTANCE OF 240 FEET, MORE OR LESS, TO THE NORTHEAST CORNER OF SAID LOT 9, THENCE NORTHERLY, A DISTANCE OF 600 FEET, MORE OR LESS, TO THE SOUTHEAST CORNER OF LOT 6, BLOCK 105 OF SAID RAILROAD ADDITION, THENCE NORTHERLY ON THE EAST LINE OF LOTS 6 THROUGH 10 INCLUSIVE, OF SAID BLOCK 105, A DISTANCE OF 125 FEET, MORE OR LESS, TO THE NORTHEAST CORNER OF SAID LOT 10, THENCE NORTHERLY, A DISTANCE OF 80 FEET, MORE OR LESS, TO THE SOUTHEAST CORNER OF LOT 11, BLOCK 96 OF SAID RAILROAD ADDITION, THENCE WESTERLY ON THE SOUTH LINE OF SAID LOT 11, A DISTANCE OF 112 FEET, MORE OR LESS, TO THE SOUTHWEST CORNER OF SAID LOT 11, THENCE WESTERLY, A DISTANCE OF 80 FEET, MORE OR LESS, TO THE SOUTHWEST CORNER OF LOT 10, BLOCK 97 OF SAID RAILROAD ADDITION, THENCE WESTERLY ON THE SOUTH LINE OF SAID LOT 10, A DISTANCE OF 112 FEET, MORE OR LESS, TO THE SOUTHWEST CORNER OF SAID LOT 10, THENCE WESTERLY, A DISTANCE OF 16 FEET, MORE OR LESS, TO THE SOUTHEAST CORNER OF LOT 11 OF SAID BLOCK 97, RAILROAD ADDITION, THENCE WESTERLY ON THE SOUTH LINE OF SAID LOT 11, A DISTANCE OF 102 FEET, MORE OR LESS, TO THE SOUTHWEST CORNER OF SAID LOT 11, THENCE WESTERLY, A DISTANCE OF 80 FEET, MORE OR LESS, TO THE SOUTHWEST CORNER OF SAID LOT 10, BLOCK 98, RAILROAD ADDITION, THENCE WESTERLY ON THE SOUTH LINE OF SAID LOT 10, A DISTANCE OF 112 FEET, MORE OR LESS, TO THE POINT OF BEGINNING.

CITY OF BROKEN BOW, NEBRASKA
STREET IMPROVEMENT DISTRICT 2014-1

STREET IMPROVEMENT DISTRICT
LEGAL DESCRIPTION AND DETAIL

PROJECT NO. 141001
DATE 10/9/2014
DRAWN BY JWH
FILE NAME SID-2014-1
FIELD BOOK
FIELD CREW
SURVEY FILE NO.
REVIEW BY
REVIEW DATE
REVISIONS



DOWNTOWN IMPROVEMENTS - STREET IMPROVEMENT DISTRICT 2014-1 (AMENDED)

100 FOOT MAXIMUM FOOTAGE ASSESSMENT

\$84 / RUNNING FOOT BROKEN BOW, NEBRASKA JEO PROJECT NO. 141001

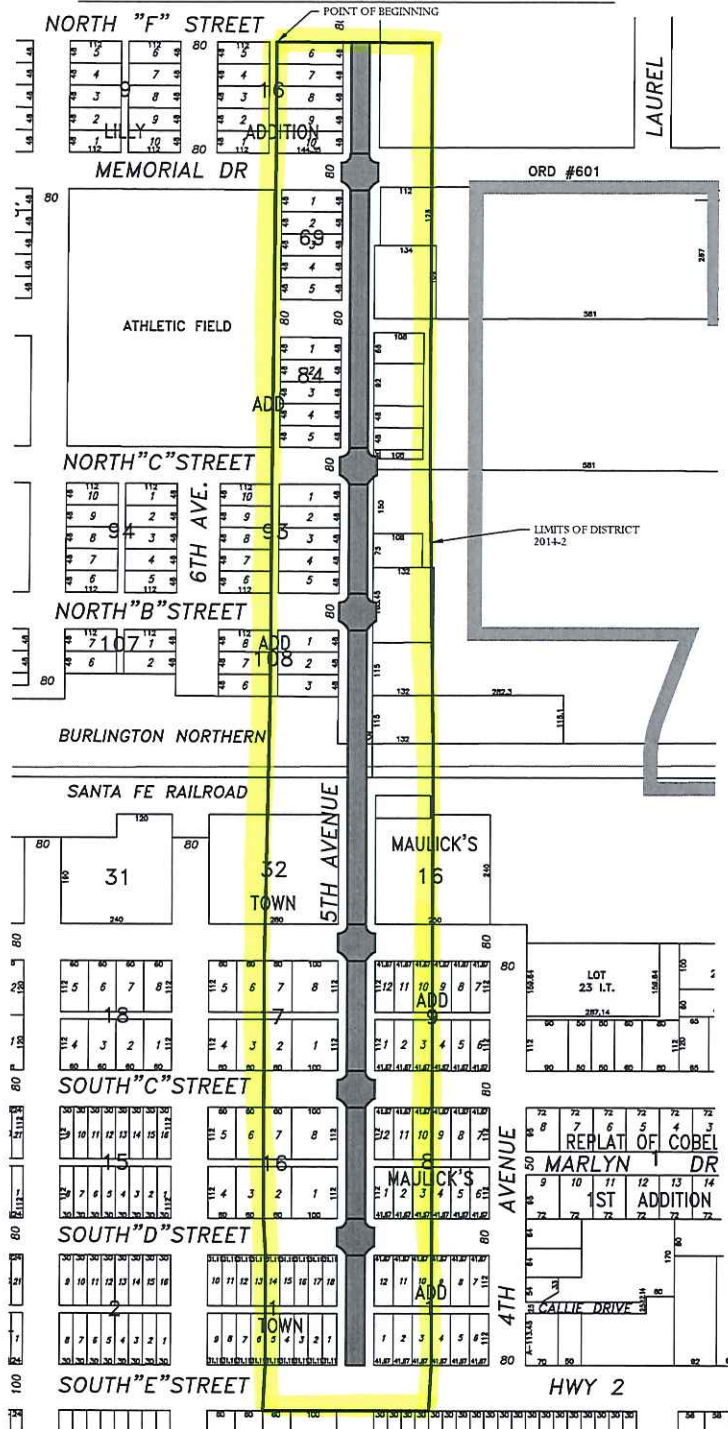
PARCEL NO.	NAME	ADDRESS	LEGAL DESCRIPTION	FOOTAGE	ASSESSMENT COST
BLOCK 13					
1	Bruning State Bank, Bank of Broken Bow	PO Box 545, Broken Bow, NE 68822	Lots 1-2 & East 3' Lot 3, Block 13, Original Town	60'	\$5,040.00
2	Bruning State Bank, Bank of Broken Bow	PO Box 545, Broken Bow, NE 68822	Lot 3 Ex. East 3', Block 13, Original Town		
3	Adam & Jamie Bartak	80474 E. Table Rd., Merna, NE 68856	Lot 4, Block 13, Original Town	20'	\$1,680.00
4	Patricia & Timothy Thomas, c/o Custer Floral	821 S. D Street, Broken Bow, NE 68822	Lots 5-6, Block 13, Original Town	40'	\$3,360.00
5	Janet M. & Thomas R. Loughran	827 S. D Street, Broken Bow, NE 68822	Lot 7, Block 13, Original Town	20'	\$1,680.00
6	Shirley & Charles McGinn	833 S. D Street, Broken Bow, NE 68822	Lot 8, Block 13, Original Town	20'	\$1,680.00
7	Nebraska Conference of 7th Day Adventists	77170 Hwy 40, Eddyville, NE 68834	Lot 9, Block 13, Original Town	20'	\$1,680.00
8	Travis & Jillana Barker	1434 South H Street, Broken Bow, NE 68822	Lot 10, Block 13, Original Town	20'	\$1,680.00
9	BAM Development Group, c/o Bill Butler	2268 Memorial Drive, Broken Bow, NE 68822	Lot 11, Block 13, Original Town	100'	\$8,400.00
BLOCK 6					
1	Custer County	431 S. 10th Avenue, Broken Bow, NE 68822	All Block 6, Original Town	100'	\$8,400.00
BLOCK 3					
1	Regina Michelle Albus	1910 Westridge Drive, Broken Bow, NE 68822	Lot 6, Block 3, Original Town	20'	\$1,680.00
2	Dick A. & Jodene R. Taylor	79559 Sumner Road, Broken Bow, NE 68822	Lot 7, Block 3, Original Town	20'	\$1,680.00
3	Orval L. & Judith D. Moninger	722 N. 9th Avenue, Broken Bow, NE 68822	Lot 8, Block 3, Original Town	20'	\$1,680.00
4	Bow Tax & Accounting Inc.	430 South 8th Avenue, Broken Bow, NE 68822	Lot 9, Block 3, Original Town	20'	\$1,680.00
5	Gordon & Pauline Gaasch	PO Box 182, Broken Bow, NE 68822	Lot 10, Block 3, Original Town	20'	\$1,680.00
6	Security State Bank	PO Box 400, Ansley, NE 68814	Lots 11-12, Block 3, Original Town	40'	\$3,360.00
7	Corey & Kim Clay	416 S. 8th Avenue, Broken Bow, NE 68822	Lot 13, Block 3, Original Town	20'	\$1,680.00
8	Jeffrey W. & Kelly K. Sanger	PO Box 183, Broken Bow, NE 68822	Lots 14-16, Block 3, Original Town	60'	\$5,040.00

BLOCK 28					
PARCEL NO.	NAME	ADDRESS	LEGAL DESCRIPTION	FOOTAGE	ASSESSMENT COST
1	James Len Girardin	951 S. 1st Avenue, Broken Bow, NE 68822	A parcel of land commencing at a point one hundred six (106) feet North of the Southwest corner of Block 28, Original Town of Broken Bow, Nebraska; thence running East 112 feet; thence North 54 feet; thence West 112 feet; thence South 54 feet to the point of beginning. Containing. 14 acres, more or less; A parcel of land commencing at a point 72 feet North of the Southwest corner of Block 28, Original Town of Broken Bow, Nebraska ; thence running East 112 feet; thence North 34 feet; thence West 112 feet; thence South 34 feet to the point of beginning. Containing .09 aces, more or less. A tract of land described as follows, to-wit; Beginning at a point 160 feet north of the Southwest corner of Block 28 in the Original Town of Broken Bow in Custer County, Nebraska, running thence East 112 feet; thence North 30 feet; thence West 112 feet; thence	100'	\$8,400.00
2	Michael S. & Amber E. Evans, c/o Evans Feed Co., Inc.	PO Box 156, Broken Bow, NE 68822	A tract of land in Block 28, of the Original Town of Broken Bow, Nebraska, commencing at the Southwest corner of said Block 28, running thence North 72 feet; thence East 112 feet; thence South 72 feet; thence West 112 feet to the place of beginning.	72'	\$6,048.00
BLOCK 21					
1	Evans Feed Co., Inc.	PO Box 156, Broken Bow, NE 68822	Parts of Lots 1-2, Lots 3-6 and South 72' Lots 9-12, Block	100'	\$8,400.00
BLOCK 11					
1	White House Rentals, LLC	PO Box 586, Broken Bow, NE 68822	East 59.5' of South 22'6" Lot 1, Original Town	22.50'	\$1,890.00
2	Custer Federal State Bank	PO Box 310, Broken Bow, NE 68822	North 13'5" Lot 1, All Lot 2, South 6' Lot 3, Original Town	89.50'	\$7,518.00
3	Custer Federal State Bank	PO Box 310, Broken Bow, NE 68822	Lot 3 Ex. S. 6', All of Lot 4, Original Town		

PARCEL NO.	NAME	ADDRESS	LEGAL DESCRIPTION	FOOTAGE	ASSESSMENT COST
4	HPC of NE, Inc. d/b/a Custer County Chief	305 S. 10th Avenue, Broken Bow, NE 68822	Lot 13, North 10' Lot 14, Original Town	32.4'	\$2,721.60
5	HPC of NE, Inc. d/b/a Custer County Chief	305 S. 10th Avenue, Broken Bow, NE 68822	South 12' Lot 14, Lot 15, Block 11, Original Town	34.8'	\$2,923.20
6	The Vulpes Corp, Inc. c/o Tiffany Theater	317 South 10th Avenue, Broken Bow, NE 68822	Lots 16-17, Block 11, Original Town	44.8'	\$3,763.20
STREET RIGHT OF WAY					
1	William V. & Corrine Steffens Trust	1903 Westridge Drive, Broken Bow, NE 68822	Parcel between Block 11 & 22, Original Town	80'	\$6,720.00
BLOCK 22					
1	Shirley Sylvie McGinn	42183 Rifle Creek Road, Anselmo, NE 68813	Lots 3-4 North of Creek, Lots 5-8, 1/2 Vacated Street Block 22, Original Town	100'	\$8,400.00
2	City of Broken Bow	PO Box 504, Broken Bow, NE 68822	South 46' of East 110' Lots 1-2, Block 22, Original Town	68'	\$5,712.00
3	City of Broken Bow	PO Box 504, Broken Bow, NE 68822	North 22' of South 68' of Lots 1-2, Block 22, Original Town		
BLOCK 27					
1	James Len Girardin	951 S. 1st Avenue, Broken Bow, NE	Parcel in E1/2 Block 27, Original Town (80' x 120')	80'	\$6,720.00
2	City of Broken Bow	PO Box 504, Broken Bow, NE 68822	Parcels 5-6, Block 27 (110' x 120')	100'	\$8,400.00
BLOCK 12					
1	Great Western Bank Attn: Accounting	100 N. Phillips Avenue, Sioux Falls, SD 57104	Lots 1-4, Block 12, Original Town	100'	\$8,400.00
2	City of Broken Bow	PO Box 504, Broken Bow, NE 68822	Lots 12-16, Block 12, Original Town	100'	\$8,400.00
3	Nebraska State Bank	PO Box 688, Broken Bow, NE 68822	Lots 17-21, Block 12, Original Town	100'	\$8,400.00
BLOCK 5					
1	Custer County Historial Society	PO Box 334, Broken Bow, NE 68822	Lots 1-2, Block 5, Original Town	43.64'	\$3,665.76
2	Anderson, Arthur J. Rev. Trust Anderson, Dianne K. Rev. Trust	45600 Hwy 70, Arcadia, NE 68815	Lot 3, Block 5, Original Town	21.82'	\$1,832.88
3	HAKO LLC	80445 Rd 431, Merna, NE 68856	Lots 4-5, Block 5, Original Town	43.64'	\$3,665.76
4	Betty J. Hunt	837 N. 13th Avenue, Broken Bow, NE 68822	Lot 6, Block 5, Original Town	21.82'	\$1,832.88
5	Irish Heritage, LLC Michael J. Downey c/o	PO Box 107, Benkelman, NE 69021	Lot 7, Block 5, Original Town	21.82'	\$1,832.88
6	Crystal Esch and Natasha L. Dalby	80451 Round Valley Road, Broken Bow, NE 68822	Lot 8, Block 5, Original Town	21.82'	\$1,832.88
7	Carl D. & Carol L. Christen	1349 N. M Street, Broken Bow, NE 68822	Lot 9, Block 5, Original Town	21.82'	\$1,832.88
8	Norman & Amy Sillivan	407 South 9th Avenue, Broken Bow, NE 68822	Lot 10, Block 5, Original Town	21.82'	\$1,832.88

PARCEL NO.	NAME	ADDRESS	LEGAL DESCRIPTION	FOOTAGE	ASSESSMENT COST
9	Custer County Foundation, Inc.	P.O. Box 304, Broken Bow, NE 68822	East 70' 2.5 Lot 11, Block 5, Original Town	92.03'	\$7,730.52
10	Tim L. & Carolyn Lee Troxel	44942 Hwy 70, Berwyn, NE 68814	West 41'9.5 Lot 11, Block 5, Original Town	41.79'	\$3,510.36
11	Douglas A. Stewart & Radine Fiorelli Stewart	926 S. D Street, Broken Bow, NE 68822	Lots 12-13, Block 5, Original Town	44.8'	\$3,763.20
12	Michael Borders	PO Box 133, Broken Bow, NE 68822	Lot 14, Block 5, Original Town	22.4'	\$1,881.60
13	Michael S. & Allison M. Borders	PO Box 133, Broken Bow, NE 68822	Lot 15, Block 5, Original Town	22.4'	\$1,881.60
14	Paul A. & Connie Ulmer	80797 Lillian Road, Broken Bow, NE 68822	Lot 16, Block 5, Original Town	100'	\$8,400.00
15	Breanna & Zachary Bartak	42276 Rd 802, Merna, NE 68856	North 24' Lots 17-21, Original Town	24'	\$2,016.00
16	Michael & Amber Evans	PO Box 156, Broken Bow, NE 68822	South 88' of Lots 17-18, Block 5, Original Town	88'	\$7,392.00
ADDITIONS					
BLOCK 104					
1	Girardin Ventures, LLC	126 North 10th Avenue, Broken Bow, NE 68822	Lots 1-4, Block 104, Railroad Add	100'	\$8,400.00
BLOCK 105					
1	Arrow Seed	126 North 10th Avenue, Broken Bow, NE 68822	Lots 6-10, Block 105, Railroad Add	100'	\$8,400.00
TOTAL NON CITY				2550.02'	\$205,768.08
TOTAL CITY				268'	\$22,512.00

STREET IMPROVEMENT DISTRICT 2014-2



LEGAL DESCRIPTION STREET IMPROVEMENT DISTRICT 2014-2

A PARCEL OF LAND LOCATED IN THE CITY OF BROKEN BOW, CUSTER COUNTY, NEBRASKA, ALSO BEING IN THE NORTHEAST AND SOUTHEAST QUARTERS OF SECTION 32, TOWNSHIP 17 NORTH, RANGE 20 WEST OF THE SIXTH P.M., CUSTER COUNTY, NEBRASKA, BEING MORE PARTICULARLY DESCRIBED AS FOLLOWS: BEGINNING AT THE NORTHWEST CORNER OF LOT 6, BLOCK 16 OF JEWETT AND LILLY ADDITION TO THE CITY OF BROKEN BOW, THENCE SOUTHERLY ON THE WEST LINE OF LOTS 6 THROUGH 10 INCLUSIVE, OF SAID BLOCK 16, A DISTANCE OF 240 FEET, MORE OR LESS, TO THE SOUTHWEST CORNER OF SAID LOT 10, THENCE SOUTHERLY, A DISTANCE OF 720 FEET, MORE OR LESS, TO THE NORTHEAST CORNER OF LOT 10, BLOCK 93 OF GROAT'S ADDITION TO THE CITY OF BROKEN BOW, THENCE SOUTHERLY ON THE EAST LINE OF LOTS 10 THROUGH 6 INCLUSIVE, OF SAID BLOCK 93, A DISTANCE OF 240 FEET, MORE OR LESS, TO THE SOUTHEAST CORNER OF SAID LOT 6, THENCE SOUTHERLY, A DISTANCE OF 80 FEET, MORE OR LESS, TO THE NORTHEAST CORNER OF LOT 8, BLOCK 108 OF SAID GROAT'S ADDITION, THENCE SOUTHERLY ON THE EAST LINE OF LOTS 8 THROUGH 6 INCLUSIVE, OF SAID BLOCK 108, A DISTANCE OF 144 FEET, MORE OR LESS, TO THE SOUTHEAST CORNER OF SAID LOT 6, THENCE SOUTHERLY, A DISTANCE OF 580 FEET, MORE OR LESS, TO THE NORTHEAST CORNER OF LOT 6, BLOCK 17 OF THE ORIGINAL TOWN AS PLATTED IN THE CITY OF BROKEN BOW, THENCE SOUTHERLY ON THE EAST LINE OF SAID LOT 6, A DISTANCE OF 112 FEET, MORE OR LESS, TO THE SOUTHEAST CORNER OF SAID LOT 6, THENCE SOUTHERLY, A DISTANCE OF 16 FEET, MORE OR LESS, TO THE NORTHEAST CORNER OF LOT 3 OF SAID BLOCK 17, THENCE SOUTHERLY ON THE EAST LINE OF SAID LOT 3, A DISTANCE OF 112 FEET, MORE OR LESS, TO THE SOUTHEAST CORNER OF SAID LOT 3, THENCE SOUTHERLY, A DISTANCE OF 80 FEET, MORE OR LESS, TO THE NORTHEAST CORNER OF LOT 6, BLOCK 16 OF SAID ORIGINAL TOWN, THENCE SOUTHERLY ON THE EAST LINE OF SAID LOT 6, A DISTANCE OF 112 FEET, MORE OR LESS, TO THE SOUTHEAST CORNER OF SAID LOT 6, THENCE SOUTHERLY, A DISTANCE OF 16 FEET, MORE OR LESS, TO THE NORTHEAST CORNER OF LOT 3 OF SAID BLOCK 16, THENCE SOUTHERLY ON THE EAST LINE OF SAID LOT 3, A DISTANCE OF 112 FEET, MORE OR LESS, TO THE SOUTHEAST CORNER OF SAID LOT 3, THENCE SOUTHERLY, A DISTANCE OF 80 FEET, MORE OR LESS, TO THE NORTHEAST CORNER OF LOT 13, BLOCK 1 OF SAID ORIGINAL TOWN, THENCE SOUTHERLY ON THE EAST LINE OF SAID LOT 13, A DISTANCE OF 112 FEET, MORE OR LESS, TO THE SOUTHEAST CORNER OF SAID LOT 13, THENCE SOUTHERLY, A DISTANCE OF 16 FEET, MORE OR LESS, TO THE NORTHEAST CORNER OF LOT 6 OF SAID BLOCK 1, THENCE SOUTHERLY ON THE EAST LINE OF SAID LOT 6, A DISTANCE OF 112 FEET, MORE OR LESS, TO THE SOUTHEAST CORNER OF SAID LOT 6, THENCE SOUTHERLY, A DISTANCE OF 100 FEET, MORE OR LESS, TO THE NORTHWEST CORNER OF LOT 2, BLOCK 1 OF J.P. GANDY'S ADDITION TO THE CITY OF BROKEN BOW, THENCE EASTERLY ON THE NORTH LINE OF LOTS 2 AND 1 INCLUSIVE, OF SAID BLOCK 1, A DISTANCE OF 160 FEET, MORE OR LESS, TO THE NORTHEAST CORNER OF SAID LOT 1, THENCE EASTERLY, A DISTANCE OF 80 FEET, MORE OR LESS, TO THE NORTHWEST CORNER OF LOT 1, BLOCK 1 OF ROBERT HUNTER'S SUBDIVISION AS PLATTED IN THE CITY OF BROKEN BOW, THENCE EASTERLY ON THE NORTH LINE OF LOTS 3 THROUGH 4 INCLUSIVE OF SAID BLOCK 1, A DISTANCE OF 120 FEET, MORE OR LESS, TO THE NORTHEAST CORNER OF SAID LOT 4, THENCE NORTHERLY A DISTANCE OF 100 FEET, MORE OR LESS, TO THE SOUTHEAST CORNER OF LOT 3, BLOCK 1 OF MAULICK'S ADDITION TO THE CITY OF BROKEN BOW, THENCE NORTHERLY ON THE EAST LINE OF SAID LOT 3, A DISTANCE OF 112 FEET, MORE OR LESS, TO THE NORTHEAST CORNER OF SAID LOT 3, THENCE NORTHERLY, A DISTANCE OF 80 FEET, MORE OR LESS, TO THE SOUTHEAST CORNER OF LOT 10 OF SAID BLOCK 1, THENCE NORTHERLY ON THE EAST LINE OF SAID LOT 10, A DISTANCE OF 112 FEET, MORE OR LESS, TO THE NORTHEAST CORNER OF SAID LOT 10, THENCE NORTHERLY, A DISTANCE OF 16 FEET, MORE OR LESS, TO THE SOUTHEAST CORNER OF LOT 3, BLOCK 9 OF SAID MAULICK'S ADDITION, THENCE NORTHERLY ON THE EAST LINE OF SAID LOT 3, A DISTANCE OF 112 FEET, MORE OR LESS, TO THE NORTHEAST CORNER OF SAID LOT 10, THENCE NORTHERLY, A DISTANCE OF 80 FEET, MORE OR LESS, TO THE SOUTHEAST CORNER OF LOT 3, BLOCK 9 OF SAID MAULICK'S ADDITION, THENCE NORTHERLY ON THE EAST LINE OF SAID LOT 3, A DISTANCE OF 112 FEET, MORE OR LESS, TO THE NORTHEAST CORNER OF SAID LOT 10, THENCE NORTHERLY, A DISTANCE OF 16 FEET, MORE OR LESS, TO THE SOUTHEAST CORNER OF LOT 10 OF SAID BLOCK 9, THENCE NORTHERLY ON THE EAST LINE OF SAID LOT 10, A DISTANCE OF 112 FEET, MORE OR LESS, TO THE NORTHEAST CORNER OF SAID LOT 6, BLOCK 16 OF JEWETT AND LILLY ADDITION, THENCE WESTERLY ON SAID EASTERLY EXTENSION, A DISTANCE OF 195 FEET, MORE OR LESS, TO THE NORTHEAST CORNER OF SAID LOT 6, THENCE WESTERLY ON THE NORTH LINE OF SAID LOT 6, A DISTANCE OF 144 FEET, MORE OR LESS, TO THE POINT OF BEGINNING.

5th AVENUE - SOUTH E STREET (HIGHWAY 2) TO MEMORIAL DRIVE
STREET IMPROVEMENT DISTRICT 2014-2
ASSESSMENT SCHEDULE
\$20.00 / RUNNING FOOT BROKEN BOW, NEBRASKA JEO PROJECT NO. 100118

PARCEL NO.	NAME	ADDRESS	LEGAL DESCRIPTION	FOOTAGE	ASSESSMENT COST
ORIGINAL TOWN					
1	Peggy Reiser	511 S. E, Broken Bow, NE 68822	Lots 1-2, Block 1, Original Town	112	\$2,240.00
2	Douglas Family Trust Co-Treas: Penny D. & Fred A. Douglas	712 Avondale Street, Broken Bow, NE 68822	Lots 3-4 & East 10' Lot 5, Block 1, Original Town		
3	Elizabeth Mosher	420 N. 11th St., Broken Bow, NE 68822	Lot 5 Ex. E 10', Lot 6, E1/2 Lot 7, Block 1, Original Town		
4	Chad & Megan Hempstead	522 South D Street, Broken Bow, NE 68822	E 10' Lot 14 & Lots 15-16, Block 1, Original Town		
5	Raymond Brown	80116 Seven Mile Avenue, Arcadia, NE 68815	Lots 17-18, Block 1, Original Town	112	\$2,240.00
6	Matthew J. Wright	335 S. 10th St., Broken Bow, NE 68822	E1/2 Lot 1, Block 16, Original Town	112	\$2,240.00
7	Ericstar Properties LLC	PO Box 1949, North Platte, NE 69103	W1/2 Lot 1, Block 16, Orignal Town		
8	Opportunity Land Investments, LLC c/o Christopher Myers	720 Pawnee Lane, Broken Bow, NE 68822	Lots 2-4, Block 16, Original Town		
9	Opportunity Land Investments, LLC c/o Christopher Myers	720 Pawnee Lane, Broken Bow, NE 68822	Lots 7-8, Block 16, Original Town	112	\$2,240.00
10	Randall L. & Amy White	509 S. C St., Broken Bow, NE 68822	Lots 1-2, Block 17, Original Town	112	\$2,240.00
11	Anthony & Kristi Sanchez	1321 N. B St., Broken Bow, NE 68822	Lot 7, Block 17, Original Town		
12	Carissa J. Flenniken & Jeffrey White	79681 Dutchman Valley Road, Broken Bow, NE 68822	Lot 8, Block 17, Original Town	112	\$2,240.00
13	Cecil Burt, Jr.	534 S. 6th Avenue, Broken Bow, NE 68822	Parcel in Block 32, Original Town	78	\$1,560.00
14	Tim and Patricia Thomas	1299 Airport Road, Broken Bow, NE 68822	Parcel in Block 32, Original Town	62	\$1,240.00
GROATS ADDITION					
1	Wayne, Larry, & Donna Fisher	417 N 5th St., Broken Bow, NE 68822	Lot 1 and N1/2 Lot 2, Block 69, Groats Addition	72	\$1,440.00
2	Larry & Donna Fisher	417 N. 5th St., Broken Bow, NE 68822	S1/2 Lot 2, Lot 3 and N36' Lot 4, Block 69, Groats Addition	108	\$2,160.00
3	Brandon Hoffman	984 Preakness Cit, Deland, FL 32724	S12' Lot 4 and All Lot 5, Block 69, Groats Addition	60	\$1,200.00
4	Robert & Susan Rose	343 N. 5th St., Broken Bow, NE 68822	Lots 1-2 and N1/2 Lot 3, Block 84, Groats Addition	120	\$2,400.00

PARCEL NO.	NAME	ADDRESS	LEGAL DESCRIPTION	FOOTAGE	ASSESSMENT COST
5	Opportunity Land Investments, LLC c/o Christopher Myers	720 Pawnee Lane, Broken Bow, NE 68822	S1/2 Lot 3 and All Lots 4-5, Block 84, Groats Addition	120	\$2,400.00
6	Delbert Porter	502 N. C St., Broken Bown, NE 68822	E60' Lots 1-2, & E60' N1/2 Lot 3, Block 93, Groats Addition	120	\$2,400.00
7	Opportunity Land Investments, LLC c/o Christopher Myers	720 Pawnee Lane, Broken Bow, NE 68822	W72' Lots 1-2 & W72' N1/2 Lot 3, Block 93, Groats Addition		
8	City of Broken Bow	P.O. Box 504, Broken Bow, NE 68822	S1/2 Lot 3 & All Lot 4, Block 93, Groats Addition	72	\$1,440.00
9	City of Broken Bow	P.O. Box 504, Broken Bow, NE 68822	Lot 5, Block 93, Groats Addition	48	\$960.00
10	Trotter, Inc.	PO Box 158, Arcadia, NE 68815	Lots 1-2, Block 108, Groats Addition	96	\$1,920.00
11	Wendell & Kathy Brott	41041 Road 761, PO Box 285, Gothenburg, NE 69138	Lots 3 & 6 + vacated alley between Lots 7-8, Block 108, Groats Addition	48	\$960.00
12	Wendell & Kathy Brott	41041 Road 761, PO Box 285, Gothenburg, NE 69138	IOLL: Pens/Fence: Railroad Addition Block 106 & Groats Blocks 107-108		
MAULICK'S ADDITION					
1	Douglas & Sheila Staab	44010 Memorial Drive, Broken Bow, NE 68822	Lot 1, Block 1, Maulick's Addition	112	\$2,240.00
2	Christine M. Cooley	435 S. E St., Broken Bow, NE 68822	Lot 2, Block 1, Maulick's Addition		
3	Mary Katherine Price	427 S. E St., Broken Bow, NE 68822	Lot 3, Block 1, Maulick's Addition		
4	Edward & Michele Staggs	416 S. D St., Broken Bow, NE 68822	W38.51' Lot 8, All Lots 9-10, E 3'4 Lot 11, Block 1, Maulick's Addition		
5	Lanny Dainton	349 S. H St., Broken Bow, NE 68822	W38-1/3' of N62' Lot 11 & N62' Lot 12, Block 1, Maulick's Addition	62	\$1,240.00
6	Theresa Cheryl Sharp	418 S. 5th St., Broken Bow, NE 68822	S50' Lot 11 Ex. E 3-1/3', S 50' Lot 12, Block 1, Maulick's Addition	50	\$1,000.00
7	William & Miche Rowell	441 S. D St., Broken Bow, NE 68822	Lots 1-2, Block 8, Maulick's Additon	112	\$2,240.00
8	Opportunity Land Investments, LLC c/o Christopher Myers	720 Pawnee Lane, Broken Bow, NE 68822	Lots 3-4 & W28'4" Lot 5, Block 8, Maulick's Addition		
9	Province Plumbing & Heating Co.	PO Box 382, Broken Bow, NE 68822	Lot 9 & Lot 10 Ex. W 10.34', Block 8, maulick's Addition		
10	Province Plumbing & Heating Co.	PO Box 382, Broken Bow, NE 68822	W 10.34' Lot 10 & E 11.7' Lot 11, Block 8, Maulick's Addition		
11	Gene & Laura Hendricks	310 S. 5th St., Broken Bow, NE 68822	Lot 11 Ex. W 10' & Ex. E 10.34', Block 8, Maulick's Addition		
12	Gene & Laura Hendricks	310 S. 5th St., Broken Bow, NE 68822	W 10' Lot 11 & All Lot 12, Block 8, Maulick's Addition	112	\$2,240.00

PARCEL NO.	NAME	ADDRESS	LEGAL DESCRIPTION	FOOTAGE	ASSESSMENT COST
13	David & Tammy Hendrickson	733 N. 13th Avenue, Broken Bow, NE 68822	Lots 1-3, Block 9, Maulick's Addition	112	\$2,240.00
14	Dell Done Wright Water, Inc.	PO Box 361, Broken Bow, NE 68822	N72' Lots 11-12, N88' of E25' Lot 10, N72' of W 16.8' Lot 10, Block 9, Maulick's Addition	72	\$1,440.00
15	Ardith Joleen McCandless Stewart Rev. Trust	1499 Myers Road, Broken Bow, NE 68822	Parcel in Lots 10-12, Block 9, Maulick's Additon	40	\$800.00
16	Wendell & Kathy Brott	41041 Road 761, PO Box 285, Gothenburg, NE 69138	Lots 1-12 Ex. Parcel to the City, Block 16, Maulick's Additon	184	\$3,680.00
PARCELS					
1	Broken Bow Christian Life Center	204 N. 5th St., PO Box 124, Broken Bow, NE 68822	Parcels NW1/4NW1/4 Sec. 33-17-20 .69 Acres (238.45' along 5th Avenue)	238.45	\$4,769.00
2	Wanda L. S. Melville Rev. Trust	PO Box 297, Broken Bow, NE 68822	Parcels NW1/4NW1/4 Sec. 33-17-20 1.73 acres (209.9' along 5th Avenue)	209.9	\$4,198.00
BISHOP ADDITION					
1	Barbara Koch Bacon & Harold Koch	302 N. 5th St., Broken Bow, NE 68822	Lot 6 & S 30' Lot 7 & N1/2 Vac. Street, Block 1, Bishops Additon	98	\$1,960.00
2	Megan Hanson	326 North 5th Avenue, Broken Bow, NE 68822	N 18' Lot 7, Block 1, Bishops Addition	18	\$360.00
3	Megan Hanson	326 North 5th Avenue, Broken Bow, NE 68822	Lots 8-9, Block 1, Bishops Addition	88	\$1,760.00
4	Ronald & Angela Jones	344 North 5th Avenue, Broken Bow, NE 68822	Lot 10, Block 1, Bishops Addition	66	\$1,320.00
PARCELS					
1	Larry D. & Kim Rowden	4008 N. 5th St., Broken Bow, NE 68822	Parcel NW1/4NW1/4 Sec. 33-17-20, .49 acre (159' along 5th Avenue)	159	\$3,180.00
2	Ardith Joleen McCandless Stewart	1499 Meyers Road, Broken Bow, NE 68822	Parcel NW1/4NW1/4 Sec. 33-17-20, .33 acre (128' along 5th Avenue)	128	\$2,560.00
TOTAL				3537.35	\$70,747.00



November 28, 2017

Dear Property Owner:

The City Council of the City of Broken Bow voted on November 28th, 2017 to levy special assessments for the properties located in Street Improvement Districts Nos. 2014-1 and 2014-2. Enclosed is an amortization schedule of the amount assessed on your property. This amount can be paid without interest by January 17th, 2018. If you choose to pay the assessment in installments, you will have 15 years to pay the assessment. The annual interest rate is 3.92%. The first payment is due now and will be delinquent on January 18th, 2018. The first payment is paid to the City of Broken Bow. Thereafter, the payments will be made to the Custer County Treasurer.

Sincerely,

Stephanie Wright
City Clerk

SPECIAL ASSESSMENT TAX PARCEL ID 000000000

Street Improvement District 2014-1

Ordinance 2014-21

Name of Owner(s) Assessed:

Joh Doe
123 North 107th Avenue
Broken Bow, NE 68822

Area(s) Assessed:

Lots ABC, Block 1, Good Day Addition

Assessment Values

Assessed amount	\$8,400.00
Delinquent interest rate	3.92%
Loan period in years	15
Number of payments per year	1
Levy Date	11/28/2017
50 Days after Levy Date	1/18/2018

Assessment Summary

Scheduled payment	\$751.29
Scheduled number of payments	15
Actual number of payments	1
Total early payments	\$0.00
Total interest	\$2,869.28

PMT NO	PAYMENT DATE	BEGINNING BALANCE	SCHEDULED PAYMENT	EXTRA PAYMENT	TOTAL PAYMENT	PRINCIPAL	INTEREST	ENDING BALANCE	CUMULATIVE INTEREST
1	11/28/2017	\$8,400.00	\$751.29	\$0.00	\$751.29	\$422.01	\$329.28	\$7,977.99	\$329.28
2	11/28/2018	\$7,977.99	\$751.29	\$0.00	\$751.29	\$438.55	\$312.74	\$7,539.45	\$642.02
3	11/28/2019	\$7,539.45	\$751.29	\$0.00	\$751.29	\$455.74	\$295.55	\$7,083.71	\$937.56
4	11/28/2020	\$7,083.71	\$751.29	\$0.00	\$751.29	\$473.60	\$277.68	\$6,610.10	\$1,215.25
5	11/28/2021	\$6,610.10	\$751.29	\$0.00	\$751.29	\$492.17	\$259.12	\$6,117.94	\$1,474.36
6	11/28/2022	\$6,117.94	\$751.29	\$0.00	\$751.29	\$511.46	\$239.82	\$5,606.47	\$1,714.18
7	11/28/2023	\$5,606.47	\$751.29	\$0.00	\$751.29	\$531.51	\$219.77	\$5,074.96	\$1,933.96
8	11/28/2024	\$5,074.96	\$751.29	\$0.00	\$751.29	\$552.35	\$198.94	\$4,522.62	\$2,132.90
9	11/28/2025	\$4,522.62	\$751.29	\$0.00	\$751.29	\$574.00	\$177.29	\$3,948.62	\$2,310.18
10	11/28/2026	\$3,948.62	\$751.29	\$0.00	\$751.29	\$596.50	\$154.79	\$3,352.12	\$2,464.97
11	11/28/2027	\$3,352.12	\$751.29	\$0.00	\$751.29	\$619.88	\$131.40	\$2,732.24	\$2,596.37
12	11/28/2028	\$2,732.24	\$751.29	\$0.00	\$751.29	\$644.18	\$107.10	\$2,088.05	\$2,703.48
13	11/28/2029	\$2,088.05	\$751.29	\$0.00	\$751.29	\$669.43	\$81.85	\$1,418.62	\$2,785.33
14	11/28/2030	\$1,418.62	\$751.29	\$0.00	\$751.29	\$695.68	\$55.61	\$722.95	\$2,840.94
15	11/28/2031	\$722.95	\$751.29	\$0.00	\$722.95	\$694.61	\$28.34	\$0.00	\$2,869.28

RESOLUTION NO. 2017-78

BE IT RESOLVED BY THE MAYOR AND COUNCIL OF THE CITY BROKEN BOW, NEBRASKA:

1. The Mayor and Council find and determine: That the Council has heretofore designated this time and place for considering and levying special assessments upon property specially benefited by paving improvements in Street Improvement Districts Nos. 2014-1 and 2014-2 to pay the cost of constructing same; that notice of the time and place of holding this meeting for said purpose has been duly given as provided by statute by publication in the Custer County Chief, a legal newspaper published in the City, for more than four weeks (five consecutive weekly publications) before the time designated therein for holding this meeting said publication being made in the issues of said paper published on October 26, November 2, November 9, November 16, and November 22, 2017; that the Mayor and Council have at this session heard all persons who desired to be heard in reference to the special benefits or damages thereto by reason of the construction of said improvements and with reference thereto have considered the advice of the engineer in charge of the construction of said improvements.

2. The Mayor and Council find and determine that at the hearing all assessments have been adjusted and equalized with reference to the benefits resulting from the improvements and have been apportioned among the several lots and parcels of land subject to assessment in proportion to the special benefits accrued to said lots and parcels of land respectively from such improvements; that no lot or parcel of land in said Districts has been damaged by the construction of said improvements; that the amounts of benefits specially accruing to each lot and parcel of land in said projects by reason of the construction of said paving improvements exceeds the amount assessed against each lot or parcel of land to pay the cost of said improvements. The benefits are equal and uniform and the assessments shown on the schedule hereinafter set out are according to front footage of the lots or real estate within the Districts.

3. There are hereby levied and assessed upon the several lots and parcels of land in Street Improvement Districts Nos. 2014-1 and 2014-2 special assessments to pay the cost of constructing said improvements in the amount in dollars and cents set out in the schedule below in the column headed "Special Assessments".

SCHEDULE OF ASSESSMENTS

DOWNTOWN IMPROVEMENTS - STREET IMPROVEMENT DISTRICT 2014-1 (AMENDED)

100 FOOT MAXIMUM FOOTAGE ASSESSMENT

\$84 / RUNNING FOOT BROKEN BOW, NEBRASKA JEO PROJECT NO. 141001

PARCEL NO.	NAME	ADDRESS	LEGAL DESCRIPTION	FOOTAGE	ASSESSMENT COST
BLOCK 13					
1	Bruning State Bank, Bank of Broken Bow	PO Box 545, Broken Bow, NE 68822	Lots 1-2 & East 3' Lot 3, Block 13, Original Town	60'	\$5,040.00
2	Bruning State Bank, Bank of Broken Bow	PO Box 545, Broken Bow, NE 68822	Lot 3 Ex. East 3', Block 13, Original Town		
3	Adam & Jamie Bartak	80474 E. Table Rd., Merna, NE 68856	Lot 4, Block 13, Original Town	20'	\$1,680.00
4	Patricia & Timothy Thomas, c/o Custer Floral	821 S. D Street, Broken Bow, NE 68822	Lots 5-6, Block 13, Original Town	40'	\$3,360.00
5	Janet M. & Thomas R. Loughran	827 S. D Street, Broken Bow, NE 68822	Lot 7, Block 13, Original Town	20'	\$1,680.00
6	Shirley & Charles McGinn	833 S. D Street, Broken Bow, NE 68822	Lot 8, Block 13, Original Town	20'	\$1,680.00
7	Nebraska Conference of 7th Day Adventists	77170 Hwy 40, Eddyville, NE 68834	Lot 9, Block 13, Original Town	20'	\$1,680.00
8	Travis & Jillana Barker	1434 South H Street, Broken Bow, NE 68822	Lot 10, Block 13, Original Town	20'	\$1,680.00
9	BAM Development Group, c/o Bill Butler	2268 Memorial Drive, Broken Bow, NE 68822	Lot 11, Block 13, Original Town	100'	\$8,400.00
BLOCK 6					
1	Custer County	431 S. 10th Avenue, Broken Bow, NE 68822	All Block 6, Original Town	100'	\$8,400.00
BLOCK 3					
1	Regina Michelle Albus	1910 Westridge Drive, Broken Bow, NE 68822	Lot 6, Block 3, Original Town	20'	\$1,680.00
2	Dick A. & Jodene R. Taylor	79559 Sumner Road, Broken Bow, NE 68822	Lot 7, Block 3, Original Town	20'	\$1,680.00
3	Orval L. & Judith D. Moninger	722 N. 9th Avenue, Broken Bow, NE 68822	Lot 8, Block 3, Original Town	20'	\$1,680.00
4	Bow Tax & Accounting Inc.	430 South 8th Avenue, Broken Bow, NE 68822	Lot 9, Block 3, Original Town	20'	\$1,680.00
5	Gordon & Pauline Gaasch	PO Box 182, Broken Bow, NE 68822	Lot 10, Block 3, Original Town	20'	\$1,680.00
6	Security State Bank	PO Box 400, Ansley, NE 68814	Lots 11-12, Block 3, Original Town	40'	\$3,360.00
7	Corey & Kim Clay	416 S. 8th Avenue, Broken Bow, NE 68822	Lot 13, Block 3, Original Town	20'	\$1,680.00
8	Jeffrey W. & Kelly K. Sanger	PO Box 183, Broken Bow, NE 68822	Lots 14-16, Block 3, Original Town	60'	\$5,040.00

DOWNTOWN IMPROVEMENTS - STREET IMPROVEMENT DISTRICT 2014-1
100 FOOT MAXIMUM FOOTAGE ASSESSMENT
\$84 / RUNNING FOOT BROKEN BOW, NEBRASKA JEO PROJECT NO. 141001

PARCEL NO.	NAME	ADDRESS	LEGAL DESCRIPTION	FOOTAGE	ASSESSMENT COST
BLOCK 13					
1	Bruning State Bank, Bank of Broken Bow	PO Box 545, Broken Bow, NE 68822	Lots 1-2 & East 3' Lot 3, Block 13, Original Town	60'	\$5,040.00
2	Bruning State Bank, Bank of Broken Bow	PO Box 545, Broken Bow, NE 68822	Lot 3 Ex. East 3', Block 13, Original Town		
3	Adam & Jamie Bartak	80474 E. Table Rd., Merna, NE 68856	Lot 4, Block 13, Original Town	20'	\$1,680.00
4	Patricia & Timothy Thomas, c/o Custer Floral	821 S. D Street, Broken Bow, NE 68822	Lots 5-6, Block 13, Original Town	40'	\$3,360.00
5	Janet M. & Thomas R. Loughran	827 S. D Street, Broken Bow, NE 68822	Lot 7, Block 13, Original Town	20'	\$1,680.00
6	Shirley & Charles McGinn	833 S. D Street, Broken Bow, NE 68822	Lot 8, Block 13, Original Town	20'	\$1,680.00
7	Nebraska Conference of 7th Day Adventists	77170 Hwy 40, Eddyville, NE 68834	Lot 9, Block 13, Original Town	20'	\$1,680.00
8	Travis & Jillana Barker	1434 South H Street, Broken Bow, NE 68822	Lot 10, Block 13, Original Town	20'	\$1,680.00
9	BAM Development Group, c/o Bill Butler	2268 Memorial Drive, Broken Bow, NE 68822	Lot 11, Block 13, Original Town	100'	\$8,400.00
BLOCK 6					
1	Custer County	431 S. 10th Avenue, Broken Bow, NE 68822	All Block 6, Original Town	100'	\$8,400.00
BLOCK 3					
1	Regina Michelle Albus	1910 Westridge Drive, Broken Bow, NE 68822	Lot 6, Block 3, Original Town	40'	\$3,360.00
2	Dick A. & Jodene R. Taylor	79559 Sumner Road, Broken Bow, NE 68822	Lot 7, Block 3, Original Town	20'	\$1,680.00
3	Orval L. & Judith D. Moninger	722 N. 9th Avenue, Broken Bow, NE 68822	Lot 8, Block 3, Original Town	20'	\$1,680.00
4	Bow Tax & Accounting Inc.	430 South 8th Avenue, Broken Bow, NE 68822	Lot 9, Block 3, Original Town	20'	\$1,680.00
5	Gordon & Pauline Gaasch	PO Box 182, Broken Bow, NE 68822	Lot 10, Block 3, Original Town	20'	\$1,680.00
6	Security State Bank	PO Box 400, Ansley, NE 68814	Lots 11-12, Block 3, Original Town	40'	\$3,360.00
7	Corey & Kim Clay	416 S. 8th Avenue, Broken Bow, NE 68822	Lot 13, Block 3, Original Town	20'	\$1,680.00
8	Jeffrey W. & Kelly K. Sanger	PO Box 183, Broken Bow, NE 68822	Lots 14-16, Block 3, Original Town	60'	\$5,040.00

BLOCK 28					
PARCEL NO.	NAME	ADDRESS	LEGAL DESCRIPTION	FOOTAGE	ASSESSMENT COST
1	James Len Girardin	951 S. 1st Avenue, Broken Bow, NE 68822	A parcel of land commencing at a point one hundred six (106) feet North of the Southwest corner of Block 28, Original Town of Broken Bow, Nebraska; thence running East 112 feet; thence North 54 feet; thence West 112 feet; thence South 54 feet to the point of beginning. Containing. 14 acres, more or less; A parcel of land commencing at a point 72 feet North of the Southwest corner of Block 28, Original Town of Broken Bow, Nebraska ; thence running East 112 feet; thence North 34 feet; thence West 112 feet; thence South 34 feet to the point of beginning. Containing .09 aces, more or less. A tract of land described as follows, to-wit; Beginning at a point 160 feet north of the Southwest corner of Block 28 in the Original Town of Broken Bow in Custer County, Nebraska, running thence East 112 feet; thence North 30 feet; thence West 112 feet; thence	100'	\$8,400.00
2	Michael S. & Amber E. Evans, c/o Evans Feed Co., Inc.	PO Box 156, Broken Bow, NE 68822	A tract of land in Block 28, of the Original Town of Broken Bow, Nebraska, commencing at the Southwest corner of said Block 28, running thence North 72 feet; thence East 112 feet; thence South 72 feet; thence West 112 feet to the place of beginning.	72'	\$6,048.00
BLOCK 21					
1	Evans Feed Co., Inc.	PO Box 156, Broken Bow, NE 68822	Parts of Lots 1-2, Lots 3-6 and South 72' Lots 9-12, Block	100'	\$8,400.00
BLOCK 11					
1	White House Rentals, LLC	PO Box 586, Broken Bow, NE 68822	East 59.5' of South 22'6" Lot 1, Original Town	22.50'	\$1,890.00
2	Custer Federal State Bank	PO Box 310, Broken Bow, NE 68822	North 13'5" Lot 1, All Lot 2, South 6' Lot 3, Original Town	89.50'	\$7,518.00
3	Custer Federal State Bank	PO Box 310, Broken Bow, NE 68822	Lot 3 Ex. S. 6', All of Lot 4, Original Town		

PARCEL NO.	NAME	ADDRESS	LEGAL DESCRIPTION	FOOTAGE	ASSESSMENT COST
4	HPC of NE, Inc. d/b/a Custer County Chief	305 S. 10th Avenue, Broken Bow, NE 68822	Lot 13, North 10' Lot 14, Original Town	32.4'	\$2,721.60
5	HPC of NE, Inc. d/b/a Custer County Chief	305 S. 10th Avenue, Broken Bow, NE 68822	South 12' Lot 14, Lot 15, Block 11, Original Town	34.8'	\$2,923.20
6	The Vulpes Corp, Inc. c/o Tiffany Theater	317 South 10th Avenue, Broken Bow, NE 68822	Lots 16-17, Block 11, Original Town	44.8'	\$3,763.20
STREET RIGHT OF WAY					
1	William V. & Corrine Steffens Trust	1903 Westridge Drive, Broken Bow, NE 68822	Parcel between Block 11 & 22, Original Town	80'	\$6,720.00
BLOCK 22					
1	Shirley Sylvie McGinn	42183 Rifle Creek Road, Anselmo, NE 68813	Lots 3-4 North of Creek, Lots 5-8, 1/2 Vacated Street Block 22, Original Town	100'	\$8,400.00
2	City of Broken Bow	PO Box 504, Broken Bow, NE 68822	South 46' of East 110' Lots 1-2, Block 22, Original Town	68'	\$5,712.00
3	City of Broken Bow	PO Box 504, Broken Bow, NE 68822	North 22' of South 68' of Lots 1-2, Block 22, Original Town		
BLOCK 27					
1	James Len Girardin	951 S. 1st Avenue, Broken Bow, NE	Parcel in E1/2 Block 27, Original Town (80' x 120')	80'	\$6,720.00
2	City of Broken Bow	PO Box 504, Broken Bow, NE 68822	Parcels 5-6, Block 27 (110' x 120')	100'	\$8,400.00
BLOCK 12					
1	Great Western Bank Attn: Accounting	100 N. Phillips Avenue, Sioux Falls, SD 57104	Lots 1-4, Block 12, Original Town	100'	\$8,400.00
2	City of Broken Bow	PO Box 504, Broken Bow, NE 68822	Lots 12-16, Block 12, Original Town	100'	\$8,400.00
3	Nebraska State Bank	PO Box 688, Broken Bow, NE 68822	Lots 17-21, Block 12, Original Town	100'	\$8,400.00
BLOCK 5					
1	Custer County Historial Society	PO Box 334, Broken Bow, NE 68822	Lots 1-2, Block 5, Original Town	43.64'	\$3,665.76
2	Anderson, Arthur J. Rev. Trust Anderson, Dianne K. Rev. Trust	45600 Hwy 70, Arcadia, NE 68815	Lot 3, Block 5, Original Town	21.82'	\$1,832.88
3	HAKO LLC	80445 Rd 431, Merna, NE 68856	Lots 4-5, Block 5, Original Town	43.64'	\$3,665.76
4	Betty J. Hunt	837 N. 13th Avenue, Broken Bow, NE 68822	Lot 6, Block 5, Original Town	21.82'	\$1,832.88
5	Irish Heritage, LLC Michael J. Downey c/o	PO Box 107, Benkelman, NE 69021	Lot 7, Block 5, Original Town	21.82'	\$1,832.88
6	Crystal Esch and Natasha L. Dalby	80451 Round Valley Road, Broken Bow, NE 68822	Lot 8, Block 5, Original Town	21.82'	\$1,832.88
7	Carl D. & Carol L. Christen	1349 N. M Street, Broken Bow, NE 68822	Lot 9, Block 5, Original Town	21.82'	\$1,832.88
8	Norman & Amy Sillivan	407 South 9th Avenue, Broken Bow, NE 68822	Lot 10, Block 5, Original Town	21.82'	\$1,832.88

PARCEL NO.	NAME	ADDRESS	LEGAL DESCRIPTION	FOOTAGE	ASSESSMENT COST
9	Custer County Foundation, Inc.	P.O. Box 304, Broken Bow, NE 68822	East 70' 2.5 Lot 11, Block 5, Original Town	92.03'	\$7,730.52
10	Tim L. & Carolyn Lee Troxel	44942 Hwy 70, Berwyn, NE 68814	West 41'9.5 Lot 11, Block 5, Original Town	41.79'	\$3,510.36
11	Douglas A. Stewart & Radine Fiorelli Stewart	926 S. D Street, Broken Bow, NE 68822	Lots 12-13, Block 5, Original Town	44.8'	\$3,763.20
12	Michael Borders	PO Box 133, Broken Bow, NE 68822	Lot 14, Block 5, Original Town	22.4'	\$1,881.60
13	Michael S. & Allison M. Borders	PO Box 133, Broken Bow, NE 68822	Lot 15, Block 5, Original Town	22.4'	\$1,881.60
14	Paul A. & Connie Ulmer	80797 Lillian Road, Broken Bow, NE 68822	Lot 16, Block 5, Original Town	100'	\$8,400.00
15	Breanna & Zachary Bartak	42276 Rd 802, Merna, NE 68856	North 24' Lots 17-21, Original Town	24'	\$2,016.00
16	Michael & Amber Evans	PO Box 156, Broken Bow, NE 68822	South 88' of Lots 17-18, Block 5, Original Town	88'	\$7,392.00
ADDITIONS					
BLOCK 104					
1	Girardin Ventures, LLC	126 North 10th Avenue, Broken Bow, NE 68822	Lots 1-4, Block 104, Railroad Add	100'	\$8,400.00
BLOCK 105					
1	Arrow Seed	126 North 10th Avenue, Broken Bow, NE 68822	Lots 6-10, Block 105, Railroad Add	100'	\$8,400.00
TOTAL NON CITY				2550.02'	\$205,768.08
TOTAL CITY				268'	\$22,512.00

5th AVENUE - SOUTH E STREET (HIGHWAY 2) TO MEMORIAL DRIVE
STREET IMPROVEMENT DISTRICT 2014-2
ASSESSMENT SCHEDULE
\$20.00 / RUNNING FOOT BROKEN BOW, NEBRASKA JEO PROJECT NO. 100118

PARCEL NO.	NAME	ADDRESS	LEGAL DESCRIPTION	FOOTAGE	ASSESSMENT COST
ORIGINAL TOWN					
1	Peggy Reiser	511 S. E, Broken Bow, NE 68822	Lots 1-2, Block 1, Original Town	112	\$2,240.00
2	Douglas Family Trust Co-Treas: Penny D. & Fred A. Douglas	712 Avondale Street, Broken Bow, NE 68822	Lots 3-4 & East 10' Lot 5, Block 1, Original Town		
3	Elizabeth Mosher	420 N. 11th St., Broken Bow, NE 68822	Lot 5 Ex. E 10', Lot 6, E1/2 Lot 7, Block 1, Original Town		
4	Chad & Megan Hempstead	522 South D Street, Broken Bow, NE 68822	E 10' Lot 14 & Lots 15-16, Block 1, Original Town		
5	Raymond Brown	80116 Seven Mile Avenue, Arcadia, NE 68815	Lots 17-18, Block 1, Original Town	112	\$2,240.00
6	Matthew J. Wright	335 S. 10th St., Broken Bow, NE 68822	E1/2 Lot 1, Block 16, Original Town	112	\$2,240.00
7	Ericstar Properties LLC	PO Box 1949, North Platte, NE 69103	W1/2 Lot 1, Block 16, Orignal Town		
8	Opportunity Land Investments, LLC c/o Christopher Myers	720 Pawnee Lane, Broken Bow, NE 68822	Lots 2-4, Block 16, Original Town		
9	Opportunity Land Investments, LLC c/o Christopher Myers	720 Pawnee Lane, Broken Bow, NE 68822	Lots 7-8, Block 16, Original Town	112	\$2,240.00
10	Randall L. & Amy White	509 S. C St., Broken Bow, NE 68822	Lots 1-2, Block 17, Original Town	112	\$2,240.00
11	Anthony & Kristi Sanchez	1321 N. B St., Broken Bow, NE 68822	Lot 7, Block 17, Original Town		
12	Carissa J. Flenniken & Jeffrey White	79681 Dutchman Valley Road, Broken Bow, NE 68822	Lot 8, Block 17, Original Town	112	\$2,240.00
13	Cecil Burt, Jr.	534 S. 6th Avenue, Broken Bow, NE 68822	Parcel in Block 32, Original Town	78	\$1,560.00
14	Tim and Patricia Thomas	1299 Airport Road, Broken Bow, NE 68822	Parcel in Block 32, Original Town	62	\$1,240.00
GROATS ADDITION					
1	Wayne, Larry, & Donna Fisher	417 N 5th St., Broken Bow, NE 68822	Lot 1 and N1/2 Lot 2, Block 69, Groats Addition	72	\$1,440.00
2	Larry & Donna Fisher	417 N. 5th St., Broken Bow, NE 68822	S1/2 Lot 2, Lot 3 and N36' Lot 4, Block 69, Groats Addition	108	\$2,160.00
3	Brandon Hoffman	984 Preakness Cit, Deland, FL 32724	S12' Lot 4 and All Lot 5, Block 69, Groats Addition	60	\$1,200.00
4	Robert & Susan Rose	343 N. 5th St., Broken Bow, NE 68822	Lots 1-2 and N1/2 Lot 3, Block 84, Groats Addition	120	\$2,400.00

PARCEL NO.	NAME	ADDRESS	LEGAL DESCRIPTION	FOOTAGE	ASSESSMENT COST
5	Opportunity Land Investments, LLC c/o Christopher Myers	720 Pawnee Lane, Broken Bow, NE 68822	S1/2 Lot 3 and All Lots 4-5, Block 84, Groats Addition	120	\$2,400.00
6	Delbert Porter	502 N. C St., Broken Bown, NE 68822	E60' Lots 1-2, & E60' N1/2 Lot 3, Block 93, Groats Addition	120	\$2,400.00
7	Opportunity Land Investments, LLC c/o Christopher Myers	720 Pawnee Lane, Broken Bow, NE 68822	W72' Lots 1-2 & W72' N1/2 Lot 3, Block 93, Groats Addition		
8	City of Broken Bow	P.O. Box 504, Broken Bow, NE 68822	S1/2 Lot 3 & All Lot 4, Block 93, Groats Addition	72	\$1,440.00
9	City of Broken Bow	P.O. Box 504, Broken Bow, NE 68822	Lot 5, Block 93, Groats Addition	48	\$960.00
10	Trotter, Inc.	PO Box 158, Arcadia, NE 68815	Lots 1-2, Block 108, Groats Addition	96	\$1,920.00
11	Wendell & Kathy Brott	41041 Road 761, PO Box 285, Gothenburg, NE 69138	Lots 3 & 6 + vacated alley between Lots 7-8, Block 108, Groats Addition	48	\$960.00
12	Wendell & Kathy Brott	41041 Road 761, PO Box 285, Gothenburg, NE 69138	IOLL: Pens/Fence: Railroad Addition Block 106 & Groats Blocks 107-108		
MAULICK'S ADDITION					
1	Douglas & Sheila Staab	44010 Memorial Drive, Broken Bow, NE 68822	Lot 1, Block 1, Maulick's Addition	112	\$2,240.00
2	Christine M. Cooley	435 S. E St., Broken Bow, NE 68822	Lot 2, Block 1, Maulick's Addition		
3	Mary Katherine Price	427 S. E St., Broken Bow, NE 68822	Lot 3, Block 1, Maulick's Addition		
4	Edward & Michele Staggs	416 S. D St., Broken Bow, NE 68822	W38.51' Lot 8, All Lots 9-10, E 3'4 Lot 11, Block 1, Maulick's Addition		
5	Lanny Dainton	349 S. H St., Broken Bow, NE 68822	W38-1/3' of N62' Lot 11 & N62' Lot 12, Block 1, Maulick's Addition	62	\$1,240.00
6	Theresa Cheryl Sharp	418 S. 5th St., Broken Bow, NE 68822	S50' Lot 11 Ex. E 3-1/3', S 50' Lot 12, Block 1, Maulick's Addition	50	\$1,000.00
7	William & Miche Rowell	441 S. D St., Broken Bow, NE 68822	Lots 1-2, Block 8, Maulick's Additon	112	\$2,240.00
8	Opportunity Land Investments, LLC c/o Christopher Myers	720 Pawnee Lane, Broken Bow, NE 68822	Lots 3-4 & W28'4" Lot 5, Block 8, Maulick's Addition		
9	Province Plumbing & Heating Co.	PO Box 382, Broken Bow, NE 68822	Lot 9 & Lot 10 Ex. W 10.34', Block 8, maulick's Addition		
10	Province Plumbing & Heating Co.	PO Box 382, Broken Bow, NE 68822	W 10.34' Lot 10 & E 11.7' Lot 11, Block 8, Maulick's Addition		
11	Gene & Laura Hendricks	310 S. 5th St., Broken Bow, NE 68822	Lot 11 Ex. W 10' & Ex. E 10.34', Block 8, Maulick's Addition		
12	Gene & Laura Hendricks	310 S. 5th St., Broken Bow, NE 68822	W 10' Lot 11 & All Lot 12, Block 8, Maulick's Addition	112	\$2,240.00

PARCEL NO.	NAME	ADDRESS	LEGAL DESCRIPTION	FOOTAGE	ASSESSMENT COST
13	David & Tammy Hendrickson	733 N. 13th Avenue, Broken Bow, NE 68822	Lots 1-3, Block 9, Maulick's Addition	112	\$2,240.00
14	Dell Done Wright Water, Inc.	PO Box 361, Broken Bow, NE 68822	N72' Lots 11-12, N88' of E25' Lot 10, N72' of W 16.8' Lot 10, Block 9, Maulick's Addition	72	\$1,440.00
15	Ardith Joleen McCandless Stewart Rev. Trust	1499 Myers Road, Broken Bow, NE 68822	Parcel in Lots 10-12, Block 9, Maulick's Additon	40	\$800.00
16	Wendell & Kathy Brott	41041 Road 761, PO Box 285, Gothenburg, NE 69138	Lots 1-12 Ex. Parcel to the City, Block 16, Maulick's Additon	184	\$3,680.00
PARCELS					
1	Broken Bow Christian Life Center	204 N. 5th St., PO Box 124, Broken Bow, NE 68822	Parcels NW1/4NW1/4 Sec. 33-17-20 .69 Acres (238.45' along 5th Avenue)	238.45	\$4,769.00
2	Wanda L. S. Melville Rev. Trust	PO Box 297, Broken Bow, NE 68822	Parcels NW1/4NW1/4 Sec. 33-17-20 1.73 acres (209.9' along 5th Avenue)	209.9	\$4,198.00
BISHOP ADDITION					
1	Barbara Koch Bacon & Harold Koch	302 N. 5th St., Broken Bow, NE 68822	Lot 6 & S 30' Lot 7 & N1/2 Vac. Street, Block 1, Bishops Additon	98	\$1,960.00
2	Megan Hanson	326 North 5th Avenue, Broken Bow, NE 68822	N 18' Lot 7, Block 1, Bishops Addition	18	\$360.00
3	Megan Hanson	326 North 5th Avenue, Broken Bow, NE 68822	Lots 8-9, Block 1, Bishops Addition	88	\$1,760.00
4	Ronald & Angela Jones	344 North 5th Avenue, Broken Bow, NE 68822	Lot 10, Block 1, Bishops Addition	66	\$1,320.00
PARCELS					
1	Larry D. & Kim Rowden	4008 N. 5th St., Broken Bow, NE 68822	Parcel NW1/4NW1/4 Sec. 33-17-20, .49 acre (159' along 5th Avenue)	159	\$3,180.00
2	Ardith Joleen McCandless Stewart	1499 Meyers Road, Broken Bow, NE 68822	Parcel NW1/4NW1/4 Sec. 33-17-20, .33 acre (128' along 5th Avenue)	128	\$2,560.00
TOTAL				3537.35	\$70,747.00

4. Said special assessments shall be a lien on the property on which they are levied from the date of the passage of this resolution and shall be certified by the City Clerk to the Treasurer of this City for collection; that the City Clerk shall also at the time provided by law cause such assessments or the portion thereof then remaining unpaid to be certified to the City Treasurer for entry upon the proper tax list; that said assessments shall be payable to and collected by the City Treasurer.

5. Said assessments are payable in fifteen equal installments, the first of which shall become delinquent not less than fifty (50) days from the date of adoption of the resolution, and the remaining installments shall become delinquent the 18th day of January 2018, subsequent to the date of levy and thereafter, in one, two, three, four, five, six, seven, eight, nine, ten, eleven, twelve, thirteen and fourteen years respectively; that each of said installments shall draw interest from the date of the passage of this resolution at the rate of three and ninety-two hundredths per centum (3.92%) per annum, until the same become delinquent, and after the same become delinquent interest at the rate specified by law for delinquent special assessments for such projects shall be paid thereon; provided all said assessments may be paid at one time on any lot or land within fifty (50) days from the date of levy without interest.

PASSED AND APPROVED this 28th day of November, 2017.

ATTEST:

Cecil Burt, Mayor

Stephanie Wright, City Clerk

(S E A L)

RESOLUTION 2017-79

**RESOLUTION AUTHORIZING PAYMENT TO
CENTRAL NEBRASKA ELECTRIC, INC.**

BE IT RESOLVED BY THE MAYOR AND COUNCIL OF THE CITY OF
BROKEN BOW, NEBRASKA:

WHEREAS, Central Nebraska Electric, Inc. has submitted an Invoice for Payment
for the Voice/Data Cabling at the Broken Bow Library in the amount of \$15,109.75.

NOW, THEREFORE, BE IT RESOLVED, by the Mayor and City Council of
Broken Bow, Nebraska: authorizing the City to sign all necessary documentation for
payment and to pay Central Nebraska Electric, Inc. in the amount of \$15,109.75 for
Voice/Data Cabling.

PASSED AND APPROVED this 28th day of November, 2017.

Cecil Burt, Mayor

ATTEST:

Stephanie M. Wright, City Clerk

(S E A L)

Central Nebraska Electric, Inc.

P.O. Box 443
Ansley, NE 68814

Invoice

Date	Invoice #
11/7/2017	1762

Bill To
City of Broken Bow P.O. Box 504 Broken Bow, NE 68822

P.O. No.	Terms	Job Number
	Net 30	17-02057

Description	Qty	Amount
Work Completed to Date on Broken Bow Public Library - Voice/Data Cabling at 75% Complete - Rough In and Head End Termination		14,829.75
Additional Sound/Video Wall Rough In for 2 Locations in Multi Purpose Rooms A & B		200.00
Additional 110V Outlet for Sprinkler System Controller in Mech Room #119 (per Darren Marten)		80.00

Thank you for your business.

Sales Tax. \$0.00

Total \$15,109.75

Payments/Credits \$0.00

Balance Due \$15,109.75

RESOLUTION 2017-80

**RESOLUTION AUTHORIZING AN AGREEMENT
BETWEEN NEBRASKA DEPARTMENT OF
TRANSPORTATION AND CITY OF BROKEN BOW**

BE IT RESOLVED BY THE MAYOR AND COUNCIL OF THE CITY OF BROKEN BOW, NEBRASKA:

WHEREAS, the City of Broken Bow installed rectangular rapid flashing beacons along Highway 2 and Highway 21 and the Nebraska Department of Transportation requires an agreement with the City to maintain the beacon systems;

NOW, THEREFORE, BE IT RESOLVED, by the Mayor and Council of the City of Broken Bow that the attached agreement with the Nebraska Department of Transportation be adopted.

PASSED AND APPROVED this 28th day of November 2017.

Cecil Burt, Mayor

ATTEST:

Stephanie M. Wright, City Clerk

(S E A L)

MUNICIPALITY PROGRAM AGREEMENT
STATE PROJECTS

CITY OF BROKEN BOW
STATE OF NEBRASKA, DEPARTMENT OF TRANSPORTATION
RECTANGULAR RAPID FLASHING BEACON INSTALLATION

THIS AGREEMENT is between City of Broken Bow, a municipal corporation of the State of Nebraska ("Municipality"), and State of Nebraska, Department of Transportation ("State"), collectively referred to as the "Parties".

WITNESSETH:

WHEREAS, Highway N-2 enters and traverses the Municipality on South E Street and Highway N-21 enters and travels the Municipality on 8th Avenue, and

WHEREAS, the Municipality has proposed to install Rectangular Rapid Flashing Beacons (RRFB) systems on Highway N-2 at the intersection of N-2 and 6th Avenue (R.P. 278+86) and on Highway N-21 at the intersection of N-21 and "G" Street (R.P. 73+51); and

WHEREAS, the State is provided with total jurisdiction in matters involving the installation and operation of Traffic Control devices on State Highway extensions through such corporate areas as provided by Neb.Rev.Stat. §60-6,120; and

WHEREAS, State agrees to allow Municipality to install, operate and maintain RRFB systems on Highway N-2 and Highway N-21 based on the conditions set out in this Agreement, and

WHEREAS, the cost of such installation, and the liability arising out of the installation, operation, and maintenance thereof, will be the sole responsibility of the Municipality; and

WHEREAS, Federal Regulations provide that Municipality shall not profit or otherwise gain from local property assessments that exceed Municipality share of project costs; and

WHEREAS, it is the desire of the Municipality that said RRFB beacon systems be installed and City Council has authorized the Mayor to sign this Agreement as evidenced by the Resolution of the City Council attached as Exhibit "A".

NOW THEREFORE, in consideration of these facts and the mutual promises of the Parties hereto, the Parties agree as follows:

SECTION 1. The State agrees to provide design standards and specifications for the proposed installation, as shown on Exhibit "B", attached and incorporated herein by the reference, at no cost to the Municipality. The State agrees to provide an Approved Products List of RRFB

systems that conform to the State standards and specifications, as shown on Exhibit "C", attached and incorporated herein by the reference.

SECTION 2. The State agrees to provide all necessary signs associated with the proposed installation at no cost to the Municipality. The Municipality agrees to maintain the crosswalk marking in good condition at no cost to the State.

SECTION 3. The Municipality agrees to furnish and install or cause to be furnished and installed all materials and miscellaneous items required to complete the subject RRFB systems, all at no cost to the State, as evidenced by the Resolution of the City Council attached as Exhibit "A", and incorporated herein by this reference.

SECTION 4. If the Municipality performs any part of the work on this project itself, the Municipality agrees to abide by the provisions of the Nebraska Fair Employment Practices Act as provided by Neb.Rev.Stat. §48-1101 through 48-1126.

SECTION 5. The Municipality agrees to operate, maintain, and keep in good repair the entire RRFB systems and to assume at its own cost all power required for its operation. All repair or replacement parts and materials used in the maintenance of the RRFB systems shall comply with State specifications and standards

SECTION 6. The Municipality agrees to set the RRFB systems to the Wig-Wag Plus Simultaneous (WW+S) flash pattern as defined by the Federal Highway Administration.

SECTION 7. The Municipality agrees to remove the RRFB equipment if conditions change and the RRFB systems are no longer considered warranted by the State. The Municipality will retain ownership of the RRFB systems if such system is removed.

SECTION 8. The City Council has authorized the Mayor to sign this Agreement, as evidenced by the Resolution of the City Council, attached as Exhibit "A" and incorporated herein by this reference.

SECTION 9. This Agreement, and any supplements hereto, constitutes the entire agreement of the Parties. There are no promises, terms, conditions, or obligations other than contained herein, and this Agreement supersedes all previous communications, representations, or other agreements or contracts, either oral or written hereto.

IN WITNESS WHEREOF, the Parties hereby execute this agreement pursuant to lawful authority as of the date signed by each party.

EXECUTED by City this 28th day of November, 2017.

WITNESS:

CITY OF BROKEN BOW

City Clerk

Mayor

EXECUTED by State this _____ day of _____, 2017.

STATE OF NEBRASKA
DEPARTMENT OF TRANSPORTATION
Daniel J. Waddle, P.E.

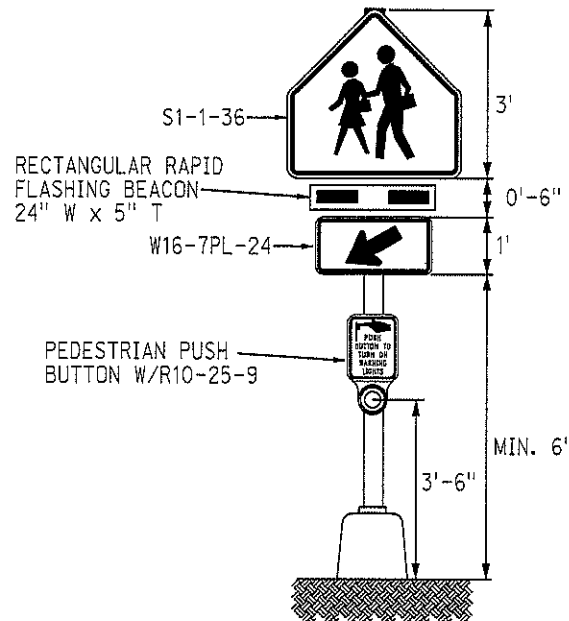
Traffic Engineer

RECOMMENDED:
Gary Thayer, P.E.

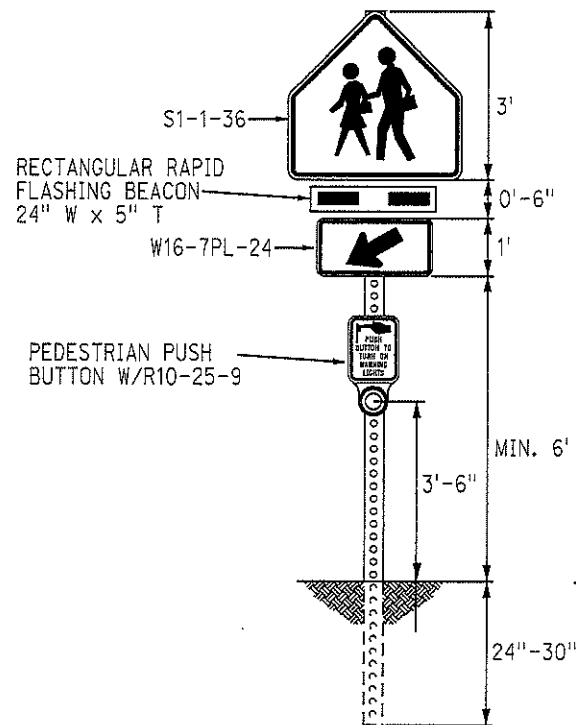
District 6 Engineer

Exhibit B

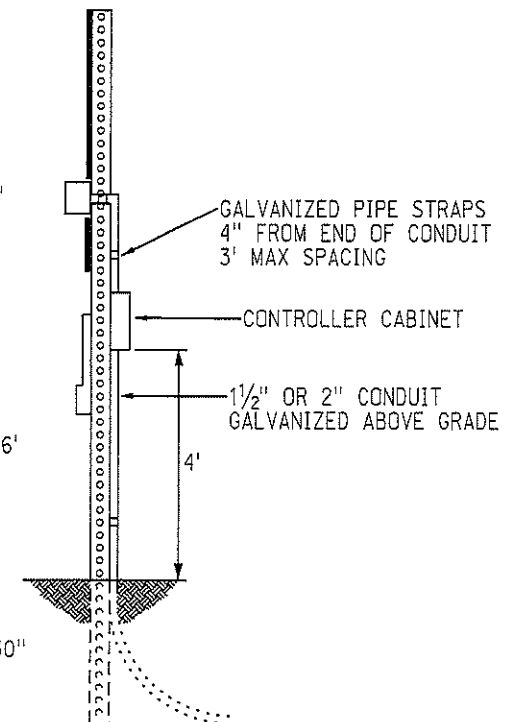
PROJECT NO. _____ SHEET NO. _____
C.R.



PEDESTAL POLE MOUNTED BEACON DETAILS



TELESPAR MOUNTED BEACON DETAILS



NEBRASKA DEPARTMENT OF TRANSPORTATION TRAFFIC ENGINEERING DIVISION
RECTANGULAR RAPID FLASHING BEACON
SCHOOL CROSSING

TRAFFIC ENGINEERING DIVISION

COMPUTER

USER

DATE

CONSTRUCTION
SCALE

Rectangular Rapid Flashing Beacons (RRFB)

Updated on 2-10-16

PRODUCT	MANUFACTURER
R920 Series Rectangular Rapid Flashing Beacon SC315 Series Rectangular Rapid Flashing Beacon	Carmanah Technologies Corp.
Rectangular Rapid Flashing Beacon (RRFB) System	Electrotechnics Corporation (ELTEC)
LaneLight RRFB	Intelligent Traffic Equipment Marketing Ltd.
Rectangular Rapid Flashing Beacon AB-9205 Rectangular Rapid Flashing Beacon AB-9405	JSF Technologies
Rectangular Rapid Flashing Beacon LGS-RRFB-F Rectangular Rapid Flashing Beacon LGS-RRFB-FS Rectangular Rapid Flashing Beacon LGS-WRRFB-F	Light Guard Systems, Inc.
Rectangular Rapid Flashing Beacon: RRFB-XL2 Rectangular Rapid Flashing Beacon: RRFB-XL2-110VAC	Traffic & Parking Control Co., Inc. (TAPCO)

EXHIBIT "C"
Sheet 1 of 1

[Return to Agenda](#)

RESOLUTION 2017-81

**RESOLUTION AUTHORIZING PAYMENT TO
WESTBROOK AUDIO**

BE IT RESOLVED BY THE MAYOR AND COUNCIL OF THE CITY OF
BROKEN BOW, NEBRASKA:

WHEREAS, Westbrook Audio has submitted an Invoice for Payment for the
Audio Equipment at the Broken Bow Library in the amount of \$8,153.00

NOW, THEREFORE, BE IT RESOLVED, by the Mayor and City Council of
Broken Bow, Nebraska: authorizing the City to sign all necessary documentation for
payment and to pay Westbrook Audio in the amount of \$8,153.00 for audio equipment.

PASSED AND APPROVED this 28th day of November, 2017.

Cecil Burt, Mayor

ATTEST:

Stephanie M. Wright, City Clerk

(S E A L)

Westbrook Audio
105 W. Jefferson Ave.
Arnold, Ne., 69120

Broken Bow Library
626 So. D Street
Broken Bow, Ne., 68822

1—Allen & Heath W24 Console-----	1210.00
1—Middle Atlantic equipment rack with locking doors-----	750.00
12--JBL Control 47C/T Ceiling Speakers—10.5" deep-----each 260.00-----	3120.00
1—QSC ISA500TI Amplifier-----	850.00
1—Dual Channel 31band Equalizer---DBX231S-----	250.00
2—Hand Held wireless microphones—BLX4R Shure with Beta58 mic.-----each 490.00-----	980.00
1—AC Power conditioner-----	180.00
250ft. 14 gauge speaker wire-----	263.00
800ft. 22 gauge microphone wire-----	480.00
2—Wall Plates /4 female LRR microphone jacks-----	70.00

Total equipment: \$8,153.00 half/ \$4100.00

We require half of the equipment cost up front before we can place an order.

There will be miscellaneous charges of conduit, hardware and freight. All of this is charged at cost.

Labor is \$65.00 per hour and charged accordingly. Estimated labor is three days or 24 hours. There will also be a mileage charge for each trip.

You will be invoiced for the entire install less the initial check, when it is completed.