

CITY OF BROKEN BOW
CITY COUNCIL AGENDA
June 27th, 2017 @ 12:00 NOON
City Hall Council Chambers
314 South 10th Avenue, Broken Bow, NE

Call to Order

A. Roll Call

B. Pledge of Allegiance

C. Open Meeting Law: A current copy of the Open Meetings Act is posted on the North wall in the rear of the Council Chambers and is available for review by all citizens in attendance.

D. Consent Agenda: The Mayor & Council will review and may or may not approve the consent agenda items for June 27th, 2017, which will include the following:

a. Approval of Minutes of June 13th, 2017 Council Meeting [Hyperlink](#)

b. Approval of Bills as Posted [Hyperlink](#)

E. Other Communications:

a. Police Officer Oath – David Taylor will take the police officer oath.

b. Black Hills Energy Update – Melissa Garcia will give an update from Black Hills Energy.

c. Mayor and Council Wages – The Mayor and Council will discuss the current Mayor and Council Wages. [Hyperlink](#)

F. Old Business:

a. Natural Landscape Yard Designation Guidelines – May or may not vote to approve the guidelines for a natural landscape yard designation. [Hyperlink](#)

b. Bid Acceptance for 503 North C Street – May or may not vote to accept a bid from Opportunity Land Investments, LLC. to purchase the property located at 503 North C Street for \$22,550.00. [Hyperlink](#)

c. Bid Acceptance for Underground Irrigation at Three NIFA Houses – May or may not vote to accept a bid from Instant Rain Lawn Irrigation for the installation of underground irrigation and seeding at the three NIFA houses in the amount of \$9,360.00. [Hyperlink](#)

d. Public Hearing on Ordinance 1164 – Stop Signs – May or may not vote to open a public hearing regarding stop signs at the corner of North 17th Avenue and Cherokee Land and Cherokee Circle. [Hyperlink](#)

e. Waive Two Readings – Ordinance 1164 – May or may not vote to approve waiving the two readings of Ordinance 1164.

f. Ordinance 1164 – Stop Signs – May or may not vote to approve waiving the three readings of Ordinance 1164. [Hyperlink](#)

CITY OF BROKEN BOW
CITY COUNCIL AGENDA
June 27th, 2017 @ 12:00 NOON
City Hall Council Chambers
314 South 10th Avenue, Broken Bow, NE

G. New Business:

- a. Open Bids for Baby Grand Piano** – Bids will be opened and may or may not vote to accept a bid for the baby grand piano.
- b. Airport Authority Report** – James Callaway and Doug Staab will present the annual airport authority report.
- c. Airport Interlocal** – May or may not vote to approve the interlocal agreement between the City of Broken Bow and the Broken Bow Airport Authority. [Hyperlink](#)
- d. Public Hearing – Ordinance 1165 - Premier Storage LLC Annexation** – May or may not vote to open a public hearing regarding Ordinance 1165, Premier Storage LLC annexation. [Hyperlink](#)
- e. First Reading of Ordinance 1165– Premier Storage LLC Annexation** – [Hyperlink](#)
- f. Public Hearing – Ordinance 1166 - Premier First Subdivision** – May or may not vote to open a public hearing regarding Ordinance 1166, Premier First Subdivision. [Hyperlink](#)
- g. First Reading of Ordinance 1166 - Premier First Subdivision** – [Hyperlink](#)
- h. Public Hearing – Ordinance 1167 - Opportunity Land Investments Annexation** – May or may not vote to open a public hearing regarding Ordinance 1167, Opportunity Land Investments annexation. [Hyperlink](#)
- i. First Reading of Ordinance 1167 – Opportunity Land Investments Annexation** – [Hyperlink](#)
- j. Resolution 2017-39 - Library Design Services** – May or may not vote to approve payment #10 to JEO Consulting Group Inc. in the amount of \$9,332.00 for work completed through June 2, 2017. [Hyperlink](#)
- k. Resolution 2017-40 – 2015 Downtown Improvements** – May or may not approve payment #28 to JEO Consulting Group Inc. in the amount of \$15,694.75 for work completed through June 9, 2017. [Hyperlink](#)
- l. Resolution 2017-41 – 2014 Downtown Improvements** – May or may not approve payment #14 to Myers Construction, Inc. in the amount of \$160,115.00 for work completed through June 17, 2017. [Hyperlink](#)
- m. Chamber of Commerce Travel/Relocation Expense** – May or may not approve payment to the Broken Bow Chamber in the amount of \$1,466.81 for the events director's travel/relocation expense from the hotel occupation tax funds. [Hyperlink](#)

CITY OF BROKEN BOW
CITY COUNCIL AGENDA
June 27th, 2017 @ 12:00 NOON
City Hall Council Chambers
314 South 10th Avenue, Broken Bow, NE

H. Comments by Mayor and Council Members Concerning City Departments.

I. Public Comment Period: The Mayor and Council will hear comments about any items not on the agenda. Every person speaking during the meeting shall come to the podium and state his or her name and postal address. The Mayor and Council will listen to comments but will not take action at this meeting. In order to assure appropriate communication, persons are asked to limit any comments to five minutes.

J. Closed Session – May or may not vote to enter into closed session for the purpose of potential litigation.

K. Adjournment

Upcoming Events

- ❖ **July 4th** – Independence Day - City Offices Closed
- ❖ **July 10th** – Board of Public Works Meeting at 12:30 p.m. @ Municipal Building
- ❖ **July 10th** – Park Board Meeting at 5:10 p.m. @ Municipal Building

The next City Council Meeting will be on July 11th, 2017 @ 12:00 pm.

The Council will review the above matters and take such action as they deem appropriate. The Council may enter into closed session to discuss any matter on this agenda when it is determined by the council that it is clearly necessary for protection of the public interest or the prevention of needless injury to the reputation of any individual and if such individual has not requested a public meeting, or as otherwise allowed by law. Any closed session shall be limited to the subject matter for which the closed session was called. If the motion to close passes, immediately prior to the closed session the Mayor shall restate on the record the limitation of the subject matter of the closed session.

Broken Bow City Council
Meeting Minutes
June 13th, 2017

The Broken Bow City Council met in regular session on Tuesday, June 13th, 2017. Notice of the meeting was given in advance thereof as required by law by publication in the Custer County Chief on May 29th, 2017. Availability of the agenda and related materials was communicated in the advanced notice to the Mayor and all members of the Council, as well as, shared with various media outlets. All proceedings hereafter shown were taken while the meeting was open to the attendance of the public.

Mayor Burt called the meeting to order at 12:02 P.M., with the following Councilmembers present: Sonnichsen, Neth, Myers, and Holcomb. Absent: None. Following the pledge of allegiance, Mayor Burt announced the availability of the open meetings law.

Moved by Sonnichsen, seconded by Myers, to approve the consent agenda for June 13th, 2017. Said motion includes approval of Minutes of the May 23rd Council Meeting, May 25th Special Meeting, May 30th Special Meeting, Bills to Date, and May Treasurer's Report. Roll call vote: Voting aye: Neth, Holcomb, Sonnichsen, and Myers. Nays: None. Motion carried.

ATCO, wasp spray, 393.50; Arrow Seed, gloves, 177.90; Black Hills Energy, utilities-gas, 553.52; Bob's Truck Repair, valve, 34.19; Bon Tool Co., release agent, 214.31; Broken Bow Airport Authority, interlocal, 1,083.33; Broken Bow Chamber of Commerce, ambulance incentive, 1,060.00; Broken Bow Municipal Utilities, fuel, 3,331.53, lift station, 15,619.04; Broken Bow Municipal Utilities, utilities, 5,056.40; Capital one Bank, misc, 259.93; Card Services, sprayer, 210.15; Cardmember Services, misc, 2,266.69; Carquest of Broken Bow, supplies, 48.26; Chris Myers, mileage, 188.85; City of Broken Bow – Health Insurance, insurance, 26,168.76; City of Broken Bow Pension Fund, pension, 6,503.04, 1,165.50; Comfort Inn, hotel, 443.60; Credit Management Services, collection fee, 229.46; Custer County Chief, publication, 348.75; Custer County Treasurer, interlocal, 10,387.49; Custer Public Power, CD cell power, 53.53; Dave Dunkel, boot, 74.66; EFTPS Online Payment, payroll, 2,183.32, 7,520.25, 9,335.82; Eakes Office Products, supplies, 340.52; Evans Feed Co., fish food, 36.27; Gateway Motors Inc., Handi-bus, 582.79; Geared 4 Sports, lifeguard whistles, 48.00; Global Equipment Company, drinking fountain, 969.23; Great Plains Communications, internet, 70.95; Grocery Kart, soda, 170.67; Hokanson Clan Helping Hands, cleaning service, 450.00; Holiday Inn, hotel, 189.90; Island Supply Welding Co., oxygen, 23.91; Kirkpatrick Cleaning Solutions, paper towels, 81.58; L & K Hats & T-Shirts, lifeguard pullovers, 195.00; League of Municipalities, Finance Conference, 886.00; Mead Lumber, supplies, 1,018.89; OSA/Computers Plus, office supplies, 430.30; Obrien's True Value, supplies, 546.85; Office Net, copies, 453.38; Paulsen Inc., rock, 432.16; Pavement Repair & Supplies, perma-patch, 2,150.00; Plains Equipment Group, mower blades, 161.66; Platte Valley Communications, repairs, 33.54; Prachts Ace Hardware, supplies, 635.88; Pristine Cleaning, LLC, cleaning, 375.00; Road Safe Traffic Systems, pavement marking, 7,123.11; Rod's Body & Paint, Inc., repairs, 1,500.13; S & L Sanitary Service, trash, 49.30; Schmicks Market, supplies, 93.78; Shawn Denney, fuel, 20.01; shirts, Signs, Mugs & More, signs, 43.90; Shopko Store, supplies, 333.72; State Income Tax WH NE Online Payment, payroll, 2,640.81; Steve Scott, postage, 45.66; Sublime Artistry, website hosting, 326.39; Taylor Heating & Cooling, ceiling tiles filter, 120.20; The Angela Foundation Inc., rent, 1,200.00; Trotter Service, repairs, 818.00; Universal Insurance, insurance, 36.00; V-Bar Sales & Service, supplies, 29.98; Van Diest Supply Co, mosquito spray, 3,649.25; Varney Health Mart, med supplies, 31.50; Verizon Wireless, cell phone, 157.57; Viaero Wireless, cell phone, 539.20; Village Uniform, rugs, 107.85; Wenquist Inc., clamps, 34.17; Bi-Weekly Payroll, payroll, 56,210.15; Total Bills = 180,304.94.

Moved by Neth, seconded by Myers, to approve the use of fireworks for the Correll wedding. Roll call vote: Voting aye: Myers, Holcomb, Neth, and Sonnichsen. Nays: None. Motion carried.

Moved by Myers, seconded by Neth, to approve blocking off parking spaces on the east side of the square for the Nebraska Army National Guard 43rd Army Band on Friday, July 14th, 2017 from 2:00 p.m. until the concert ends. Roll call vote: Voting aye: Holcomb, Sonnichsen, Neth, and Myers. Nays: None. Motion carried.

Moved by Sonnichsen, seconded by Holcomb, to open a public hearing at 12:06 p.m. on the liquor license application for an addition to the Cobblestone Hotel & Suites liquor license. Roll call vote: Voting aye: Myers, Holcomb, Sonnichsen, and Neth. Nays: None. Motion carried. Julie Hueftle from Cobblestone Hotel explained that they would like to hold some outdoor events. They will fence the area if the application is approved. Moved by Sonnichsen, seconded by Holcomb, to close the public hearing at 12:18 p.m. on the liquor license application for an addition to the Cobblestone Hotel & Suites liquor license. Roll call vote: Voting aye: Neth, Sonnichsen, Holcomb, and Myers. Nays: None. Motion carried.

Moved by Sonnichsen, seconded by Holcomb, to approve the liquor license addition for the Cobblestone Hotel & Suites liquor license with the stipulation for controlling the perimeter. Roll call vote: Voting aye: Neth, Holcomb, and Sonnichsen. Nays: None. Abstain: Myers. Motion carried.

Moved by Sonnichsen, seconded by Holcomb, to open a public hearing at 12:08 p.m. on the new liquor license application at Pleasure Lanes. Roll call vote: Voting aye: Myers, Holcomb, Sonnichsen, and Neth. Nays: None. Motion carried. This application is for the bowling alley to have a liquor license of their own. Previously Sylvesters had served alcohol to the bowling alley. Moved by Sonnichsen, seconded by Neth, to close the public hearing at 12:10 p.m. on the new liquor license application for Pleasure Lanes. Roll call vote: Voting aye: Neth, Sonnichsen, Holcomb, and Myers. Nays: None. Motion carried.

Moved by Holcomb, seconded by Myers, to approve the new liquor license application for Pleasure Lanes. Roll call vote: Voting aye: Holcomb, Sonnichsen, Myers, and Neth. Nays: None. Motion carried.

Moved by Sonnichsen, seconded by Neth, to approve JEO as the firm that will apply for the Source Water Protection grant. Roll call vote: Voting aye: Neth, Myers, Holcomb, and Sonnichsen. Nays: None. Motion carried.

Moved by Myers, seconded by Holcomb, to accept the final grant application for Source Water Protection grant funds. Roll call vote: Voting aye: Sonnichsen, Holcomb, Neth, and Myers. Nays: None. Motion carried.

No action was taken on the Natural Landscape Designation Guidelines. Polly Blackburn will bring the guidelines to the next meeting on June 27, 2017.

Bids were opened for the property located at 503 North C Street. There was one bid from Opportunity Land Investments for \$22,550. Moved by Sonnichsen, seconded by Holcomb, to table the bid acceptance of 503 North C Street until June 27th, 2017 for further review. Roll call vote: Voting aye: Myers, Sonnichsen, Neth, and Holcomb. Nays: None. Motion carried.

Bids were opened for underground irrigation at the three NIFA houses. There were two bids. One was from A to Z Lawn Pro for \$9,000.00 and one was from Instant Rain Lawn Irrigation for \$9,360.00. Moved by Sonnichsen, seconded by Neth, to table the bid for installation of underground irrigation at the three NIFA houses. Roll call vote: Voting aye: Neth, Holcomb, Myers, and Sonnichsen. Nays: None. Motion carried.

Bids were opened for the bricks from the 2015 Downtown Improvement Project. There was one bid from Gavin Historical Bricks in the amount of \$55,000.00. Moved by Sonnichsen, seconded by Neth, to accept the bid from Gavin Historical Bricks in the amount \$55,000.00 for the bricks from the 2015 Downtown Improvement Project. Roll call vote: Voting aye: Sonnichsen, Holcomb, and Neth. Nays: None. Abstain: Myers. Motion carried.

Moved by Myers, seconded by Sonnichsen, to approve the appointment of Darren Marten as the new Park Superintendent. Roll call vote: Voting aye: Holcomb, Sonnichsen, Neth, and Myers. Nays: None. Motion carried.

Moved by Neth, seconded by Holcomb, to approve the Memorandum of Understanding between the City and Broken Bow Chamber of Commerce regarding a Tourism Director. Roll call vote: Voting aye: Myers, Holcomb, Sonnichsen, and Neth. Nays: None. Motion carried.

Moved by Holcomb, seconded by Neth, to approve Change Order No. 8 to the 2015 Downtown Improvement Project. Roll call vote: Voting aye: Holcomb, Neth, and Sonnichsen. Nays: None. Abstain: Myers. Motion carried.

Moved by Holcomb, seconded by Sonnichsen, to approve Resolution 2017-34. Said resolution deems the baby grand piano as surplus property. Roll call vote: Voting aye: Neth, Sonnichsen, Holcomb, and Myers. Nays: None. Motion carried.

Moved by Sonnichsen, seconded by Holcomb, to approve Resolution 2017-35. Said resolution approves payment to Mid-State Engineering & Testing in the amount of \$2,773.00 for work completed on the Downtown Improvements Junk Fill Exploration. Roll call vote: Voting aye: Sonnichsen, Holcomb, and Neth. Nays: None. Abstain: Myers. Motion carried.

Moved by Myers, seconded by Sonnichsen, to approve Resolution 2017-36. Said resolution approves the amendment to the Employee Handbook. Roll call vote: Voting aye: Myers, Neth, Sonnichsen, and Holcomb. Nays: None. Motion carried.

Moved by Neth, seconded by Holcomb, to approve Resolution 2017-37. Said resolution approves payment #13 to Myers Construction in the amount of \$380,216.40 for work completed on the 2014 Downtown Improvements through May 21, 2017. Roll call vote: Voting aye: Holcomb, Neth, and Sonnichsen. Nays: None. Abstain: Myers. Motion carried.

Moved by Neth, seconded by Myers, to approve Resolution 2017-38. Said resolution approves payment #2 to Chief Construction Company in the amount of \$63,728.83 for work completed on the Broken Bow Library Renovation through May 31, 2017. Roll call vote: Voting aye: Sonnichsen, Holcomb, Myers, and Neth. Nays: None. Motion carried.

Moved by Sonnichsen, seconded by Holcomb, to open a public hearing at 1:37 p.m. on Ordinance 1164 regarding stop signs on North 17th Avenue at the intersection of Cherokee Lane and Cherokee Circle. Roll call vote: Voting aye: Myers, Neth, Sonnichsen, and Holcomb. Nays: None. Motion carried. It was explained that the stop signs will help residents coming out of Cherokee Circle to see the traffic coming. Emily Barnett, a resident of Cherokee Circle, spoke against the stops signs. Moved by Sonnichsen, seconded by Myers, to close a public hearing at 1:49 p.m. on Ordinance 1164 regarding stop signs on North 17th Avenue at the intersection of Cherokee Lane and Cherokee Circle. Roll call vote: Voting aye: Neth, Sonnichsen, Holcomb, and Myers. Nays: None. Motion carried.

Moved by Sonnichsen, seconded by Holcomb, to table Ordinance 1164, Stop Signs. Roll call vote: Voting aye: Myers, Neth, Sonnichsen, and Holcomb. Nays: None. Motion carried.

Mayor Burt opened the floor for comments from the Mayor and Councilmembers concerning City Departments. There were no comments.

Mayor Burt opened the public comment section of the meeting for those in attendance. There were no comments.

Moved by Sonnichsen, seconded by Myers, to adjourn the City Council Meeting at 1:43 p.m. Roll call vote: Voting aye: Sonnichsen, Myers, Holcomb, and Neth. Nays: None. Motion carried.

Cecil Burt, Mayor

ATTEST:

Stephanie M. Wright, City Clerk

Accounts Payable Detail Listing

City of Broken Bow

Vend#	Vendor Name	Pay#	Post Date	Due Date	Amount	Invoice	Date	PO#	Date	Status
	<u>Account#</u>			<u>Work Order</u>		<u>Description</u>			<u>Debit</u>	<u>Credit</u>
Adam Miller										
24536	6/27/2017	6/27/2017			200.00					Posted
	04-3414.00					22 rifle			200.00	0.00
Aflac										
24465	6/14/2017	6/14/2017			814.53					Posted
	01-1501.00					PRE TAX AFLAC			814.53	0.00
24466	6/14/2017	6/14/2017			146.75					Posted
	01-1501.00					AFLAC POST TAX			146.75	0.00
American Red Cross										
24523	6/27/2017	6/27/2017			1,076.00					Posted
	10-3359.00					lifeguard training			1,076.00	0.00
Black Hills Energy										
24494	6/27/2017	6/27/2017			282.99					Posted
	06-3220.00					Utilities-Gas			77.87	0.00
	04-3220.00					Utilities-Gas			33.70	0.00
	07-3220.00					Utilities-Gas			75.48	0.00
	02-3220.00					Utilities-Gas			95.94	0.00
									282.99	0.00
Blue Tarp Financial										
24498	6/27/2017	6/27/2017			39.99					Posted
	08-3310.00					membership renewal			39.99	0.00
Bonfire Grill										
24487	6/21/2017	6/21/2017			3,625.00					Ck# 989 Printed
	01-3212.00					NCMA Conference Expense			3,625.00	0.00
Brent Clark										
24486	6/21/2017	6/21/2017			111.69					Ck# 990 Printed
	01-3212.00					NCMA Conference Expense			111.69	0.00
Broken Bow Legends										
24485	6/21/2017	6/21/2017			845.16					Ck# 991 Printed
	01-3212.00					NCMA Conference			845.16	0.00
Cardmember Services										
24484	6/20/2017	6/20/2017			843.16					Ck# 987 Printed
	06-3313.00					NSVFA			40.00	0.00
	10-3410.00					Lifeguard umbrella			623.76	0.00
	10-3223.00					wristbands for pool			179.40	0.00
									843.16	0.00
Carquest of Broken Bow										
24513	6/27/2017	6/27/2017			7.58					Posted
	04-3310.00					washer fluid			7.58	0.00
Central Nebraska Sod Supply										
24533	6/27/2017	6/27/2017			184.00					Posted
	09-3339.00					sod for square			184.00	0.00
Century Link										
24482	6/20/2017	6/20/2017			681.22					Ck# 986 Printed
	08-3221.00					Street - Basic & Long Distance			32.47	0.00
	04-3221.00					Police - Basic & Long Distance			190.73	0.00
	10-3221.00					Swim Pool - Basic & Credit Card			128.60	0.00
	09-3221.00					Park - Basic & Long Distance			32.46	0.00
	03-3221.00					Handi Bus - Basic & Long Distance			54.04	0.00
	01-3221.00					General -Basic & Long Distance Radio			85.49	0.00
	01-3221.00					General -Basic & Long Distance Office			157.43	0.00
									681.22	0.00
Chemsearch										
24496	6/27/2017	6/27/2017			225.00					Posted
	08-3310.00					tar remover			225.00	0.00
City Flex Benefit Plan										
24467	6/14/2017	6/14/2017			130.21					Posted
	01-1501.00					SELECT FLEX-UNREIMBURSED M/D/V			130.21	0.00

Accounts Payable Detail Listing

City of Broken Bow

<u>Vend#</u>	<u>Vendor Name</u>	<u>Pay#</u>	<u>Post Date</u>	<u>Due Date</u>	<u>Amount</u>	<u>Invoice</u>	<u>Date</u>	<u>PO#</u>	<u>Date</u>	<u>Status</u>
	<u>Account#</u>					<u>Description</u>			<u>Debit</u>	<u>Credit</u>
City of Broken Bow - Health Insurance (continued)										
24477	6/14/2017	6/14/2017	3,380.23							Posted
	01-1501.00		HEALTH INSURANCE			3,380.23			0.00	
City of Broken Bow Pension Fund										
24468	6/14/2017	6/14/2017	2,196.94							Posted
	01-1513.00		RETIREMENT LOAN PAYMENT			2,196.94			0.00	
24469	6/14/2017	6/14/2017	6,780.08							Posted
	01-1502.00		RETIREMENT NEW			6,780.08			0.00	
Cobblestone Hotel & Suites										
24490	6/21/2017	6/21/2017	2,139.49							Ck# 992 Printed
	01-3212.00		NCMA Conference			2,139.49			0.00	
24491	6/21/2017	6/21/2017	166.00							Ck# 993 Printed
	01-3212.00		NCMA Conference			166.00			0.00	
Colonial Research Chem Corp										
24519	6/27/2017	6/27/2017	525.60							Posted
	10-3310.00		weed spray for pool			525.60			0.00	
Comfort Inn										
24481	6/19/2017	6/19/2017	300.00							Ck# 985 Printed
	06-3313.00		Fire school hotel rooms			300.00			0.00	
Computers Plus										
24512	6/27/2017	6/27/2017	933.28							Posted
	06-3410.00		TV and wireless desktop combo			466.64			0.00	
	05-3410.00		TV and wireless desktop combo			466.64			0.00	
						933.28			0.00	
Custer County Hiway Dept.										
24497	6/27/2017	6/27/2017	765.56							Posted
	08-3345.00		tack oil			765.56			0.00	
Demco										
24504	6/27/2017	6/27/2017	298.26							Posted
	07-3223.00		materials			298.26			0.00	
Deterding										
24517	6/27/2017	6/27/2017	6,350.21							Posted
	10-3432.00		acid			623.48			0.00	
	10-3410.00		chemical sensors, pump repairs			1,041.73			0.00	
	10-3310.00		chlorination room rebuild, valves, solenoids			4,685.00			0.00	
						6,350.21			0.00	
Dollar General-Regions 410526										
24515	6/27/2017	6/27/2017	29.95							Posted
	02-3223.01		soap and air freshners			29.95			0.00	
EFTPS Online Payment										
24473	6/14/2017	6/14/2017	2,417.50							Ck# 982 Printed
	01-1500.00		MEDICARE			2,417.50			0.00	
24474	6/14/2017	6/14/2017	8,649.17							Ck# 982 Printed
	01-1500.00		FEDERAL MARRIED			5,209.12			0.00	
	01-1500.00		FEDERAL SINGLE			3,440.05			0.00	
						8,649.17			0.00	
24475	6/14/2017	6/14/2017	10,336.54							Ck# 982 Printed
	01-1500.00		SOCIAL SECURITY			10,336.54			0.00	
Eakes Office Products										
24502	6/27/2017	6/27/2017	123.00							Posted
	07-3216.00		office supplies			123.00			0.00	
Family Heritage										
24470	6/14/2017	6/14/2017	56.00							Posted
	01-1501.00		FAMILY HERITAGE			56.00			0.00	
Gale/Cengage Learning										
24511	6/27/2017	6/27/2017	262.50							Posted
	07-3340.10		database renewal			262.50			0.00	
Gempler's										
24530	6/27/2017	6/27/2017	196.50							Posted
	08-3310.00		shoulder harness, sprayer			196.50			0.00	

Accounts Payable Detail Listing

City of Broken Bow

<u>Vend#</u>	<u>Vendor Name</u>	<u>Pay#</u>	<u>Post Date</u>	<u>Due Date</u>	<u>Amount</u>	<u>Invoice</u>	<u>Date</u>	<u>PO#</u>	<u>Date</u>	<u>Status</u>
	<u>Account#</u>			<u>Work Order</u>		<u>Description</u>			<u>Debit</u>	<u>Credit</u>
Great Plains Communications (continued)										
24503	6/27/2017	6/27/2017			600.00					Posted
	07-3221.00					telephone/internet			600.00	0.00
Holcomb Pharmacy										
24528	6/27/2017	6/27/2017			19.14					Posted
	05-3338.00					test strips			19.14	0.00
Holmes Plumbing & Heating										
24520	6/27/2017	6/27/2017			207.05					Posted
	10-3310.00					bathroom repairs			207.05	0.00
Hometown Leasing										
24516	6/27/2017	6/27/2017			200.17					Posted
	04-3216.00					Copier Lease			111.26	0.00
	07-3216.00					Copier Lease			88.91	0.00
									200.17	0.00
Ingram Library Services										
24506	6/27/2017	6/27/2017			1,547.54					Posted
	07-3340.00					materials			1,547.54	0.00
K. Joan Birnie										
24507	6/27/2017	6/27/2017			159.04					Posted
	07-3340.00					book reimbursement			159.04	0.00
Kirkpatrick Cleaning Solutions										
24526	6/27/2017	6/27/2017			147.84					Posted
	02-3223.01					paper towels, trash bags, toilet paper			147.84	0.00
L&K Hats & T-Shirts										
24514	6/27/2017	6/27/2017			166.75					Posted
	10-3223.00					lifeguard			166.75	0.00
Laurie French										
24521	6/27/2017	6/27/2017			214.00					Posted
	10-3359.00					mileage for two trips to Hastings			214.00	0.00
Mid State Engineering & Testing										
24524	6/27/2017	6/27/2017			670.00					Posted
	12-4200.05					downtown testing			670.00	0.00
NMC Exchange LLC										
24500	6/27/2017	6/27/2017			1,367.79					Posted
	08-3310.00					250 hr service #21			1,367.79	0.00
Nebraska Central Telephone Co.										
24531	6/27/2017	6/27/2017			2,594.69					Posted
	04-3221.00					new phones for department			2,594.69	0.00
1 Nebraska Child Support Payment Center										
24472	6/14/2017	6/14/2017			629.65					Ck# 984 Printed
	01-1503.00					CHILD SUPPORT-NE			629.65	0.00
Nebraska Law Enforcement Training Center										
24501	6/27/2017	6/27/2017			10.00					Posted
	04-3313.00					test for David Taylor			10.00	0.00
Nebraska Safety and Fire Equipment, Inc										
24532	6/27/2017	6/27/2017			52.00					Posted
	07-3311.00					annual fire extinguisher inspection			52.00	0.00
OSA/Computers Plus										
24489	6/21/2017	6/21/2017			53.98					Ck# 994 Printed
	01-3212.00					NCMA Conference Expense			53.98	0.00
Omaha State Bank										
24471	6/14/2017	6/14/2017			318.75					Posted
	01-1501.00					HSA			318.75	0.00
Omaha World Herald										
24510	6/27/2017	6/27/2017			155.74					Posted
	07-3340.00					subscription			155.74	0.00
Paulsen Inc.										
24499	6/27/2017	6/27/2017			3,780.78					Posted
	08-3425.00					concrete			3,780.78	0.00

Accounts Payable Detail Listing

City of Broken Bow

<u>Vend#</u>	<u>Vendor Name</u>	<u>Pay#</u>	<u>Post Date</u>	<u>Due Date</u>	<u>Amount</u>	<u>Invoice</u>	<u>Date</u>	<u>PO#</u>	<u>Date</u>	<u>Status</u>
	<u>Account#</u>			<u>Work Order</u>		<u>Description</u>			<u>Debit</u>	<u>Credit</u>
Penguin Random House (continued)										
24508	6/27/2017	6/27/2017			240.00					Posted
	07-3340.00					materials			240.00	0.00
Presto X Company										
24505	6/27/2017	6/27/2017			47.00					Posted
	07-3311.00					monthly service			47.00	0.00
Pristine Cleaning, LLC										
24527	6/27/2017	6/27/2017			375.00					Posted
	02-3419.01					Cleaning Service			375.00	0.00
Pro Printing										
24534	6/27/2017	6/27/2017			239.39					Posted
	01-3212.00					visitor maps			239.39	0.00
Shirts, Signs, Mugs & More										
24492	6/21/2017	6/21/2017			510.00					Ck# 995 Printed
	01-3212.00					NCMA Conference			510.00	0.00
Site One Landscape Supply										
24522	6/27/2017	6/27/2017			456.78					Posted
	09-3427.00					irrigation supplies for square			456.78	0.00
Sport Videos										
24509	6/27/2017	6/27/2017			346.00					Posted
	07-3340.00					materials			346.00	0.00
State Income Tax WH NE Online Payment										
24476	6/14/2017	6/14/2017			2,945.56					Ck# 983 Printed
	01-1500.00					STATE MARRIED			1,898.67	0.00
	01-1500.00					STATE SINGLE			1,046.89	0.00
									<u>2,945.56</u>	<u>0.00</u>
Stephanie Wright										
24525	6/27/2017	6/27/2017			208.65					Posted
	01-3205.00					mileage to finance conference			208.65	0.00
Sublime Artistry										
24535	6/27/2017	6/27/2017			87.00					Posted
	01-3222.00					website hosting			87.00	0.00
The Angela Foundation Inc.										
24493	6/27/2017	6/27/2017			600.00					Posted
	12-4200.01					July Library Rent			600.00	0.00
The Cookie Farm										
24488	6/21/2017	6/21/2017			60.00					Ck# 996 Printed
	01-3212.00					NCMA Conference Expense			60.00	0.00
Trotter Service										
24495	6/27/2017	6/27/2017			143.00					Posted
	08-3310.00					flat repair			143.00	0.00
US Bank Equipment Finance										
24483	6/20/2017	6/20/2017			303.97					Ck# 988 Printed
	01-3216.00					Copier Lease			303.97	0.00
Unitech										
24518	6/27/2017	6/27/2017			452.50					Posted
	09-3311.00					cleaning supplies			452.50	0.00
Verizon Wireless										
24529	6/27/2017	6/27/2017			60.04					Posted
	06-3221.00					tablet data			60.04	0.00

Accounts Payable Detail Listing

City of Broken Bow

Vend# Vendor Name

<u>Pay#</u>	<u>Post Date</u>	<u>Due Date</u>	<u>Amount</u>	<u>Invoice</u>	<u>Date</u>	<u>PO#</u>	<u>Date</u>	<u>Status</u>
	<u>Account#</u>	<u>Work Order</u>			<u>Description</u>		<u>Debit</u>	<u>Credit</u>

75,089.89 69 Non-voided payables listed.
Report Setup

AP - Accounts Payable Listing : Vendor Name

Filter Options

Starting: 6/14/2017

Ending: 6/27/2017

Banks: All

Payable Status: Posted, Printed, ACH, Recorded, Voided

All Vendors Selected

6/14/2017 Payroll \$59,088.68
5/31/2017 Payroll 56,210.15

Check Approval List - GL Account

6/22/2017 9:43:18 AM

City of Broken Bow

Page 1 of 2

<u>Vendor Name</u>	<u>Invoice</u>	<u>Invoice Description</u>	<u>Account Description</u>	<u>Amount</u>
General				
Aflac	PRE TAX AFLAC	Health/Life/Acc Insuranc	\$814.53	
Aflac	AFLAC POST TAX	Health/Life/Acc Insuranc	\$146.75	
Bonfire Grill	NCMA Conference Expense	City Promotions	\$3,625.00	
Brent Clark	NCMA Conference Expense	City Promotions	\$111.69	
Broken Bow Legends	NCMA Conference	City Promotions	\$845.16	
Century Link	telephone	Telephone/Internet	\$85.49	
Century Link	telephone	Telephone/Internet	\$157.43	
City Flex Benefit Plan	SELECT FLEX-UNREIMBURSED M/D/V	Health/Life/Acc Insuranc	\$130.21	
City of Broken Bow - Health Insurance	HEALTH INS	Health/Life/Acc Insuranc	\$3,380.23	
City of Broken Bow Pension Fund	RETIREMENT NEW	Pension	\$6,780.08	
City of Broken Bow Pension Fund	RETIREMENT LOAN PAYMENT	Loan Payment	\$2,196.94	
Cobblestone Hotel & Suites	NCMA Conference	City Promotions	\$2,139.49	
Cobblestone Hotel & Suites	NCMA Conference	City Promotions	\$166.00	
EFTPS Online Payment	MEDICARE	Payroll Taxes	\$2,417.50	
EFTPS Online Payment	FEDERAL	Payroll Taxes	\$5,209.12	
EFTPS Online Payment	FEDERAL	Payroll Taxes	\$3,440.05	
EFTPS Online Payment	FICA	Payroll Taxes	\$10,336.54	
Family Heritage	FAMILY HERITAGE	Health/Life/Acc Insuranc	\$56.00	
Nebraska Child Support Payment Center	CHILD SUPPORT-NE	Child Support	\$629.65	
OSA/Computers Plus	NCMA Conference Expense	City Promotions	\$53.98	
Omaha State Bank	HSA	Health/Life/Acc Insuranc	\$318.75	
Pro Printing	visitor maps	City Promotions	\$239.39	
Shirts, Signs, Mugs & More	NCMA Conference	City Promotions	\$510.00	
State Income Tax WH NE Online Paymen	STATE	Payroll Taxes	\$1,046.89	
State Income Tax WH NE Online Paymen	STATE	Payroll Taxes	\$1,898.67	
Stephanie Wright	mileage to finance conference	Travel & Meeting Expen	\$208.65	
Sublime Artistry	website hosting	Miscellaneous Expense	\$87.00	
The Cookie Farm	NCMA Conference Expense	City Promotions	\$60.00	
US Bank Equipment Finance	copier lease	Copier Maint/Expense	\$303.97	
		Total General	\$47,395.16	
Municipal Building				
Black Hills Energy	Gas	Utilities	\$95.94	
Dollar General-Regions 410526	soap and air freshners	Building Cleaning Suppli	\$29.95	
Kirkpatrick Cleaning Solutions	paper towels. trash bags, toilet paper	Building Cleaning Suppli	\$147.84	
Pristine Cleaning, LLC	cleaning service	Contracted Services	\$375.00	
		Total Municipal Building	\$648.73	
Handi Bus				
Century Link	telephone	Telephone/Internet	\$54.04	
		Total Handi Bus	\$54.04	
Police				
Adam Miller	22 rifle	Guns	\$200.00	
Black Hills Energy	Gas	Utilities	\$33.70	
Carquest of Broken Bow	washer fluid	Maint/Repair Equipment	\$7.58	
Century Link	telephone	Telephone/Internet	\$190.73	
Hometown Leasing	copier lease	Copier Maint/Expense	\$111.26	
Nebraska Central Telephone Co.	new phones for department	Telephone/Internet	\$2,594.69	
Nebraska Law Enforcement Training Cer	test for David Taylor	Training	\$10.00	
		Total Police	\$3,147.96	
Rescue Unit				
Computers Plus	TV and wireless desktop combo	Equipment Purchases	\$466.64	
Holcomb Pharmacy	test strips	Ambulance Supplies	\$19.14	
		Total Rescue Unit	\$485.78	
Fire				
Black Hills Energy	Gas	Utilities	\$77.87	
Cardmember Services		Training	\$40.00	
Comfort Inn	Fire school hotel rooms	Training	\$300.00	
Computers Plus	TV and wireless desktop combo	Equipment Purchases	\$466.64	
Verizon Wireless	tablet data	Telephone/Internet	\$60.04	
		Total Fire	\$944.55	
Library				

Check Approval List - GL Account

6/22/2017 9:43:18 AM

City of Broken Bow

Page 2 of 2

<u>Vendor Name</u>	<u>Invoice</u>	<u>Invoice Description</u>	<u>Account Description</u>	<u>Amount</u>
Library				
Black Hills Energy		Gas	Utilities	\$75.48
Demco		materials	Supplies & Postage	\$298.26
Eakes Office Products		office supplies	Copier Maint/Expense	\$123.00
Gale/Cengage Learning		database renewal	Database	\$262.50
Great Plains Communications		telephone/internet	Telephone/Internet	\$600.00
Hometown Leasing		copier lease	Copier Maint/Expense	\$88.91
Ingram Library Services		materials	Book Purchases	\$1,547.54
K. Joan Birnie		book reimbursement	Book Purchases	\$159.04
Nebraska Safety and Fire Equipment, Inc		annual fire extinguisher inspection	Maintenance & Repair B	\$52.00
Omaha World Herald		subscription	Book Purchases	\$155.74
Penguin Random House		materials	Book Purchases	\$240.00
Presto X Company		monthly service	Maintenance & Repair B	\$47.00
Sport Videos		materials	Book Purchases	\$346.00
			Total Library	\$3,995.47
Street				
Blue Tarp Financial		membership renewal	Maint/Repair Equipment	\$39.99
Century Link		telephone	Telephone/Internet	\$32.47
Chemsearch		tar remover	Maint/Repair Equipment	\$225.00
Custer County Hiway Dept.		tack oil	Road Materials	\$765.56
Gempler's		shoulder harness, sprayer	Maint/Repair Equipment	\$196.50
NMC Exchange LLC		250 hr service #21	Maint/Repair Equipment	\$1,367.79
Paulsen Inc.		concrete	Street Construction	\$3,780.78
Trotter Service		flat repair	Maint/Repair Equipment	\$143.00
			Total Street	\$6,551.09
Park				
Central Nebraska Sod Supply		sod for square	Maintenance/Repair Gro	\$184.00
Century Link		telephone	Telephone/Internet	\$32.46
Site One Landscape Supply		irrigation supplies for square	Underground Sprinklers	\$456.78
Unitech		cleaning supplies	Maintenance & Repair B	\$452.50
			Total Park	\$1,125.74
Swimming Pool				
American Red Cross		lifeguard training	Red Cross Training	\$1,076.00
Cardmember Services			Supplies & Postage	\$179.40
Cardmember Services			Equipment Purchases	\$623.76
Century Link		telephone	Telephone/Internet	\$128.60
Colonial Research Chem Corp		weed spray for pool	Maint/Repair Equipment	\$525.60
Deterding		acid, pump repairs, chlorination room rebuild	Maint/Repair Equipment	\$4,685.00
Deterding		acid, pump repairs, chlorination room rebuild	Equipment Purchases	\$1,041.73
Deterding		acid, pump repairs, chlorination room rebuild	Pool Chemicals	\$623.48
Holmes Plumbing & Heating		bathroom repairs	Maint/Repair Equipment	\$207.05
L & K Hats & T-Shirts		lifeguard	Supplies & Postage	\$166.75
Laurie French		mileage for two trips to Hastings	Red Cross Training	\$214.00
			Total Swimming Pool	\$9,471.37
ST Infra/Capital				
Mid State Engineering & Testing		downtown testing	Downtown Improvement	\$670.00
The Angela Foundation Inc.		July Library Rent	Library	\$600.00
			Total ST Infra/Capital	\$1,270.00
				\$75,089.89

Report Selection: Check Approval List - GL Account
 Date Range Selection: GL Posting Date
 Starting Date: 6/14/2017
 Ending Date: 6/27/2017

6/14/2017 Payroll 59,088.68
 5/31/2017 Payroll 56,210.15

Mayor Wages

<u>Location</u>	<u>Population</u>	<u>Yearly Pay</u>
Crete	7135	\$15,000.00
Wayne	5660	\$8,000.00
Gretna	4905	\$10,200.00
Wahoo	4508	\$4,000.00
Aurora	4479	\$1,200.00
Falls City	4325	\$3,600.00
cozad	3997	\$6,000.00
Fairbury	3942	\$3,600.00
Gothenburg	3574	\$7,200.00
Auburn	3460	\$3,600.00
West Point	3364	\$4,000.00
Central City	2934	\$4,000.00
David City	2915	\$3,600.00
Kimball	2496	\$2,400.00
St. Paul	2299	\$2,400.00
Tekamah	1853	\$3,000.00
Hickman	1657	\$3,000.00
Neligh	1621	\$3,000.00
Gordon	1612	\$360.00
Plainview	1246	\$3,000.00
Arlington	1242	\$2,400.00
Burwell	1210	\$1,800.00
North Bend	1177	\$3,500.00
Stromsburg	1170	\$3,000.00
Grant	1165	\$2,500.00
Franklin	1000	\$2,400.00
Crawford	997	\$1,200.00
Laurel	964	\$2,000.00
Lyons	851	\$5,100.00
Elgin	661	\$1,800.00
Dodge	612	\$2,400.00
Nelson	488	\$2,500.00

Average	\$3,805.00
Median	\$3,000.00
Midpoint	\$3,402.50
Broken Bow	\$3,350.00
% Change (Midpoint - Local)/Local	1.57%

Survey -- Mayor & Council Salaries -- 2016

City	Population	Mayor	Council	Comments					
Crete	7135	\$15,000.00	\$4,000.00						
Wayne	5660	\$8,000.00	\$4,500.00						
Gretna	4905	\$10,200.00	\$6,400.00						
Wahoo	4508	\$4,000.00	\$2,000.00						
Aurora	4479	\$1,200.00	\$600.00						
Falls City	4325	\$3,600.00	\$2,400.00						
Cozad	3997	\$6,000.00	\$2,400.00						
Fairbury	3942	\$3,600.00	\$2,400.00						
Gothenburg	3574	\$7,200.00	\$2,400.00						
Broken Bow	3503	\$3,350.00	\$2,100.00						
Auburn	3460	\$3,600.00	\$2,400.00						
West Point	3364	\$4,000.00	\$2,400.00						
Central City	2934	\$4,000.00	\$3,000.00						
David City	2915	\$3,600.00	\$2,700.00	meet once a month/: Mayor \$300/reg \$150/spcl - Council \$225/reg \$112.50/spcl					
Kimball	2496	\$2,400.00	\$1,200.00						
St. Paul	2299	\$2,400.00	\$1,600.00						
Tekamah	1853	\$3,000.00	\$1,500.00						
Hickman	1657	\$3,000.00	\$1,800.00	Annual salaries plus \$100.00 per meeting attended (Mayor & Council)					
Neligh	1621	\$3,000.00	\$1,500.00	spcl mtg Council receive \$25/mtg., Mayor does not					
Gordon	1612	\$360.00	\$300.00	spcl mtgs. they each receive an additional \$15.00/mtg.					
Plainview	1246	\$3,000.00	\$2,000.00						
Burwell	1210	\$1,800.00	\$1,000.00						
North Bend	1177	\$3,500.00	\$2,500.00	There are two meetings a month					
Stromsburg	1170	\$3,000.00	\$1,800.00	It is paid monthly (\$250/\$150)					
Grant	1165	\$2,500.00	\$1,500.00						
Franklin	1000	\$2,400.00	\$1,200.00						
Crawford	997	\$1,200.00	\$600.00	Paid annually					
Laurel	964	\$2,000.00	\$1,000.00						
Lyons	851	\$5,100.00	\$2,700.00						
Nelson	488	\$2,500.00	\$1,750.00						

I have broken the proposed changes to ordinance 2015-5 into 3 parts.

Part 1 of 3.

Native Wildflower and Pollinator habitat Gardens/Landscapes Exemption.

Part 2 of 3.

This changes the way the enforcement procedure is carried out, , and changing the atmosphere to that of a dispute resolution and “how can we help” attitude, rather than immediate citation.

Part 3 of 3.

This makes changes to the actual ordinance, and adds some definitions.

Explanation to addendums.

After hearing your concerns and comments at the last council meeting I wanted to come up with a plan that met those concerns. After researching the issue and speaking with some of you about potential issues involved I have modified some of the earlier requests and eliminated others.

The concerns from the last meeting were that there should be a way of knowing if someone really has

Planted a pollinator garden or if their just trying to get out of mowing their yard. The first addendum that creates the exemption for a native wildflower garden satisfies that concern by requiring proof of

Seed purchase or of documented species. To some degree having a sign up will satisfy the other concern about people who may have concerns about the appearance of the yard, esp. during the early Establishment phase.

The concern about how to deal with neighbors unhappy with each others yards has been addressed in Addendum 2, also addendum 2 does a great deal to improve the relationship between law enforcement

And citizens, reducing the negative interactions, and placing some of the responsibility on individuals

For approaching their neighbors, - a very libertarian approach, which also happens to be a way that

Could work very well in this community, as opposed to larger areas where people don't know their Neighbors.

In Addendum 3 , I clarified the height on landscaping plants and grasses, which don't meet the requirements for a native wildflower garden, but also aren't in compliance with an 8 inch height

Restriction. Also including a definition of what "worthless vegetation" is, both of the 3rd addendum

Parts were taken verbatim from the Lincoln city ordinance.

Other things to consider, that while we strongly would prefer a designated person with knowledge in wildflower seeds and vegetation, and someone who knows the difference between say grass and weeds,

We also understand the difficulties that this may cause. So the addendum has been written to be flexible enough to provide for either a special designee, or someone already in enforcement to be the

Designee, similar to a "school officer" or the DARE program officer.

Things not added to the neighbor disputes, complaints would be chemical drift into a natural landscape by a neighbor using excessive herbicide, pesticides or biocides, or a neighbor who has degraded his

Landscape by having only bare patches of dirt- this would be a violation of Lincolns ordinance., and is worth thinking about for future policy.

Addendum 1

Native Wildflower and Pollinator Habitat Gardens Exemption:

To qualify for a native wildflower and pollinator habitat garden/landscape exemption the following

Criteria must be met:

1. The area must have at least 15 wildflowers, shrubs or other native pollinator plants, trees, Or native grasses.
2. The landscape must provide flower in early, mid and late season and preferably winter cover For pollinator habitat.
3. Proof of seed purchase (receipt), or if no receipt, documentation of at least 15 species located At the area .
4. Completion of an application- along with documentation to be filed with the city.
5. A sign will be displayed during the establishment period of the wildflower or landscape areas To let people know that a native wildflower /pollinator habitat garden is in progress. Once the Area is well established the sign will no longer be necessary.

Addendum 2

How will ordinance 2015-5 be carried out?

1. Police will not issue citations unless they have received a complaint by at least 2 adjoining Neighbors, and a designated person has already been involved in a dispute-resolution attempt.
 - a) The person in question has the right to know who has issued a complaint against them.
This is also necessary to verify that a good faith attempt was made by neighbors.
2. The neighbors of the owner in question must first make a good faith effort to speak with the Owner and attempt to resolve the matter without involving any city officials.
3. If owners are unable to resolve the matter after good faith attempt, they will notify a designated Person ,who will then intervene in an assistive "complaint-resolution" manner. The designated Person will be determined by the city.
4. If the designated person is unable to dismiss or resolve the matter, and its determined that The situation will not be resolved without enforcement intervention, a citation will then be Issued.

Addendum 3 of 3

1.

Height Limitations for landscape plantings within sidewalk space.

Shrubs, perennial and annual flowering plants, ornamental grasses, and ground covers planted within the sidewalk space, or abutting a sidewalk shall be maintained so that they do not extend over the curbs, sidewalks or driveways. Height may be up to 30 inches.

2. Worthless Vegetation shall be defined as : uncontrolled or uncultivated growth of weeds, brush, vines

Grasses or other vegetation which contributes to noxious pollens in the atmosphere, or unreasonable

Interference with the use of and enjoyment of abutting public or private property, and a safety and health hazard.

Opportunity Land Investments LLC

Christopher Myers

720 Pawnee Lane

Broken Bow, NE 68822

308-870-3504

opportunitylandinvestments@gmail.com

You are collecting sealed bids on the following property:

503 North C Street with the legal description of Groats Addition: Block 84 S1/2 Lot 3
And All Lots 4-5, Broken Bow City.

Please accept our bid of **\$22,550.00**

Contact information:

Chris Myers

Cell phone 308-870-3504

Susan Porter

Cell phone 308-870-0638

Instant Rain Lawn Irrigation
44123 HWY 70
Broken Bow, NE 68822

Estimate

Date 6/4/2017
Estimate # 17

Name / Address

City of Broken Bow
314 South 10 th St
Broken Bow Ne. 68822

P.O. #

Terms

Due Date 6/4/2017
Other

Description	Qty	Rate	Total
Material and labor for sprinklers (six zones of sprinklers and one drip zone)	3	2,175.00	6,525.00
Material and labor for seeding	3	500.00	1,500.00
Mulch and labor	3	445.00	1,335.00

The total price for EACH house is \$3120.00

Subtotal	\$9,360.00
Sales Tax (0.0%)	\$0.00
Total	\$9,360.00

Instant Rain Lawn Irrigation

308-870-3421



POB 374
 BROKEN BOW, NE 68822

ESTIMATE

Date	Invoice #
6/15/2017	59733

Bill To
CITY OF BROKEN BOW POB 504 BB, NE 68822

Description	Qty	Rate	Amount
Bids for underground irrigation:			
706 Pawnee Lane	1	3,000.00	3,000.00
731 Pawnee Lane	1	3,000.00	3,000.00
744 Pawnee Lane	1	3,000.00	3,000.00
Bids for seeding lawns:			
706 Pawnee Lane	1	600.00	600.00
731 Pawnee Lane	1	600.00	600.00
744 Pawnee Lane	1	600.00	600.00
A TO Z LAWN PRO APPRECIATES YOUR BUSINESS!		Total	\$10,800.00

**CITY OF BROKEN BOW, NEBRASKA
ORDINANCE NO. 1164**

**AN ORDINANCE PROVIDING FOR THE PLACEMENT OF A STOP SIGN ON
THE CORNERS OF NORTH 17TH AVENUE AND CHEROKEE LANE AND
NORTH 17TH AVENUE AND CHEROKEE CIRCLE FOR EAST AND WEST
BOUND TRAFFIC.**

**BE IT ORDAINED BY THE MAYOR AND COUNCIL OF THE CITY OF
BROKEN BOW, NEBRASKA:**

Section 1. That “Stop” signs be placed on the corner of North 17th Avenue and Cherokee Lane for east and west bound traffic.

Section 2. That “Stop” signs be placed on the corner of North 17th Avenue and Cherokee Circle for east and west bound traffic.

Section 3. This ordinance shall be in full force and take effect from and after its passage, approval and publication according to law.

Passed and approved this 27th day of June, 2017.

Cecil Burt, Mayor

ATTEST:

Stephanie M. Wright, City Clerk

INTERLOCAL COOPERATION AGREEMENT

This Agreement is entered into Between the County of Custer, Nebraska, and the City of Broken Bow, Nebraska, pursuant to the Interlocal Cooperation Act of the State of Nebraska.

Whereas, the City of Broken Bow now owns and operates the Broken Bow Airport Authority through the Broken Bow Airport Authority Board, and;

Whereas, the citizens of the City of Broken Bow and the citizens of the County of Custer, receive substantial benefits from the use of the Broken Bow Airport; and

Whereas, the City of Broken Bow and the County of Custer wish to enter into this agreement to provide joint funding for the Broken Bow Airport Authority.

NOW THEREFORE, in consideration of the mutual covenants and agreements contained herein, it is hereby agreed as follows:

1. The purpose of this agreement is to provide joint funding of the Broken Bow Airport Authority to enable the parties to deliver necessary governmental services to its citizens and taxpayers at the lowest possible costs.
2. This agreement shall become effective upon the approval by each governing body authorizing the Mayor and Chairman to sign the agreement on behalf of the governing body. The agreement shall continue for one budget year, which shall be the 2017-2018 budget year.
3. This agreement does not create a separate legal entity.
4. This agreement does not require the sharing of any equipment.
5. Under this agreement, the Broken Bow. Airport Authority shall continue to run the Broken Bow Airport as it has done in the past.

6. The City of Broken Bow and the County of Custer each agree to provide one half (1/2) the total tax requirement of the Authority for the 2017-2018 budget year. The Airport Authority tax requirement for their Budget for FY17-18 will be \$26,000.00; therefore Custer County's share will be \$13,000.00 and the City of Broken Bow, \$13,000.00. All payments shall be made monthly and shall be paid directly to the Treasurer of the Broken Bow Airport Authority.
7. All property acquired during the 2017-2018 budget year by the Broken Bow Airport Authority shall remain the property of said Authority.
8. This agreement does not extend the liability of either entity. The Authority shall continue to carry liability insurance to cover the Airport operations.

This agreement shall not be modified except by resolution of each entity involved.

ATTEST:

THE COUNTY OF CUSTER

CLERK

CHAIRMAN, COUNTY BOARD

ATTEST:

CITY OF BROKEN BOW

CLERK

MAYOR, CITY OF BROKEN BOW

CITY OF BROKEN BOW, NEBRASKA

ORDINANCE NO. 1165

An ordinance to annex territory, including lands, lots, tracts, streets and highways within said description, as follows, to-wit:

Tract
see attached legal description.

WHEREAS, said land is urban or suburban in character and is contiguous and adjacent to the city limits of the City of Broken Bow, Nebraska; and

WHEREAS, said territory and the owners and inhabitants thereof will receive material benefits and advantages from the annexation of said territory to said City and justice and equity requires the annexation of said territory to said City; and

WHEREAS, the council members of the City of Broken Bow, Nebraska have voted upon the question of annexing said territory to said City and a majority of all the members of the City Council have voted for said annexation.

NOW, THEREFORE, BE IT ORDAINED BY THE MAYOR AND CITY COUNCIL OF THE CITY OF BROKEN BOW, NEBRASKA:

Section 1. That the territory described as follows, to-wit:

Tract
see attached legal description

be, and the same hereby is, annexed to the corporate limits of the City of Broken Bow, Nebraska, and the limits of said City shall be, and the same hereby are, extended to include with the boundaries and territory of said City said territory.

Section 2. That said territory and the inhabitants thereof shall hereafter enjoy the privileges and benefits of other persons and territory included within the City of Broken Bow, Nebraska, and said territory and inhabitants thereof shall hereafter be subject to the ordinances, rules, regulations,

taxes, and all other burdens of other persons and territory included within the City of Broken Bow, Nebraska; provided, that said territory shall not be taxed for any indebtedness of the City of Broken Bow, Nebraska existing prior to the date of this annexation.

Passed and approved this _____ day of _____, 2017.

Cecil Burt, Mayor

Attest:

Stephanie Wright, City Clerk

VOLUNTARY ANNEXATION PETITION:

NAME OF APPLICANT: Premier Storage LLC
CUSTER COUNTY

Date of Application: _____

TO THE HONORABLE MAYOR AND MEMBERS OF THE CITY COUNCIL OF THE CITY OF
BROKEN BOW.

1. We the undersigned owners of real property respectfully request that the area described
be annexed to the City of Broken Bow.

2. Is this area contiguous or noncontiguous to the City of Broken Bow?
____ Contiguous ____ Noncontiguous

3. The boundaries of such territory are as follows: _____ SEE ATTACHED Legal
description _____

METES & BOUNDS LEGAL DESCRIPTION

That accurately corresponds with submitted mylar annexation plat

Name Address

Signature required
Premier Storage by Christopher Meyer

Signature required

Print or type

Signature required

Signature required

Print or type

Print or type

VOLUNTARY ANNEXATION CHECKLIST

APPLICANT: _____

GENERAL DESCRIPTION: _____

____ Contiguous ____ Satellite

Does the property meet all statutory standards?

Y / N / NA

Will the property use both city water and sewer?

Y / N / NA

Has the Petitioner secured the support of the Board of Commissioners?

Y / N / NA

Has the Petitioner made arrangements for the costs of any utility extensions with the utilities department?

Y / N / NA

Is the property accessible directly from a major transportation route or existing city streets?

Y / N / NA

Is the property readily identifiable to emergency services (a factory, subdivision, a shopping center, etc.)?
Y / N / NA

Can the annexation area be served without creating unusual burdens on city services (heavy traffic, higher than typical solid waste, fire, police, street maintenance or utility costs)?
Y / N / NA

Is the use of the property consistent with the City's development plan and ordinances?
Y / N / NA

Has the property owner agreed to provide any easements, deeds, right-of-way, improvements, or other agreements required by City plans, policies or ordinances?
Y / N / NA

CITY ADMINISTRATOR'S RECOMMENDATION

_____ Annex effective _____
_____ Do not annex, but permit access to water and/or sewer.
_____ Do not annex and do not permit access to water and/or sewer.

ADDITIONAL EXPLANATION:

-

DATE: _____

Brent Clark
CITY ADMINISTRATOR

COUNCIL ACTION

_____ Annexed by Ordinance approved _____ effective _____
_____ Not annexed, but permitted access to water and/or sewer by resolution on _____
_____ Not annexed and denied access to water and/or sewer by resolution on _____

DATE CITY CLERK
pc: Department Heads

ORDINANCE ADOPTED AND APPROVED?

ORDINANCE FILED AT REGISTER OF DEEDS?

4/25/2017

Custer County Assessor

powered by:



Parcel Information	
Parcel ID	000509000
Links	Photo #1 Photo #2 Sketch #1
Map Number	2445-32-3-00000-000-0010
Cadastral #	
Current Owner	PREMIER STORAGE LLC
Mailing Address	720 PAWNEE LN, BROKEN BOW NE 68822-
Situs Address	
Tax District	98
Tax ID	
School District	BROKEN BOW SCHOOL 25
Neighborhood	1
Property Class	Commercial
Lot Width x Depth	
Legal Description	SEC 32-17-20 PAR IN NWSW 5.70 ACRES BROKEN BOW TWP~
Comments	SPLIT TO PARCEL # 000509050 ON 01/29/2008

Assessed Values				
<u>Year</u>	<u>Total</u>	<u>Land</u>	<u>Improvements</u>	<u>Outbuildings</u>
2016	\$138,200	\$53,500	\$84,700	\$0

2016 Tax Information	
Taxes	\$1,812.66
Tax Levy	1.401185

2016 Tax Levy	
<u>Description</u>	<u>Rate</u>
AG SOCIETY	0.004188
BBOW TWP 11 CEMETERY	0.012165
BROKEN BOW RURAL FIRE 1	0.012800
BROKEN BOW SCH 2012 BOND	0.049645
BROKEN BOW SCHOOL	0.999117
BROKEN BOW TOWNSHIP 11	0.025605
CUSTER COUNTY	0.176007
ESU #10	0.012743
LOWER LOUP NRD	0.031512
MID-PLAINS COLLEGE	0.077403

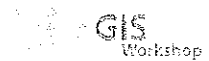
5 Year Sales History				
<u>Date</u>	<u>Book/Page</u>	<u># Parcels</u>	<u>Grantor</u>	<u>Price</u>
2015/11/25	15-6906	1	OPPORTUNITY LAND~INVESTMENTS LLC	\$0.00
2015/01/20	15-363	1	RELIABLE EARTH~CONSTRUCTION, LLC	\$60,000.00

Property Classification	
Status:	Improved
Location:	Rural

4/25/2017

Custer County Assessor

powered by:



Property Class:	Commercial	City Size:	2,501-5,000
Zoning:	COMMERCIAL	Lot Size:	2.00-4.99 ac.

Historical Valuation Information

<u>Year</u>	<u>Billed Owner</u>	<u>Land</u>	<u>Impr</u>	<u>Outbldg</u>	<u>Total</u>	<u>Taxable</u>	<u>Taxes</u>
2016	PREMIER STORAGE LLC	\$53,500	\$84,700	\$0	\$138,200	\$138,200	\$1,812.66
2015	OPPORTUNITY LAND INVESTMENTS LLC	\$28,500	\$0	\$0	\$28,500	\$28,500	\$397.54
2014	RELIABLE EARTH CONSTRUCTION, LLC	\$28,500	\$0	\$0	\$28,500	\$28,500	\$415.32
2013	MYERS, WILLIAM L ETAL	\$27,531	\$0	\$0	\$27,531	\$27,531	\$426.44
2012	RELIABLE EARTH CONSTRUCTION, LLC	\$18,839	\$0	\$0	\$18,839	\$18,839	\$292.96

Farm Residence Datasheet

<u>Type</u>		<u>Heat Type</u>	
<u>Quality / Condition</u>		<u>Foundation</u>	
<u>Arch. Type</u>		<u>Slab Area</u>	
<u>Year Built</u>		<u>Crawl Area</u>	
<u>Actual Age</u>	N/A	<u>Basement Area</u>	sq. ft.
<u>Ext. Wall 1</u>		<u>Min Finish</u>	
<u>Ext. Wall 2</u>		<u>Rec Finish</u>	
<u>Base Area</u>		<u>Part Finish</u>	
<u>Total Area</u>		<u>Bedrooms</u>	
<u>Style 1</u>		<u>Bathrooms</u>	
<u>Style 2</u>		<u>Garage Type</u>	
<u>Roof Type</u>		<u>Garage Area</u>	

Commercial Building Datasheet

<u>Bldg.</u>	<u>Sec.</u>	<u>Code</u>	<u>Description</u>	<u>Year</u>	<u>Cls.</u>	<u>Qual.</u>	<u>Area</u>	<u>Perm.</u>	<u>Stor.</u>	<u>Hght.</u>
1	1	471	LT. COMMERCIAL~UTILITY B	2015	D	100	7000	380	1	18

Refinements

<u>Description</u>	<u>Year</u>	<u>Units</u>
PAVING, CONCRETE	0	1400

Agland Inventory

<u>Soil Symbol</u>	<u>Soil Name</u>	<u>Land Use</u>	<u>LVG Code</u>	<u>Spot LVG</u>	<u>Value/Acre</u>	<u>Acres</u>	<u>Total Value</u>
--------------------	------------------	-----------------	-----------------	-----------------	-------------------	--------------	--------------------

4/25/2017

Custer County Assessor

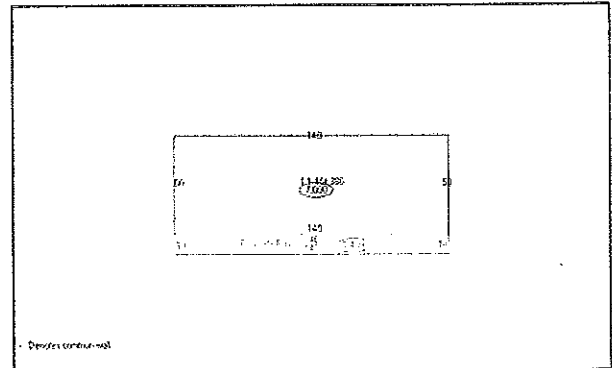
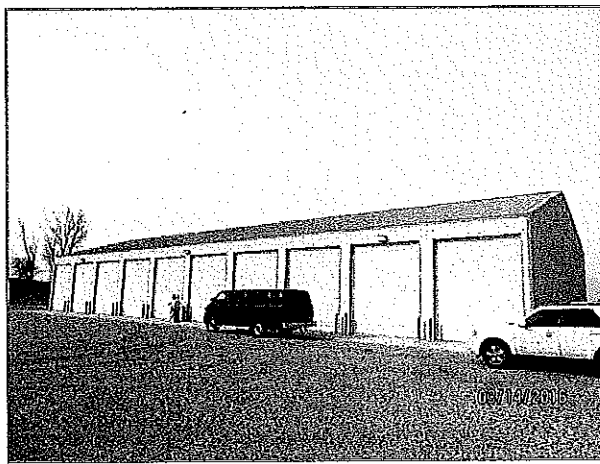
powered by:  GIS Workshop

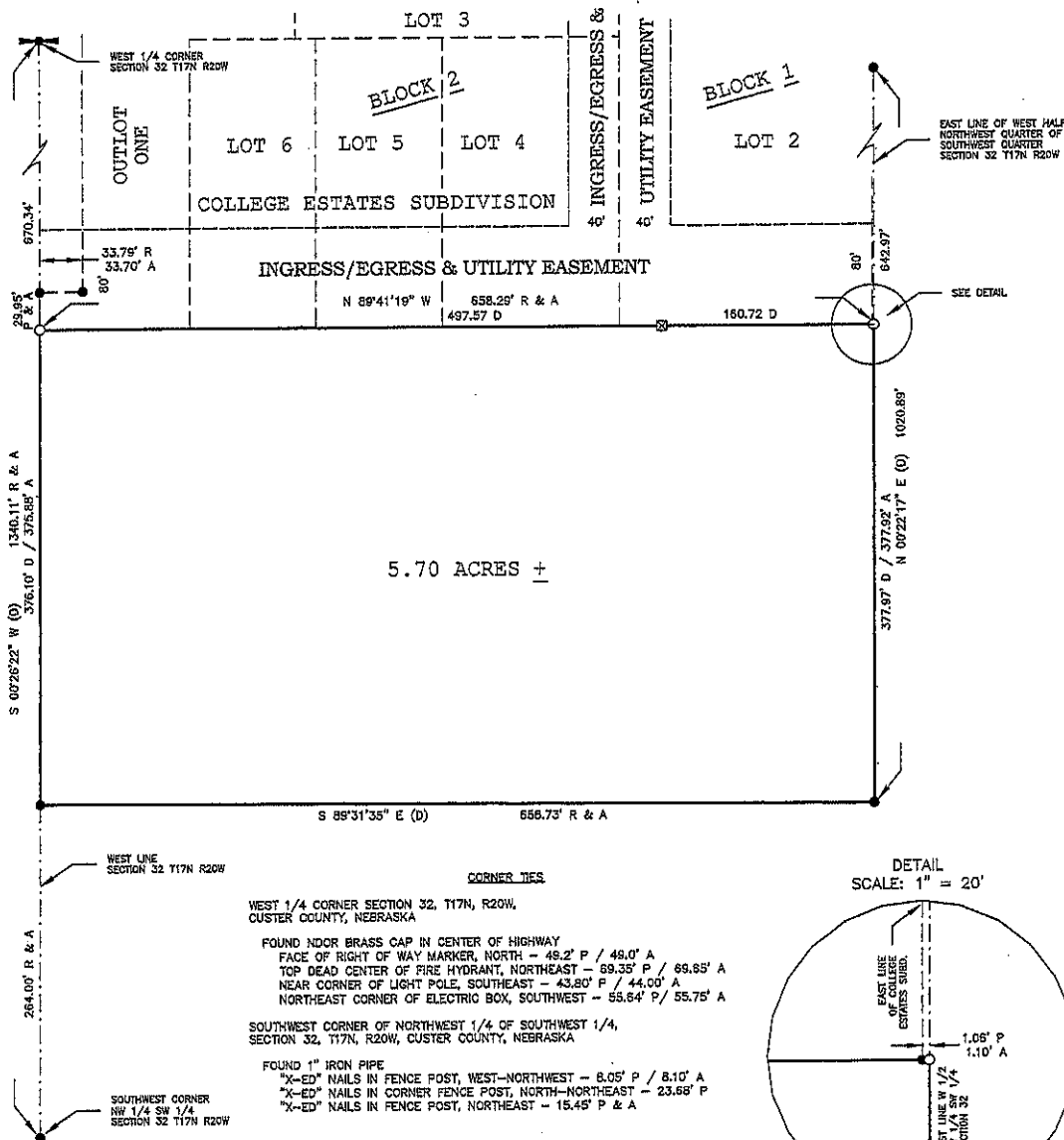
CB UN	BB COM UNIM	SITE	CB UN	5,000	4.7	23,500
S COMB	SUBURBAN COM B B	SITE	S COMB	30,000	1	30,000
Totals					5.7	53,500

Building Permits

<u>Permit #</u>	<u>Date</u>	<u>Description</u>	<u>Amount</u>
12	12/04/2015	STORAGE UNITS 50'X 140'X 25'	100000

Photo/Sketch





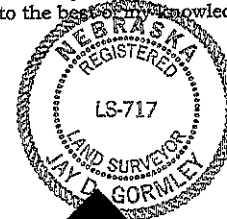
LEGAL DESCRIPTION OF RECORD

A tract of land located in the Northwest Quarter of the Southwest Quarter (NW1/4 SW1/4) of Section Thirty-two (32), Township Seventeen (17) North, Range Twenty (20) West of the 6th P.M., Custer County, Nebraska, described as follows: Commencing at the Northeast Corner of the West Half of the Northwest Quarter of the Southwest Quarter (W1/2 NW1/4 SW1/4) of Section Thirty-two (32), Township Seventeen (17) North, Range Twenty (20) West of the 6th P.M., Custer County, Nebraska; then N 89°41'19" W on the half section line, 161.45 feet to a point; thence S 00°18'40" W, 57.00 feet to the Northwest Corner of a tract described in Book 09, Page 2553 of the Records of the Register of Deeds of Custer County, Nebraska, point is also on Highway 2 R.O.W.; thence S 00°18'40" W, 176.00 feet on the West line of said tract described in Book 09, Page 2553 of the Records of the Register of Deeds of Custer County, Nebraska; thence S 00°18'40" W, 467.00 feet to the actual point of beginning; thence N 89°41'19" W, 497.57 feet to a point on the West line of said W1/2 NW1/4 SW1/4; thence S 00°26'22" W, 376.10 feet on the West line of said W1/2 NW1/4 SW1/4; thence S 89°31'35" E, 658.73 feet to a point on the East line of said W1/2 NW1/4 SW1/4; thence N 00°22'17" E, on said East line, 377.97 feet; thence N 89°41'19" W, 160.72 feet to the point of beginning.

SURVEYOR'S CERTIFICATE

I do hereby certify that, under my personal supervision, this plat was prepared from an actual survey completed on the 23rd day of March, 2015, and is true and correct to the best of my knowledge.

(SEAL)



Nebraska Land Surveying, LLC

Jay D. Gormley, Manager
Nebraska Registered Land Surveyor No. 717

Survey Record Repository
RECEIVED

45
APR 22 2015

CUSTER
1218 - 245



- ⊕ = FOUND SECTION CORNER
- ⊙ = FOUND QUARTER SECTION CORNER
- = SET 5/8" x 24" REBAR W/ I.D. CAP
STAMPED "GORMLEY NEBR. LS 717"
- = FOUND CORNER MONUMENT AS INDICATED
- ⊠ = CALCULATED POINT
- P = PLATTED DISTANCE
- R = RECORD DISTANCE
- A = ACTUAL DISTANCE
- G.L.O. = GENERAL LAND OFFICE
- Ch = CHAIN MEASURE (1 Ch = 66')



PROJECTS\2015\2015-013 OPPORTUNITY LAND INVESTMENT

CITY OF BROKEN BOW, NEBRASKA

ORDINANCE NO. 1166

AN ORDINANCE OF THE CITY OF BROKEN BOW, NEBRASKA APPROVING THE PLAT OF PREMIER FIRST SUBDIVISION, INCORPORATING SAID SUBDIVISION INTO THE CITY, AUTHORIZING THE MAYOR TO SIGN ALL DOCUMENTS APPROVING THE SAME, PROVIDING FOR PUBLICATION AND EFFECTIVE DATE.

BE IT ORDAINED BY THE MAYOR AND THE CITY COUNCIL OF THE CITY OF BROKEN BOW, NEBRASKA:

Section 1. The owners of Premier First Subdivision have requested that the City approve said Subdivision and Plat.

Section 2. The Plat of Premier First Subdivision has been presented to the Planning Commission for consideration, and the Planning Commission has recommended approval of the same.

Section 3. The Plat of Premier First Subdivision, duly made out, acknowledged and certified, be and the same is approved and accepted and is ordered filed in the office of the Register of Deeds and Assessor.

Section 4. Further, the Mayor and Council find, pursuant to section 19-916 of the Nebraska Revised Statutes, that said Subdivision adjoins or is contiguous to the corporate limits, and with the approval of said Plat, said land described in said Plat shall be included within the corporate limits of Broken Bow and become a part of the City for all purposes whatsoever.

Section 5. The Mayor is authorized to sign any and all documents necessary to carry out the purposes of this Ordinance.

Section 6. This ordinance shall be in full force and take effect from and after its passage and approval as required by law and shall be published in pamphlet form.

Passed and approved this _____ day of _____, 2017.

Cecil Burt, Mayor

ATTEST:

Stephanie M. Wright, City Clerk

CITY OF BROKEN BOW, NEBRASKA

ORDINANCE NO. 1167

An ordinance to annex territory, including lands, lots, tracts, streets and highways within said description, as follows, to-wit:

Tract
see attached legal description.

WHEREAS, said land is urban or suburban in character and is contiguous and adjacent to the city limits of the City of Broken Bow, Nebraska; and

WHEREAS, said territory and the owners and inhabitants thereof will receive material benefits and advantages from the annexation of said territory to said City and justice and equity requires the annexation of said territory to said City; and

WHEREAS, the council members of the City of Broken Bow, Nebraska have voted upon the question of annexing said territory to said City and a majority of all the members of the City Council have voted for said annexation.

NOW, THEREFORE, BE IT ORDAINED BY THE MAYOR AND CITY COUNCIL OF THE CITY OF BROKEN BOW, NEBRASKA:

Section 1. That the territory described as follows, to-wit:

Tract
see attached legal description

be, and the same hereby is, annexed to the corporate limits of the City of Broken Bow, Nebraska, and the limits of said City shall be, and the same hereby are, extended to include with the boundaries and territory of said City said territory.

Section 2. That said territory and the inhabitants thereof shall hereafter enjoy the privileges and benefits of other persons and territory included within the City of Broken Bow, Nebraska, and said territory and inhabitants thereof shall hereafter be subject to the ordinances, rules, regulations,

taxes, and all other burdens of other persons and territory included within the City of Broken Bow, Nebraska; provided, that said territory shall not be taxed for any indebtedness of the City of Broken Bow, Nebraska existing prior to the date of this annexation.

Passed and approved this _____ day of _____, 2017.

Cecil Burt, Mayor

Attest:

Stephanie Wright, City Clerk

North of Highway

VOLUNTARY ANNEXATION PETITION:

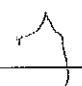
NAME OF APPLICANT: Opportunity Land Investments LLC
CUSTER COUNTY

Date of Application: _____

TO THE HONORABLE MAYOR AND MEMBERS OF THE CITY COUNCIL OF THE CITY OF
BROKEN BOW.

1. We the undersigned owners of real property respectfully request that the area described
be annexed to the City of Broken Bow.

2. Is this area contiguous or noncontiguous to the City of Broken Bow?
____ Contiguous ____ Noncontiguous

3. The boundaries of such territory are as follows:  SEE ATTACHED Legal
description _____

METES & BOUNDS LEGAL DESCRIPTION

That accurately corresponds with submitted mylar annexation plat

Name Address

Opportunity Land Investments Inc. Chin Meyer
Signature required

Print or type

Signature required

Print or type

VOLUNTARY ANNEXATION CHECKLIST

APPLICANT: _____

GENERAL DESCRIPTION: _____

____ Contiguous ____ Satellite

Does the property meet all statutory standards?

Y / N / NA

Will the property use both city water and sewer?

Y / N / NA

Has the Petitioner secured the support of the Board of Commissioners?

Y / N / NA

Has the Petitioner made arrangements for the costs of any utility extensions with the utilities department?

Y / N / NA

Is the property accessible directly from a major transportation route or existing city streets?

Y / N / NA

Is the property readily identifiable to emergency services (a factory, subdivision, a shopping center, etc.)?
Y / N / NA

Can the annexation area be served without creating unusual burdens on city services (heavy traffic, higher than typical solid waste, fire, police, street maintenance or utility costs)?
Y / N / NA

Is the use of the property consistent with the City's development plan and ordinances?
Y / N / NA

Has the property owner agreed to provide any easements, deeds, right-of-way, improvements, or other agreements required by City plans, policies or ordinances?
Y / N / NA

CITY ADMINISTRATOR'S RECOMMENDATION

_____ Annex effective _____
_____ Do not annex, but permit access to water and/or sewer.
_____ Do not annex and do not permit access to water and/or sewer.

ADDITIONAL EXPLANATION:

-

DATE: _____

Brent Clark
CITY ADMINISTRATOR

COUNCIL ACTION

_____ Annexed by Ordinance approved _____ effective _____
_____ Not annexed, but permitted access to water and/or sewer by resolution on _____
_____ Not annexed and denied access to water and/or sewer by resolution on _____

DATE CITY CLERK
pc: Department Heads

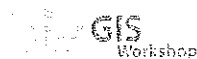
ORDINANCE ADOPTED AND APPROVED?

ORDINANCE FILED AT REGISTER OF DEEDS?

4/25/2017

Custer County Assessor

powered by:



Parcel Information	
Parcel ID	000506760
Links	
Map Number	2445-31-0-00000-000-0201
Cadastral #	
Current Owner	OPPORTUNITY LAND INVESTMENTS LLC
Mailing Address	720 PAWNEE LN, BROKEN BOW NE 68822-
Situs Address	
Tax District	98
Tax ID	
School District	BROKEN BOW SCHOOL 25
Neighborhood	1
Property Class	Agricultural
Lot Width x Depth	
Legal Description	SEC 31-17-20 LOT 2,SENW 56.64 ACRES BROKEN BOW TWP~
Comments	

Assessed Values				
<u>Year</u>	<u>Total</u>	<u>Land</u>	<u>Improvements</u>	<u>Outbuildings</u>
2016	\$118,377	\$118,377	\$0	\$0

2016 Tax Information	
Taxes	\$1,552.64
Tax Levy	1.401185

2016 Tax Levy	
<u>Description</u>	<u>Rate</u>
AG SOCIETY	0.004188
BBOW TWP 11 CEMETERY	0.012165
BROKEN BOW RURAL FIRE 1	0.012800
BROKEN BOW SCH 2012 BOND	0.049645
BROKEN BOW SCHOOL	0.999117
BROKEN BOW TOWNSHIP 11	0.025605
CUSTER COUNTY	0.176007
ESU #10	0.012743
LOWER LOUP NRD	0.031512
MID-PLAINS COLLEGE	0.077403

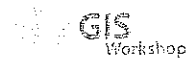
5 Year Sales History				
<u>Date</u>	<u>Book/Page</u>	<u># Parcels</u>	<u>Grantor</u>	<u>Price</u>
2013/02/15	13-1558	1	RUSSELL, ROGER E & JUDY M	\$226,560.00

Property Classification			
Status:	Unimproved	Location:	Rural
Property Class:	Agricultural	City Size:	2,501-5,000

4/25/2017

Custer County Assessor

powered by:



Zoning:	N/A	Lot Size:	40.01-160.00 ac.
----------------	-----	------------------	------------------

Historical Valuation Information

<u>Year</u>	<u>Billed Owner</u>	<u>Land</u>	<u>Impr</u>	<u>Outbldg</u>	<u>Total</u>	<u>Taxable</u>	<u>Taxes</u>
2016	OPPORTUNITY LAND INVESTMENTS LLC	\$118,377	\$0	\$0	\$118,377	\$118,377	\$1,552.64
2015	OPPORTUNITY LAND INVESTMENTS LLC	\$109,907	\$0	\$0	\$109,907	\$109,907	\$1,533.06
2014	OPPORTUNITY LAND INVESTMENTS LLC	\$87,389	\$0	\$0	\$87,389	\$87,389	\$1,273.48
2013	OPPORTUNITY LAND INVESTMENTS LLC	\$60,474	\$0	\$0	\$60,474	\$60,474	\$936.68
2012	RUSSELL, ROGER E & JUDY M	\$47,751	\$0	\$0	\$47,751	\$47,751	\$742.54

Farm Residence Datasheet

<u>Type</u>		<u>Heat Type</u>	
<u>Quality / Condition</u>		<u>Foundation</u>	
<u>Arch. Type</u>		<u>Slab Area</u>	
<u>Year Built</u>		<u>Crawl Area</u>	
<u>Actual Age</u>	N/A	<u>Basement Area</u>	sq. ft.
<u>Ext. Wall 1</u>		<u>Min Finish</u>	
<u>Ext. Wall 2</u>		<u>Rec Finish</u>	
<u>Base Area</u>		<u>Part Finish</u>	
<u>Total Area</u>		<u>Bedrooms</u>	
<u>Style 1</u>		<u>Bathrooms</u>	
<u>Style 2</u>		<u>Garage Type</u>	
<u>Roof Type</u>		<u>Garage Area</u>	

Agland Inventory

<u>Soil Symbol</u>	<u>Soil Name</u>	<u>Land Use</u>	<u>LVG Code</u>	<u>Spot LVG</u>	<u>Value/Acre</u>	<u>Acres</u>	<u>Total Value</u>
2596 HEC		DRY	2D		2,165	3.61	7,816
2597 HED		DRY	4D1		1,860	2.93	5,450
3710 CA		DRY	2D1		2,290	29.86	68,379
8816 CZB		DRY	1D		2,590	9.95	25,771
3710 CA		GRAS	2G1		1,215	9.88	12,004
8816 CZB		GRAS	1G		1,220	0.41	500
Totals						56.64	119,920

That part of the S1/2 NW1/4 of Section 31, T-7-N, R-20-W of the 6th P.M. Custer County, Nebraska, lying north and east of Highway 2 EXCEPT a tract in the northeast corner of the S1/2 NW1/4 described as being 40 rods by 20 rods.

Subject to:
Restrictions on Deed Book 183, Page 418 (Corrected by Deed Book 189, Page 986)

Appropriation of property to the use of the City of Broken Bow for the Mud Creek Flood Protection Project as shown in Report of Appraisers Book 174, Page 655

Restrictions shown on QCD from City of Broken Bow to State of Nebraska Book 183, Page 716

Rights of the public to that portion used as access to St. Joseph Catholic Cemetery

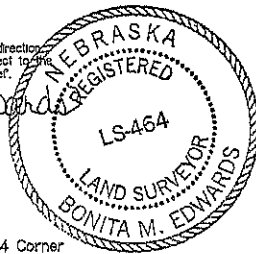
Found Alum. Cap
1 1/2" pipe 33.61' W
"x" hole in corner post 33.98' W
SW Corner ROW marker 82.25' E
33.5' west of center Hwy. 2

N 1/16 West Line
31-17-20

Approx. location of access
access - 40' wide - allowed
302.23' from east line as
measured along centerline

March 2013
file: 11572

A survey was made under my direction
as shown and is true and correct to the
best of my knowledge and belief.
Bonita M. Edwards LS-464
Registered Land Surveyor



Found Alum. Cap
1 1/2" pipe 33.61' W
"x" hole in corner post 33.98' W
SW Corner ROW marker 82.25' E
33.5' west of center Hwy. 2

N 89°49'53"W
1307.94'
1308.5' (R-BL-2005)

Found 1" pipe
tele. marker post 58.82' SE
3/4" rebar 62.01' S

W 1/16 South Line
31-17-20

8°24'28"
R: 1572.02'
Arc: 230.87'
Ch: 230.46'

N 89°52'18"W
1321.05'
1321' (R-BL-2005)

Found Alum. Cap
near corner ROW marker 71.52' NW
near corner ROW marker 74.82' NE

Center of Section
31-17-20

Edwards Land Surveying 210 West 5th Street PO Box 507 North Platte, NE 69103 308-532-1819

NOTES:

BFE lines shown are approximate only
Scaled from Dept. of Natural Resources
map dated June 20, 2002 to June 20, 2017
Datum = 1988

* Distance * plot missing one nail from
written notes & bounds description

See complete Legal Description
on Commitment Number: 105679

- Corner Found
- Corner Set
- 1/2" x 24" rebar & OPC
- R Record Distance
- 45' or M Measured Distance
- C Computed Distance
- ROW Marker

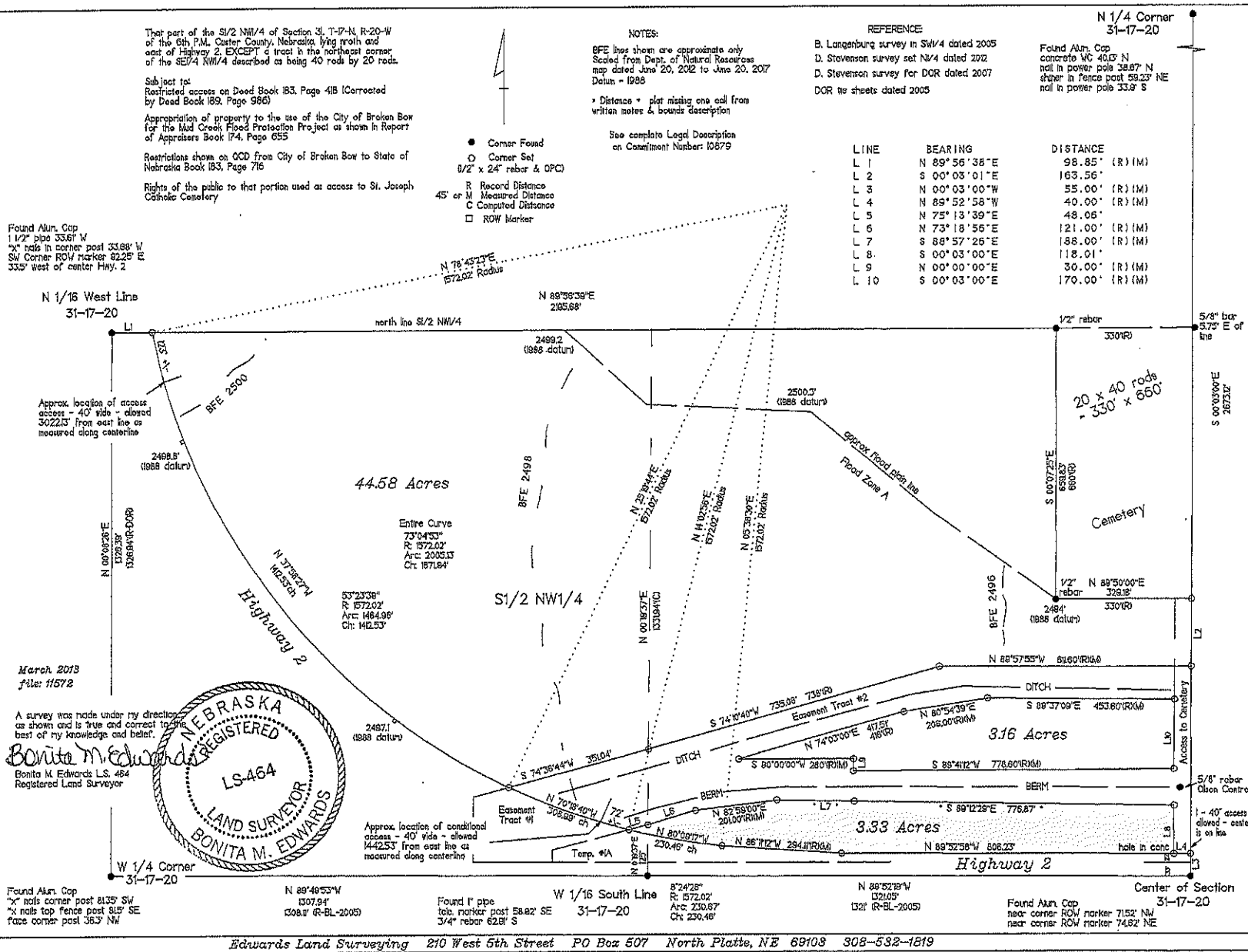
REFERENCE:

B. Langenburg survey in SW1/4 dated 2005
D. Stevenson survey set NW4 dated 2002
D. Stevenson survey for DOR dated 2007
DOR to sheets dated 2005

N 1/4 Corner
31-17-20

Found Alum. Cap
concrete MC 40.03' N
nail in power pole 38.87' N
shorter in fence post 59.23' NE
nail in power pole 33.9' S

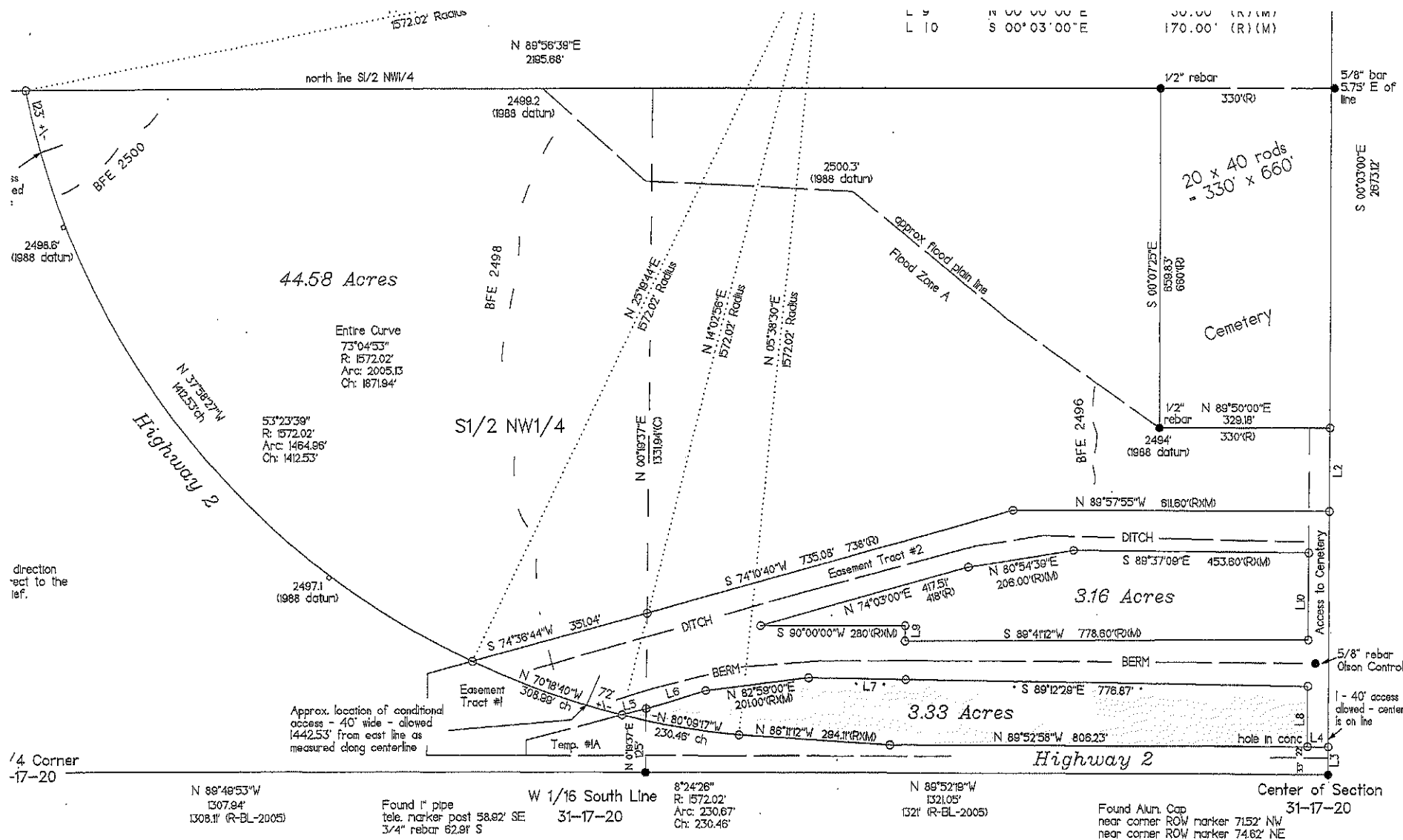
LINE	BEARING	DISTANCE
L 1	N 89°56'38"E	98.85' (R) (M)
L 2	S 00°03'01"E	163.56'
L 3	N 00°03'00"W	55.00' (R) (M)
L 4	N 89°52'58"W	40.00' (R) (M)
L 5	N 75°13'39"E	48.06'
L 6	N 73°18'56"E	121.00' (R) (M)
L 7	S 88°57'25"E	188.00' (R) (M)
L 8	S 00°03'00"E	118.01'
L 9	N 00°00'00"E	30.00' (R) (M)
L 10	S 00°03'00"E	170.00' (R) (M)



Survey Record Repository
RECEIVED
5⁰⁰
SEP 12 2013
Custer
1138-183 1/2

A tract of land in the South Half of the Northwest Quarter of Section 31, Township 17 North, Range 20 West of the 6th P.M., Custer County, Nebraska more particularly described as follows:

Referring to the Center of said Section 31; thence N 0°03'00" E on the east line of the Northwest Quarter of said Section 31, a distance of 55 feet to the northerly Highway 2 right-of-way; thence N 89°52'58" W on said right-of-way, a distance of 40 feet to the POINT OF BEGINNING; thence continuing N 89°52'58" W on said right-of-way, a distance of 806.23 feet; thence N 86°11'12" W on said right-of-way, a distance of 294.11 feet to the point of curvature of a non-tangent curve to the right, said curve having a radius of 1572.02 feet, a central angle of 8°24'26", and a chord of 230.46 feet bearing N 80°09'17" W; thence westerly on said curve and right-of-way an arc distance of 230.67 feet; thence N 75°13'39" E, a distance of 48.06 feet; thence N 73°18'56" E, a distance of 121.00 feet thence N 82°59'00" E, a distance of 201.00 feet; thence S 88°57'26" E, a distance of 188.00 feet; thence S 89°12'29" E, a distance of 776.87 feet; thence S 0°03'00" E, a distance of 118.01 feet to the POINT OF BEGINNING; said described tract containing 3.33 Acres, more or less.



Edwards Land Surveying 210 West 5th Street PO Box 507 North Platte, NE 69103 308-532-1819

1124-103 1/2

RESOLUTION 2017-39

**RESOLUTION AUTHORIZING PAYMENT #10 TO
JEO CONSULTING GROUP, INC.**

BE IT RESOLVED BY THE MAYOR AND COUNCIL OF THE CITY OF BROKEN BOW, NEBRASKA:

WHEREAS, JEO Consulting Group, Inc. has submitted Pay Request No. 10 for work performed for Construction Administration through June 2, 2017; and

WHEREAS, JEO Consulting Group, Inc. is entitled to a payment of \$9,332.00 for the Broken Bow Library Design Services/Building Renovation and Addition.

NOW, THEREFORE, BE IT RESOLVED, by the Mayor and City Council of Broken Bow, Nebraska: to authorize the City to sign all necessary documentation for payment and pay JEO Consulting Group, Inc. \$9,332.00.

PASSED AND APPROVED this 27th day of June, 2017.

Cecil Burt, Mayor

ATTEST:

Stephanie M. Wright, City Clerk

(S E A L)



ENGINEERING ■ ARCHITECTURE ■ SURVEYING ■ PLANNING

Invoice

June 9, 2017

Project No: R120249.02

Invoice No: 96309

Invoice Amount: 9,332.00

City of Broken Bow
PO Box 504
314 So. 10th Avenue
Broken Bow, NE 68822

Project Manager Marvin Larson

Project R120249.02 Broken Bow Library Design Services/ Building Renovation and Addition

Professional Services through June 2, 2017

	Contract Amount	Percent Complete	Billed-to-Date	Previous Billing	Current Billing
Lump Sum Phase(s)					
Design Development	\$31,500.00	100 %	\$31,500.00	\$31,500.00	0.00
Construction Documents	\$104,100.00	100 %	\$104,100.00	\$104,100.00	0.00
Bidding and Negotiation	\$9,000.00	100 %	\$9,000.00	\$9,000.00	0.00
Hourly Phase(s)					
Construction Administration			\$18,787.00	\$9,455.00	\$9,332.00
Reimbursable Expenses			\$330.00	\$330.00	0.00
Total	\$144,600.00		\$163,717.00	\$154,385.00	\$9,332.00
Total Amount Due Upon Receipt					\$9,332.00

JEO CONSULTING GROUP INC ■ JEO ARCHITECTURE INC

142 W. 11th Street | PO Box 207 | Wahoo, Nebraska 68066-0207 | p: 402.443.4661 | f: 402.443.3508

www.jeo.com

Return to Agenda

RESOLUTION 2017-40

**RESOLUTION AUTHORIZING PAYMENT #28 TO
JEO CONSULTING GROUP, INC.**

BE IT RESOLVED BY THE MAYOR AND COUNCIL OF THE CITY OF BROKEN BOW, NEBRASKA:

WHEREAS, JEO Consulting Group, Inc. has submitted Pay Request No. 28 for work performed for 97% completed work of Construction Services, 36% Amendment S “B” St Construction Services, 100% Amend Soil Conditions, 82% Additional Amend S “B” St Design, 78% Additional Amend S “B” St Construction, 17% Post Construction, Amend S “B” St RPR Services, and Additional Amend S.B “B” St RPR completed through June 9, 2017; and

WHEREAS, JEO Consulting Group, Inc. is entitled to a payment of \$15,694.75 for the Broken Bow 2015 Downtown Improvements.

NOW, THEREFORE, BE IT RESOLVED, by the Mayor and City Council of Broken Bow, Nebraska: to authorize the City to sign all necessary documentation for payment and pay JEO Consulting Group, Inc. \$15,694.75.

PASSED AND APPROVED this 27th day of June, 2017.

Cecil Burt, Mayor

ATTEST:

Stephanie M. Wright, City Clerk

(S E A L)



ENGINEERING ■ ARCHITECTURE ■ SURVEYING ■ PLANNING

Invoice

June 13, 2017

Project No: R141001.00

Invoice No: 96457

Invoice Amount: 15,694.75

City of Broken Bow
PO Box 504
314 So. 10th Avenue
Broken Bow, NE 68822

Project Manager Steven Parr

Project R141001.00 Broken Bow 2015 Downtown Improvements

Professional Services through June 9, 2017

	Contract Amount	Percent Complete	Billed-to-Date	Previous Billing	Current Billing
Lump Sum Phase(s)					
Design	\$173,705.00	100 %	\$173,705.00	\$173,705.00	0.00
Amendment No. 1 Design	\$28,095.00	100 %	\$28,095.00	\$28,095.00	0.00
Bidding and Negotiations	\$12,000.00	100 %	\$12,000.00	\$12,000.00	0.00
Construction Services	\$167,000.00	97 %	\$162,805.00	\$160,610.75	\$2,194.25
Add'l Lighting Design for 10th Avenue, D Street and Downtown Park	\$7,950.00	100 %	\$7,950.00	\$7,950.00	0.00
Add'l Lighting Design for 10th Avenue, C Street to BNSF	\$2,970.00	100 %	\$2,970.00	\$2,970.00	0.00
Amend-S. "B" St Design	\$32,000.00	100 %	\$32,000.00	\$32,000.00	0.00
Amend-S. "B" St Const Serv	\$8,490.00	36 %	\$3,069.50	\$2,869.50	\$200.00
Amend-S. "B" St Constr Serv	\$2,160.00	100 %	\$2,160.00	\$2,160.00	0.00
Amend-Soil Conditions	\$1,700.00	100 %	\$1,700.00	\$1,554.00	\$146.00
Add'l Amend-S. B St Design	\$9,950.00	82 %	\$8,205.50	\$5,546.25	\$2,659.25
Add'l Amend-S.B St Constr	\$4,250.00	78 %	\$3,336.00	0.00	\$3,336.00
Post Construction	\$10,000.00	17 %	\$1,695.50	0.00	\$1,695.50
Hourly to a Maximum Phase(s)					
Amend-S. "B" St RPR Serv	\$13,400.00		\$8,953.50	\$6,253.00	\$2,700.50
Hourly Phase(s)					
Add'l Amend-S.B St RPR			\$2,763.25	0.00	\$2,763.25
Add'l Services-USACOE Flood Control Permitting			\$10,502.00	\$10,502.00	0.00
RPR Services			\$99,754.50	\$99,754.50	0.00
Total	\$473,670.00		\$561,664.75	\$545,970.00	\$15,694.75

JEO CONSULTING GROUP INC ■ JEO ARCHITECTURE INC

142 W. 11th Street | PO Box 207 | Wahoo, Nebraska 68066-0207 | p: 402.443.4661 | f: 402.443.3508

www.jeo.com

Project	R141001.00	Broken Bow 2015 Downtown Improvements	Invoice	96457
Total Amount Due Upon Receipt			\$15,694.75	

cc-Ryan Kavan, JEO

RESOLUTION 2017-41

**RESOLUTION AUTHORIZING PAYMENT TO
MYERS CONSTRUCTION, INC.**

BE IT RESOLVED BY THE MAYOR AND COUNCIL OF THE CITY OF BROKEN BOW, NEBRASKA:

WHEREAS, Myers Construction, Inc. has submitted Application for Payment No. 14 for the 2014 Downtown Improvement Project in the amount of \$160,115.00 for materials and labor through June 17, 2017.

NOW, THEREFORE, BE IT RESOLVED, by the Mayor and City Council of Broken Bow, Nebraska: authorizing the City to sign all necessary documentation for payment and to pay Myers Construction, Inc. the amount of \$160,115.00 for Payment No. 14.

PASSED AND APPROVED this 27th day of June 2017.

Cecil Burt, Mayor

ATTEST:

Stephanie M. Wright, City Clerk

(S E A L)

APPLICATION FOR PAYMENT NO. FOURTEEN

To: City of Broken Bow, Nebraska
From: Myers Construction, Inc.
Contract For: 2014 Downtown Improvements
ENGINEER's Project No. 141001
For Work accomplished through the date of: 6/17/2017

1. Original Contract Price:	\$ 4,105,598.95
2. Net change by Change Orders and Written Amendments (+ or -): #1 thru' #8)	\$ 992,218.20
3. Current Contract Price (1 plus 2):	\$ 5,097,817.15
4. Total completed and stored to date:	\$ 5,201,687.00
5. Percent of Project Completed <u>102%</u>	
6. Retainage (per agreement):	
<u>10%</u> of completed Work and Stored Materials: <u>\$217,721.45</u>	
(10% of the first 50% of work completed & stored)	
Total Retainage:	\$ 217,721.45
7. Total completed and stored to date less retainage (4 minus 6):	\$ 4,983,965.55
8. Less previous Application for Payments:	\$ 4,823,850.55
9. DUE THIS APPLICATION (7 MINUS 8):	\$ 160,115.00

Accompanying Documentation:

CONTRACTOR'S Certification:

of Work done under the Contract referred to above have been applied on account to discharge CONTRACTOR's legitimate obligations incurred in connection with Work covered by prior Applications for Payment numbered 1 through ___ inclusive; (2) title of all Work, materials and equipment incorporated in said Work or otherwise listed in or covered by this Application for Payment will pass to OWNER at time of payment free and clear of all Liens, security interests and encumbrances (except such as are covered by a Bond acceptable to OWNER indemnifying OWNER against any such Lien, security interest or encumbrance); and (3) all Work covered by this Application for Payment is in accordance with the Contract Documents and not defective.

Dated: 6/21/2017 MYERS CONSTRUCTION, INC.
By: *Geny Myers*

Payment of the above AMOUNT DUE THIS APPLICATION is recommended.

Dated: 6/22/17 JEO CONSULTING GROUP, INC.
By: *James Bloom*

APPLICATION APPROVED BY:

By: _____
Title: _____ Date: _____

ATTEST:

By: _____ Title: _____

CONTRACTOR'S PROGRESS ESTIMATE

Owner: City of Broken Bow
PO Box 504
Broken Bow, NE 68822

Date:06/17/2017

Project: 2014 Downtown Improvements

Estimate No.: FOURTEEN

Contractor: Myers Construction, Inc.
79849 Hwy 2
Broken Bow, NE 68822

JEO Project No.: 141001

ITEM NO.	CONTRACT QTY	UNIT	DESCRIPTION	QTY TO DATE	UNIT PRICE	TOTAL
GROUP A - Square Improvements - Paving, Storm Sewer, Sanitary Sewer & Removals						
1	1	LS	Mobilization	1	\$6,000.00	\$6,000.00
2	1,232	SY	Remove Pavement	1232	\$7.00	\$8,624.00
3	6,800	SY	Remove Brick Pavers	6800	\$18.00	\$122,400.00
4	280	SY	Remove Sidewalk Brick Pavers	280	\$20.00	\$5,600.00
5	1,818	SY	Remove Walk	1818	\$6.50	\$11,817.00
6	11	EA	Remove Grate Inlet	11	\$430.00	\$4,730.00
7	3	EA	Remove Storm Sewer Manhole	3	\$700.00	\$2,100.00
8	1,105	LF	Remove Storm Sewer Pipe	1105	\$24.50	\$27,072.50
9	1,621	SY	Build 9" Concrete Pavement	2177	\$48.00	\$104,496.00
10	55	SY	Build 8" Concrete Pavement	55	\$46.00	\$2,530.00
11	2,940	SY	Build 7" Concrete Pavement	2940	\$45.00	\$132,300.00
12	3,028	SY	Build Brick Paving	2472	\$98.00	\$242,256.00
13	2,381	SY	Build 5" Concrete Sidewalk	2381	\$45.00	\$107,145.00
14	102	SY	Build 5" Doorway Concrete Sidewalk	102	\$80.00	\$8,160.00
15	7,650	SY	Subgrade Preparation	7650	\$3.15	\$24,097.50
16	1,455	CY	Embankment (Established Qty)	1455	\$14.00	\$20,370.00
17	6	EA	Build Structural Stoop	8	\$1,400.00	\$11,200.00
18	5	EA	Build Canopy Foundation	5	\$950.00	\$4,750.00
19	192	SF	Build Curb Ramp	192	\$80.00	\$15,360.00
20	20	SF	Window Well Blocking	64	\$40.00	\$2,560.00
21	437	LF	Build 36" RCP Storm Sewer	437	\$97.00	\$42,389.00

22	189	LF	Build 18" RCP Storm Sewer	224	\$63.00	\$14,112.00
23	341	LF	Build 15" RCP Storm Sewer	341	\$59.00	\$20,119.00
24	13	EA	Build Grate Inlet	13	\$5,500.00	\$71,500.00
25	5	EA	Build Storm Sewer Manhole	5	\$5,800.00	\$29,000.00
26	1	EA	Build Concrete Collar	1	\$1,500.00	\$1,500.00
27	1,150	LF	24" Preformed Pavement Marking Type 4, Painted		\$24.00	\$0.00
28	2,415	LF	4" Preformed Pavement Marking Type 4, Grooved		\$5.00	\$0.00
29	7	EA	Preformed Pavement Marking Type 4, Grooved		\$580.00	\$0.00
30	1	LS	Traffic Control	1	\$6,000.00	\$6,000.00
31	20	EA	Cores for Signs	20	\$134.00	\$2,680.00
32	324	LF	6" PVC Sanitary Sewer Pipe	324	\$38.00	\$12,312.00
33	13	VF	48" Sanitary Sewer Manhole	13	\$660.00	\$8,580.00
34	1	EA	6" PVC Plug	1	\$62.00	\$62.00
35	2	EA	6" Sanitary Sewer In-Line Cleanout	2	\$2,800.00	\$5,600.00
36	1	EA	Connect to Existing Sewer Main	1	\$800.00	\$800.00
37	17	EA	Remove Curb Stop	22	\$500.00	\$11,000.00
38	13	EA	Build Silt Check Inlet Sediment Filter	13	\$600.00	\$7,800.00
39	2	EA	Build Stabilized Construction Exit	2	\$3,200.00	\$6,400.00
40	100	LF	Build 4" Drain Tile and Weep Holes	100	50	\$5,000.00
TOTAL GROUP A						\$1,108,422.00
GROUP B - Square Improvements - Water						
1	1	LS	Mobilization	1	\$6,000.00	\$6,000.00
2	5	LF	6" DR18 PVC Water Main Pipe	81.5	\$36.00	\$2,934.00
3	848	LF	8" DR18 PVC Water Main Pipe	848	\$38.00	\$32,224.00
4	494	LF	10" DR18 PVC Water Main Pipe	504	\$48.00	\$24,192.00
5	1	EA	6" MJ Gate Valve & Box	9	\$1,240.00	\$11,160.00
6	9	EA	8" MJ Gate Valve & Box	11	\$1,563.00	\$17,193.00
7	4	EA	10" MJ Gate Valve & Box	6	\$3,100.00	\$18,600.00
8	3	EA	6" MJ Retainer Gland	4	\$90.00	\$360.00
8a	4	EA	6" MJ 45 Degree	7	\$303.00	\$2,121.00

8b	2	EA	6" MJ 90 Degree	3	\$320.00	\$960.00
8c	2	EA	6" x 2" Saddle	2	\$270.00	\$540.00
8d	1	EA	8" x 2" Saddle	1	\$285.00	\$285.00
9	1	EA	6" MJ Plug		\$75.00	\$0.00
10	1	EA	6" MJ Cap		\$120.00	\$0.00
11	2	EA	6" Foster Adapter	4	\$211.00	\$844.00
12	21	EA	8" MJ Retainer Gland	33	\$120.00	\$3,960.00
13	7	EA	8" MJ Plug	8	\$168.00	\$1,344.00
14	2	EA	8" MJ Cap	2	\$168.00	\$336.00
15	12	EA	8" Foster Adapter	19	\$288.00	\$5,472.00
16	9	EA	8" MJ Tee	9	\$576.00	\$5,184.00
17	3	EA	8" x 6" MJ Tee	8	\$500.00	\$4,000.00
18	1	EA	8" Cross		\$810.00	\$0.00
19	1	EA	8" x 6" MJ Reducer	5	\$380.00	\$1,900.00
20	2	EA	10" MJ Retainer Gland	6	\$225.00	\$1,350.00
21	3	EA	10" MJ Plug	2	\$360.00	\$720.00
22	6	EA	10" Foster Adapter	8	\$410.00	\$3,280.00
23	3	EA	10" x 8" MJ Tee	4	\$825.00	\$3,300.00
24	2	EA	10" Cross	2	\$1,120.00	\$2,240.00
25	1	EA	10" x 8" MJ Reducer	4	\$360.00	\$1,440.00
26	11	EA	8" x 1" Service Saddle	15	\$232.00	\$3,480.00
27	1	EA	8" x 1-1/2" Service Saddle	1	\$248.00	\$248.00
28	11	EA	10" x 1" Service Saddle	9	\$280.00	\$2,520.00
29	740	LF	1" PE Water Service	971	\$26.00	\$25,246.00
30	30	LF	1-1/2" Water Service	18	\$28.00	\$504.00
31	300	LF	1" PE Water Service, Bored	838	\$30.00	\$25,140.00
32	22	EA	1" Corporation Stop	24	\$244.00	\$5,856.00
33	1	EA	1-1/2" Corporation Stop	1	\$288.00	\$288.00
34	22	EA	1" Curb Stop & Box	24	\$564.00	\$13,536.00
35	5	EA	1" Cap	5	\$25.00	\$125.00
36	10	EA	1" Water Service Connection, Exterior	14	\$200.00	\$2,800.00
37	7	EA	1" Water Service Connection, Interior	10	\$540.00	\$5,400.00
38	1	EA	1-1/2" Water Service Connection, Exterior	1	\$410.00	\$410.00
39	1	EA	1" Meter Pit	3	\$1,908.00	\$5,724.00
40	3,790	LF	Double PE Tube Pipe Encasement	3790	\$6.80	\$25,772.00
41	8	EA	Connect to Existing Water Main	8	\$750.00	\$6,000.00
42	7	EA	Abandon Existing Water Main	7	\$1,800.00	\$12,600.00

43	6	EA	Remove Gate Valve Box	6	\$500.00	\$3,000.00
44	4	EA	Salvage Existing Gate Valve & Box			\$0.00
45	4	EA	Remove Fire Hydrant	4	\$500.00	\$2,000.00
SUBTOTAL GROUP B						\$292,588.00
Option 1 Contractors Only						\$0.00
Sales Tax for Materials & Equipment on Group B @ ____% (Option 1 Contractors Only)						\$0.00
Total Group B (Subtotal + Tax)						\$0.00
Option 2 & 3 Contractors Only						\$292,588.00
TOTAL GROUP B						\$292,588.00
GROUP C - Square Improvements - Lighting						
1	1	LS	Mobilization	1	\$6,000.00	\$6,000.00
2	24	EA	Lighting Unit	24	\$4,642.00	\$111,408.00
3	24	EA	Clamp-On Banner Arm	24	\$310.00	\$7,440.00
4	2	EA	Lighting Control Center	2	\$5,300.00	\$10,600.00
5	10	EA	Ground Level Pull Box	10	\$1,100.00	\$11,000.00
6	14	EA	Remove Existing Light Pole		\$450.00	\$0.00
7	1	LS	Remove Existing Overhead Lighting Circuit		\$2,000.00	\$0.00
8	3,870	LF	1-1/2" PVC Conduit	3870	\$2.71	\$10,487.70
9	280	LF	#1 THWN Copper	280	\$3.20	\$896.00
10	8,100	LF	#6 THWN Copper	8100	\$1.01	\$8,181.00
11	2,200	LF	#8 THWN Copper	2200	\$0.85	\$1,870.00
12	3,600	LF	Trench & Backfill	3600	\$1.50	\$5,400.00
13	270	LF	Bore Conduit	355	\$15.00	\$5,325.00
TOTAL GROUP C						\$178,607.70
GROUP D - 10th/D Street Improvements - Paving and Removals						
1	1	LS	Mobilization	1	\$6,000.00	\$6,000.00
2	5,677	SY	Remove Pavement	5677	\$7.00	\$39,739.00
3	5,714	SY	Remove Brick Pavers	5714	\$18.00	\$102,852.00
4	2,786	SY	Remove Walk	2786	\$6.50	\$18,109.00
5	17	EA	Remove Grate Inlet	17	\$430.00	\$7,310.00
6	3	EA	Remove Storm Sewer Manhole	3	\$700.00	\$2,100.00
7	1,497	LF	Remove Storm Sewer Pipe	1497	\$24.50	\$36,676.50
8			ITEM DELETED			\$0.00
9	2	EA	Remove Step Structure	2	\$600.00	\$1,200.00
10	1	EA	Remove Stairwell	1	\$3,500.00	\$3,500.00
11	1	EA	Remove and Abandon Stairwell	1	\$5,620.00	\$5,620.00
12	1	EA	Remove Tree	1	\$600.00	\$600.00

13	21	EA	Remove and Reset Existing Light Pole, Build Light Pole Base		\$1,050.00	\$0.00
14	7,956	SY	Build 9" Concrete Pavement	7956	\$48.00	\$381,888.00
15	1,045	SY	Build 8" Concrete Pavement	1695	\$46.00	\$77,970.00
16	2,416	SY	Build 7" Concrete Pavement	2416	\$45.00	\$108,720.00
17	2,932	SY	Build 5" Concrete Sidewalk	2932	\$45.00	\$131,940.00
18	21	SY	Build 5" Doorway Concrete Sidewalk	21	\$80.00	\$1,680.00
19	14,349	SY	Subgrade Preparation	14349	\$3.15	\$45,199.35
20	2,223	CY	Excavation and Embankment (Established Qty)	2223	\$14.00	\$31,122.00
21	152	SF	Build Curb Ramp	152	\$80.00	\$12,160.00
22	3	EA	Build Railroad Crossing Approach	3	\$6,800.00	\$20,400.00
23	1	LS	Build Stairwell	1	\$18,110.00	\$18,110.00
24	618	LF	Build 36" RCP Storm Sewer	618	\$97.00	\$59,946.00
25	122	LF	Build 30" RCP Storm Sewer	122	\$78.00	\$9,516.00
26	160	LF	Build 24" RCP Storm Sewer	160	\$70.00	\$11,200.00
27	90	LF	Build 18" RCP Storm Sewer	90	\$63.00	\$5,670.00
28	630	LF	Build 15" RCP Storm Sewer	630	\$59.00	\$37,170.00
29	191	LF	Build 12" PVC Storm Sewer	191	\$42.00	\$8,022.00
30	34	LF	Build 6" PVC Storm Sewer	34	\$34.00	\$1,156.00
31	25	EA	Build Grate Inlet	25	\$5,500.00	\$137,500.00
32	11	EA	Build Storm Sewer Manhole	11	\$5,800.00	\$63,800.00
33	2	EA	Build Storm Sewer Cleanout	3	\$3,400.00	\$10,200.00
34	2	EA	Build Concrete Collar	2	\$1,500.00	\$3,000.00
35	1	LS	Box Culvert Improvements - 10th Avenue	1	\$32,560.00	\$32,560.00
36	88.7	SY	Class I Repair		\$270.00	\$0.00
37	8.1	SY	Class II Repair		\$380.00	\$0.00
38	3	SY	Class III Repair	99.8	\$500.00	\$49,900.00
39	8	SF	Clean, Cover, and Seal for Deck Underside Repair		\$110.00	\$0.00
40	1	LS	Build Accessible Ramp	1	\$11,885.00	\$11,885.00

41	1,072	LF	24" Preformed Pavement Marking Type 4, Grooved		\$24.00	\$0.00
42	42	LF	16" Preformed Pavement Marking Type 4, Grooved		\$20.00	\$0.00
43	4,208	LF	4" Preformed Pavement Marking Type 4, Grooved		\$5.00	\$0.00
44	5	EA	Preformed Pavement Marking Type 4, Grooved		\$580.00	\$0.00
45	1	EA	RR' Preformed Pavement Marking Type 4, Grooved		\$875.00	\$0.00
46	1	LS	Traffic Control	1	\$6,000.00	\$6,000.00
47	20	EA	Cores for Signs	20	\$134.00	\$2,680.00
48	25	EA	Build Silt Check Inlet Sediment Filter	25	\$600.00	\$15,000.00
49	2	EA	Build Stabilized Construction Exit	2	\$3,200.00	\$6,400.00
50	20	LF	Build 4" Drain Tile and Weep Holes	20	\$30.00	\$600.00
TOTAL GROUP D						\$1,525,100.85
GROUP E - 10th/D Street Improvements - Water Improvements						
1	1	LS	Mobilization	1	\$6,000.00	\$6,000.00
2	71	LF	6" DR18 PVC Water Main Pipe	71	\$36.00	\$2,556.00
3	373	LF	8" DR18 PVC Water Main Pipe	373	\$38.00	\$14,174.00
4	103	LF	10" DR 18 PVC Water Main Pipe	103	\$48.00	\$4,944.00
5	1,016	LF	12" DR18 PVC Water Main Pipe	1016	\$56.00	\$56,896.00
6	382	LF	12" DR18 PVC Water Main Pipe, Inside of Casing	392	\$83.00	\$32,536.00
7	10	LF	16" Class 350 DI Water Main Pipe	10	\$136.00	\$1,360.00
8	235	LF	10" DR9 PE Water main Pipe, Bored in Place	235	\$130.00	\$30,550.00
9	500	LF	16" DR9 PE Water Main Pipe, Bored in Place	500	\$175.00	\$87,500.00
10	142	LF	24" Steel Casing (0.375" Thick), Trenched	157	\$210.00	\$32,970.00
11	241	LF	24" Steel Casing (0.375" Thick), Bored & Jacked	241	\$305.00	\$73,505.00
12	1	EA	6" MJ Gate Valve & Box	4	\$1,240.00	\$4,960.00
13	5	EA	8" MJ Gate Valve & Box	5	\$1,563.00	\$7,815.00
14	3	EA	10" MJ Gate Valve & Box	3	\$2,546.00	\$7,638.00
15	9	EA	12" MJ Gate Valve & Box	9	\$3,182.00	\$28,638.00
16	1	EA	12" Gate Valve & Manhole	1	\$6,840.00	\$6,840.00

17	1	EA	4" MJ Retainer Gland	4	\$72.00	\$288.00
18	5	EA	6" MJ Retainer Gland	16	\$90.00	\$1,440.00
19	2	EA	6" MJ Plug		\$75.00	\$0.00
20	3	EA	6" MJ Cap	2	\$120.00	\$240.00
21	1	EA	6" Foster Adapter	1	\$211.00	\$211.00
22	5	EA	8" MJ Retainer Gland	23	\$120.00	\$2,760.00
23	2	EA	8" MJ Plug		\$168.00	\$0.00
24	1	EA	8" MJ Cap	3	\$168.00	\$504.00
25	6	EA	8" Foster Adapter	1	\$288.00	\$288.00
26	1	EA	8" MJ 45 Degree Bend	13	\$336.00	\$4,368.00
27	3	EA	8" x 6" MJ Tee	2	\$500.00	\$1,000.00
28	10	EA	10" MJ Retainer Gland	10	\$225.00	\$2,250.00
29	4	EA	10" Foster Adapter	4	\$410.00	\$1,640.00
30	3	EA	10" MJ 45 Degree Bend	3	\$584.00	\$1,752.00
31	2	EA	10" x 6" MJ Tee	2	\$744.00	\$1,488.00
32	1	EA	10" x 8" MJ Tee	3	\$825.00	\$2,475.00
33	1	EA	10" x 8" MJ Reducer	1	\$360.00	\$360.00
34	11	EA	12" MJ Retainer Gland	23	\$240.00	\$5,520.00
35	3	EA	12" MJ Plug	3	\$360.00	\$1,080.00
36	16	EA	12" Foster Adapter	16	\$724.00	\$11,584.00
37	1	EA	12" x 6" MJ Reducer	4	\$400.00	\$1,600.00
38	2	EA	12" x 8" MJ Reducer	6	\$416.00	\$2,496.00
39	1	EA	12" x 10" MJ Reducer	1	\$472.00	\$472.00
40	1	EA	12" MJ 22.5 Degree Bend	1	\$688.00	\$688.00
41	2	EA	12" MJ 45 Degree Bend	7	\$752.00	\$5,264.00
42	3	EA	12" MJ Tee	3	\$1,164.00	\$3,492.00
43	1	EA	12" x 10" MJ Tee	1	\$1,164.00	\$1,164.00
44	4	EA	12" x 8" MJ Tee	4	\$956.00	\$3,824.00
45	3	EA	12" x 6" MJ Tee	3	\$868.00	\$2,604.00
46	1	EA	12" Cross	1	\$1,552.00	\$1,552.00
47	5	EA	16" MJ Retainer Gland	5	\$244.00	\$1,220.00
48	4	EA	16" MJ x FL Adapter	4	\$798.00	\$3,192.00
49	4	EA	16" x 12" MJ Reducer	4	\$639.00	\$2,556.00
50	2	EA	16" Foster Adapter	2	\$744.00	\$1,488.00
51	8	EA	8" x 1" Service Saddle	8	\$232.00	\$1,856.00
52	2	EA	10" x 1" Service Saddle	2	\$280.00	\$560.00
53	1	EA	10" x 2" Service Saddle	1	\$300.00	\$300.00
54	16	EA	12" x 1" Service Saddle	16	\$324.00	\$5,184.00
55	1	EA	12" x 1-1/2" Service Saddle	0	\$336.00	\$0.00
56	1	EA	12" x 2" Service Saddle	1	\$336.00	\$336.00
57	1,340	LF	1" PE Water Service	1340	\$26.00	\$34,840.00
58	26	EA	1" Corporation Stop	26	\$244.00	\$6,344.00
59	26	EA	1" Curb Stop & Box	26	\$564.00	\$14,664.00

60	22	EA	1" Water Service Connection, Exterior	22	\$200.00	\$4,400.00
61	4	EA	1" Water Service Connection, Interior	4	\$540.00	\$2,160.00
62	5	EA	1" Meter Pit	5	\$1,908.00	\$9,540.00
63	65	LF	1-1/2" PE Water Service		\$28.00	\$0.00
64	1	EA	1-1/2" Corporation Stop		\$288.00	\$0.00
65	1	EA	1-1/2" Curb Stop & Box	0	\$753.00	\$0.00
66	1	EA	1-1/2" Water Service Connection, Exterior		\$410.00	\$0.00
67	80	LF	2" PE Water Service	80	\$32.00	\$2,560.00
68	75	LF	2" PE Water Service Bored in Place	225	\$36.00	\$8,100.00
69	2	EA	2" Corporation Stop	5	\$416.00	\$2,080.00
70	2	EA	2" Curb Stop & Box	5	\$1,059.00	\$5,295.00
71	2	EA	2" Water Service Connection, Exterior	5	\$546.00	\$2,730.00
72	357	LF	Double PE Tube Pipe Encasement	357	\$6.80	\$2,427.60
73	4	EA	Connect to Existing Water Main	4	\$750.00	\$3,000.00
74	2	EA	Abandon Existing Water Main	3	\$1,800.00	\$5,400.00
75	1	EA	Salvage Existing Gate Valve & Box		\$500.00	\$0.00
76	4	EA	Remove Fire Hydrant	4	\$500.00	\$2,000.00
77	1	EA	6" MJ Tee	1	\$520.00	\$520.00
SUBTOTAL GROUP E						\$584,038.60
Only)						\$0.00
Total Group E (Subtotal + Tax)						\$0.00
Option 2 & 3 Contractors Only						\$584,038.60
Total Group E (Subtotal + Tax)						\$584,038.60
GROUP F - 9th Avenue Water Improvements						
1	1	LS	Mobilization	1	\$6,000.00	\$6,000.00
2	5	LF	4" DR18 PVC Water Main Pipe		\$34.00	\$0.00
3	545	LF	8" DR18 PVC Water Main Pipe	607	\$38.00	\$23,066.00
4	223	LF	10" DR18 PVC Water Main Pipe	216	\$48.00	\$10,368.00
5	282	LF	10" DR18 Water Main Pipe, Inside of Casing	325	\$75.00	\$24,375.00
6	10	LF	12" Class 350 DI Water Main Pipe	5	\$120.00	\$600.00

7	379	LF	12" DR9 PE Water Main Pipe, Bored in Place	379	\$148.00	\$56,092.00
8	92	LF	18" Steel Casing (0.312" Thick), Trenched	135	\$190.00	\$25,650.00
9	190	LF	18" Steel Casing (0.312" Thick), Bored & Jacked	190	\$288.00	\$54,720.00
10	1	EA	4" MJ Gate Valve & Box	1	\$924.00	\$924.00
11	5	EA	8" MJ Gate Valve & Box	3	\$1,563.00	\$4,689.00
12	1	EA	12" Gate Valve & Manhole	2	\$6,840.00	\$13,680.00
13	1	EA	4" MJ Retainer Gland	1	\$72.00	\$72.00
14	1	EA	4" MJ Plug	1	\$53.00	\$53.00
15	2	EA	4" Foster Adapter		\$168.00	\$0.00
16	1	EA	4" MJ 90 Degree Bend		\$288.00	\$0.00
17	1	EA	4" MJ Tee		\$360.00	\$0.00
18	24	EA	8" MJ Retainer Gland	24	\$120.00	\$2,880.00
19	4	EA	8" MJ Plug	4	\$168.00	\$672.00
20	2	EA	8" MJ Cap	1	\$168.00	\$168.00
21	8	EA	8" Foster Adapter	8	\$288.00	\$2,304.00
22	5	EA	8" MJ Tee	5	\$576.00	\$2,880.00
23	1	EA	8" x 4" MJ Tee		\$440.00	\$0.00
24	1	EA	8" x 6" MJ Tee	1	\$500.00	\$500.00
25	2	EA	8" MJ 22.5 Degree Bend		\$349.00	\$0.00
26	2	EA	8" MJ 45 Degree Bend	5	\$336.00	\$1,680.00
27	1	EA	10" MJ Retainer Gland	7	\$225.00	\$1,575.00
28	1	EA	10" x 8" MJ Reducer	1	\$360.00	\$360.00
29	1	EA	10" x 6" MJ Tee	1	\$744.00	\$744.00
30	7	EA	12" MJ Retainer Gland	7	\$240.00	\$1,680.00
31	1	EA	12" MJ Plug	1	\$360.00	\$360.00
32	1	EA	12" Foster Adapter	3	\$724.00	\$2,172.00
33	12	EA	12" x 10" MJ Reducer	12	\$472.00	\$5,664.00
34	2	EA	12" x 8" MJ Tee	1	\$956.00	\$956.00
35	1	EA	12" 6" MJ Tee	1	\$868.00	\$868.00
36	1	EA	12" MJ x FL Adapter	4	\$444.00	\$1,776.00
37	4	EA	Connect to Existing Water Main	4	\$750.00	\$3,000.00
38	4	EA	8" x 1" Service Saddle	4	\$232.00	\$928.00
39	4	EA	10" x 1" Service Saddle	5	\$280.00	\$1,400.00
40	1	EA	10" x 2" Service Saddle	1	\$300.00	\$300.00
41	1	EA	12" x 1" Service Saddle	1	\$324.00	\$324.00
42	390	LF	1" PE Water Service	390	\$26.00	\$10,140.00
43	9	EA	1" Corporation Stop	9	\$244.00	\$2,196.00
44	9	EA	1" Curb Stop & Box	9	\$564.00	\$5,076.00
45	8	EA	1" Water Service Connection, Exterior	8	\$200.00	\$1,600.00

46	1	EA	1" Meter Pit	1	\$1,908.00	\$1,908.00
47	65	LF	2" PE Water Service	54	\$32.00	\$1,728.00
48	1	EA	2" Corporation Stop	1	\$416.00	\$416.00
49	1	EA	1" Curb Stop & Box	1	\$1,059.00	\$1,059.00
50	1	EA	2" Water Service Connection, Exterior	1	\$546.00	\$546.00
51	214	LF	Double PE Tube Pipe Encasement	214	\$6.80	\$1,455.20
52	3	EA	Abandon Existing Water Main	3	\$1,800.00	\$5,400.00
53	1	EA	Remove Fire Hydrant	1	\$500.00	\$500.00
SUBTOTAL GROUP F						\$285,504.20
Only)						\$0.00
Total Group F (Subtotal + Tax)						\$0.00
Option 2 & 3 Contractors Only						\$285,504.20
Total Group F (Subtotal + Tax)						\$285,504.20
GROUP G - 9th Avenue Paving Improvements						
1	1	LS	Mobilization	1	\$6,000.00	\$6,000.00
2	1	LS	Traffic Control	1	\$6,000.00	\$6,000.00
3	1,902	SY	Remove Pavement	1958	\$7.00	\$13,706.00
4	468	SY	Remove Brick Pavers	903	\$18.00	\$16,254.00
5	688	SY	Remove Walk	842	\$6.50	\$5,473.00
6			ITEM REMOVED			\$0.00
7	5	EA	Remove and Reset Existing Light Pole, Build Light Pole Base		\$1,050.00	\$0.00
8	2,154	SY	Build 9" Concrete Pavement	3231	\$48.00	\$155,088.00
9	494	SY	Build 8" Concrete Pavement	572	\$46.00	\$26,312.00
10	138	SY	Build Brick Paving		\$98.00	\$0.00
11	236	SY	Build 5" Concrete Sidewalk	275	\$45.00	\$12,375.00
12	2,884	SY	Subgrade Preparation	4078	\$3.15	\$12,845.70
13	275	CY	Excavation and Embankment (Established Qty)	883	\$14.00	\$12,362.00
14	16	SF	Build Curb Ramp	16	\$50.00	\$800.00
15	4	EA	Build Railroad Crossing Approach	4	\$6,800.00	\$27,200.00
16	1	LS	Box Culvert Improvements - 9th Avenue	1	\$29,870.00	\$29,870.00
17	92.2	SY	Class I Repair	32	\$270.00	\$8,640.00
18	8.4	SY	Class II Repair		\$380.00	\$0.00
19	3.6	SY	Class III Repair	76	\$500.00	\$38,000.00

20	24	SF	Clean and Seal for Deck Underside Repair		\$110.00	\$0.00
21	8	SF	Clean, Cover and Seal for Deck Underside Repair		\$200.00	\$0.00
22	112	LF	24" Preformed Pavement Marking Type 4, Grooved		\$24.00	\$0.00
23	84	LF	16" Preformed Pavement Marking Type 4, Grooved		\$20.00	\$0.00
24	2	EA	RR' Preformed Pavement Marking Type 4, Grooved		\$875.00	\$0.00
TOTAL GROUP G						\$370,925.70

BID ALTERNATE - LIGHTING IMPROVEMENTS						
South D Street - 10th Avenue to 9th Avenue & 10th Avenue - South E St to South C St						
1	23	EA	Lighting Unit	23	\$4,642.00	\$106,766.00
2	24	EA	Clamp-On Banner Arm	24	\$310.00	\$7,440.00
3	6	EA	Delete Ground Level Pull Box	6	\$1,100.00	\$6,600.00
4	14	EA	Remove Existing Light Pole	14	\$450.00	\$6,300.00
5	1	LS	Remove Existing Overhead Lighting Circuit	1	\$2,000.00	\$2,000.00
6	6,820	LF	#6 THWN Copper	6820	\$1.01	\$6,888.20
7	1,705	LF	#8 THWN Copper	1705	\$0.85	\$1,449.25
TOTAL BID ALTERNATE						\$137,443.45
TOTAL GROUPS A THRU G & BID ALTERNATE						\$4,482,630.50

ITEM NO.	QTY	UNIT	DESCRIPTION	UNIT PRICE	ADD	DEDUCT
PAVING IMPROVEMENTS 9TH AVENUE FROM STA. 317+31 TO NORTH 'B' STREET SOUTH RETURN						
2	46	SY	Remove Pavement	\$7.00	\$322.00	
3	435	SY	Remove Brick Pavers	\$18.00	\$7,830.00	
4	115	SY	Remove Walk	\$6.50	\$747.50	
8	138	SY	Build Brick Pavers	\$98.00		\$13,524.00
9	734	SY	Build 9" Concrete Pavement	\$48.00	\$35,232.00	
15	734	SY	Subgrade Preparation	\$3.15	\$2,312.10	
TOTAL 9TH AVE PAVING					\$32,919.60	
WATER MAIN IMPROVEMENTS 9TH AVENUE						
5	43	LF	10" DR18 Water Main Pipe, Inside of Casing	\$75.00	\$3,225.00	
7	-43	LF	12" DR9 PE Water Main Pipe, Bored in Place	\$148.00	-\$6,364.00	
8	43	LF	18" Steel Casing (0.312" Thick), Trenched	\$190.00	\$8,170.00	
30	-2	EA	12" MJ Retainer Gland	\$240.00	-\$480.00	

32	1	EA	12" Foster Adapter	\$724.00	\$724.00	
42	50	LF	1" PE Water Service	\$26.00	\$1,300.00	
TOTAL ADD 9TH AVE					\$6,575.00	
WATER MAIN IMPROVEMENTS 10TH AVENUE						
5	-10	LF	12" DR18 PVC Water Main Pipe	\$56.00	-\$560.00	
6	10	LF	12" DR18 PVC Water Main Pipe, Inside of Casing	\$83.00	\$830.00	
10	10	LS	24" Steel Casing (0.375" Thick), Trenched	\$210.00	\$2,100.00	
TOTAL ADD 10TH AVE					\$2,370.00	
TOTAL ADD CHANGE ORDER #2					\$41,864.60	

ITEM NO.	QTY	UNIT	DESCRIPTION	UNIT PRICE	ADD	DEDUCT
PAVING IMPROVEMENTS 9TH AVENUE						
1	1	LS	Box Culvert Improvements	\$18,368.00	\$18,368.00	
TOTAL 9TH AVE PAVING						\$18,368.00
TOTAL ADD CHANGE ORDER #3						\$18,368.00

ITEM NO.	QTY	UNIT	DESCRIPTION	UNIT PRICE		TOTAL
CHANGE ORDER #4 - ADD PARK LIGHTING						
1	1800	LF	#10 THWN-2 to Light Poles	\$0.69	1800	\$1,242.00
2	1	LS	Misc Wiring & Conduit at Bandstand	\$2,610.00	1	\$2,610.00
3	8	EA	Concrete Pole Foundations for 12' Poles	\$1,206.00	8	\$9,648.00
4	8	EA	12' Light Poles & Fixtures	\$3,386.00	8	\$27,088.00
5	6	EA	Light Fixtures on Wall Brackets	\$1,761.00	6	\$10,566.00
TOTAL ADD CHANGE ORDER COST						\$51,154.00

ITEM NO.	QTY	UNIT	DESCRIPTION	UNIT PRICE	ADD	DEDUCT
SQUARE LIGHTING IMPROVEMENTS						
1	2	EA	Lighting Unit	\$4,642.00	\$9,284.00	
2	2	EA	Clamp-On Banner Arm	\$310.00	\$620.00	
3	90	LF	1-1/2" PVC Conduit	\$2.71	\$243.90	
5	270	LF	#6 THWN Copper	\$1.01	\$272.70	
6	90	LF	#8 THWN Copper	\$0.85	\$76.50	
7	90	LF	Trench & Backfill	\$1.50	\$135.00	
TOTAL ADD					\$10,632.10	

10TH AVENUE LIGHTING IMPROVEMENTS						
1	12	EA	Lighting Unit	\$4,642.00	\$55,704.00	
2	12	EA	Clamp-On Banner Arm	\$310.00	\$3,720.00	
3	760	LF	1-1/2" PVC Conduit	\$2.71	\$2,059.80	
4	3580	LF	#6 THWN Copper	\$1.01	\$3,615.80	
5	920	LF	#8 THWN Copper	\$0.85	\$782.00	
6	760	LF	Trench & Backfill	\$1.50	\$1,140.00	
7	160	LF	Trench & Backfill	\$22.00	\$3,520.00	
TOTAL ADD					\$70,541.40	
PARK SQUARE LIGHTING IMPROVEMENTS						
1	1	LS	Conduit, Boring, and additional water line to Light Poles	\$13,750.00	\$13,750.00	
TOTAL ADD					\$13,750.00	
TOTAL ADD CHANGE ORDER #5					\$94,923.50	

ITEM NO.	QTY	UNIT	DESCRIPTION	UNIT PRICE	ADD	DEDUCT
10th Avenue Bridge Repairs						
1	1	LS	Bridge Railing Repairs	\$13,000.00	\$13,000.00	
TOTAL ADD					\$13,000.00	
TOTAL ADD CHANGE ORDER #6						\$13,000.00

ITEM NO.	QTY	UNIT	DESCRIPTION	UNIT PRICE	ADD	DEDUCT
South B Street 10th Avenue West						
1	3341	SY	Remove Pavement	\$7.00	\$23,387.00	
2	2200	SY	Remove Brick Pavers	\$18.00	\$39,600.00	
3	443	SY	Remove Walk	\$6.50	\$2,879.50	
4	2	EA	Remove Grate Inlet	\$430.00	\$860.00	
5	96	LF	Remove Retaining Wall	\$2.00	\$192.00	
6	1	EA	Remove Storm Sewer Manhole	\$700.00	\$700.00	
7	357	LF	Remove Storm Sewer Pipe	\$24.50	\$8,746.50	
8	3205.5	SY	Build 9" Concrete Pavement	\$48.00	\$153,864.00	
9	328	SY	Build 7" Concrete Pavement	\$45.00	\$14,760.00	
10	724	SY	Build 5" Concrete Sidewalk	\$45.00	\$32,580.00	
11	5456	SY	Subgrade Preparation	\$3.15	\$17,186.40	
12	10	EA	Build Curb Ramp	\$80.00	\$800.00	
13	334	LF	Build 18" RCP Storm Sewer	\$59.00	\$19,706.00	
14	33	LF	Build 4" PVC Storm Sewer	\$34.00	\$1,122.00	
15	2	EA	Build Grate Inlet	\$5,500.00	\$11,000.00	
16		SF	Seeding	\$0.13	\$0.00	

17	482	CY	Embankment(Established Quantity)	\$14.00	\$6,748.00	
18	2	EA	Adjust Water Valve Box to Grade	\$280.00	\$560.00	
19	1	EA	Adjust Water Meter Pit to Grade	\$300.00	\$300.00	
20	5	EA	Adjust Curb Stop to Grade	\$240.00	\$1,200.00	
21	2	EA	Adjust Storm Sewer Manhole to Grade	\$300.00	\$600.00	
22	3	EA	Adjust Sanitary Manhole to Grade	\$300.00	\$900.00	
23	2	EA	Adjust Curb Inlet to Grade	\$500.00	\$1,000.00	
24	90	CY	Crushed Concrete	\$48.00	\$4,320.00	
TOTAL ADD					\$343,011.40	
TOTAL ADD CHANGE ORDER #7						\$343,011.40

ITEM NO.	QTY	UNIT	DESCRIPTION	UNIT PRICE	ADD	DEDUCT
South B Street 10th Avenue West						
1	680	SY	Remove Pavement	\$7.00	\$4,760.00	
2	2300	CY	Remove and dispose of unsuitable material	\$8.00	\$18,400.00	
3	20	SY	Remove Walk	\$6.50	\$130.00	
4	4	EA	Remove Grate Inlet	\$430.00	\$1,720.00	
5	1	LS	Remove Steps & Railing	\$600.00	\$600.00	
6	1	EA	Remove Storm Sewer Manhole	\$700.00	\$700.00	
7	170	LF	Remove Storm Sewer Pipe	\$24.50	\$4,165.00	
8	1	EA	Remove Sanitary Sewer Manhole	\$850.00	\$850.00	
9	150	SY	Build 9" Concrete Pavement	\$48.00	\$7,200.00	
10		SY	Build 5" Concrete Sidewalk	\$45.00	\$0.00	
11		LS	Build Concrete Steps and Metal Railing	\$5,000.00	\$0.00	
12	200	SY	Subgrade Preparation	\$3.15	\$630.00	
13		EA	Build Curb Ramp	\$80.00	\$0.00	
14	13	LF	Build 15" PVC Storm Sewer	\$59.00	\$767.00	
15	193	LF	Build 18" RCP Storm Sewer	\$63.00	\$12,159.00	
16	1	EA	Build Storm Manhole	\$5,800.00	\$5,800.00	
17	6	DAY	Temporary Sanitary Sewer Bypass Pumping	\$1,100.00	\$6,600.00	
18	1	LS	Remove Sanitary Sewer Main	\$2,500.00	\$2,500.00	
19	8	VF	48" Sanitary Sewer Manhole	\$660.00	\$5,280.00	

20		LF	8" PVC Sanitary Sewer Pipe	\$42.00	\$0.00	
21	140	LF	Build 4" PVC Sanitary Sewer Service	\$30.00	\$4,200.00	
22	2	EA	Connect to Existing Sewer Main	\$800.00	\$1,600.00	
23	3	EA	Build Grate Inlet	\$5,500.00	\$16,500.00	
24		SF	Seeding	\$0.13	\$0.00	
25	800	SY	Geotextile	\$5.73	\$4,584.00	
26	2500	CY	Embankment(Quantity to be field verified)	\$14.00	\$35,000.00	
27		EA	Adjust Water Valve Box to Grade	\$280.00	\$0.00	
28		EA	Adjust Storm Sewer Manhole to Grade	\$300.00	\$0.00	
29		EA	Adjust Curb Inlet to Grade	\$500.00	\$0.00	
TOTAL ADD					\$134,145.00	
TOTAL ADD CHANGE ORDER #8						\$134,145.00

Return to Agenda

Issuance 2/12/08

Expense report

PURPOSE: Travel/Relocation Expense Reimbursement

STATEMENT NUMBER: 1

PAY PERIOD: From _____
To _____

EMPLOYEE INFORMATION:

Name Hannah E. Hundley

Position Events Director

SSN [REDACTED]

Department	Chamber
------------	---------

Manager Donnis Hueftle-Bullock

Employee ID N/A

[illegible]